



PARTS LIST

CHAIN SAW

G3802
G3802EZ

NOTE :

1. Use HUSQVARNA ZENOAH genuine parts as specified in the parts list for repair and/or replacement.
2. HUSQVARNA ZENOAH does not warrant the machines, which have been damaged by the use of any parts other than those specified by the company.
3. When placing parts orders for repair and/or replacement, check if the model name and the serial number are applicable to those specified in the parts list, then use parts number described in the parts list.
4. The contents described in the parts list are accurate as of the date and may change due to improvement.
5. The parts for the machine shall be supplied ten (10) years after the machine is discontinued. [It is possible that some specific parts may be subject to change of their delivery term and list price within the limit of ten (10) years after the machine is discontinued. It is also possible that some parts may be available even after the limit of ten (10) years.]

APPLICABLE SERIAL NUMBERS:

G3802 : 2015 4609677 and up
G3802EZ : 2015 4605164 and up

January 2016

Fig.1 POWER UNIT 01

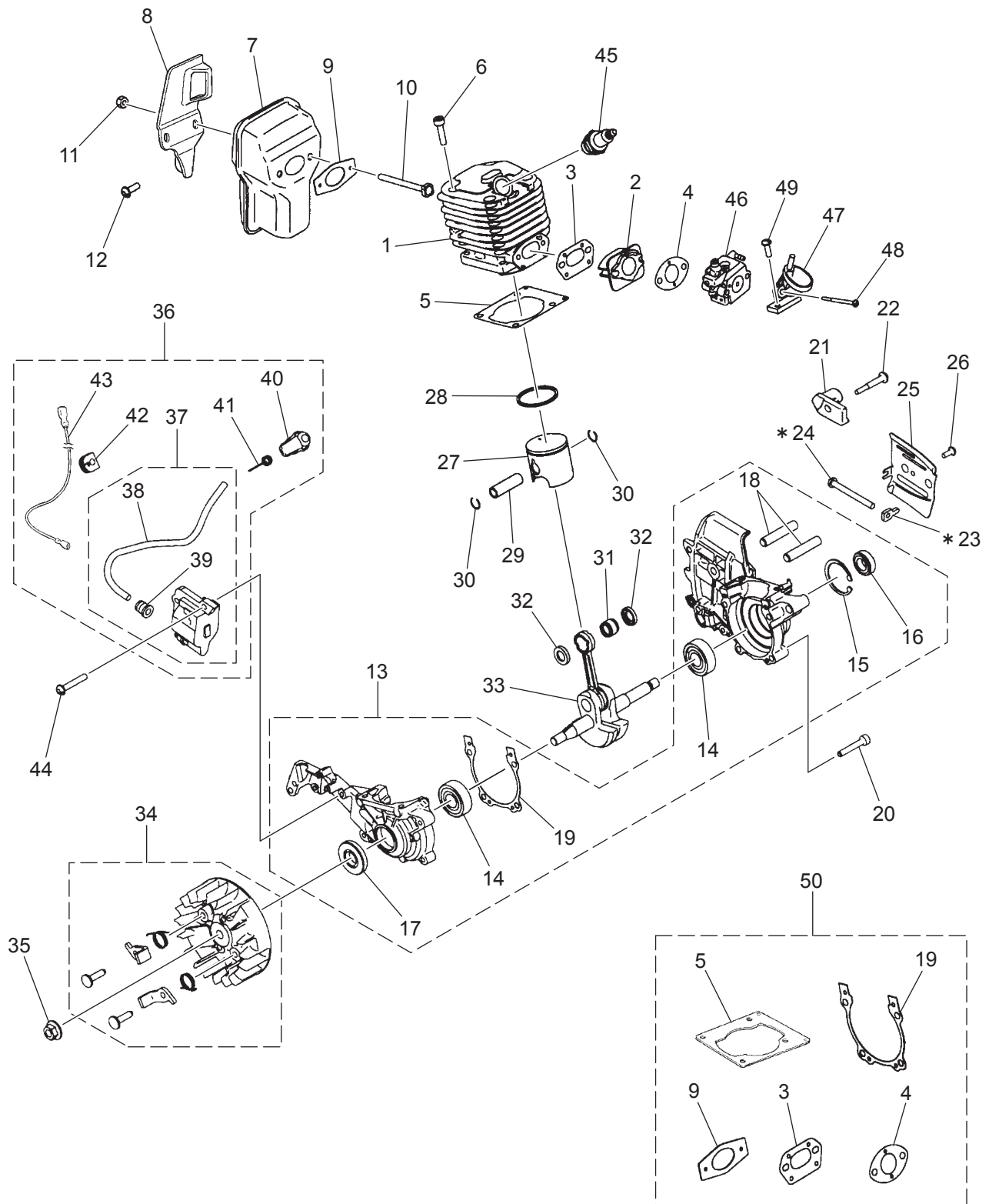


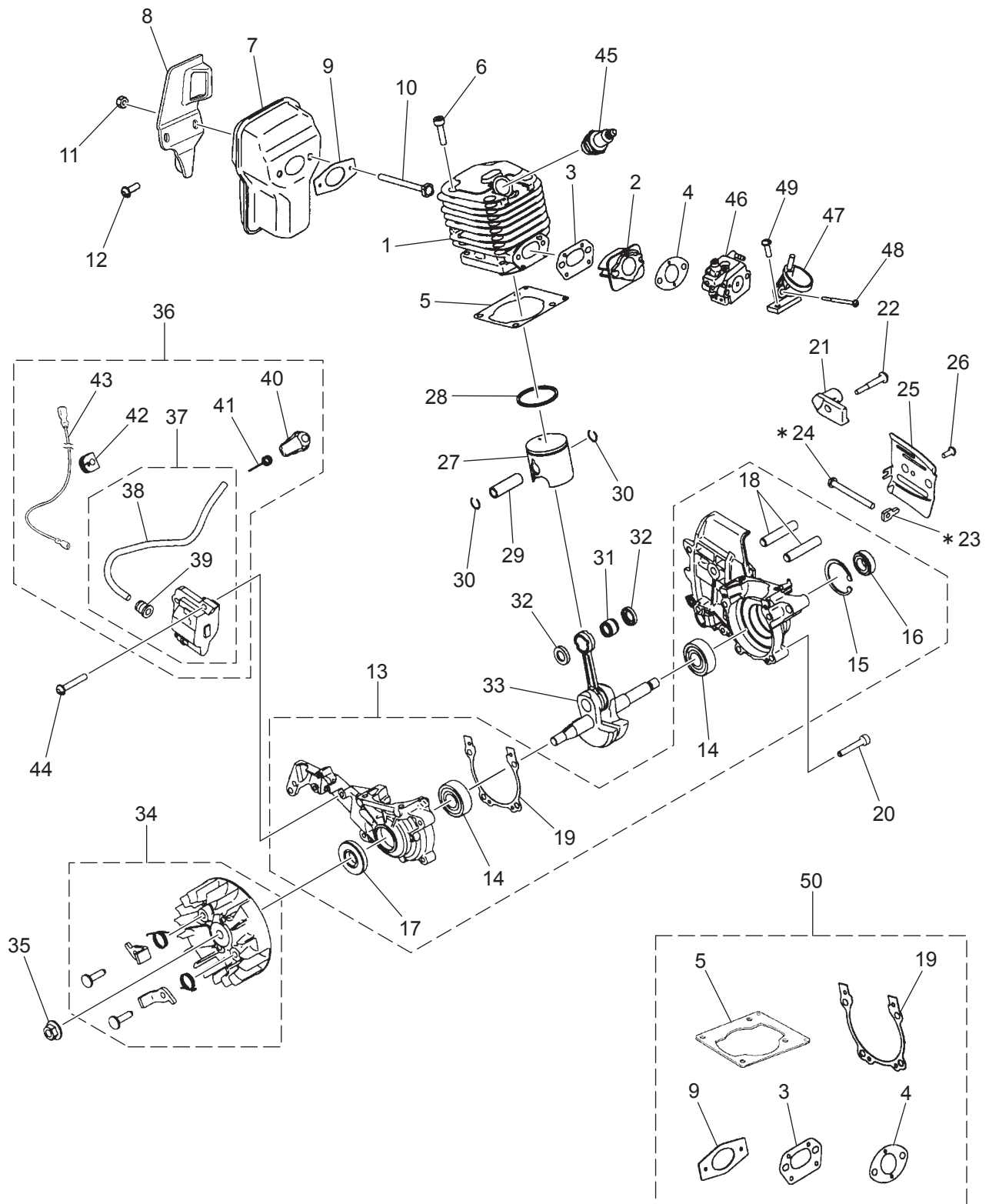
Fig. 1 G3802 / G3802EZ

POWER UNIT 01

Key#	PART NUMBER	DESCRIPTION	Q'TY	REMARKS
1	2898-12111	CYLINDER	1	
2	2867-14110	INSULATOR	1	
3	2850-14123	GASKET, INLET	1	
4	3330-14121	GASKET, CARB	1	
5	2850-14212	GASKET, CYLINDER	1	
6	4820-13180	BOLT	4	
7	T2100-15112	MUFFLER	1	
8	T2100-15311	STAY	1	
9	T2100-15210	GASKET, MUFFLER	1	
10	T2100-15220	BOLT, MUFFLER	2	
11	2850-15230	NUT, MUFFLER	2	M5
12	578 46 83-01	SCREW	1	M5xL14
13	848C402102	CRANKCASE ASSY	1	
14	84889C3200	• BEARING	2	
15	04065-03212	• SNAP RING	1	
16	2169-21210	• SEAL	1	
17	8488AC3210	• OIL SEAL	1	
18	2616-21230	• STUD	2	
19	T2100-21310	• GASKET, CASE	1	
20	4820-21310	BOLT	4	
21	848C3066F2	CHAIN CATCHER	1	
22	577 82 37-01	SCREW	1	
23	T2100-53220	NUT TENSIONER	1	* SN~2015 4209676 (G3802)
24	T2100-53210	SCREW	1	* SN~2015 3905163 (G3802EZ)
25	2850-25411	PLATE, A	1	
26	2670-25430	SCREW	1	
27	T2100-41110	PISTON	1	
28	T2100-41210	RING	1	
29	2850-41310	PIN	1	
30	1300-41320	SNAP RING	2	
31	T2100-41410	BEARING	1	
32	2850-41510	WASHER	2	
33	T2100-42000	SHAFT COMP.	1	
34	T2100-71100	ROTOR COMP.	1	
35	1650-43230	NUT	1	
36	T2100-71300	COIL ASSY	1	
37	T2100-71200	• COIL COMP.	1	
38	T2100-71220	• • CORD	1	
39	2616-71320	• • CAP	1	
40	2850-72110	• CAP	1	
41	1400-72121	• SPRING	1	
42	5500-72130	• GROMMET	1	
43	T2100-71510	• CORD, SWITCH	1	

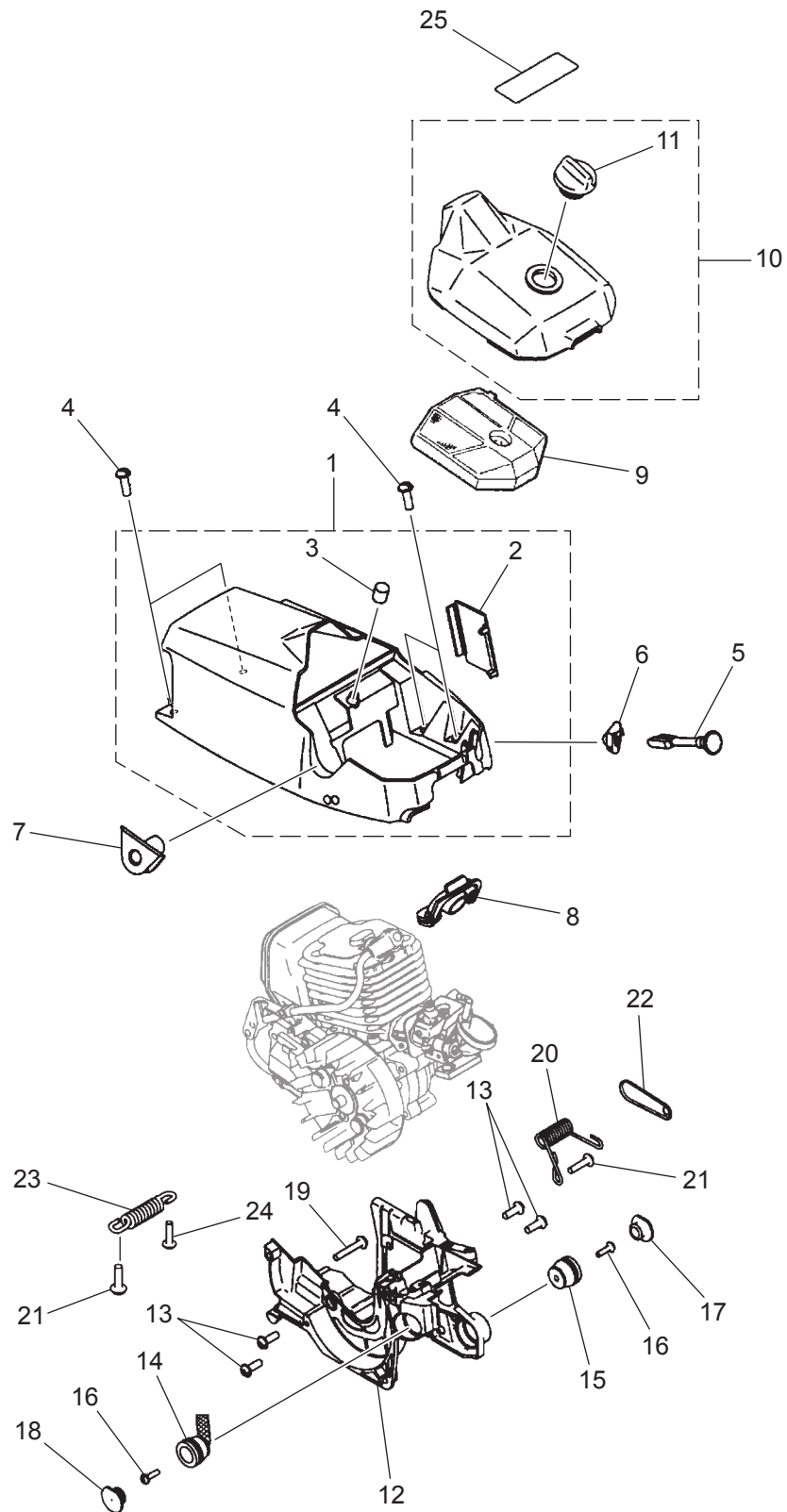
* After this serial number,
these two parts became discontinued.

Fig.1 POWER UNIT 01



POWER UNIT 01

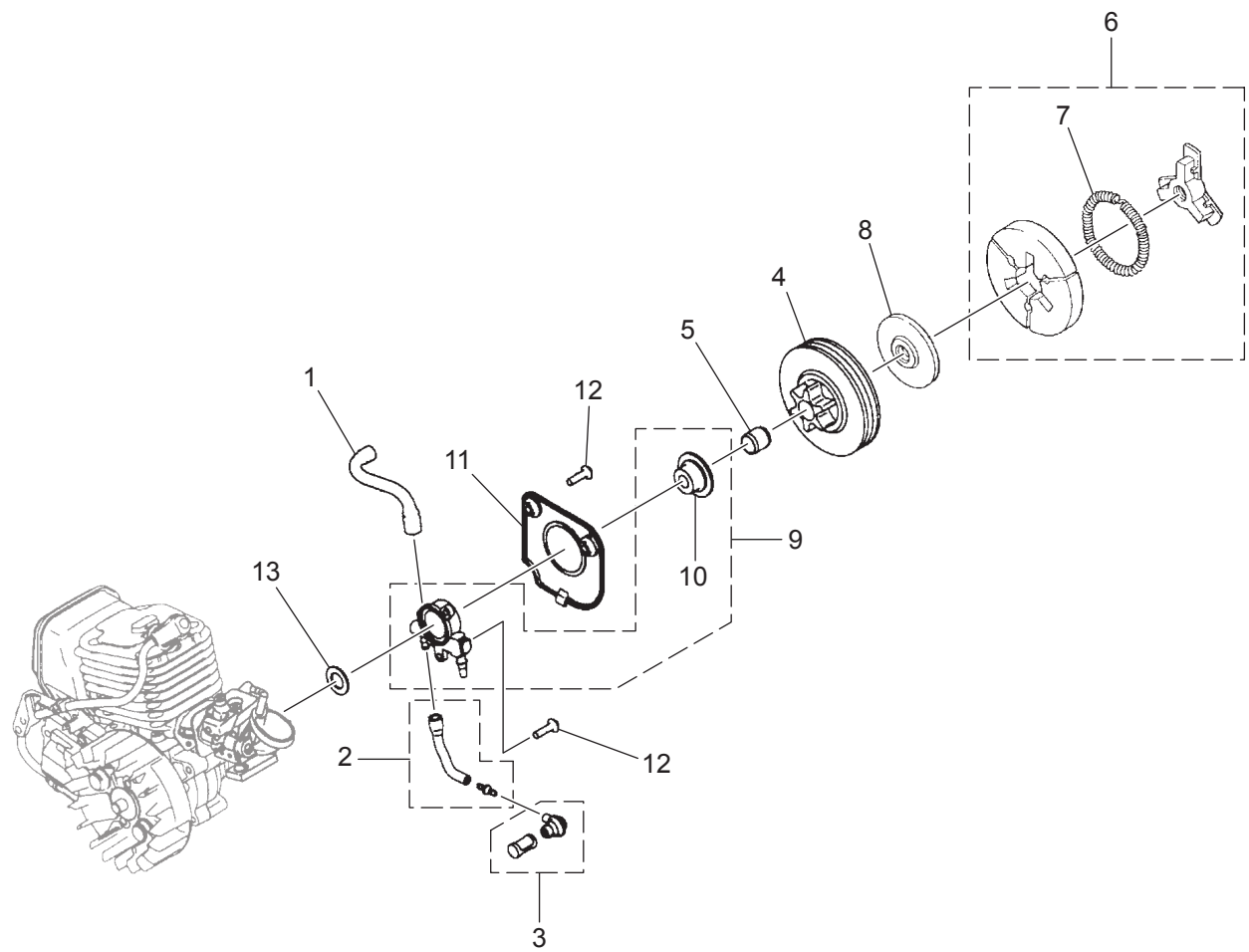
* After this serial number (SN),
these two parts became discontinued.

Fig.2 POWER UNIT 02

POWER UNIT 02

2016.01

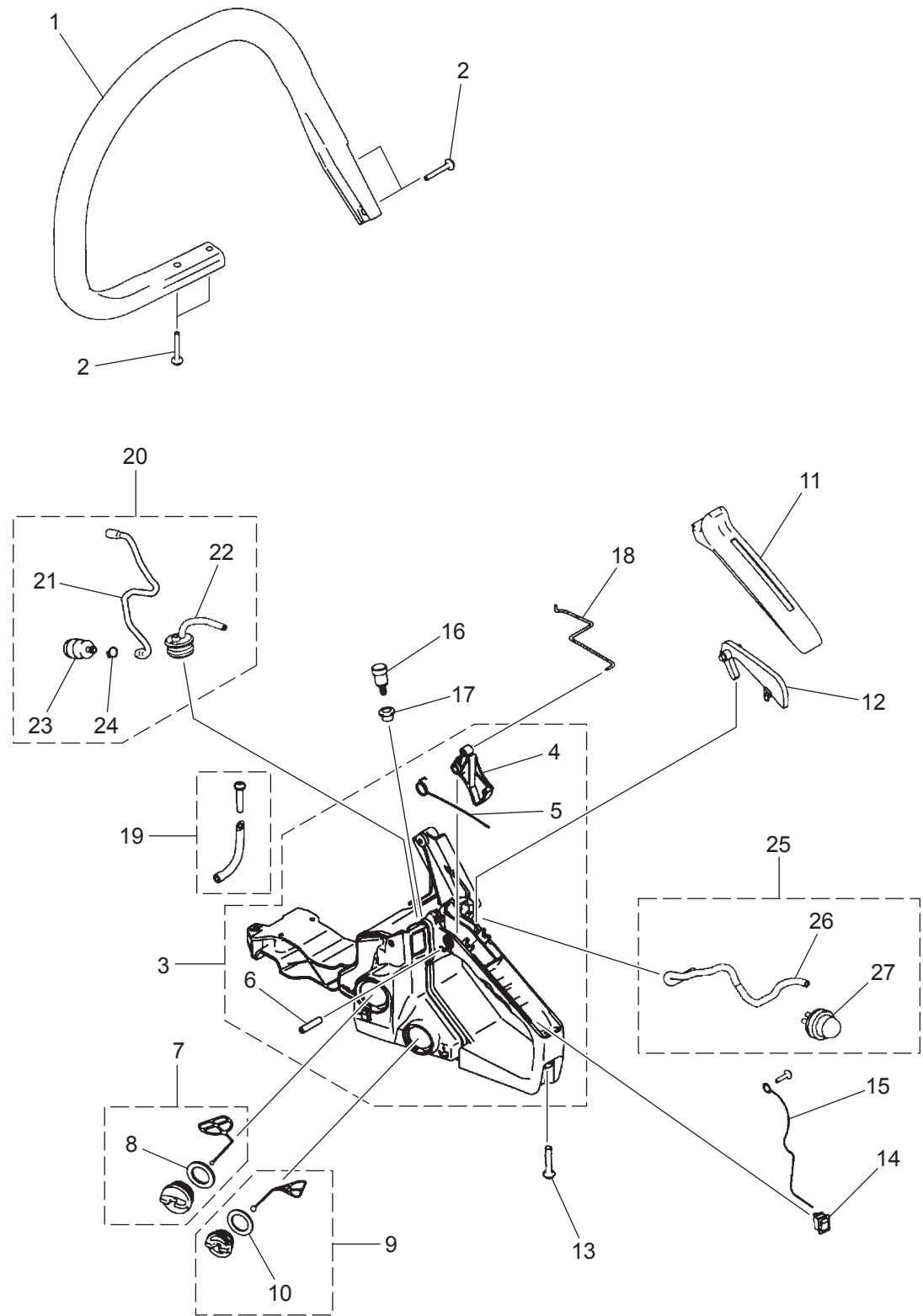
Fig.3 OIL PUMP, CLUTCH



OIL PUMP, CLUTCH

2016.01

Fig.4 HANDLES

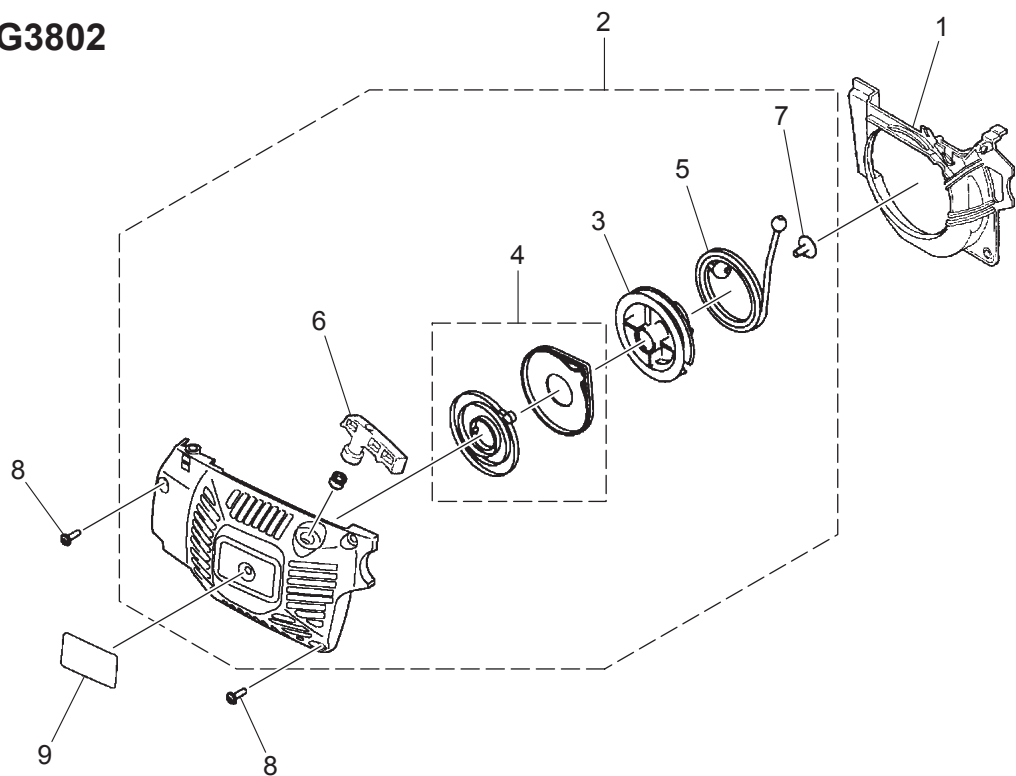


HANDLES

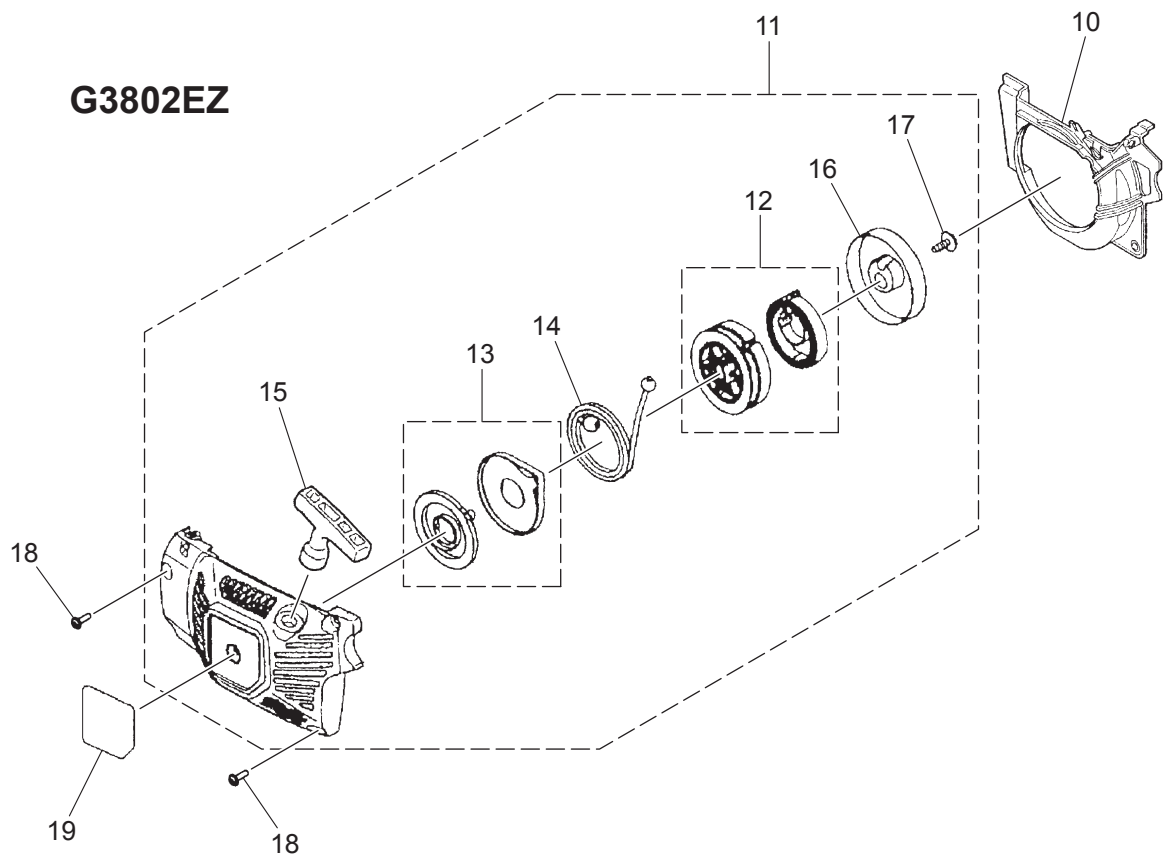
Key#	PART NUMBER	DESCRIPTION	Q'TY	REMARKS
1	T2100-32110	LEFT HANDLE	1	BLACK
2	8488252711	SCREW	4	
3	T2104-33000	RIGHT HANDLE ASSY	1	
4	2850-33313	• THROTTLE LEVER	1	
5	3356-33321	• THROTTLE SPRING	1	
6	04025-00524	• SPRING PIN	1	BLACK GRAY
7	2670-34401	TANK CAP ASSY	1	
8	2670-34430	• GASKET	1	
9	848C208511	CAP ASSY	1	
10	2841-31820	• GASKET	1	
11	583 94 20-01	GRIP COVER	1	
12	848C3033E3	ARM	1	
13	8488252711	SCREW	1	
14	586 24 69-01	SWITCH ASSY	1	
15	T2100-74210	CORD	1	
16	2850-34501	BREATHER ASSY	1	
17	3317-85120	GROMMET	1	
18	T2100-82512	THROTTLE ROD	1	
19	848C406761	PIPE COMP.	1	
20	848C4A8533	PIPE ASSY	1	
21	8488G12150	• FUEL PIPE	1	
22	2850-34322	• GROMMET	1	
23	1850-85300	• FILTER ASSY	1	
24	1260-85460	• CLIP	1	
25	848C408120	PUMP ASSY	1	
26	285082611	• PIPE	1	
27	2850-81900	• PUMP	1	

Fig.5 STARTER ASSY

G3802

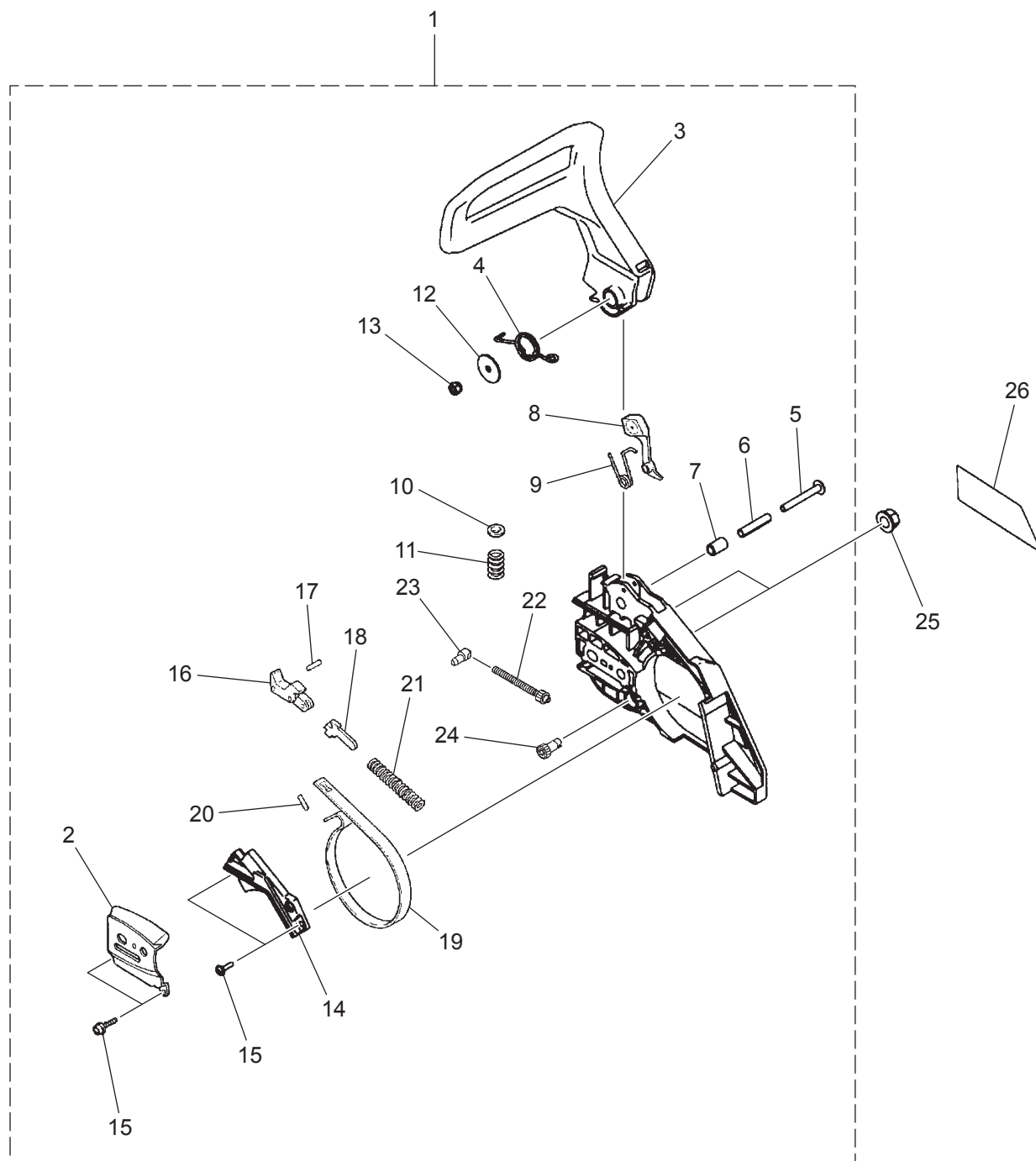


G3802EZ



STARTER ASSY

2016.01

Fig.6 CHAIN BRAKE ASSY

CHAIN BRAKE ASSY

14

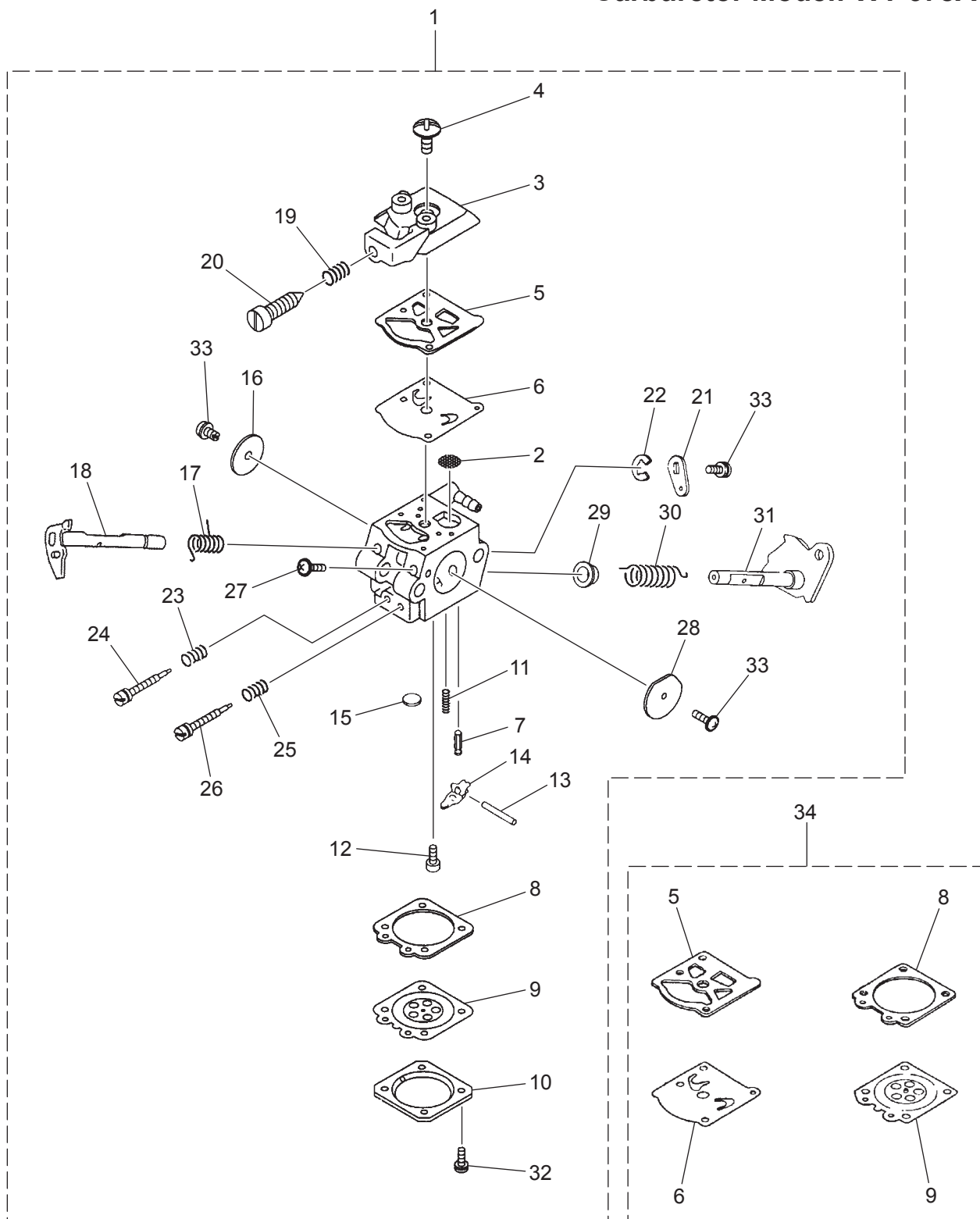
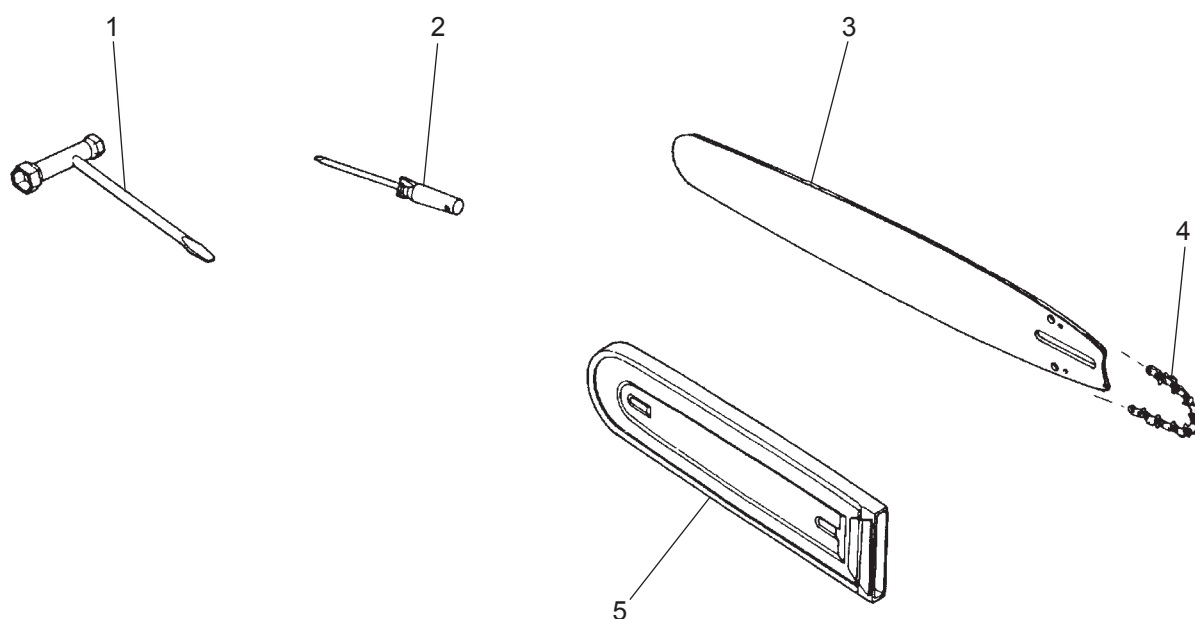
Carburetor Model: WT-678A

Fig. 7 G3802 / G3802EZ

CARBURETOR COMPONENTS

Key#	PART NUMBER	DESCRIPTION	Q'TY	REMARKS
1	848C4X8100	CARBURETOR ASSY	1	WT-678A
2	3306-81380	• SCREEN	1	
3	2850-81120	• PUMP COVER	1	
4	3310-81130	• SCREW	1	
5	3304-81140	• GASKET PUMP	1	
6	3304-81150	• DIAPHRAGM PUMP	1	
7	3356-81310	• VALVE	1	
8	2850-81290	• GASKET	1	
9	3310-81260	• DIAPHRAGM	1	
10	3310-81280	• COVER	1	
11	2867-81270	• SPRING	1	
12	3310-81240	• SCREW M LEVER PIN	1	
13	3310-81250	• PIN LEVER	1	
14	3310-81230	• LEVER	1	
15	1480-81420	• PLUG	1	
16	3356-81340	• THROTTLE VALVE	1	
17	2670-81410	• THROTTLE SPRING	1	
18	2850-81371	• THROTTLE SHAFT	1	
19	3350-81380	• SPRING	1	
20	2630-81330	• IDLE SCREW	1	
21	2670-81440	• THROTTLE LEVER	1	
22	1148-81390	• RING	1	
23	1491-81160	• L NEEDLE SPRING	1	
24	2850-81170	• L NEEDLE	1	
25	3080-81320	• H NEEDLE SPRING	1	
26	T2104-81330	• H NEEDLE	1	
27	2850-81190	• SCREW	1	
28	2841-81450	• CHOKE VALVE	1	
29	2850-81430	• BUSH	1	
30	2850-81350	• CHOKE SPRING	1	
31	2850-81461	• CHOKE SHAFT	1	
32	3310-81351	• SCREW	4	
33	2880-81470	• SCREW VALVE	3	
34	848C400621	GASKET KIT	1	(OP)



SPECIAL TOOLS

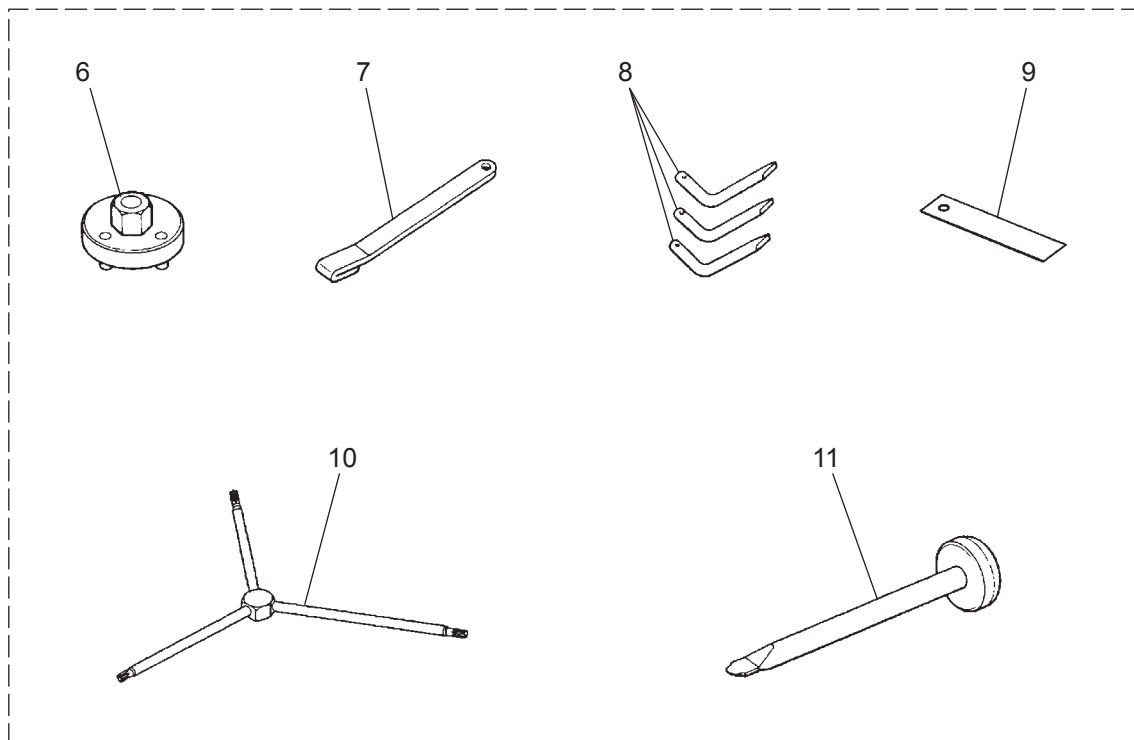


Fig. 9 G3802 / G3802EZ ACCESSORIES and SPECIAL TOOLS

[illegible]