



# PARTS LIST

## CHAIN SAW

### G4101

**NOTE :**

1. Use HUSQVARNA ZENOAH genuine parts as specified in the parts list for repair and/or replacement.
2. HUSQVARNA ZENOAH does not warrant the machines, which have been damaged by the use of any parts other than those specified by the company.
3. When placing parts orders for repair and/or replacement, check if the model name and the serial number are applicable to those specified in the parts list, then use parts number described in the parts list.
4. The contents described in the parts list are accurate as of the date and may change due to improvement.
5. The parts for the machine shall be supplied ten (10) years after the machine is discontinued. [It is possible that some specific parts may be subject to change of their delivery term and list price within the limit of ten (10) years after the machine is discontinued. It is also possible that some parts may be available even after the limit of ten (10) years.]

---

APPLICABLE SERIAL NUMBERS:

2015 4711359 and up

January 2016

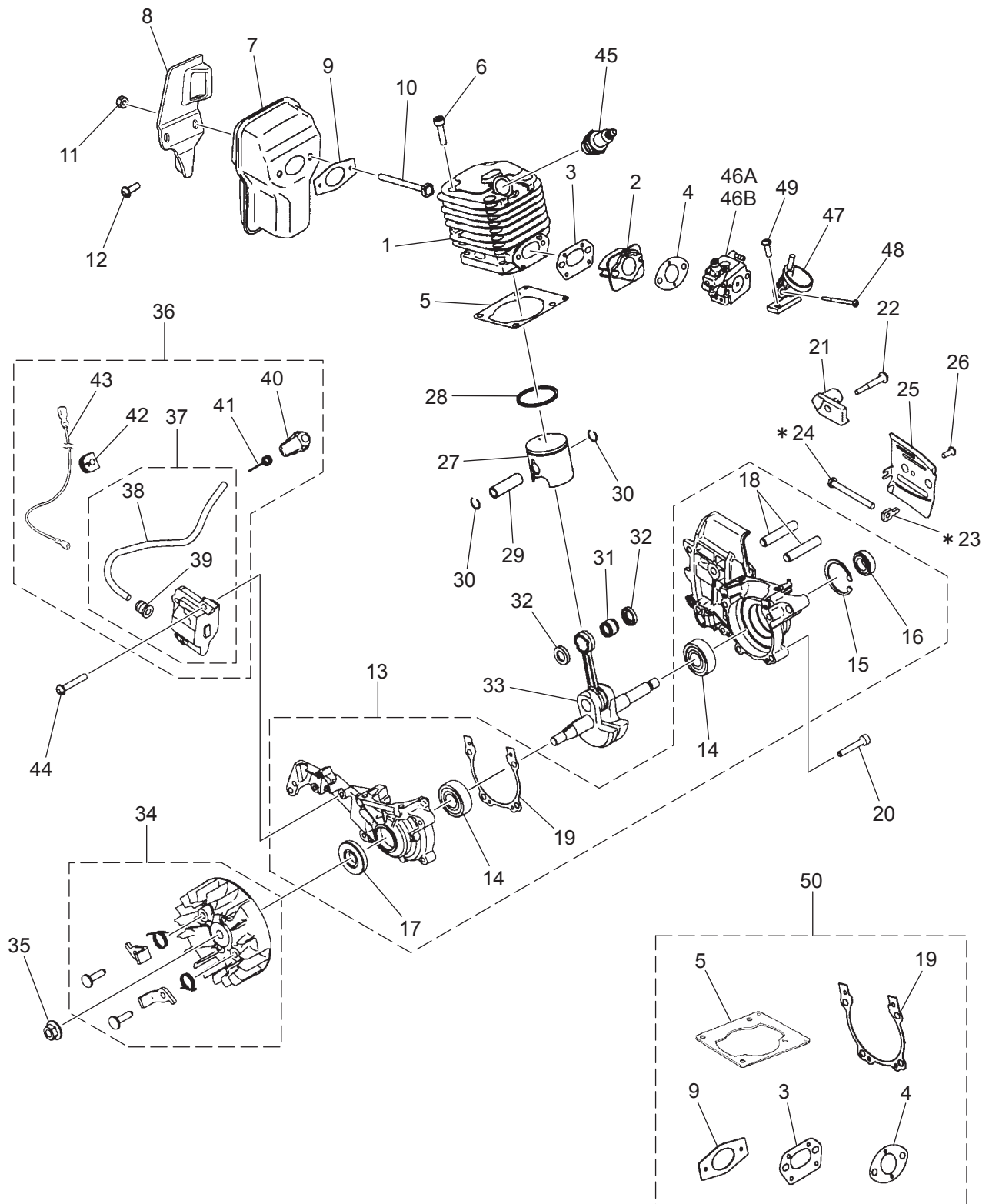


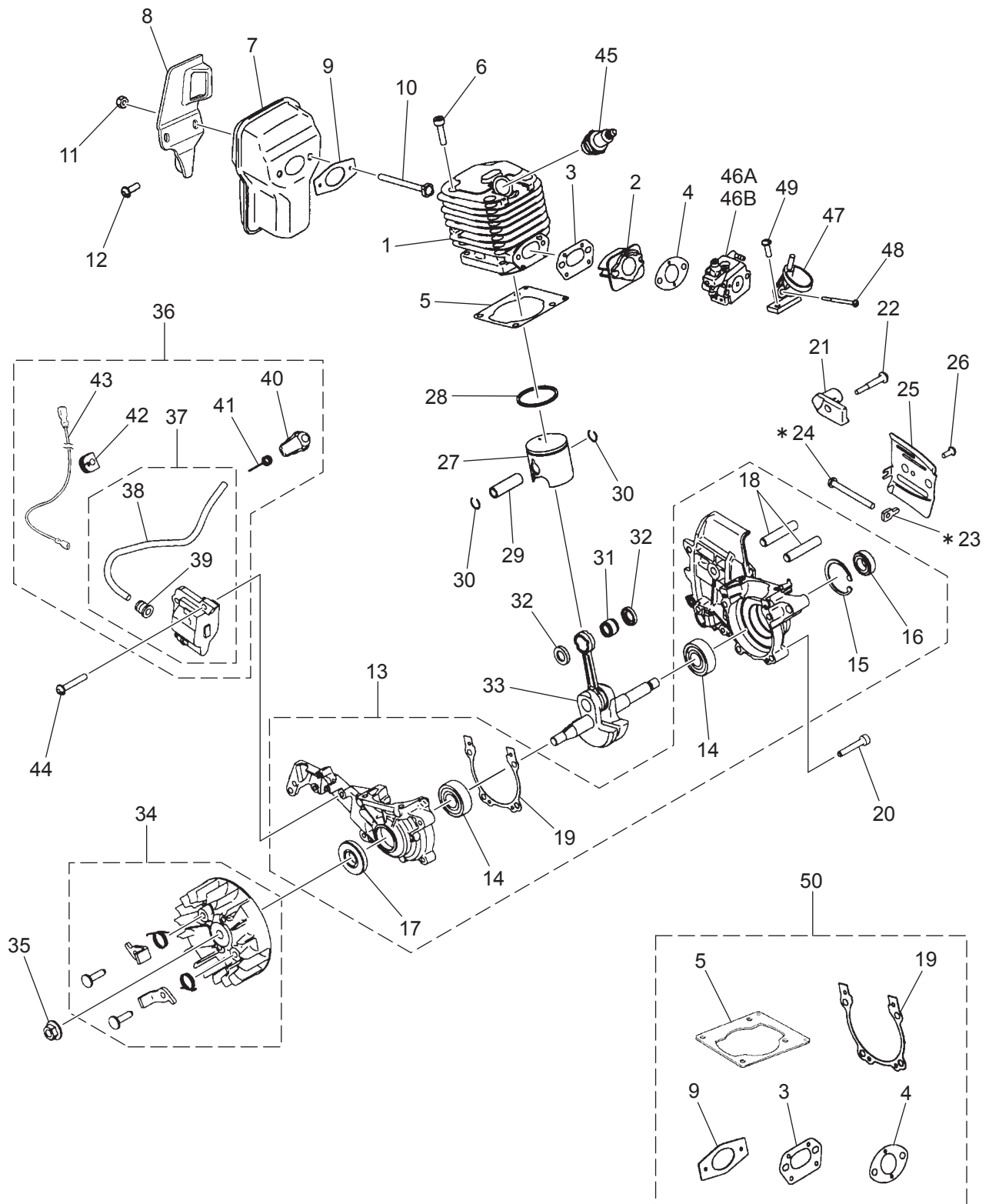
Fig. 1 G4101

## POWER UNIT 01

| Key# | PART NUMBER  | DESCRIPTION      | Q'TY | REMARKS           |
|------|--------------|------------------|------|-------------------|
| 1    | 2869-12110   | CYLINDER         | 1    |                   |
| 2    | 2867-14110   | INSULATOR        | 1    |                   |
| 3    | 2850-14123   | GASKET, INLET    | 1    |                   |
| 4    | 3330-14121   | GASKET, CARB     | 1    |                   |
| 5    | 2850-14212   | GASKET, CYLINDER | 1    |                   |
| 6    | 4820-13180   | BOLT             | 4    |                   |
| 7    | T2100-15112  | MUFFLER          | 1    |                   |
| 8    | T2100-15311  | STAY             | 1    |                   |
| 9    | T2100-15210  | GASKET, MUFFLER  | 1    |                   |
| 10   | T2100-15220  | BOLT, MUFFLER    | 2    |                   |
| 11   | 2850-15230   | NUT, MUFFLER     | 2    | M5                |
| 12   | 578 46 83-01 | SCREW            | 1    | M5xL14            |
| 13   | 848C402102   | CRANKCASE ASSY   | 1    |                   |
| 14   | 84889C3200   | • BEARING        | 2    |                   |
| 15   | 04065-03212  | • SNAP RING      | 1    |                   |
| 16   | 2169-21210   | • SEAL           | 1    |                   |
| 17   | 8488AC3210   | • OIL SEAL       | 1    |                   |
| 18   | 2616-21230   | • STUD           | 2    |                   |
| 19   | T2100-21310  | • GASKET, CASE   | 1    |                   |
| 20   | 4820-21310   | BOLT             | 4    |                   |
| 21   | 848C3066F2   | CHAIN CATCHER    | 1    |                   |
| 22   | 577 82 37-01 | SCREW            | 1    |                   |
| 23   | T2100-53220  | NUT TENSIONER    | 1    | * SN~2015 3801358 |
| 24   | T2100-53210  | SCREW            | 1    | * SN~2015 3801358 |
| 25   | 2850-25411   | PLATE, A         | 1    |                   |
| 26   | 2670-25430   | SCREW            | 1    |                   |
| 27   | 2869-41110   | PISTON           | 1    |                   |
| 28   | 8488C41200   | RING             | 1    |                   |
| 29   | 2850-41310   | PEN              | 1    |                   |
| 30   | 1300-41320   | SNAP RING        | 2    |                   |
| 31   | T2100-41410  | BEARING          | 1    |                   |
| 32   | 2850-41510   | WASHER           | 2    |                   |
| 33   | T2100-42000  | SHAFT COMP.      | 1    |                   |
| 34   | T2100-71100  | ROTOR COMP.      | 1    |                   |
| 35   | 1650-43230   | NUT              | 1    |                   |
| 36   | T2100-71300  | COIL ASSY        | 1    |                   |
| 37   | T2100-71200  | • COIL COMP.     | 1    |                   |
| 38   | T2100-71220  | • • CORD         | 1    |                   |
| 39   | 2616-71320   | • • CAP          | 1    |                   |
| 40   | 2850-72110   | • CAP            | 1    |                   |
| 41   | 1400-72121   | • SPRING         | 1    |                   |
| 42   | 5500-72130   | • GROMMET        | 1    |                   |
| 43   | T2100-71510  | • CORD, SWITCH   | 1    |                   |
| 44   | 2670-55410   | SCREW            | 2    |                   |
| 45   | 3699-90032A  | SPARK PLUG       | 1    | RCJ7Y             |

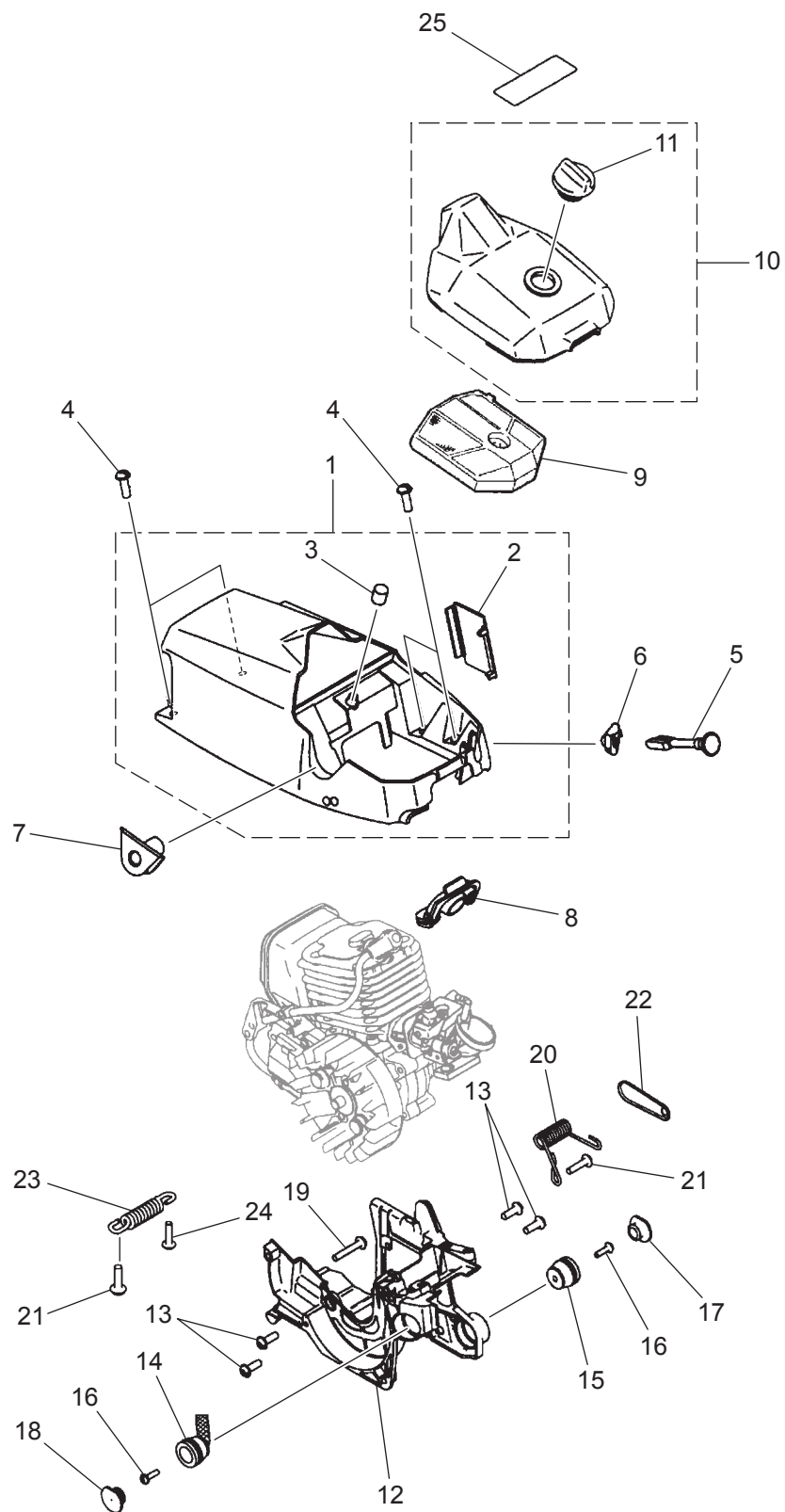
\* After this serial number,  
these two parts became discontinued.

Fig.1 POWER UNIT 01



## POWER UNIT 01

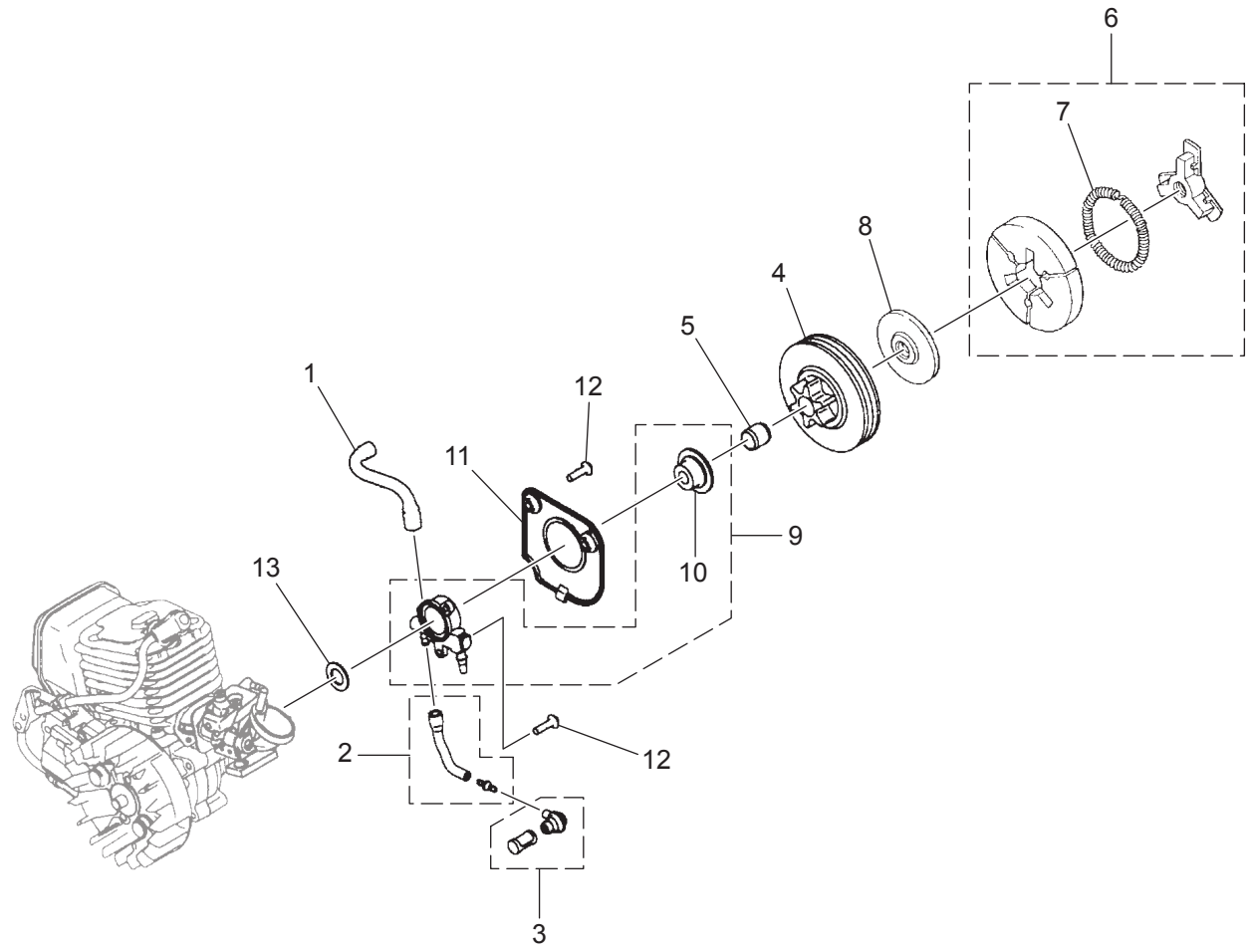
\* After this serial number (SN),  
these two parts became discontinued.



## POWER UNIT 02

2016.01

Fig.3 OIL PUMP, CLUTCH

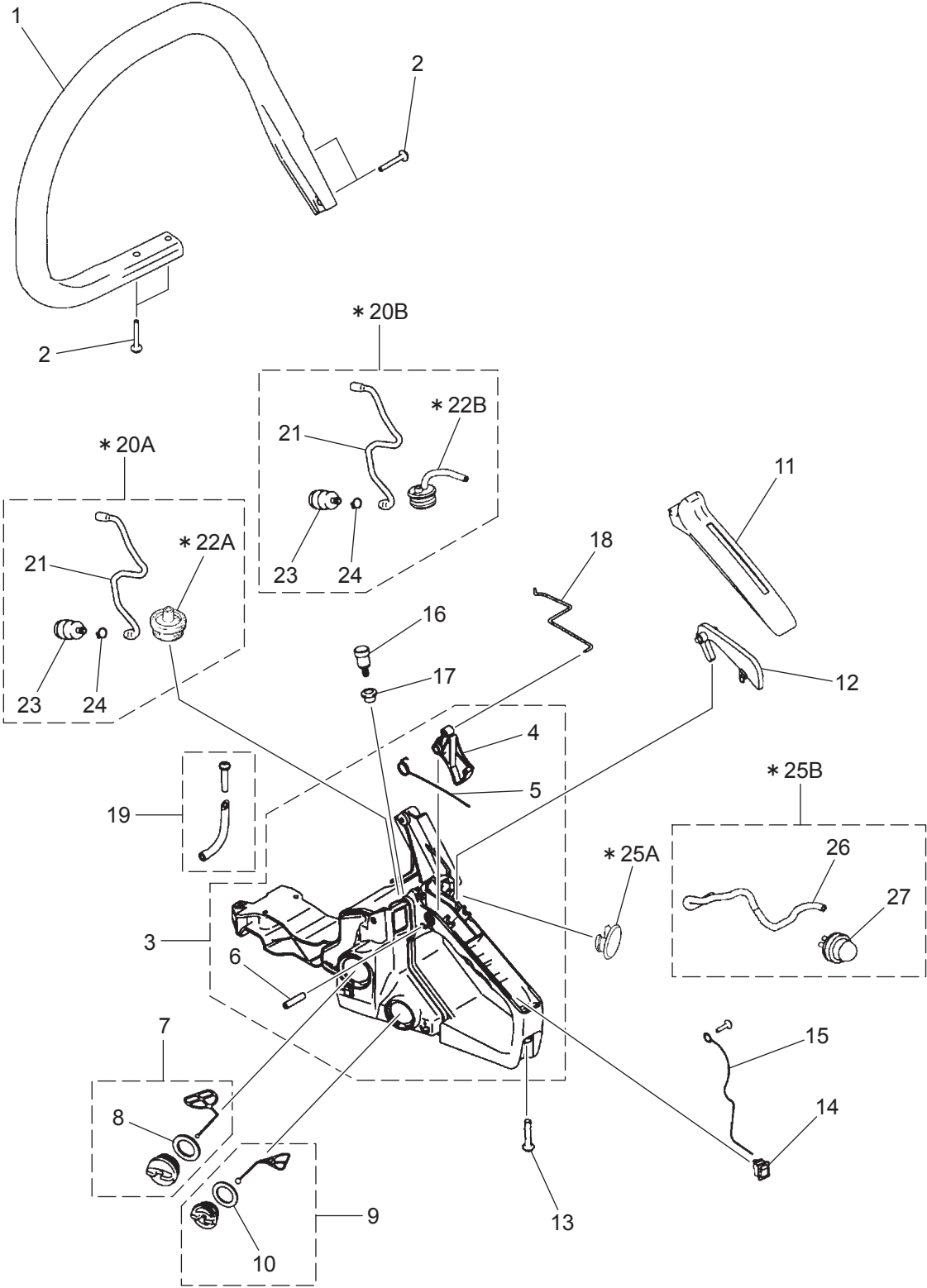




## OIL PUMP, CLUTCH

[illegible]

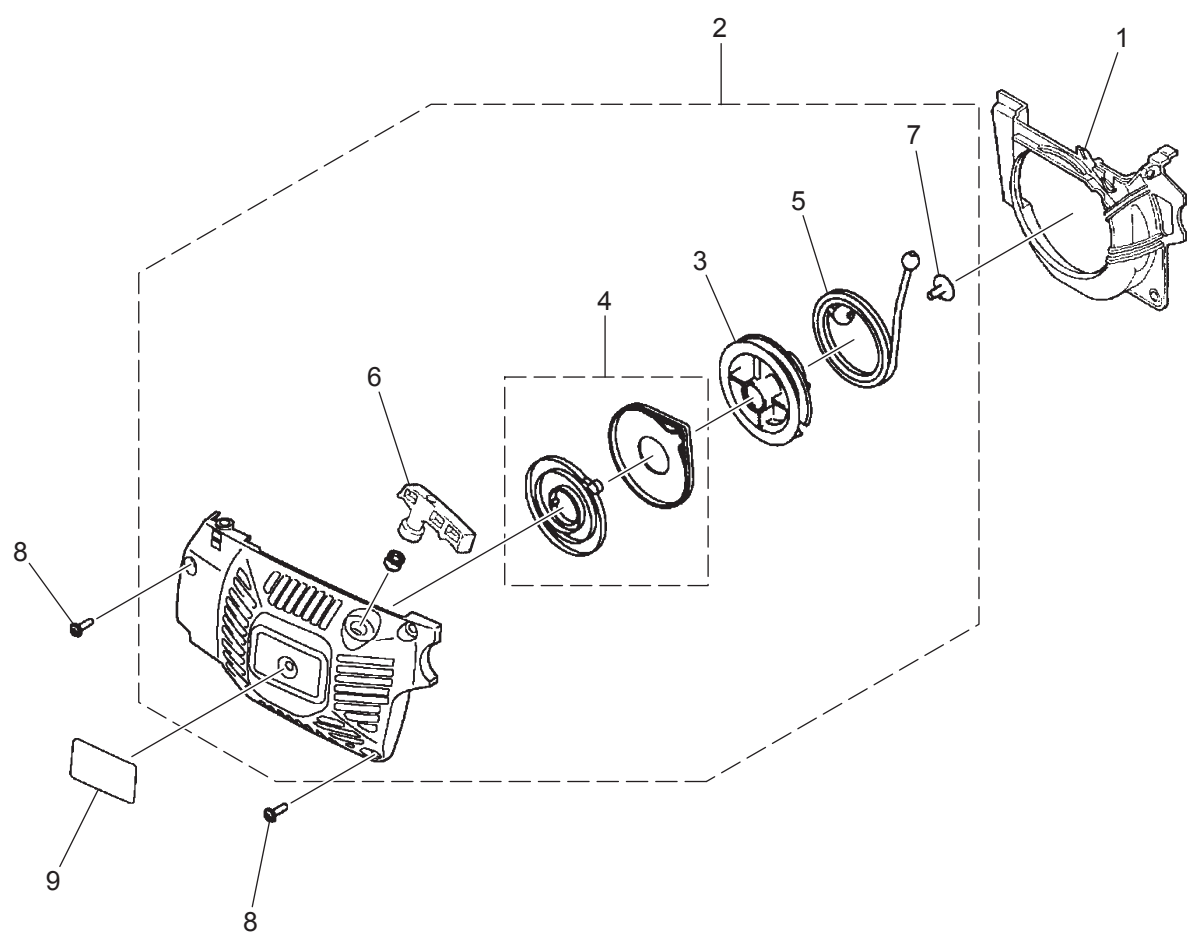
Fig.4 HANDLES



## HANDLES

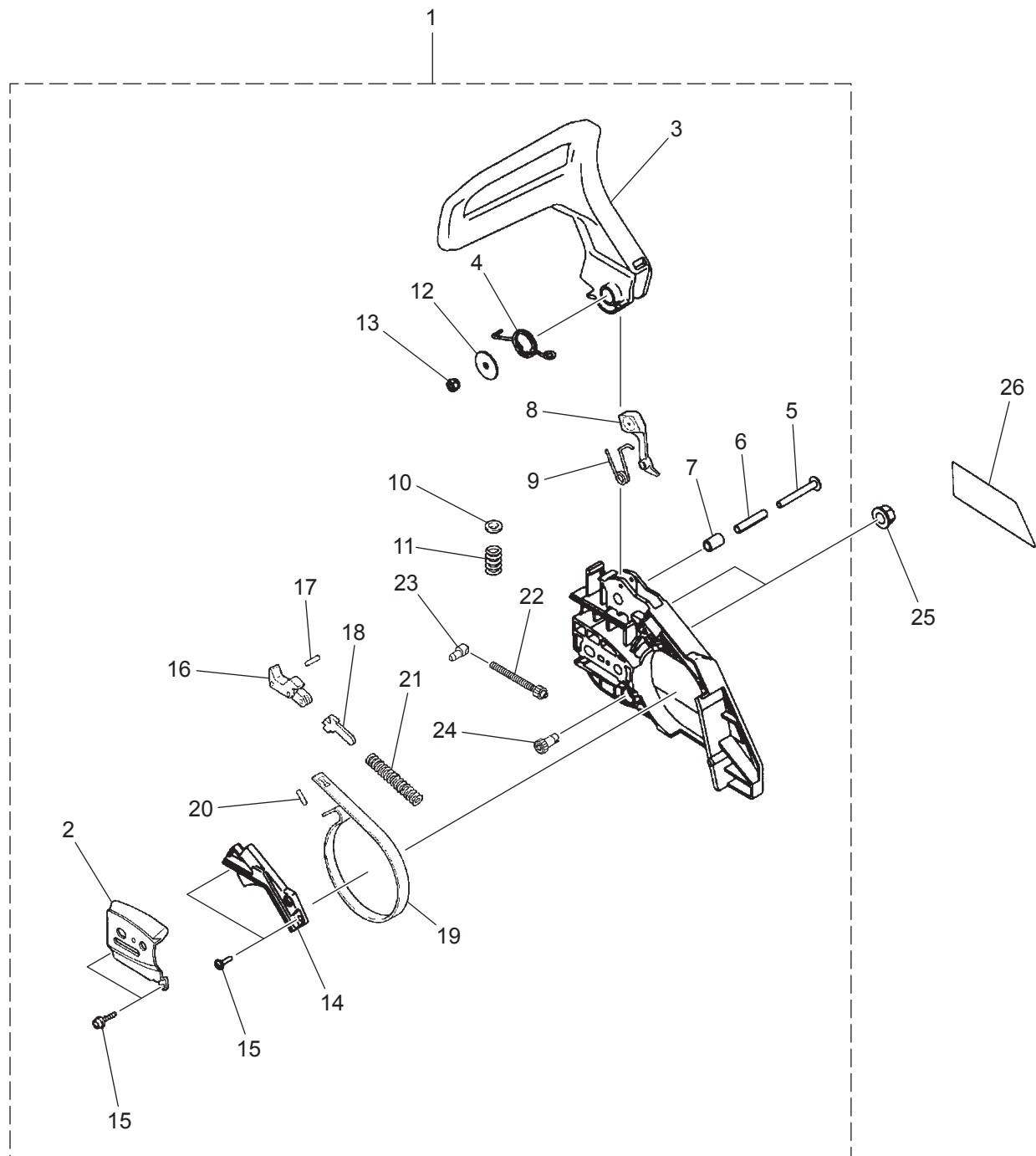
2016.01

Fig.5 STARTER ASSY



## STARTER ASSY

2016.01

**Fig.6 CHAIN BRAKE ASSY**

## CHAIN BRAKE ASSY

---

14

**Fig.7 CARBURETOR COMPONENTS**

**Carburetor Model: WT-509A**  
**~ #2015 3801358**  
**(for without a Priming pump)**

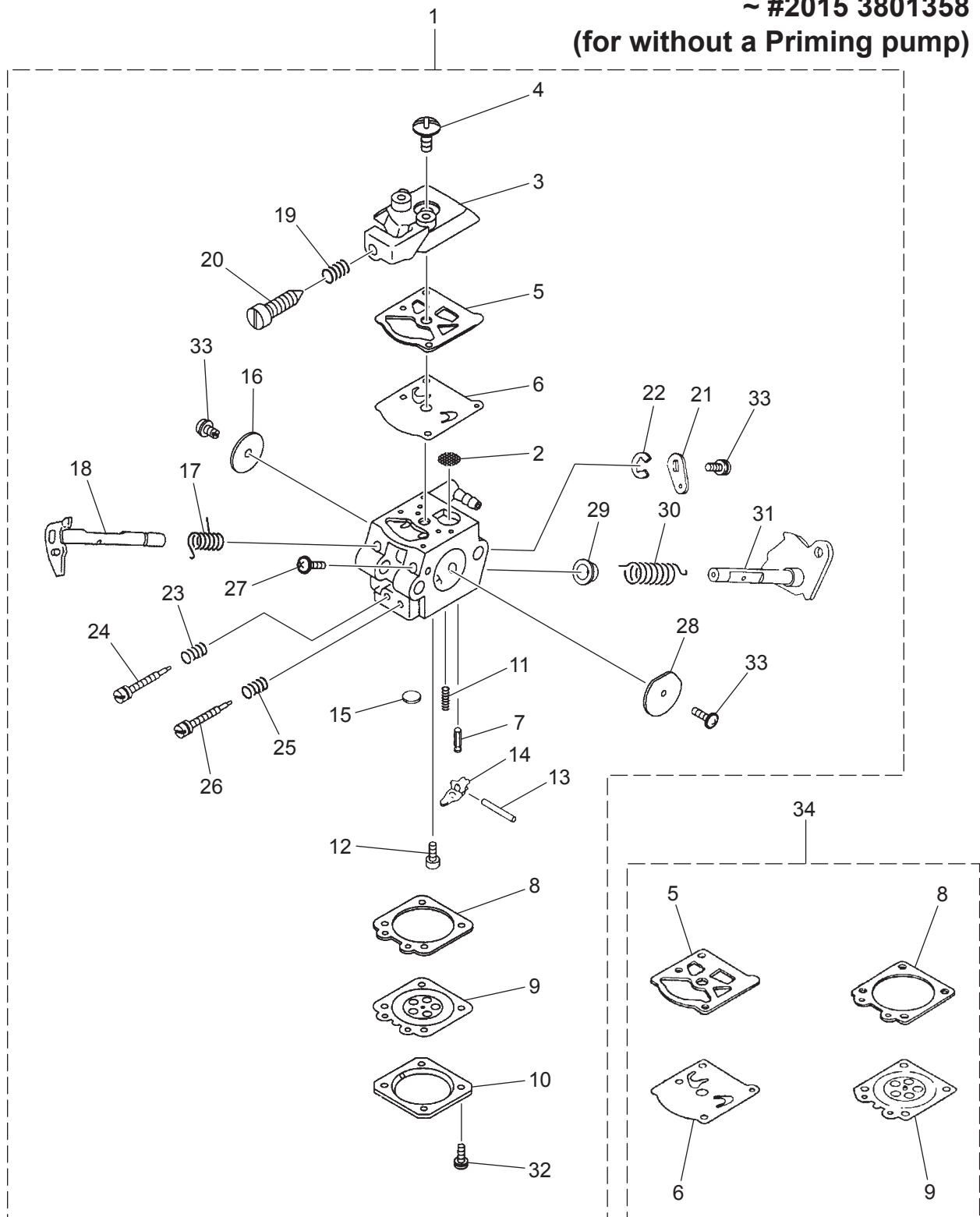




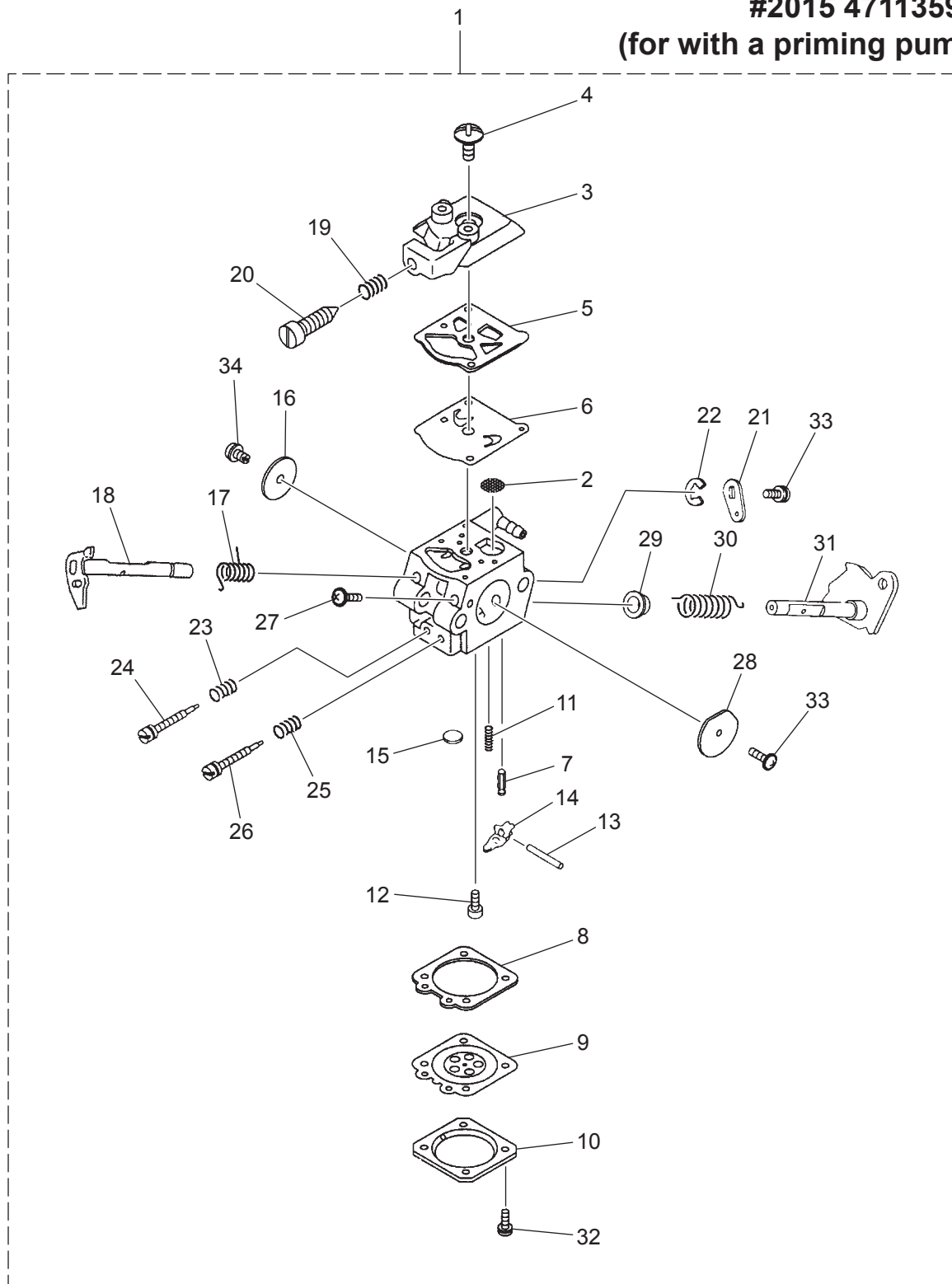
Fig. 7 G4101

## CARBURETOR COMPONENTS

| Key# | PART NUMBER | DESCRIPTION         | Q'TY | REMARKS |
|------|-------------|---------------------|------|---------|
| 1    | 2869-81000  | CARBURETOR ASSY     | 1    | WT-509A |
| 2    | 3306-81380  | • SCREEN            | 1    |         |
| 3    | 2850-81120  | • PUMP COVER        | 1    |         |
| 4    | 3310-81130  | • SCREW             | 1    |         |
| 5    | 3304-81140  | • GASKET PUMP       | 1    |         |
| 6    | 3304-81150  | • DIAPHRAGM PUMP    | 1    |         |
| 7    | 3356-81310  | • VALVE             | 1    |         |
| 8    | 2850-81290  | • GASKET            | 1    |         |
| 9    | 3310-81260  | • DIAPHRAGM         | 1    |         |
| 10   | 3310-81280  | • COVER             | 1    |         |
| 11   | 2867-81270  | • SPRING            | 1    |         |
| 12   | 3310-81240  | • SCREW M LEVER PIN | 1    |         |
| 13   | 3310-81250  | • PIN LEVER         | 1    |         |
| 14   | 3310-81230  | • LEVER             | 1    |         |
| 15   | 1480-81420  | • PLUG              | 1    |         |
| 16   | 3356-81340  | • THROTTLE VALVE    | 1    |         |
| 17   | 2670-81410  | • THROTTLE SPRING   | 1    |         |
| 18   | 2850-81371  | • THROTTLE SHAFT    | 1    |         |
| 19   | 3350-81380  | • SPRING            | 1    |         |
| 20   | 2630-81330  | • IDLE SCREW        | 1    |         |
| 21   | 2670-81440  | • THROTTLE LEVER    | 1    |         |
| 22   | 1148-81390  | • RING              | 1    |         |
| 23   | 1491-81160  | • L NEEDLE SPRING   | 1    |         |
| 24   | 2869-81170  | • L NEEDLE          | 1    |         |
| 25   | 3080-81320  | • H NEEDLE SPRING   | 1    |         |
| 26   | 2850-81330  | • H NEEDLE          | 1    |         |
| 27   | 2850-81190  | • SCREW             | 1    |         |
| 28   | 2670-81450  | • CHOKE VALVE       | 1    |         |
| 29   | 2850-81430  | • BUSH              | 1    |         |
| 30   | 2850-81350  | • CHOKE SPRING      | 1    |         |
| 31   | 2850-81461  | • CHOKE SHAFT       | 1    |         |
| 32   | 3310-81351  | • SCREW             | 4    |         |
| 33   | 2880-81470  | • SCREW VALVE       | 3    |         |
| 34   | 848C400621  | GASKET KIT          | 1    | (OP)    |
|      |             |                     |      |         |
|      |             |                     |      |         |
|      |             |                     |      |         |

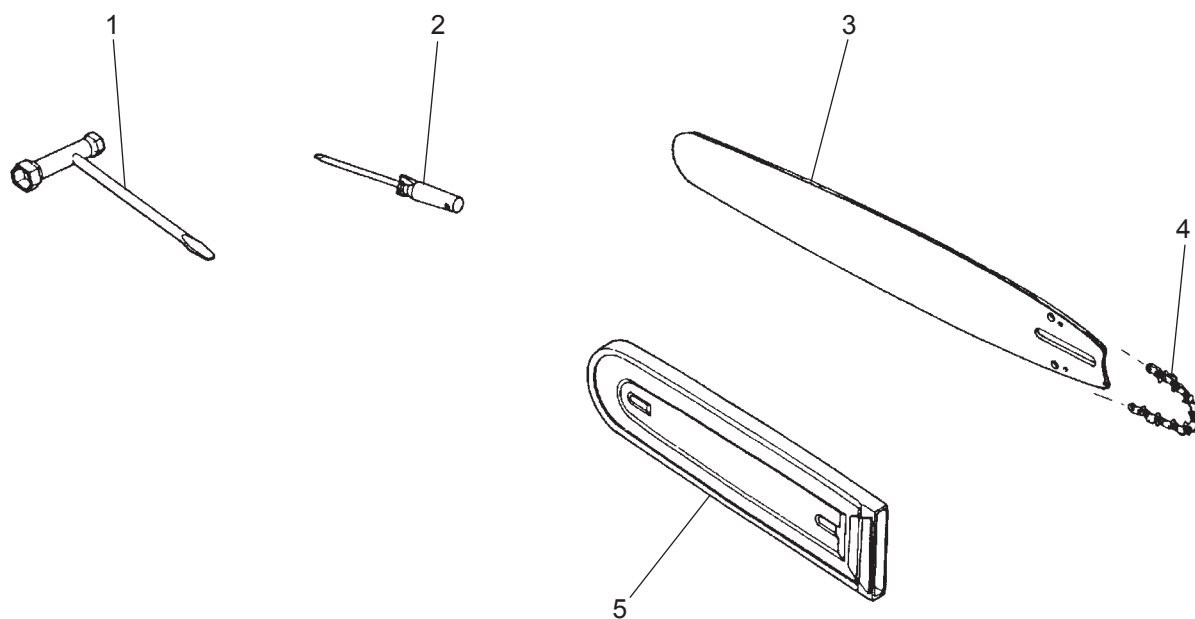
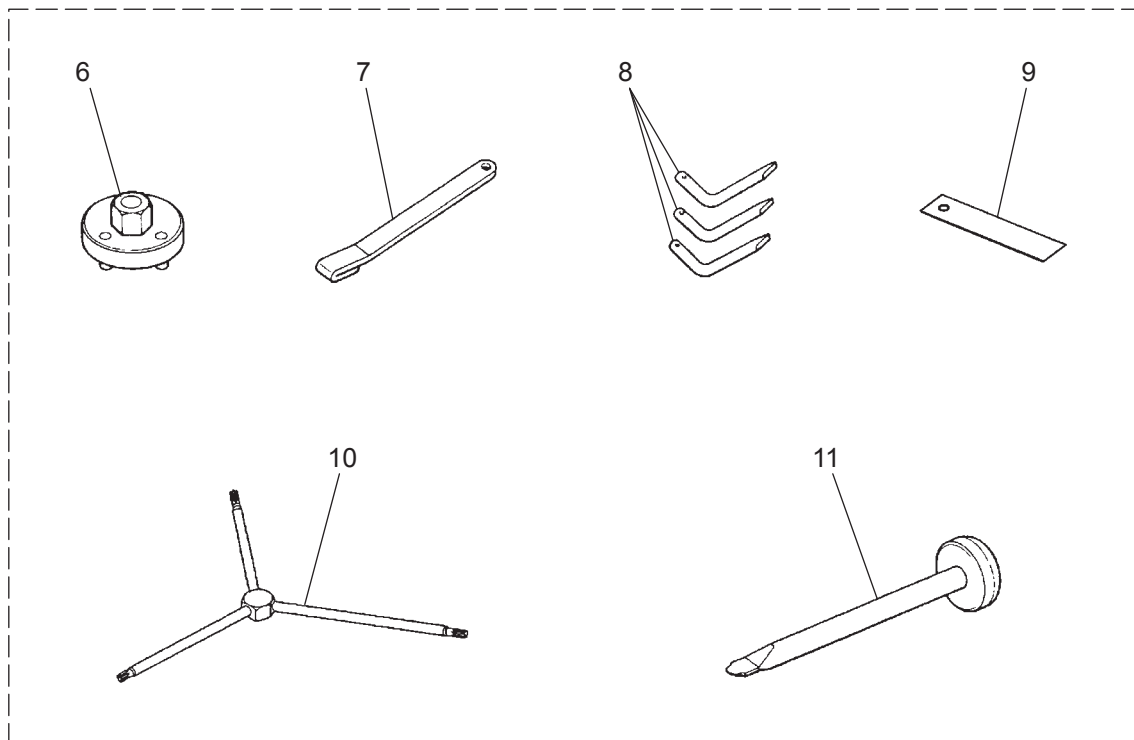
**Fig.8 CARBURETOR COMPONENTS**

**Carburetor Model: WT-1164**  
**#2015 4711359 ~**  
**(for with a priming pump)**



**Fig. 8 G4101**
**CARBURETOR COMPONENTS**

| Key# | PART NUMBER  | DESCRIPTION         | Q'TY | REMARKS |
|------|--------------|---------------------|------|---------|
| 1    | 588 16 79-01 | CARBURETOR ASSY     | 1    | WT-1164 |
| 2    | 3306-81380   | • SCREEN            | 1    |         |
| 3    | 579 84 90-01 | • PUMP COVER        | 1    |         |
| 4    | 3310-81130   | • SCREW             | 1    |         |
| 5    | 3304-81140   | • GASKET PUMP       | 1    |         |
| 6    | 3304-81150   | • DIAPHRAGM PUMP    | 1    |         |
| 7    | 3356-81310   | • VALVE             | 1    |         |
| 8    | 2850-81290   | • GASKET            | 1    |         |
| 9    | 848HE081K0   | • DIAPHRAGM         | 1    |         |
| 10   | 3310-81280   | • COVER             | 1    |         |
| 11   | 2867-81270   | • SPRING            | 1    |         |
| 12   | 3310-81240   | • SCREW M LEVER PIN | 1    |         |
| 13   | 3310-81250   | • PIN LEVER         | 1    |         |
| 14   | 3310-81230   | • LEVER             | 1    |         |
| 15   | 1480-81420   | • PLUG              | 1    |         |
| 16   | 579 84 91-01 | • THROTTLE VALVE    | 1    |         |
| 17   | 2670-81410   | • THROTTLE SPRING   | 1    |         |
| 18   | 579 84 92-01 | • THROTTLE SHAFT    | 1    |         |
| 19   | 2630-81460   | • SPRING            | 1    |         |
| 20   | 577 81 57-01 | • IDLE SCREW        | 1    |         |
| 21   | 2670-81440   | • THROTTLE LEVER    | 1    |         |
| 22   | 1148-81390   | • RING              | 1    |         |
| 23   | 1491-81160   | • L NEEDLE SPRING   | 1    |         |
| 24   | 2869-81170   | • L NEEDLE          | 1    |         |
| 25   | 3080-81320   | • H NEEDLE SPRING   | 1    |         |
| 26   | 2850-81330   | • H NEEDLE          | 1    |         |
| 27   | 2850-81190   | • SCREW             | 1    |         |
| 28   | 2670-81450   | • CHOKE VALVE       | 1    |         |
| 29   | 2850-81430   | • BUSH              | 1    |         |
| 30   | 2850-81350   | • CHOKE SPRING      | 1    |         |
| 31   | 2850-81461   | • CHOKE SHAFT       | 1    |         |
| 32   | 3310-81351   | • SCREW             | 4    |         |
| 33   | 2880-81470   | • SCREW VALVE       | 2    |         |
| 34   | 579 49 28-01 | • SCREW             | 1    |         |
|      |              |                     |      |         |
|      |              |                     |      |         |
|      |              |                     |      |         |

**SPECIAL TOOLS**

## ACCESSORIES and SPECIAL TOOLS

[illegible]