



# PARTS LIST

**CHAIN SAW**

**G5201P**

( for KOREA )

**NOTE :**

1. Use HUSQVARNA ZENOAH genuine parts specified in the parts list for repair and/or replacement.
2. HUSQVARNA ZENOAH does not warrant the machines, those which have been damaged by the use of any parts other than those specified by the company.
3. When placing orders of parts for repair and/or replacement, check if the model name and the serial number are suitable to those specified in the parts list, then use parts number described in the parts list.
4. The contents described in the parts list may change due to improvement.
5. The parts for the machine shall be supplied within ten (10) years after the machine is discontinued. [It is possible that some specific parts may be subject to change of their delivery term and list price within the limit of ten (10) years after the machine is discontinued. And it is also possible that some parts may be available even after the limit of ten (10) years.]

APPLICABLE SERIAL NUMBERS:

20152900001 and up

December 2015

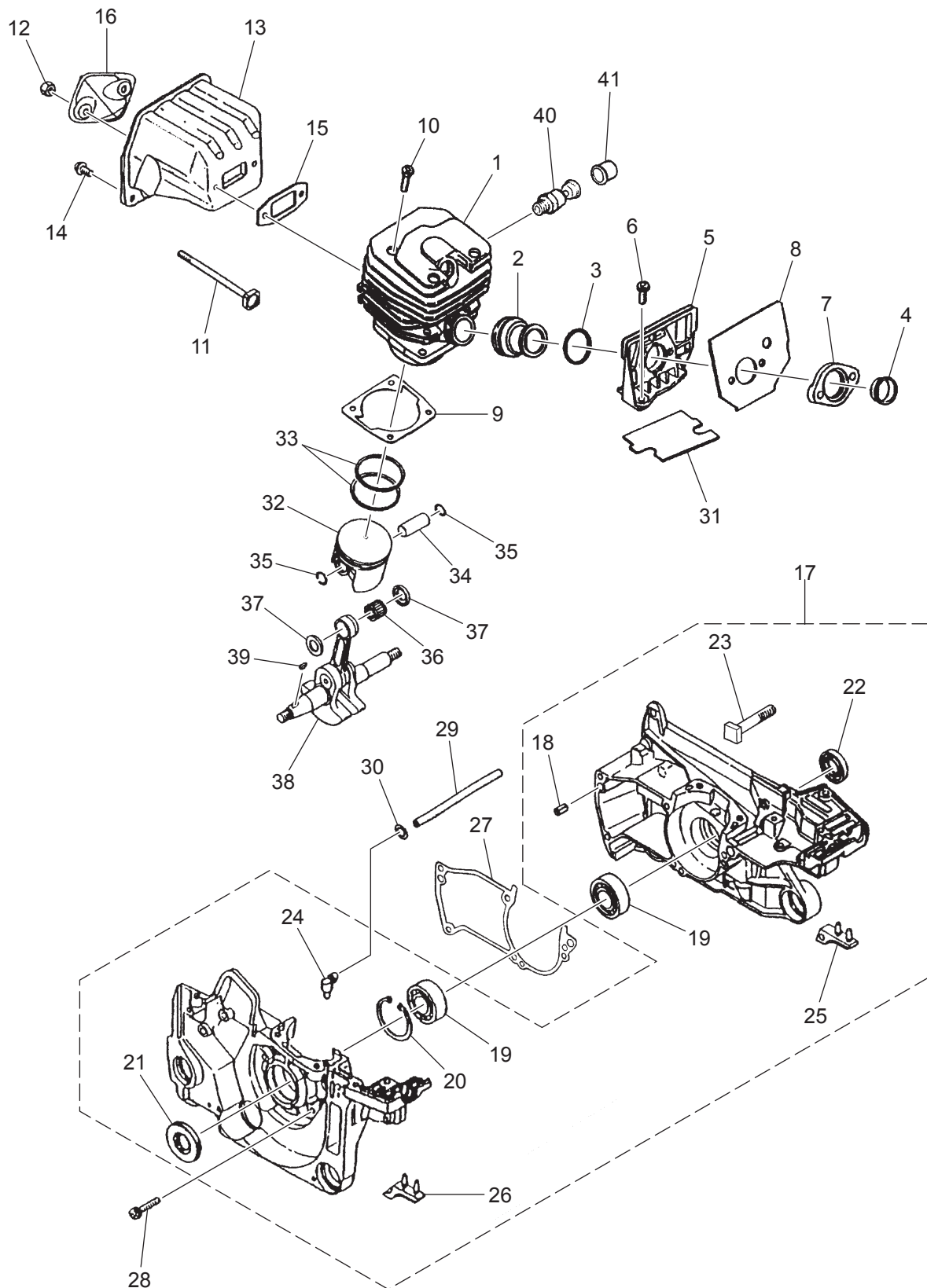
**Fig.1 POWER UNIT**

Fig. 1 G5201P

## POWER UNIT

Key#	PART NUMBER	DESCRIPTION	Q'TY	REMARKS
1	2880-12111	CYLINDER	1	φ 45
2	2880-14111	INLET PIPE	1	
3	2880-14120	SPRING	1	
4	2880-14150	INNER GUIDE	1	
5	2670-14311	BRACKET	1	
6	578 46 83-01	SCREW T27	2	M5x14
7	2880-14350	SPACER	1	
8	2880-14361	GASKET	1	
9	2670-14211	GASKET, CYLINDER	1	
10	4820-13180	BOLT, CYLINDER	4	M5x20
11	2810-15220	BOLT, MUFFLER	2	M5x83
12	2850-15230	NUT, MUFFLER	2	M5
13	5873561-01	MUFFLER	1	
14	2670-14130	SCREW	2	M5x10
15	3356-15210	GASKET, MUFFLER	1	
16	2810-15310	COVER	1	
17	588 80 02-01	CRANKCASE ASSY	1	
18	3356-21130	• SPRING PIN	3	
19	T4012-21240	• BEARING	2	
20	04065-03515	• SNAP RING	1	φ 35
21	2670-21210	• OIL SEAL	1	15x35x4.5
22	2670-21220	• OIL SEAL	1	15x28x4.5
23	2850-21230	• STUD	2	
24	2670-21250	• ELBOW	1	
25	2810-22511	• STOPPER	1	
26	2810-22521	• STOPPER	1	
27	848C8021D2	GASKET, CASE	1	
28	2670-21320	SCREW	5	M5x25
29	2810-22210	PIPE	1	3x7x105
30	3310-82230	CLIP	1	
31	2810-22411	MAT	1	
32	2880-41110	PISTON	1	φ 45
33	2880-41210	PISTON RING	2	φ 45
34	8488BB3800	PISTON PIN	1	7.4x11x37.5
35	3350-41320	SNAP RING	2	
36	1400-41410	NEEDLE BEARING	1	
37	2670-41510	WASHER	2	
38	577 23 04-01	CRANKSHAFT COMP.	1	
39	1000-43240	KEY	1	
40	2884-14100	VALVE ASSY	1	
41	3388-23110	GROMMET	1	

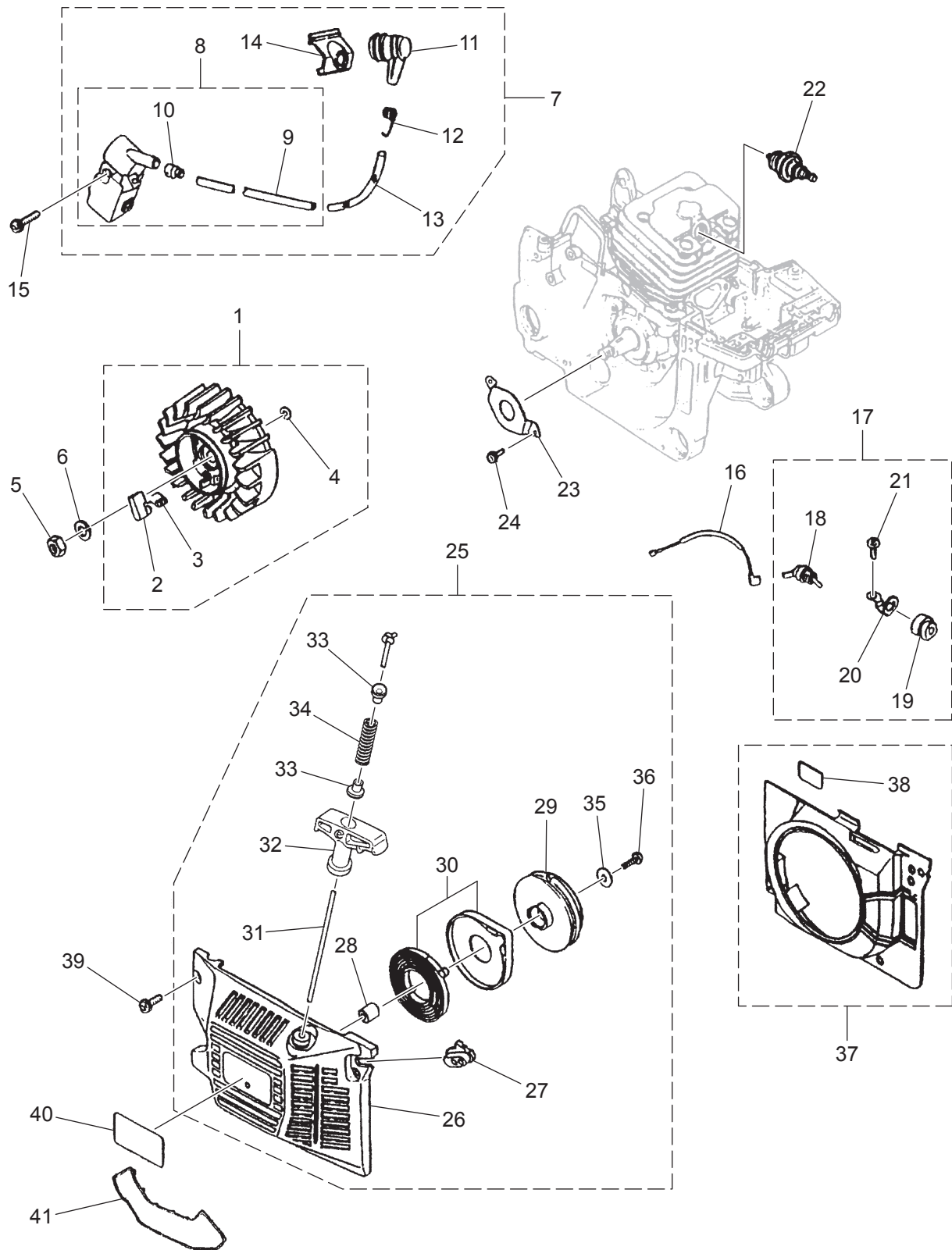
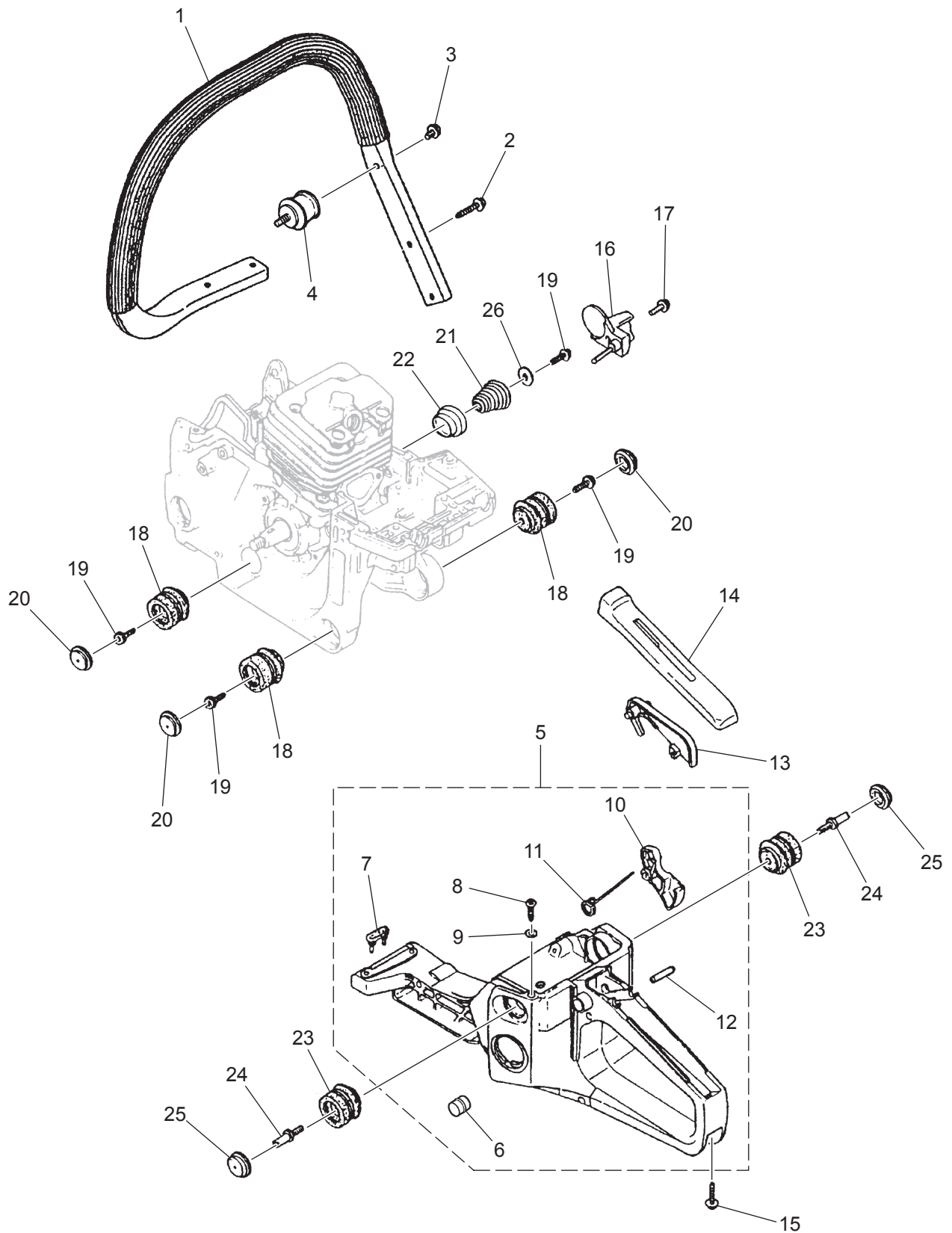
**Fig.2 IGNITION, STARTING**

Fig. 2 G5201P

## IGNITION, STARTING

Key#	PART NUMBER	DESCRIPTION	Q'TY	REMARKS
1	2670-71101	ROTOR ASSY	1	
2	1850-75220	• RATCHET	2	
3	2670-71130	• SPRING	2	
4	0308-00040	• RING	2	
5	3350-43231	NUT	1	M8
6	0290-20820	WASHER	1	M8
7	2880-71300	COIL ASSY	1	
8	2810-71204	• COIL COMP.	1	
9	2810-71220	• • CORD	1	
10	2670-71230	• • GROMMET	1	
11	2810-72110	• PLUG CAP	1	
12	1400-72121	• SPRING	1	
13	2670-71320	• TUBE	1	
14	2810-71250	• GROMMET	1	
15	8488152010	SCREW	2	M5x20
16	2670-71510	CORD	1	
17	2880-71600	SWITCH ASSY	1	
18	2810-71610	• SWITCH	1	
19	2670-71621	• SWITCH COVER	1	
20	2880-71630	• PLATE	1	
21	2670-14130	SCREW	1	M5x10
22	3699-90512	SPARK PLUG	1	NGK BPM8Y
23	2810-21270	PLATE	1	
24	0260-30410	SCREW	2	M4x10
25	2881-75000	STARTER ASSY	1	
26	2810-75110	• RECOIL CASE COMP.	1	
27	2810-75120	• GUIDE	1	
28	2810-75150	• BOSS	1	
29	2670-75212	• REEL	1	
30	3317-75300	• SPRING COMP.	1	
31	2670-75411	• ROPE	1	
32	T2041-75420	• KNOB	1	
33	T2041-75431	• COLLAR	2	
34	2881-75440	• SPRING B	1	
35	1400-86280	• WASHER	1	
36	8488152010	• SCREW	1	
37	2880-75600	FAN COVER COMP.	1	
38	2880-75620	• SHEET	1	
39	578 46 83-01	SCREW	4	
40	585 25 51-01	LABEL, RECOIL	1	
41	2881-98611	SNOW PROTECTOR	1	OPTION

Fig.3 HANDLE



## HANDLE

6

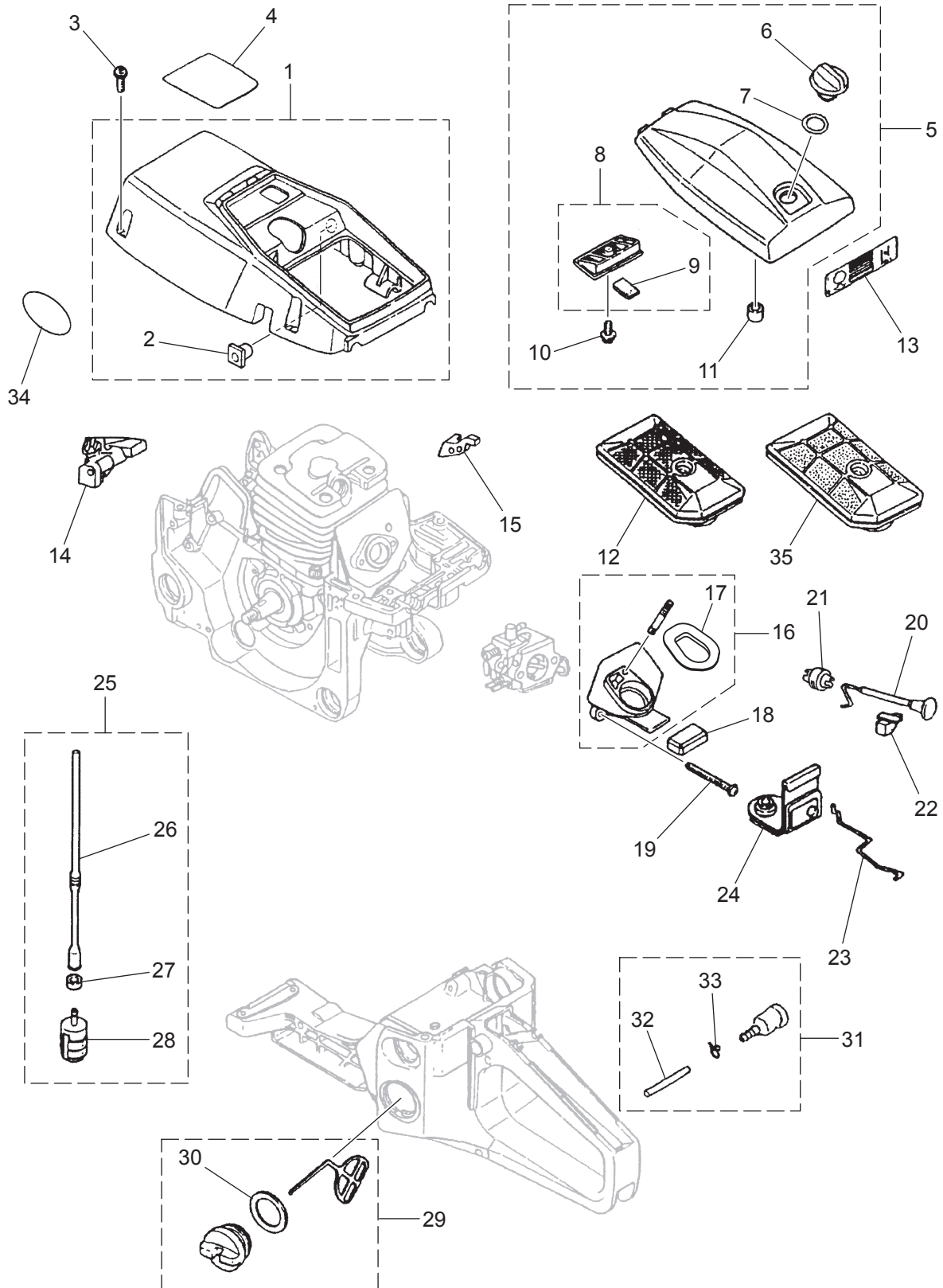
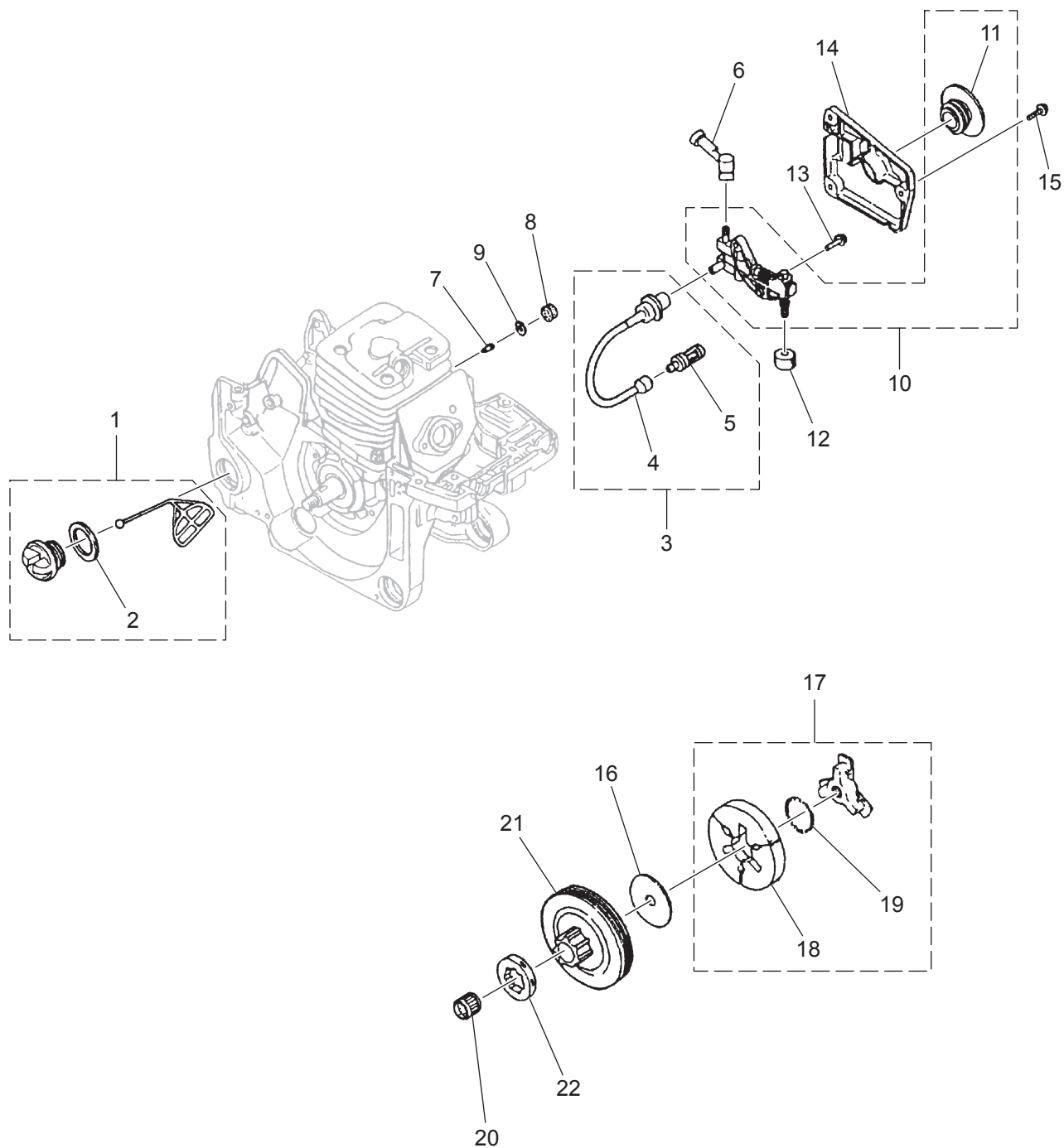
**Fig.4 FUELING SYSTEMS**



Fig. 4 G5201P

## FUELING SYSTEMS

Key#	PART NUMBER	DESCRIPTION	Q'TY	REMARKS
1	588 80 08-01	CYLINDER COVER, COMP	1	M5x14
2	2880-31120	• NUT	1	
3	578 46 83-01	SCREW T27	5	
4	585 26 22-01	LABEL	1	
5	588 80 06-01	CLEANER COVER COMP.	1	
6	3356-83322	• KNOB	1	
7	3388-83340	• GASKET CAP	1	
8	2810-83500	• AIR CLEANER COMP.	1	
9	2810-83520	• • SEAL	1	
10	1600-33130	• SCREW	1	
11	2810-83410	• GROMMET AIR CLEANER	1	
12	2810-83101	AIR CLEANER COMP.	1	
13	2813-31210	LABEL	1	
14	2880-82310	GUIDE ( I )	1	
15	2880-82350	GUIDE (HL)	1	
16	588 80 00-01	MANIFOLD COMP.	1	M5x52
17	588 80 01-01	• SEAL	1	
18	2810-82141	SUPPORTER	1	
19	2880-82210	SCREW	2	
20	2880-82410	CHOKE ROD	1	
21	848C8082G0	GROMMET, CHOKE	1	
22	2670-82430	GUIDE	1	
23	2880-82511	THROTTLE ROD	1	
24	2810-82520	GROMMET, THROTTLE	1	
25	848C808539	FUEL PIPE ASSY	1	
26	848C808591	• FUEL PIPE	1	
27	2850-34350	• COLLAR	1	
28	3302-85400	• FILTER ASSY	1	
29	2670-34401	TANK CAP ASSY	1	
30	2670-34430	• GASKET TANK CAP	1	
31	2670-34500	BREATHER ASSY	1	OPTION (Felt)
32	3350-34540	• PIPE	1	
33	1260-85460	• CLIP	1	
34	T2041-75810	LABEL eSTART	1	
35	2811-98501	AIR CLEANER COMP.	1	

**Fig.5 OIL SYSTEM, CLUTCH**



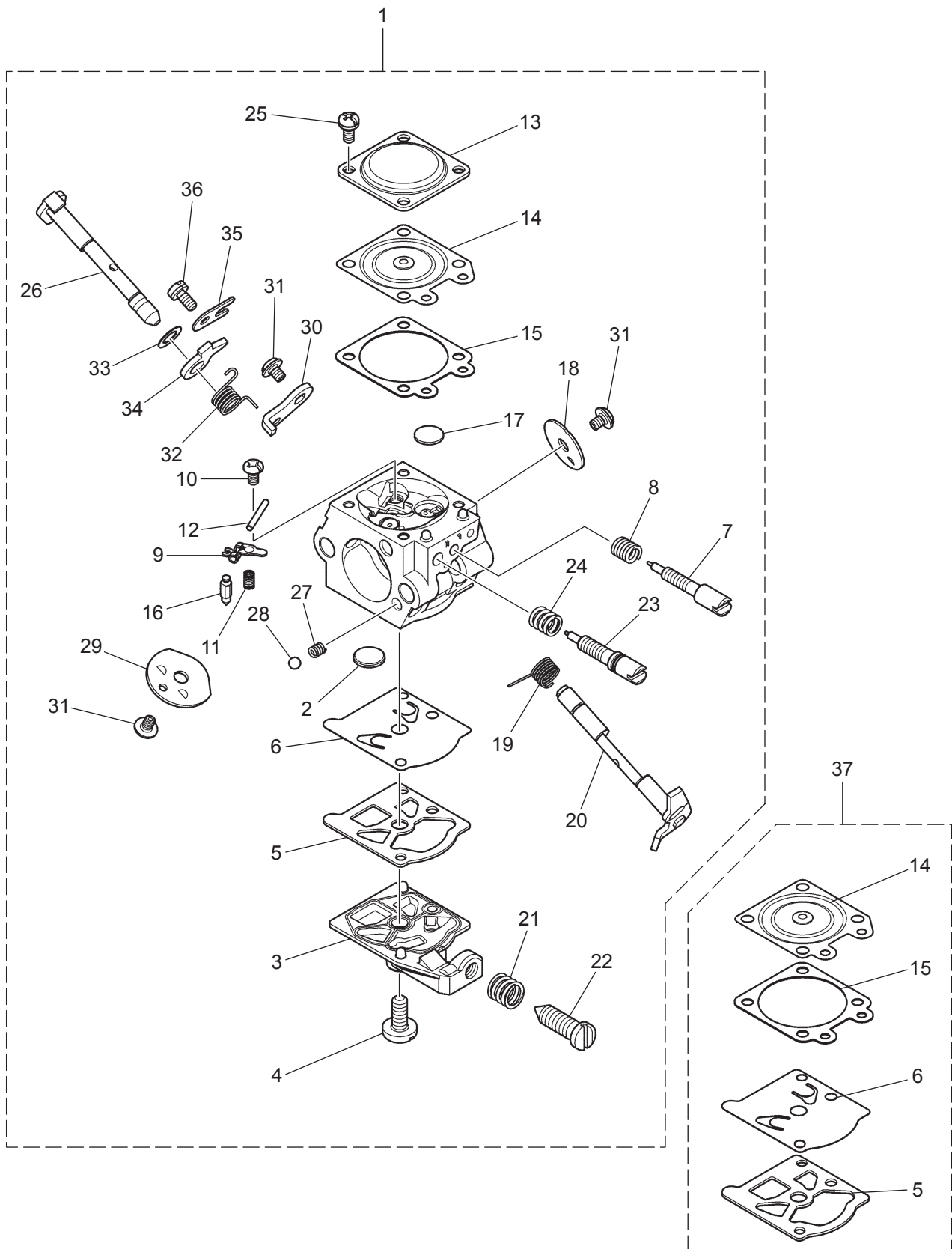
**Fig.6 CARBURETOR**

Fig. 6 G5201P

## CARBURETOR

Key#	PART NUMBER	DESCRIPTION	Q'TY	REMARKS
1	578 45 88-01	CARBURETOR ASSY	1	WT1036
2	3306-81380	• SCREEN	1	
3	2810-81120	• PUMP COVER	1	
4	3310-81130	• SCREW	1	
5	3304-81140	• GASKET PUMP	1	
6	1172-81150	• DIAPHRAGM PUMP	1	
7	2810-81170	• L NEEDLE	1	
8	1491-81160	• L NEEDLE SPRING	1	
9	3310-81230	• LEVER	1	
10	3310-81240	• SCREW M LEVER PIN	1	
11	2841-81270	• SPRING	1	
12	3310-81250	• PIN LEVER	1	
13	3310-81280	• COVER	1	
14	3310-81260	• DIAPHRAGM ASSY	1	
15	3310-81290	• GASKET	1	
16	3356-81310	• VALVE INLET	1	
17	1480-81420	• PLUG	1	
18	3356-81340	• THROTTLE VALVE	1	
19	2670-81410	• THROTTLE SPRING	1	
20	2850-81371	• THROTTLE SHAFT	1	
21	2630-81460	• IDLE SPRING	1	
22	2670-81430	• IDLE SCREW	1	
23	2880-81331	• H NEEDLE	1	
24	3080-81320	• H NEEDLE SPRING	1	
25	3310-81351	• SCREW	4	
26	848C8380E0	• CHOKE SHAFT	1	
27	574 79 34-01	• CHOKE SPRING	1	
28	3350-81220	• BALL	1	
29	579 33 37-01	• CHOKE VALVE	1	
30	848C8381Z0	• THROTTLE LEVER	1	
31	2880-81470	• SCREW VALVE	3	
32	848C0080D0	• SPRING	1	
33	1751-81190	• WASHER	1	
34	848C8089D0	• LEVER	1	
35	579 33 35-01	• CLIP THROTTLE SHAFT	1	
36	3310-81351	• SCREW	1	
37	2810-06021	GASKET KIT	1	

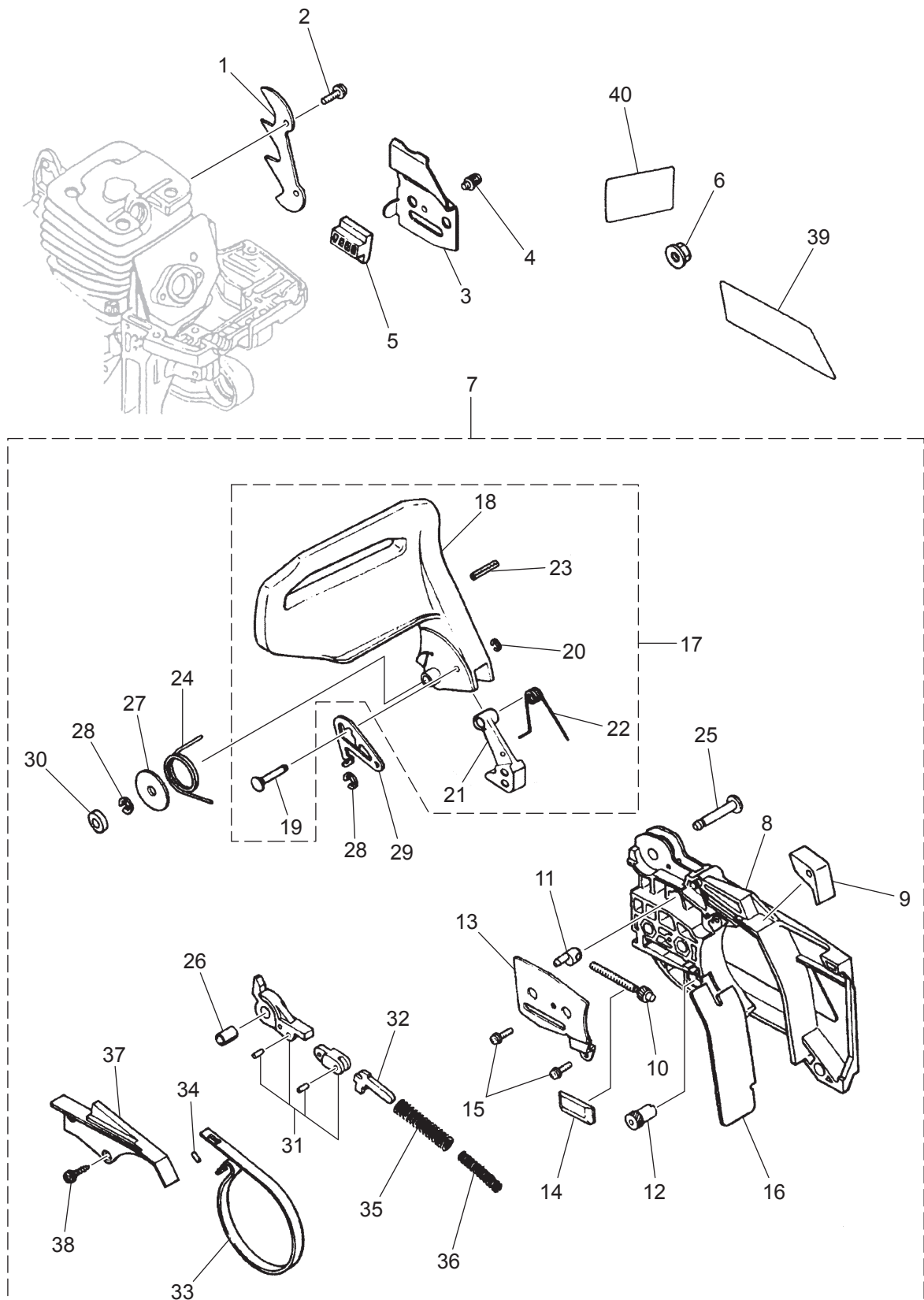
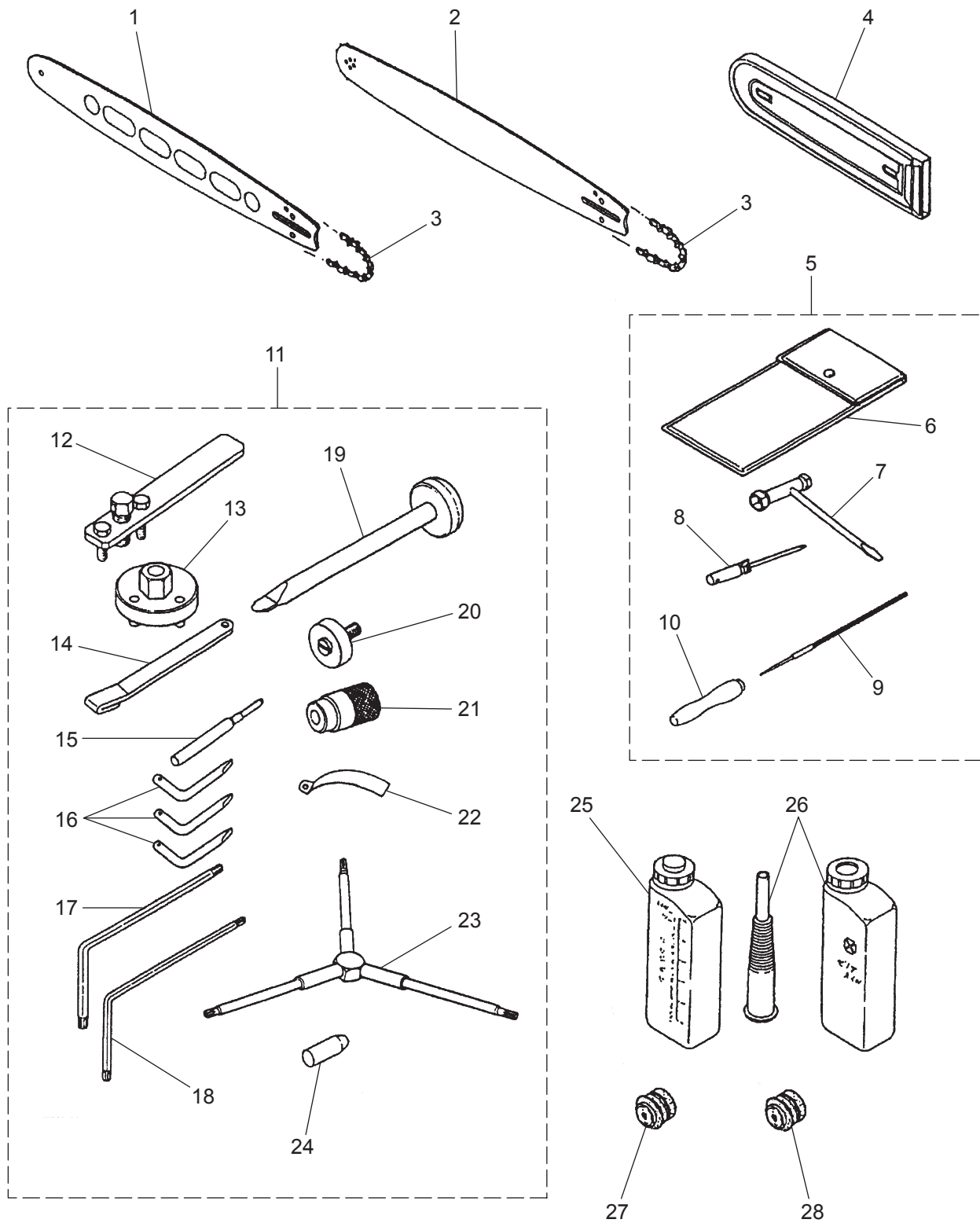
**Fig.7 BREAKING SYSTEMS**

Fig. 7 G5201P

## BREAKING SYSTEMS

Key#	PART NUMBER	DESCRIPTION	Q'TY	REMARKS
1	2670-25310	BUMPER	1	M5x14
2	578 46 83-01	SCREW T27	2	
3	2810-25421	PLATE	1	
4	2670-25430	SCREW	1	
5	2670-25410	GUIDE	1	
6	3350-53410	NUT	2	
7	848C8E5405	CHAIN COVER ASSY	1	
8	848C8053A5	• COVER	1	
9	2880-53150	• STOPPER	1	
10	2671-53210	• SCREW	1	
11	2810-53221	• NUT	1	
12	2671-53230	• GEAR	1	
13	2671-53240	• PLATE	1	
14	2670-25410	• GUIDE	1	
15	2670-54630	• SCREW	2	
16	2671-53311	• PROTECTOR	1	
17	848C8E5413	• GUARD COMP.	1	
18	2880-54112	• • GUARD	1	
19	2670-54121	• • PIN	1	
20	0308-00030	• • RING	1	
21	576 64 74-01	• • WEIGHT	1	
22	848C8E54D1	• • SPRING	1	
23	2880-54150	• • PIN	1	
24	2670-54210	• SPRING	1	
25	2670-54220	• PIN	1	
26	2670-54231	• SPACER	1	
27	3238-15230	• WASHER	1	
28	0308-00040	• RING	2	
29	2810-54240	• PLATE	1	
30	2810-54260	• SPACER	1	
31	2670-54302	• BRAKE LEVER COMP.	1	
32	2670-54411	• ARM	1	
33	2670-54510	• BAND	1	
34	3356-24140	• ROLLER	1	
35	2670-54610	• SPRING	1	
36	2880-54650	• SPRING	1	
37	2670-54621	• COVER	1	
38	2670-54630	• SCREW	3	
39	848C8H90B1	LABEL	1	
40	2874-54990	LABEL, BRAKE	1	





## GUIDE BAR, SAW CHAIN, TOOLS

Key#	PART NUMBER	DESCRIPTION	Q'TY	REMARKS
1	587 01 77-01	HARD NOSE BAR 18"	1	P: .325 G: .058"
2	3646-52114	SPROCKET NOSE BAR 18"	1	G: .058"
3	848CC21B72-50	CHAIN 18"	1	21BPX72E
4	3356-97110	PROTECTOR	1	
5	2811-91001	TOOL SET	1	
6	3345-91110	• BAG	1	
7	3320-91140	• PLUG WRENCH	1	13x19
8	2670-91150	• DRIVER	1	
9	3320-97310	• FILE	1	φ 4.8 (3/16" )
10	3381-91530	• GRIP	1	
11	2670-96002	TOOL SET	1	OPTION
12	2890-96100	• PULLER ASSY (for ROTOR)	1	OPTION
13	2670-96210	• WRENCH (for CLUTCH)	1	OPTION
14	2670-96220	• STOPPER (for PISTON)	1	OPTION
15	3350-96230	• GUIDE (for PISTON)	1	OPTION
16	2670-96240	• WRENCH (for CLUTCH ASSY)	3	OPTION
17	2670-96310	• WRENCH (M5)	1	OPTION
18	2670-96320	• WRENCH (M4)	1	OPTION
19	2670-96510	• GUIDE (for BRAKE SPRING)	1	OPTION
20	3350-96620	• GUIDE	1	OPTION
21	2670-96660	• HOLDER	1	OPTION
22	3350-96240	• GAUGE	1	OPTION
23	578 28 90-01	• WRENCH	1	OPTION
24	2810-96710	• GUIDE (for CRANKSHAFT)	1	OPTION
25	3317-91300	FUEL TANK ASSY	1	OPTION
26	3317-91400	OIL TANK ASSY	1	OPTION
27	2881-98710	FRONT DAMPER (HARD)	3	OPTION
28	2881-98720	REAR DAMPER (HARD)	2	OPTION