



PARTS LIST

BRUSHCUTTERS

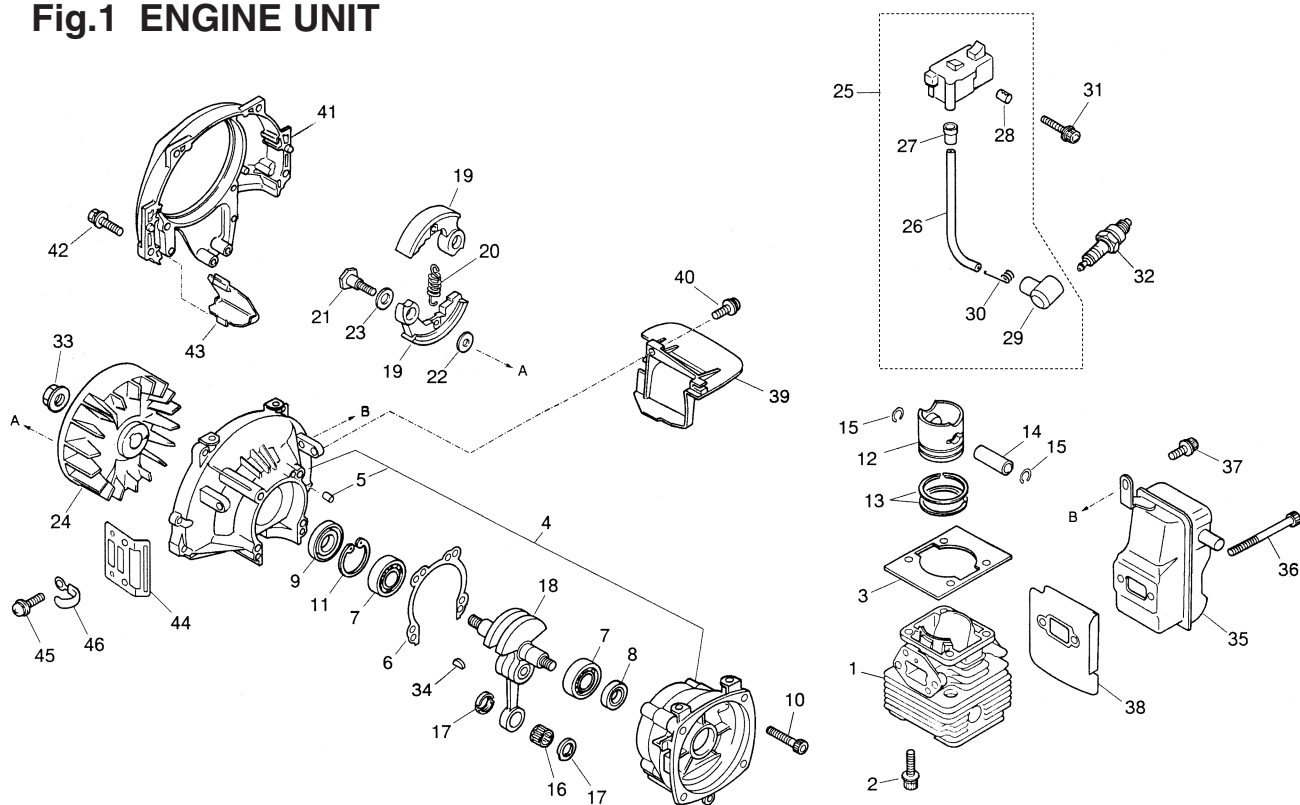
BC3401FW
BC4301FW

NOTE :

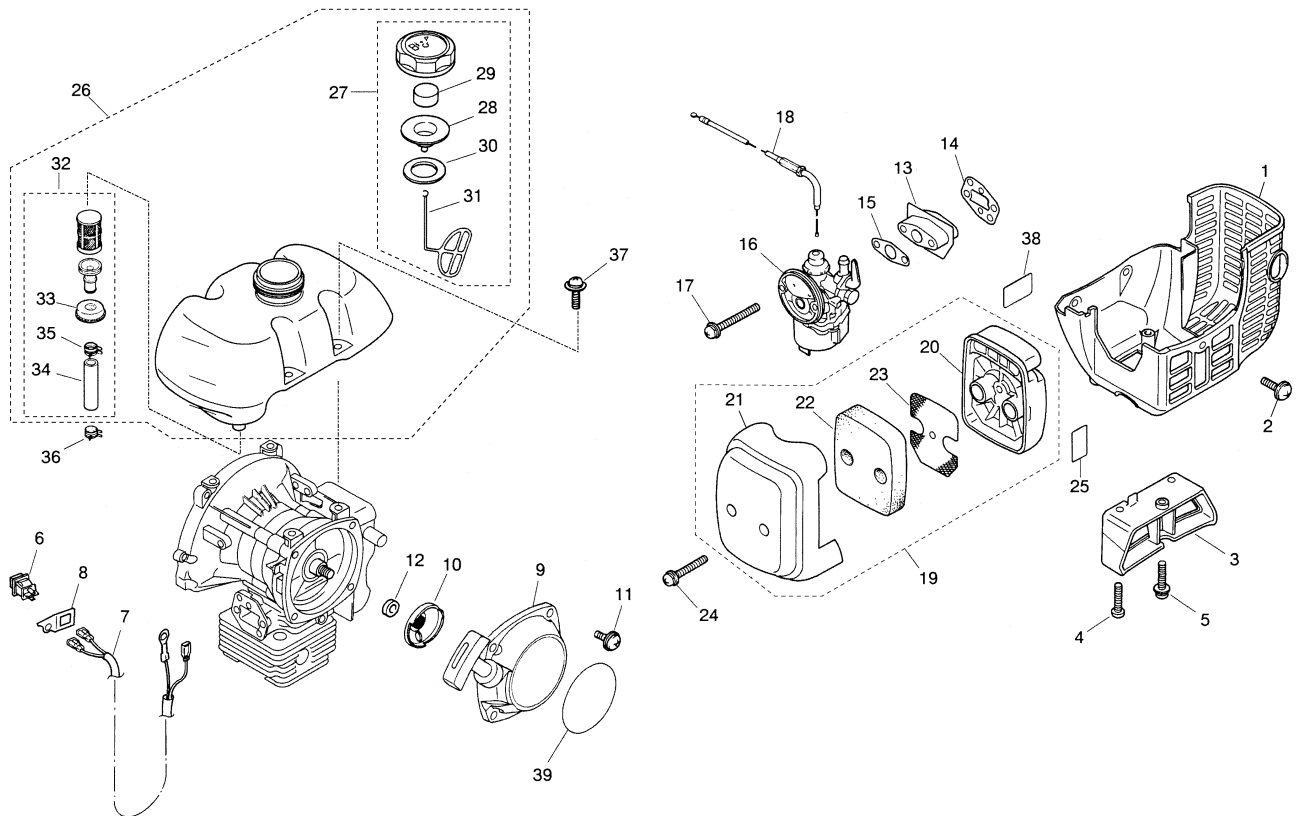
1. Use ZENOAH genuine parts specified in the parts list for repair and/or replacement.
2. ZENOAH does not warrant the machines, those which have been damaged by the use of any parts other than those specified by the company.
3. When placing orders of parts for repair and/or replacement, check if the model name and the serial number are suitable to those specified in the parts list, then use parts number described in the parts list.
4. The contents described in the parts list may change due to improvement.
5. The parts for the machine shall be supplied within ten (10) years after the machine is discontinued. [It is possible that some specific parts may be subject to change of their delivery term and list price within the limit of ten (10) years after the machine is discontinued. And it is also possible that some parts may be available even after the limit of ten (10) years.]

BC3401FW/BC4301FW

Fig.1 ENGINE UNIT



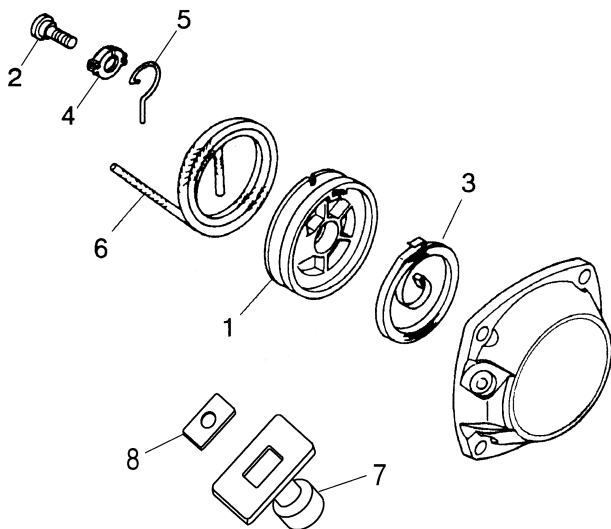
Key#	PART NUMBER	DESCRIPTION	Q'TY /UNIT	NOTE	Key#	PART NUMBER	DESCRIPTION	Q'TY /UNIT	NOTE
1A	T1151-12110	CYLINDER	1	BC3401	23	1200-51241	WASHER	2	
1B	4500-12110	CYLINDER	1	BC4301	24	T1153-71110	ROTOR	1	
2	1850-12130	BOLT	4	M5xL22	25A	T1158-71200	COIL ASS'Y	1	BC3401
3	4500-13120	GASKET, cylinder	1		25B	T1117-71200	COIL ASS'Y	1	BC4301
4	4500-21101	CRANKCASE COMP.	1		26	4570-71220	• CORD	1	
5	2629-21130	• PIN	3		27	2616-71320	• CAP	1	
6	4500-21140	GASKET CASE	1		28	T1153-71250	• PIN	2	
7	06030-06201	BEARING	2		29	5500-72110	• CAP, plug	1	
8	4810-21210	OIL SEAL	1		30	5500-72120	• SPRING	1	
9	1650-21220	OIL SEAL	1		31	3350-14150	BOLT	2	M4xL20
10	01252-30530	BOLT	4	M5xL30	32	3699-90419A	SPARK PLUG	1	RCJ6Y
11	04065-03212	SNAP RING	1		33	1650-43230	NUT	1	M8
12A	4700-41110	PISTON	1	BC3401	34	1000-43240	KEY	1	
12B	4500-41110	PISTON	1	BC4301	35A	4770-15110	MUFFLER	1	BC3401
13A	8488C36300	RING	2	BC3401	35B	4570-15110	MUFFLER	1	BC4301
13B	8488C40300	RING	2	BC4301	36A	01252-30565	BOLT	2	BC3401
14A	8488BA3000	PIN	1	BC3401	36B	3310-31720	BOLT	2	BC4301
14B	2850-41310	PIN	1	BC4301	37	3310-31720	BOLT	1	M5xL14
15	1300-41320	RING	2		38	T1048-15210	GASKET	1	
16	T2100-41410	BEARING	1		39	4570-15220	PLATE	1	
17	2850-41510	WASHER	2		40	0263-90514	SCREW	1	
18	4500-42000	CRANKSHAFT COMP.	1		41	T1117-31111	COVER, fan	1	
19A	1400-51111	SHOE, clutch	2	BC3401	42	3310-12281	BOLT	4	M5xL20
19B	4500-51111	SHOE, clutch	2	BC4301	43	4500-31210	PLATE	1	
20A	1651-51220	SPRING	1	BC3401	44	4500-22110	GUARD	1	
20B	4500-51220	SPRING	1	BC4301	45	0263-90514	SCREW	1	M5xL14
21	1200-51211	SCREW	2		46	8488K40010	CLAMP	1	
22	1200-51230	WASHER	2						

Fig.2 ENGINE UNIT

Key#	PART NUMBER	DESCRIPTION	Q'TY /UNIT	NOTE	Key#	PART NUMBER	DESCRIPTION	Q'TY /UNIT	NOTE
1	4570-32110	COVER	1		25	1133-82060	LABEL	1	
2	4500-32120	SCREW	3	M5xL12	26	848G7G8501	TANK ASS'Y	1	
3	4570-31900	STAND COMP.	1		27	2133-85302	•CAP ASS'Y	1	
4	3356-32210	SCREW	2		28	4570-85230	••CAP INNER	1	
5	0263-90520	SCREW	1	M5xL20	29	1030-85141	••ELEMENT	1	
6	4500-73211	SWITCH	1		30	4500-85220	••PACKING	1	
7	T1117-71240	CORD COMP.	1		31	3317-57242	••STOPPER	1	
8	4570-72260	BRACKET	1		32	1400-85104	•JOINT ASS'Y	1	
9	4500-75100	RECOIL ASS'Y	1		33	1400-85141	••GROMMET	1	
10	4500-75210	PULLEY	1		34	1000-08050	••TUBE	1	L50
11	4500-75511	SCREW	4	M6xL14	35	1410-86130	••CLIP	1	
12	4700-75310	COLLAR	1		36	3073-86130	CLIP	1	
13	848G6014B1	INSULATOR	1		37	1600-86120	SCREW	4	M5xL22
14	848G6014B1	GASKET, insulator	1		38	1970-31151	LABEL	1	
15	4550-13130	GASKET, carburetor	1		39A	T1072-75411	LABEL, recoil	1	BC3401
16A	T1158-81000	CARB ASS'Y (G11P-1R)	1	BC3401	39B	T1117-75412	LABEL, recoil	1	BC4301
16B	T1117-81000	CARB ASS'Y (G12P-1B)	1	BC4301					
17	0263-90565	SCREW	2	M5xL65					
18A	1600-97150	CABLE COMP.	1	BC3401					
18B	1600-83001	CABLE COMP.	1	BC4301					
19	4570-82000	CLEANER ASS'Y	1						
20	1400-82113	•BODY	1						
21	4570-82120	•COVER	1						
22	1418-82130	•ELEMENT	1						
23	1400-82141	•SCREEN	1						
24	4550-82150	SCREW	2	M4xL25					

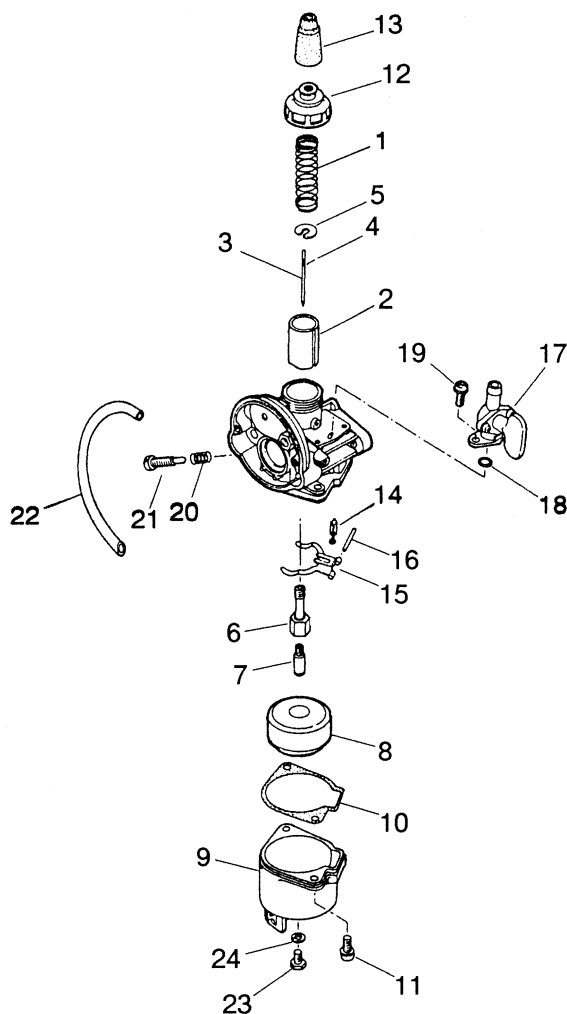
BC3401FW/BC4301FW

Fig.3 RECOIL STARTER



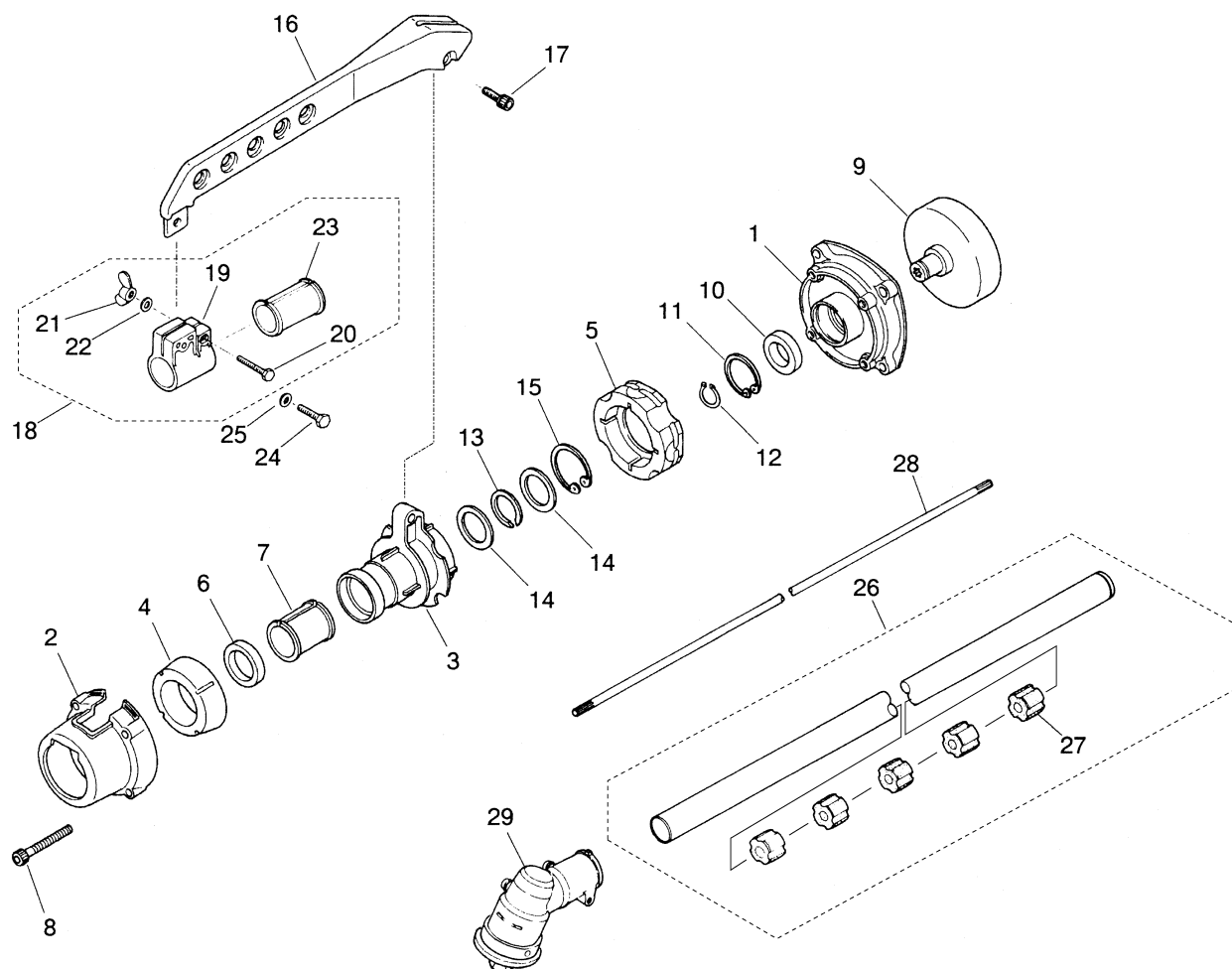
Key#	PART NUMBER	DESCRIPTION	Q'TY /UNIT	NOTE
	4500-75100	RECOIL ASS'Y	1	
1	4500-75120	• REEL	1	
2	4500-75150	• SCREW	1	
3	1850-75130	• SPRING, spiral	1	
4	4500-75180	• COLLAR	1	
5	4500-75190	• SWING ARM	1	
6	4500-75160	• ROPE	1	ø3.5xL880
7	1140-75320	• KNOB	1	
8	5500-75170	• PLATE	1	

Fig.4 CARBURETOR



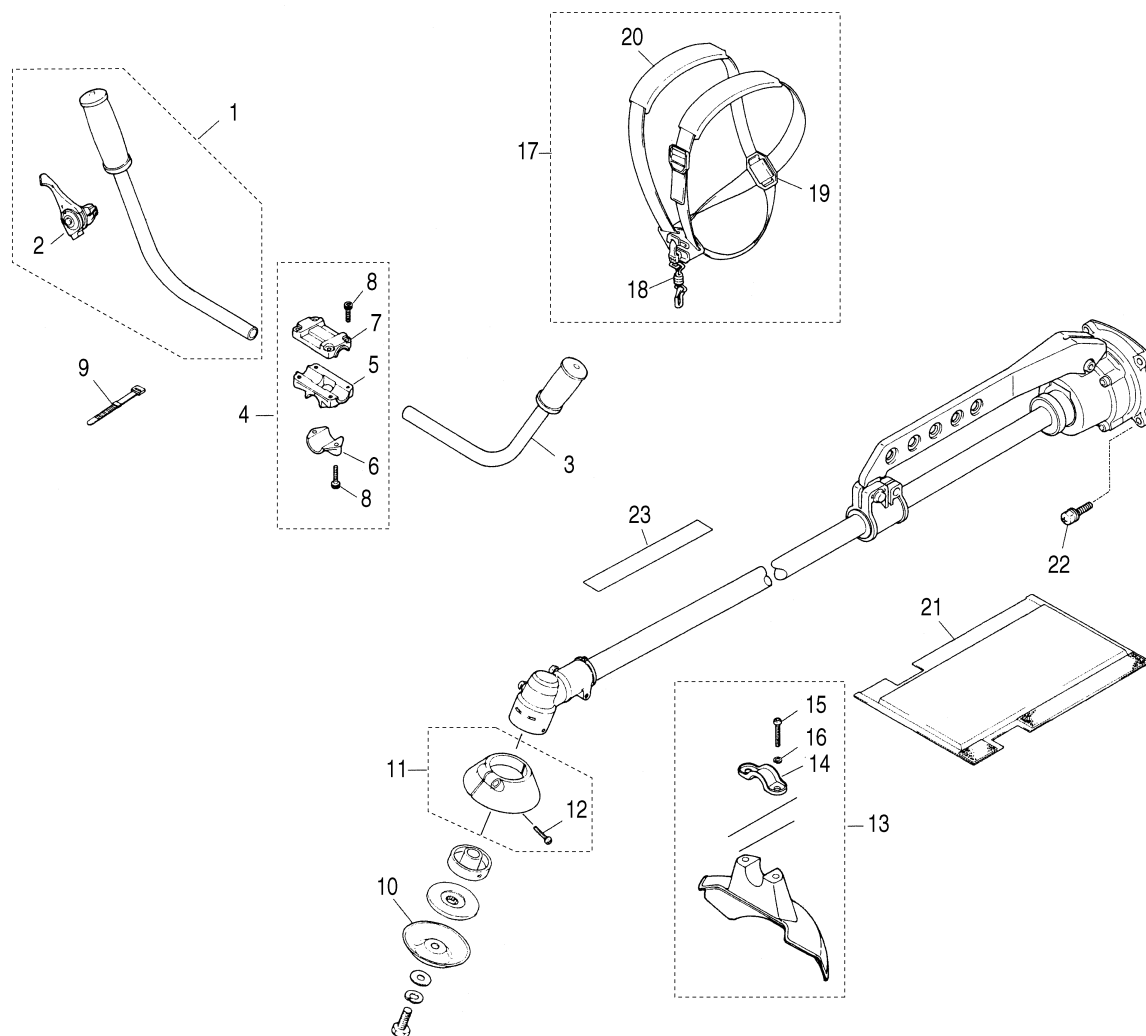
Key#	PART NUMBER	DESCRIPTION	Q'TY /UNIT	NOTE
A	T1158-81000	CARB ASS'Y (G11P-1R)	1	BC3401
B	T1117-81000	CARB ASS'Y (G12P-1B)	1	BC4301
1A	1030-81000-14	• SPRING, throttle	1	BC3401
1B	1335-81060	• SPRING, throttle	1	BC4301
2A	1660-81151	• VALVE, throttle	1	BC3401
2B	4550-81150	• VALVE, throttle	1	BC4301
3A	5993-81210	• NEEDLE, jet	1	BC3401
3B	1614-81210	• NEEDLE, jet	1	BC4301
4	1030-81000-16	• CLIP	1	
5A	1030-81000-17	• RECEIVE, spring	1	BC3401
5B	1335-81070	• RECEIVE, spring	1	BC4301
6	1400-81230	• JET, needle	1	
7A	1620-81240	• JET, main #62	1	BC3401
7B	4550-81240	• JET, main #67	1	BC4301
8	1335-81180	• FLOAT	1	
9	1400-81310	• CHAMBER, float	1	
10	1400-81320	• PACKING, float chamber	1	
11	0260-10412	• SCREW	2	M4xL12

Key#	PART NUMBER	DESCRIPTION	Q'TY /UNIT	NOTE
12	1650-81122	• CAP, body	1	
13	1141-81120	• CAP	1	
14	1650-81361	• VALVE, needle	1	
15	1400-81340	• HINGE	1	
16	1400-81350	• PIN	1	
17	1403-81500	• COCK ASS'Y	1	
18	1400-81540	• O-RING	1	
19	0260-10410	• SCREW	2	M4xL10
20	1650-81260	• SPRING	1	
21A	1650-81251	• SCREW, idle adjust	1	BC3401
21B	2751-81250	• SCREW, idle adjust	1	BC4301
22A	1650-81710	• PIPE	1	BC3401
22B	4550-81710	• PIPE	1	BC4301
23	1400-81650	• SCREW, drain	1	
24	1400-81660	• PACKING	1	

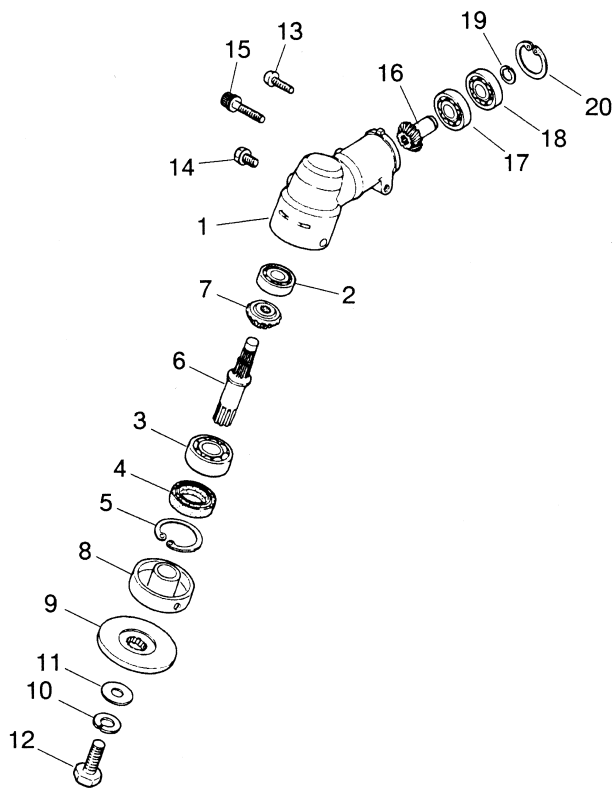
Fig.5 DRIVE SHAFT

Key#	PART NUMBER	DESCRIPTION	Q'TY /UNIT	NOTE	Key#	PART NUMBER	DESCRIPTION	Q'TY /UNIT	NOTE
1	4050-11110	HOUSING	1		22	01642-20608	• WASHER	1	
2	4050-11150	CAP	1		23	3541-11450	• SPACER	1	
3	4000-11210	JOINT	1		24	0224-00625	BOLT	1	M6xL25
4	4050-11250	ABSORBER F	1		25	01642-20608	WASHER	1	
5	4050-11260	ABSORBER R	1		26	848B745820	PIPE COMP.	1	D26xd23x1440
6	3541-11120	DUST SEAL	1		27	3247-11321	• BUSH	5	
7	3541-11450	SPACER	1		28	3540-12212	SHAFT	1	D8x1480 Spline
8	01252-30530	BOLT	4	M5xL30	29	4000-13000	GEARCASE ASS'Y	1	
9	848B8151A1	DRUM	1						
10	06004-06202	BEARING	1						
11	04065-03515	RING	1						
12	04064-01510	RING	1						
13	3263-11410	RING	1						
14	4000-11140	PLATE	2						
15	04065-03715	RING	1						
16	848B7338B1	HANGER	1						
17	1491-21511	BOLT	1	M6xL30					
18	3541-11441	BRACKET COMP.	1						
19	3541-11432	• BRACKET	1						
20	0224-00635	• BOLT	1	M6xL35					
21	3540-11460	• NUT	1						

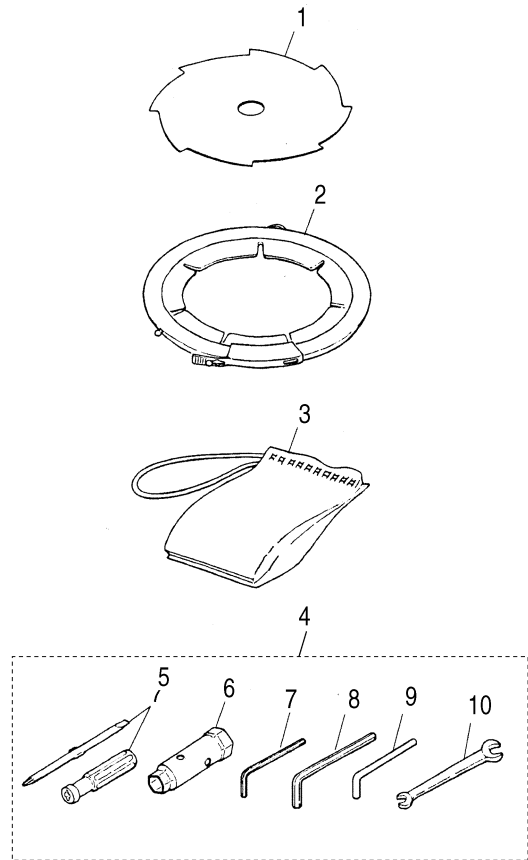
Fig.6 HANDLE·GUARD·HARNESS



Key#	PART NUMBER	DESCRIPTION	Q'TY /UNIT	NOTE	Key#	PART NUMBER	DESCRIPTION	Q'TY /UNIT	NOTE
1	4000-14300	HANDLE,R COMP.	1		20	6565-17200-02	• PROTECTOR	1	
2	3541-14400	• LEVER	1		21	848B8138A1	PROTECTOR	1	
3	4000-14200	HANDLE,L COMP.	1		22	6468-91150	BOLT	4	M6xL20
4	3532-14102	BRACKET ASS'Y	1		23	T3055-12511	PLATE, name	1	
5	3541-14172	• BRACKET	1						
6	3541-14182	• CAP L	1						
7	3257-14192	• CAP U	1						
8	01252-80525	• BOLT	6	M5xL25					
9	3540-93120	BAND	1						
10	3520-13284	COVER	1						
11	3541-13400	COVER ASS'Y	1						
12	0263-30530	• SCREW	1	M5xL30					
13	3541-24001	GUARD ASS'Y	1						
14	3541-24121	• CLAMP	1						
15	3540-24130	• BOLT	2	M6xL30					
16	0290-20615	• WASHER	2						
17	848B873612	HARNESS ASS'Y	1						
18	848B8636T2	• HOOK COMP.	1						
19	6565-17220	• PLATE	1						

Fig.7 GEARCASE

Key#	PART NUMBER	DESCRIPTION	Q'TY /UNIT	NOTE
	4000-13000	GEARCASE ASS'Y	1	
1	3541-13194	• GEARCASE	1	
2	06000-06000	• BEARING	1	
3	06000-06201	• BEARING	1	
4	3180-13141	• SEAL	1	
5	04065-03212	• RING	1	
6	4050-13210	• SHAFT	1	
7	3180-13221	• GEAR	1	
8	3541-13241	• HOLDER A	1	
9	3541-13251	• HOLDER B	1	
10	3310-43210	• WASHER	1	
11	01643-30823	• WASHER	1	
12	3579-33260	• BOLT	1	M8, Left
13	01252-30510	• BOLT	1	M5xL10
14	0224-40610	• BOLT	1	M6xL10
15	3540-13260	• BOLT	1	M6xL35
16	3541-13312	• PINION	1	
17	06000-06000	• BEARING	1	
18	06001-06000	• BEARING	1	
19	04064-01010	• RING	1	
20	04065-02612	• RING	1	

Fig.8 SAW-ACCESSORIES

Key#	PART NUMBER	DESCRIPTION	Q'TY /UNIT	NOTE
1	6298-15344	SAW	1	
2	848JL092B1	COVER	1	
3	3541-91110	BAG	1	
4	3532-91000	TOOLSET	1	
5	1030-91340	• DRIVER	1	
6	3239-91310	• SOCKET	1	
7	09007-00425	• WRENCH	1	for M5
8	09007-00528	• WRENCH	1	for M6
9	3540-91110	• BAR	1	
10	3540-91120	• SPANNER	1	