



PARTS LIST

BRUSHCUTTERS

BK3402FL/ BK3402FL-EZ

BK3402FLJ/ BK3402FLJ-EZ

NOTE:

1. Use HUSQVARNA ZENOAH genuine parts as specified in the parts list for repair and/or replacement.
2. HUSQVARNA ZENOAH does not warrant the machines, which have been damaged by the use of any parts other than those specified by the company.
3. When placing parts orders for repair and/or replacement, check if the model name and the serial number are applicable to those specified in the parts list, then use parts number described in the parts list.
4. The contents described in the parts list are accurate as of the date and may change due to improvement.
5. The parts for the machine shall be supplied ten (10) years after the machine is discontinued. [It is possible that some specific parts may be subject to change of their delivery term and list price within the limit of ten (10) years after the machine is discontinued. It is also possible that some parts may be available even after the limit of ten (10) years.]

| | |
|--------------------------------------|---|
| Fig.1 DRIVE UNIT & ACCESSORIES | 2 |
| Fig.2 DRIVE UNIT & ACCESSORIES | 4 |
| Fig.3 ENGINE UNIT G34L | 6 |
| Fig.4 ENGINE UNIT G34L | 8 |

APPLICABLE SERIAL NUMBERS:

10100101 and up

July 2012

Fig.1 DRIVE UNIT & ACCESSORIES

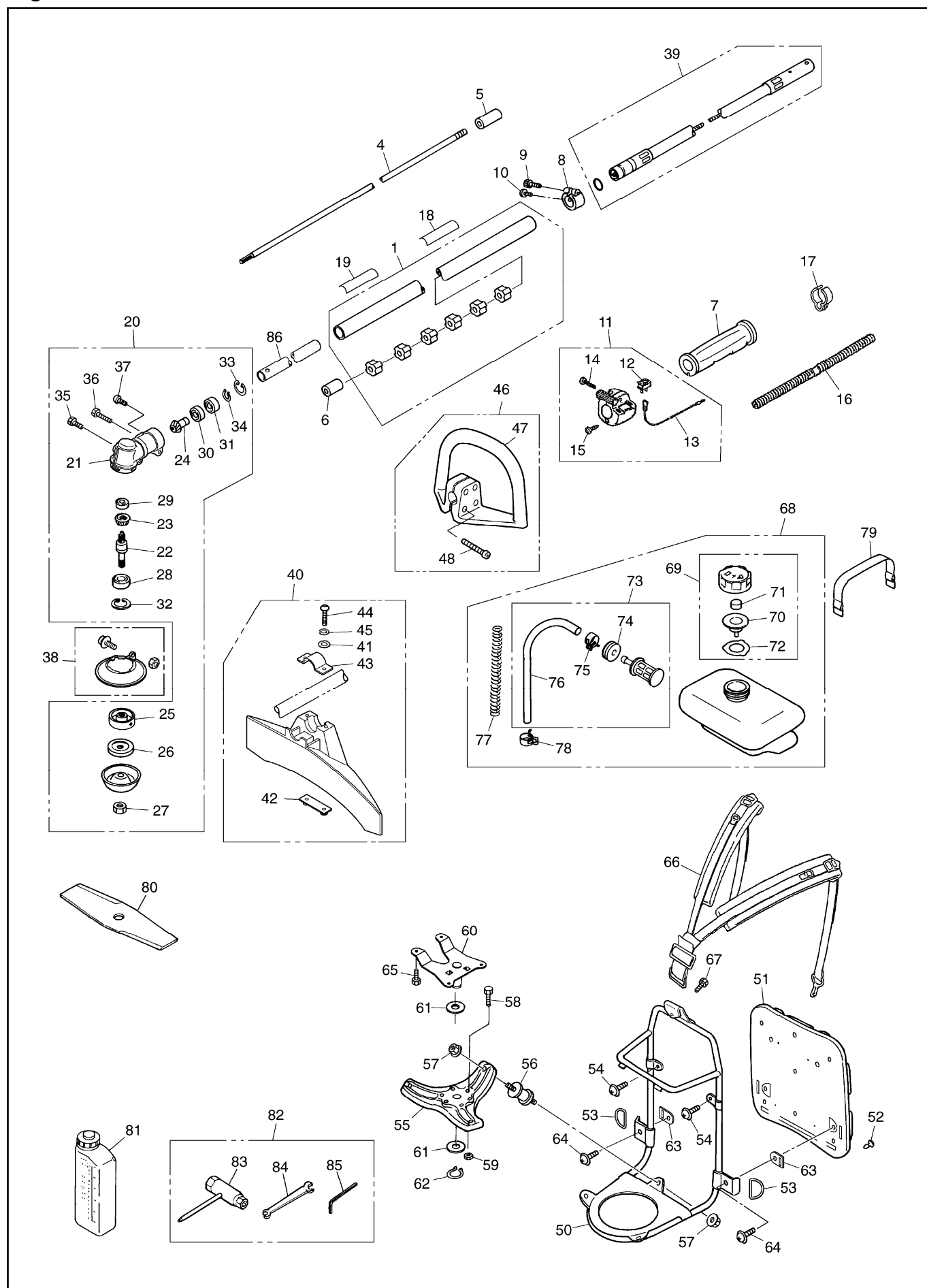


Fig.1 DRIVE UNIT & ACCESSORIES

| Key# | PART NUMBER | DESCRIPTION | Q'ty /UNIT | NOTE | Key# | PART NUMBER | DESCRIPTION | Q'ty /UNIT | NOTE |
|------|--------------|---------------------|---------------|--------------|------|--------------|---------------|---------------|------|
| 1 | K6010-004360 | PIPE COMP. | 1 | | 63 | 848E3A35K0 | PLATE | 2 | |
| | | | 1 | | 64 | 0263-30520 | SCREW | 2 | |
| 4 | K3200-003040 | SHAFT | 1 | | 65 | 3310-31720 | BOLT | 4 | |
| 5 | K3200-000730 | JOINT | 1 | | 66 | T1154-37100 | BAND ASSY | 1 | |
| 6 | 6036-12250 | SPACER | 1 | K1300-000290 | 67 | 01252-30510 | BOLT | 1 | |
| 7 | 3577-32141 | GRIP | 1 | K2300-000990 | 68 | T1055-85000 | TANK ASSY | 1 | |
| 8 | K3100-000550 | CLAMP | 1 | | 69 | 2133-85302 | • CAP ASSY | 1 | |
| 9 | B1176-120520 | BOLT M5x20 | 1 | | 70 | 4570-85230 | •• CAP | 1 | |
| 10 | BB100-001770 | SCREW M5x12 | 1 | | 71 | 1030-85141 | •• ELEMENT | 1 | |
| 11 | 8488R00550 | LEVER-ASSY | 1 | K5300-004960 | 72 | 4500-85220 | •• PACKING | 1 | |
| 12 | T4506-52110 | • SWITCH ASSY | 1 | | 73 | 4551-85101 | • JOINT ASSY | 1 | |
| 13 | 8488M10111 | • CORD COMP. | 2 | | 74 | 1400-85141 | •• GROMMET | 1 | |
| 14 | 0263-60520 | • SCREW | 1 | | 75 | 3063-22510 | •• CLIP | 1 | |
| 15 | 2630-31950 | • SCREW | 2 | | 76 | 4551-86111 | •• PIPE | 1 | |
| 16 | 8488H29801 | TUBE | 1 | K5200-003030 | 77 | 3570-15311 | • SPRING | 1 | |
| 17 | 848BC059L0 | CLAMP | 2 | K5300-004970 | 78 | 3063-22510 | • CLIP | 1 | |
| 18 | 848KF590R0 | PLATE NAME | 1 | K4300-002720 | 79 | 1535-85520 | BAND | 2 | |
| 19 | 8488X10020 | PLATE CAUTION | 1 | K4300-002710 | 80 | 579 64 26-01 | 2-TEETH BLADE | 1 | |
| 20 | K6010-008110 | GEARCASE ASSY | 1 | φ 24 | 81 | 1000-91301 | TANK ASSY | 1 | |
| 21 | K3100-001630 | • GEARCASE | 1 | | 82 | 8488U00190 | TOOL-SET | 1 | |
| 22 | K3200-007170 | • SHAFT SPLINE | 1 | | 83 | 1030-91340 | • DRIVER | 1 | |
| 23 | K3200-005010 | • GEAR | 1 | | 84 | 3144-91160 | • SOCKET | 1 | |
| 24 | K3200-006670 | • PINION | 1 | | 85 | 09007-00425 | • WRENCH | 1 | |
| 25 | K3200-007160 | • HOLDER A | 1 | | 86 | 6440-12130 | SLEEVE | 1 | |
| 26 | K3200-007320 | • HOLDER B | 1 | | | | | | |
| 27 | K3200-000160 | • NUT HOLDING | 1 | | | | | | |
| 28 | B1521-160010 | • BEARING 6001 DDU | 1 | | | | | | |
| 29 | B1521-006260 | • BEARING 626 OP | 1 | | | | | | |
| 30 | B1521-406090 | • BEARING 609 Z | 1 | | | | | | |
| 31 | B1521-006090 | • BEARING 609 OP | 1 | | | | | | |
| 32 | B2804-112812 | • RING STOP 28 HOLE | 1 | | | | | | |
| 33 | B2804-224120 | • RING STOP 24 HOLE | 1 | | | | | | |
| 34 | B2804-100910 | • RING STOP 9 HOLE | 1 | | | | | | |
| 35 | B1180-010608 | • BOLT M6x8 | 1 | | | | | | |
| 36 | B1176-220530 | • BOLT M5x30 | 1 | | | | | | |
| 37 | B1111-210514 | • SCREW M5x14 | 1 | | | | | | |
| 38 | K6010-008260 | COVER SET | 1 | | | | | | |
| 39 | K6010-004330 | FLEX SHAFT ASSY | 1 | | | | | | |
| 40 | 575 98 76-01 | GUARD ASSY | 1 | K6010-007930 | | | | | |
| 41 | 01641-20608 | • PLANE WASHER | 2 | | | | | | |
| 42 | K3200-006110 | • NUT | 1 | | | | | | |
| 43 | K3200-005310 | • CLAMP | 1 | | | | | | |
| 44 | 0225-00625 | • BOLT | 2 | | | | | | |
| 45 | 0290-20615 | • SPRING WASHER M6 | 2 | | | | | | |
| 46 | T3339-14000 | HANDLE ASSY | 1 | | | | | | |
| 47 | T3195-14102 | • HANDLE | 1 | | | | | | |
| 48 | 0263-90530 | • SCREW | 4 | | | | | | |
| 50 | T1154-35100 | FRAME COMP. | 1 | | | | | | |
| 51 | T1144-35200 | PAD ASSY | 1 | | | | | | |
| 52 | 5940-14350 | • CLIP | 4 | | | | | | |
| 53 | T1144-35310 | RING | 2 | | | | | | |
| 54 | 0263-30514 | SCREW | 2 | | | | | | |
| 55 | 6129-51201 | PLATE | 1 | | | | | | |
| 56 | 6129-51310 | JOINT | 3 | | | | | | |
| 57 | 1610-13120 | NUT | 6 | | | | | | |
| 58 | 0224-30625 | BOLT | 1 | | | | | | |
| 59 | 0280-10605 | NUT | 1 | | | | | | |
| 60 | 4551-13311 | BRACKET, ENGINE | 1 | | | | | | |
| 61 | 01641-21423 | WASHER | 2 | | | | | | |
| 62 | 04064-01510 | RING | 1 | | | | | | |

Fig.2 DRIVE UNIT & ACCESSORIES

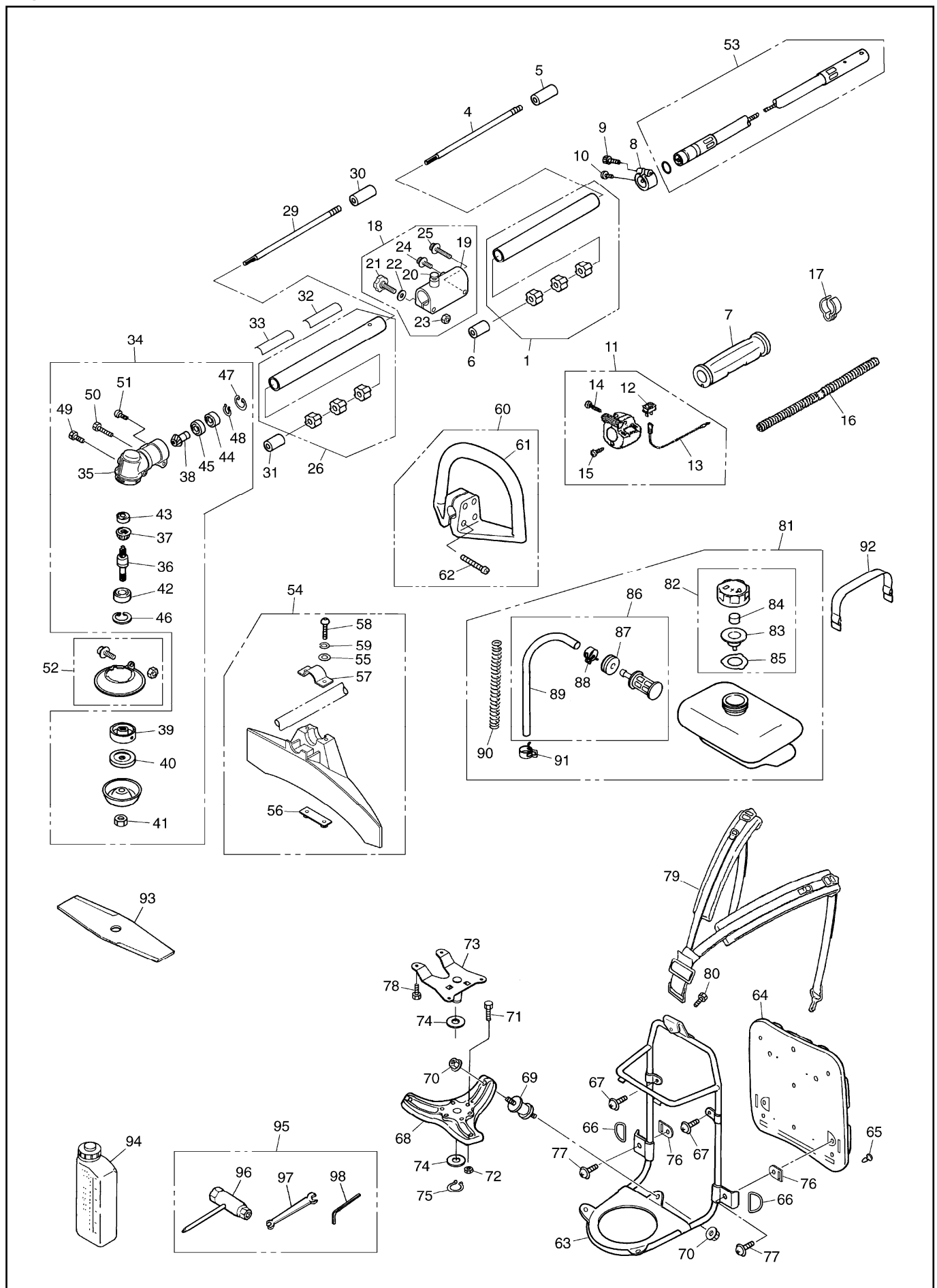


Fig.2 DRIVE UNIT & ACCESSORIES

| Key# | PART NUMBER | DESCRIPTION | Q'ty /UNIT | NOTE | Key# | PART NUMBER | DESCRIPTION | Q'ty /UNIT | NOTE |
|------|--------------|---------------------|------------|--------------|------|--------------|-----------------|------------|------|
| 1 | K6010-004301 | PIPE COMP. | 1 | | 63 | T1154-35100 | FRAME COMP. | 1 | |
| 4 | K3200-000950 | SHAFT | 1 | | 64 | T1144-35200 | PAD ASSY | 1 | |
| 5 | 6129-12220 | JOINT | 1 | K3200-000730 | 65 | 5940-14350 | • CLIP | 4 | |
| 6 | 6036-12250 | SPACER | 1 | K1300-000290 | 66 | T1144-35310 | RING | 2 | |
| 7 | 3577-32141 | GRIP | 1 | K2300-000990 | 67 | 0263-30514 | SCREW | 2 | |
| 8 | K3100-000550 | CLAMP | 1 | | 68 | 6129-51201 | PLATE | 1 | |
| 9 | B1176-120520 | BOLT M5x20 | 1 | | 69 | 6129-51310 | JOINT | 3 | |
| 10 | BB100-001770 | SCREW M5x12 | 1 | | 70 | 1610-13120 | NUT | 6 | |
| 11 | 8488R00550 | LEVER-ASSY | 1 | K5300-004960 | 71 | 0224-30625 | BOLT | 1 | |
| 12 | T4506-52110 | • SWITCH ASSY | 1 | | 72 | 0280-10605 | NUT | 1 | |
| 13 | 8488M10111 | • CORD COMP. | 2 | | 73 | 4551-13311 | BRACKET, ENGINE | 1 | |
| 14 | 0263-60520 | • SCREW | 1 | | 74 | 01641-21423 | WASHER | 2 | |
| 15 | 2630-31950 | • SCREW | 2 | | 75 | 04064-01510 | RING | 1 | |
| 16 | 8488H29801 | TUBE | 1 | K5200-003030 | 76 | 848E3A35K0 | PLATE | 2 | |
| 17 | 848BC059L0 | CLAMP | 2 | K5300-004970 | 77 | 0263-30520 | SCREW | 2 | |
| 18 | K6010-008550 | JOINT ASSY | 1 | | 78 | 3310-31720 | BOLT | 4 | |
| 19 | K3100-000470 | • JOINT | 1 | | 79 | T1154-37100 | BAND ASSY | 1 | |
| 20 | K6010-003210 | • STOPPER COMP. | 1 | | 80 | 01252-30510 | BOLT | 1 | |
| 21 | K5100-002400 | • GRIP BOLT | 1 | | 81 | T1055-85000 | TANK ASSY | 1 | |
| 22 | B1256-110815 | • WASHER 8x9x1.0 | 1 | | 82 | 2133-85302 | • CAP ASSY | 1 | |
| 23 | K5100-002410 | • NUT M8 | 1 | | 83 | 4570-85230 | •• CAP | 1 | |
| 24 | B1111-210514 | • SCREW M5x14 | 1 | | 84 | 1030-85141 | •• ELEMENT | 1 | |
| 25 | B1180-210630 | • BOLT M6x30 | 1 | | 85 | 4500-85220 | •• PACKING | 1 | |
| 26 | K6010-004311 | PIPE COMP. | 1 | | 86 | 4551-85101 | • JOINT ASSY | 1 | |
| 29 | 6036-12210 | SHAFT | 1 | K3200-000950 | 87 | 1400-85141 | •• GROMMET | 1 | |
| 30 | 6036-12241 | JOINT | 1 | K3200-000960 | 88 | 3063-22510 | •• CLIP | 1 | |
| 31 | 6036-12250 | SPACER | 1 | K1300-000290 | 89 | 4551-86111 | •• PIPE | 1 | |
| 32 | 848KDC90R0 | PLATE NAME | 1 | K4300-002730 | 90 | 3570-15311 | • SPRING | 1 | |
| 33 | 8488X10020 | PLATE CAUTION | 1 | K4300-002710 | 91 | 3063-22510 | • CLIP | 1 | |
| 34 | K6010-008110 | GEARCASE ASSY | 1 | φ 24 | 92 | 1535-85520 | BAND | 2 | |
| 35 | K3100-001630 | • GEARCASE | 1 | | 93 | 579 64 26-01 | 2-TEETH BLADE | 1 | |
| 36 | K3200-007170 | • SHAFT SPLINE | 1 | | 94 | 1000-91301 | TANK ASSY | 1 | |
| 37 | K3200-005010 | • GEAR | 1 | | 95 | 8488U00190 | TOOL-SET | 1 | |
| 38 | K3200-006670 | • PINION | 1 | | 96 | 1030-91340 | • DRIVER | 1 | |
| 39 | K3200-007160 | • HOLDER A | 1 | | 97 | 3144-91160 | • SOCKET | 1 | |
| 40 | K3200-007320 | • HOLDER B | 1 | | 98 | 09007-00425 | • WRENCH | 1 | |
| 41 | K3200-000160 | • NUT HOLDING | 1 | | | | | | |
| 42 | B1521-160010 | • BEARING 6001 DDU | 1 | | | | | | |
| 43 | B1521-006260 | • BEARING 626 OP | 1 | | | | | | |
| 44 | B1521-406090 | • BEARING 609 Z | 1 | | | | | | |
| 45 | B1521-006090 | • BEARING 609 OP | 1 | | | | | | |
| 46 | B2804-112812 | • RING STOP 28 HOLE | 1 | | | | | | |
| 47 | B2804-224120 | • RING STOP 24 HOLE | 1 | | | | | | |
| 48 | B2804-100910 | • RING STOP 9 HOLE | 1 | | | | | | |
| 49 | B1180-010608 | • BOLT M6x8 | 1 | | | | | | |
| 50 | B1176-220530 | • BOLT M5x30 | 1 | | | | | | |
| 51 | B1111-210514 | • SCREW M5x14 | 1 | | | | | | |
| 52 | K6010-008260 | COVER SET | 1 | | | | | | |
| 53 | K6010-004330 | FLEX SHAFT ASSY | 1 | | | | | | |
| 54 | 575 98 76-01 | GUARD ASSY | 1 | K6010-007930 | | | | | |
| 55 | 01641-20608 | • PLANE WASHER | 2 | | | | | | |
| 56 | K3200-005290 | • NUT | 1 | | | | | | |
| 57 | K3200-005310 | • CLAMP | 1 | | | | | | |
| 58 | 0225-00625 | • BOLT | 2 | | | | | | |
| 59 | 0290-20615 | • SPRING WASHER M6 | 2 | | | | | | |
| 60 | T3339-14000 | HANDLE ASSY | 1 | | | | | | |
| 61 | T3195-14102 | • HANDLE | 1 | | | | | | |
| 62 | 0263-90530 | • SCREW | 4 | | | | | | |

Fig.3 ENGINE UNIT G34L

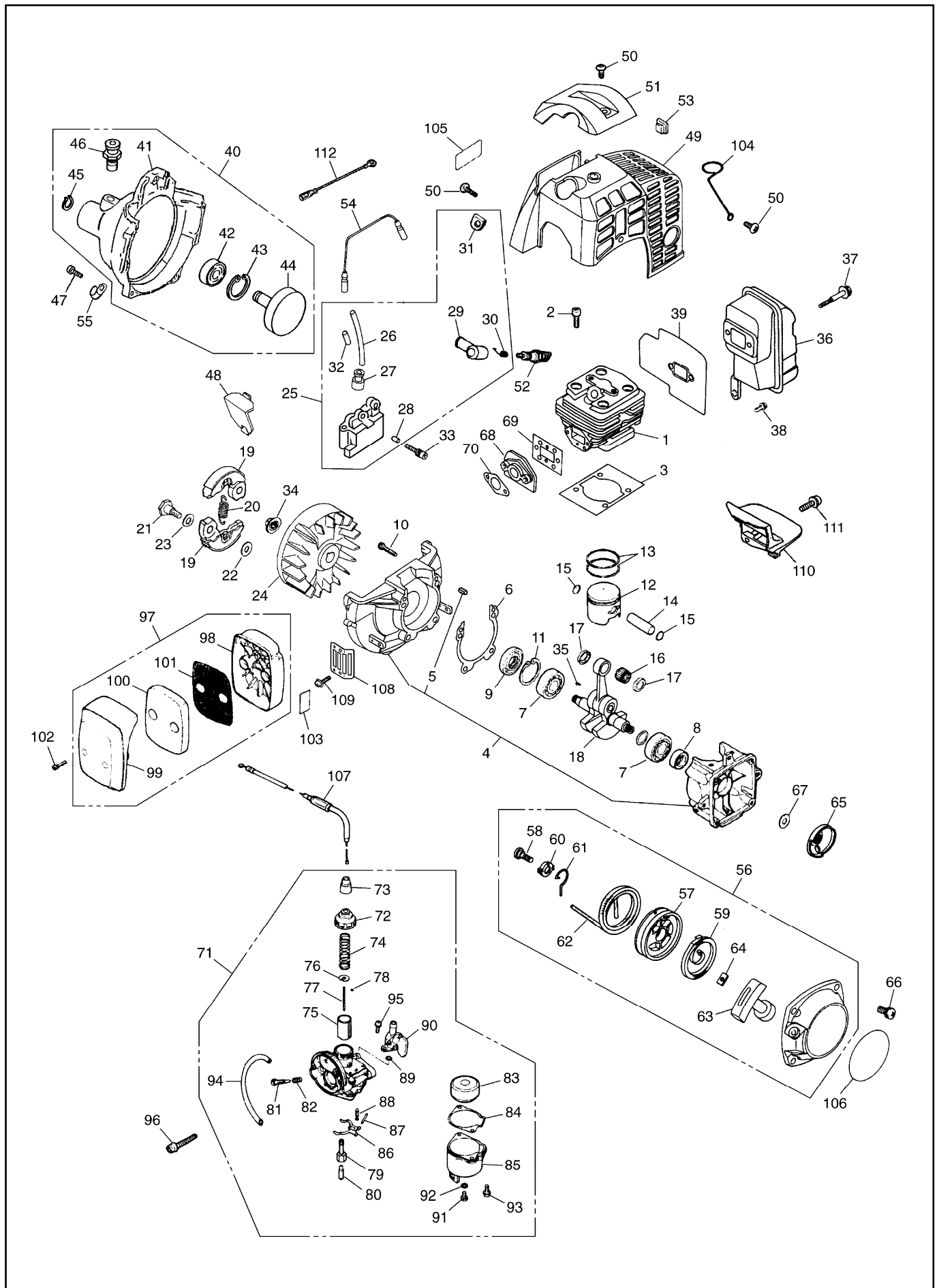


Fig.3 ENGINE UNIT G34L

| Key# | PART NUMBER | DESCRIPTION | Q'ty /UNIT | NOTE | Key# | PART NUMBER | DESCRIPTION | Q'ty /UNIT | NOTE |
|------|--------------|------------------|------------|--------|------|---------------|--------------------|------------|-------------------|
| 1 | T1151-12110 | CYLINDER | 1 | M5x22 | 63 | 1140-75320 | • KNOB | 1 | TK: G11P-1S |
| 2 | 1850-12130 | BOLT | 4 | | 64 | 5500-75170 | • PLATE | 1 | |
| 3 | 4500-13120 | GASKET, CYL | 1 | | 65 | 4500-75210 | PULLEY | 1 | |
| 4 | 4500-21101 | CRANKCASE COMP. | 1 | | 66 | 4500-75511 | SCREW | 4 | |
| 5 | 2629-21130 | • PIN | 3 | M5x30 | 67 | 4700-75310 | COLLAR | 1 | |
| 6 | 4500-21140 | GASKET, CASE | 1 | | 68 | 4550-13160 | INSULATOR | 1 | |
| 7 | 06030-06201 | BEARING | 2 | | 69 | 848G6014B1 | CASKET, INSU | 1 | |
| 8 | 4810-21210 | SEAL | 1 | | 70 | 4550-13130 | GASKET, CARB | 1 | |
| 9 | 1650-21220 | SEAL | 1 | | 71 | T1151-81001 | CARBURETOR ASSY | 1 | |
| 10 | 01252-30530 | BOLT | 4 | | 72 | 1650-81122 | • CAP, BODY | 1 | |
| 11 | 04065-03212 | SNAPRING | 1 | | 73 | 1141-81120 | • CAP | 1 | |
| 12 | 4700-41110 | PISTON | 1 | | 74 | 1030-81000-14 | • SPRING, THROTTLE | 1 | |
| 13 | 8488C36300 | RING, PISTON | 2 | | 75 | T1151-81150 | • VALVE, THROTTLE | 1 | |
| 14 | 8488BA3000 | PIN | 1 | φ 5xL8 | 76 | 1030-81000-17 | • SPRING RECEIVE | 1 | NJ φ 2.097 #59 |
| 15 | 1300-41320 | RING | 2 | | 77 | T1151-81210 | • NEEDLE, JET | 1 | |
| 16 | T2100-41410 | BEARING | 1 | | 78 | 1030-81000-16 | • CLIP | 1 | |
| 17 | 2850-41510 | WASHER | 2 | | 79 | 1400-81230 | • JET, NEEDLE | 1 | |
| 18 | 585 15 30-01 | CRANKSHAFT COMP. | 1 | | 80 | T1151-81240 | • JET, MAIN | 1 | |
| 19 | 1400-51111 | SHOE | 2 | | 81 | 1650-81251 | • SCREW, ADJUST | 1 | |
| 20 | 1651-51220 | SPRING | 1 | | 82 | 1650-81260 | • SPRING, ADJUST | 1 | |
| 21 | 1200-51211 | SCREW | 2 | | 83 | 1335-81180 | • FLOAT | 1 | |
| 22 | 1200-51230 | WASHER | 2 | | 84 | 1400-81320 | • PACKING | 1 | |
| 23 | 1200-51241 | WASHER | 2 | | 85 | 1400-81310 | • CHAMBER | 1 | |
| 24 | T1153-71110 | ROTOR | 1 | M5x60 | 86 | 1400-81340 | • HINGE | 1 | M4x16 M5x60 |
| 25 | T1153-71200 | COIL ASSY | 1 | | 87 | 1400-81350 | • PIN | 1 | |
| 26 | 4500-71220 | • CORD, HIGH | 1 | | 88 | 1650-81361 | • VALVE | 1 | |
| 27 | 2616-71320 | • CAP | 1 | | 89 | 1400-81540 | • RING | 1 | |
| 28 | T1153-71250 | • PIN | 2 | | 90 | 1403-81500 | • COCK | 1 | |
| 29 | 5500-72110 | • CAP | 1 | | 91 | 1337-81340 | • SCREW, DRAIN | 1 | |
| 30 | 5500-72120 | • SPRING | 1 | | 92 | 1038-81000-33 | • PACKING | 1 | |
| 31 | 5500-72130 | • GROMMET | 1 | | 93 | 0263-10410 | • SCREW | 2 | |
| 32 | T1512-71320 | • TUBE | 1 | | 94 | 1650-81710 | • PIPE | 1 | |
| 33 | 3350-14150 | BOLT | 2 | | 95 | 0260-10412 | • SCREW | 2 | |
| 34 | 1650-43230 | NUT | 1 | M5x14 | 96 | 0263-90565 | SCREW | 2 | BK3402FL |
| 35 | 1000-43240 | KEY | 1 | | 97 | 1400-82002 | CLEANER ASSY | 1 | |
| 36 | 848G2N15A1 | MUFFLER | 1 | | 98 | 1400-82113 | • BODY | 1 | |
| 37 | 01252-30560 | BOLT | 2 | | 99 | 1400-82121 | • COVER | 1 | |
| 38 | 3310-31720 | BOLT | 1 | | 100 | 1418-82130 | • ELEMENT | 1 | |
| 39 | 4700-15212 | GASKET, MUFFLER | 1 | | 101 | 1400-82141 | • SCREEN | 1 | |
| 40 | T1153-31101 | HOUSING ASSY | 1 | | 102 | 4550-82150 | SCREW | 2 | |
| 41 | T1153-31111 | • HOUSING | 1 | | 103 | 1133-82060 | LABEL | 1 | |
| 42 | 84888C0280 | • BEARING | 1 | | 104 | 2193-86150 | CLAMP | 1 | |
| 43 | 04065-02812 | • RING | 1 | | 105 | 1970-31151 | LABEL, COVER | 1 | |
| 44 | 576 20 38-01 | • DRUM | 1 | M5x14 | 106 | T1232-75411 | LABEL, RECOIL | 1 | BK3402FL |
| 45 | 04064-01210 | • SNAP RING | 1 | | 107 | 1475-83101 | CABLE COMP. | 1 | |
| 46 | T3087-12600 | • STOPPER COMP. | 1 | | 108 | 4500-22110 | GUARD | 1 | |
| 47 | 3310-12281 | BOLT | 4 | | 109 | 0263-90514 | SCREW | 1 | |
| 48 | 4500-31210 | PLATE, VOLUTE | 1 | | 110 | 4500-15221 | PLATE, MUFFLER | 1 | |
| 49 | 4550-32110 | COVER, CYLINDER | 1 | | 111 | 0263-90514 | SCREW | 1 | |
| 50 | 4500-32120 | SCREW | 4 | | 112 | 8488M10000 | CORD | 1 | |
| 51 | 4500-32210 | GUARD | 1 | | | | | | |
| 52 | 3699-90419A | PLUG RCJ-6Y | 1 | | | | | | |
| 53 | 1852-72121 | GROMMET | 1 | | | | | | |
| 54 | T1153-71240 | CORD | 1 | | | | | | |
| 55 | 8488K40010 | CLAMP | 1 | | | | | | |
| 56 | 4500-75100 | RECOIL ASSY | 1 | | | | | | |
| 57 | 4500-75120 | • REEL | 1 | | | | | | |
| 58 | 4500-75150 | • SCREW | 1 | | | | | | |
| 59 | 1850-75130 | • SPRING | 1 | | | | | | |
| 60 | 4500-75180 | • COLLAR | 1 | | | | | | |
| 61 | 4500-75190 | • ARM | 1 | | | | | | |
| 62 | 4500-75160 | • ROPE | 1 | | | | | | |

Fig.4 ENGINE UNIT G34L

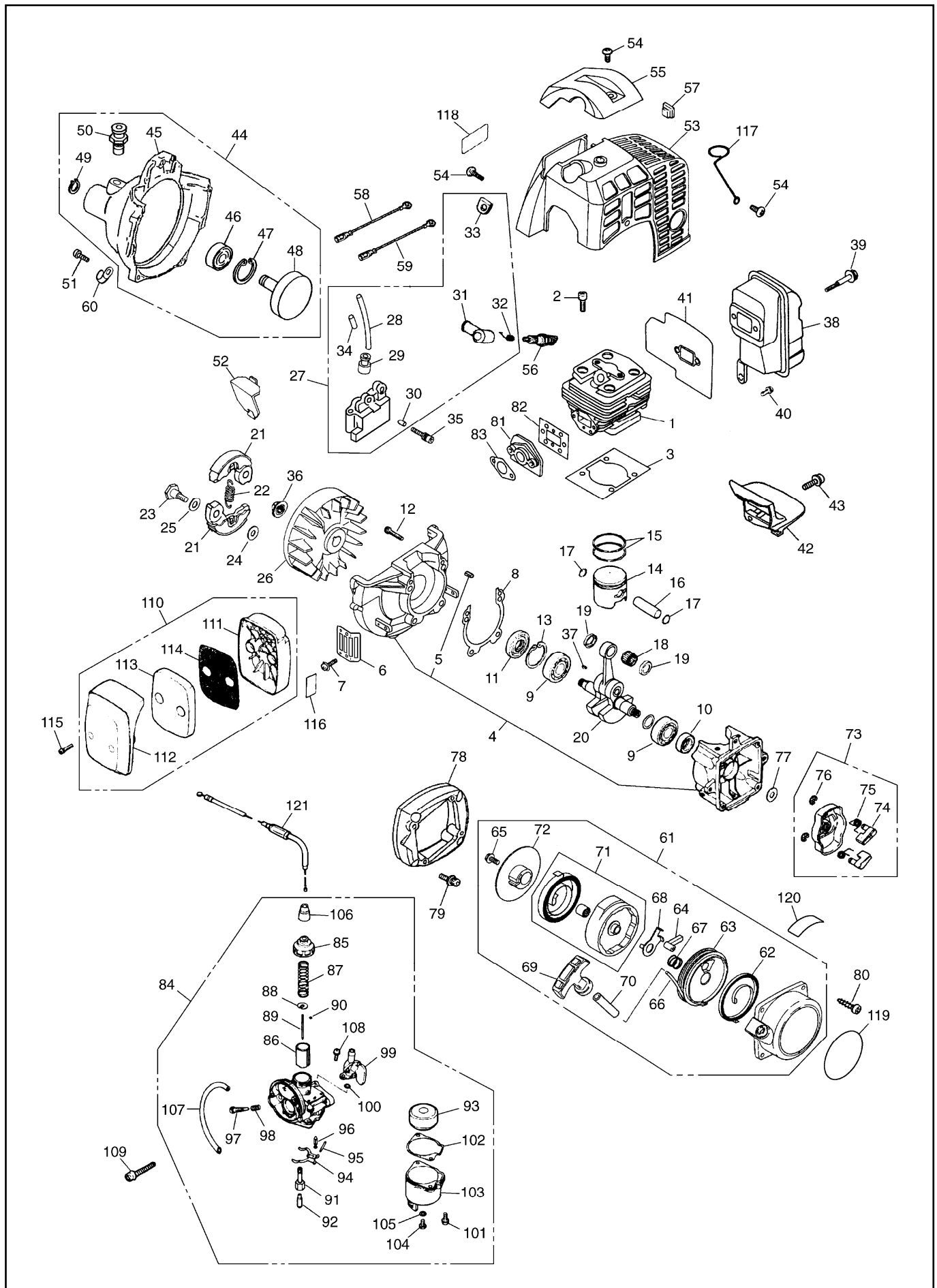


Fig.4 ENGINE UNIT G34L

| Key# | PART NUMBER | DESCRIPTION | Q'ty /UNIT | NOTE | Key# | PART NUMBER | DESCRIPTION | Q'ty /UNIT | NOTE |
|------|--------------|------------------|------------|------|------|---------------|--------------------|------------|------------|
| 1 | T1151-12110 | CYLINDER | 1 | | 63 | T1812-75120 | • REEL | 1 | |
| 2 | 1850-12130 | BOLT | 4 | | 64 | T1812-75140 | • RATCHET | 1 | |
| 3 | 4500-13120 | GASKET | 1 | | 65 | T1812-75150 | • SCREW | 1 | |
| 4 | 4500-21101 | CRANKCASE COMP. | 1 | | 66 | T1207-75160 | • ROPE | 1 | |
| 5 | 2629-21130 | • PIN | 3 | | 67 | T1812-75170 | • SPRING, BREAK | 1 | |
| 6 | 4500-22110 | GUARD | 1 | | 68 | T1812-75181 | • RETAINER | 1 | |
| 7 | 0263-90514 | SCREW | 1 | | 69 | 1490-75181 | • KNOB | 1 | |
| 8 | 4500-21140 | GASKET | 1 | | 70 | T1207-75190 | • PIPE | 1 | |
| 9 | 06030-06201 | BEARING | 2 | | 71 | 848G6L7532 | • HOLDER ASSY | 1 | |
| 10 | 4810-21210 | SEAL | 1 | | 72 | T1812-75630 | • PULLER, RATCHET | 1 | |
| 11 | 1650-21220 | SEAL | 1 | | 73 | T1206-75201 | PULLEY ASSY | 1 | |
| 12 | 01252-30530 | BOLT | 4 | | 74 | T1812-75220 | • RATCHET | 2 | |
| 13 | 04065-03212 | RING | 1 | | 75 | T1812-75231 | • SPRING | 2 | |
| 14 | 4700-41110 | PISTON | 1 | | 76 | T1812-75240 | • RING | 2 | |
| 15 | 8488C36300 | RING, PISTON | 2 | | 77 | 4700-75310 | COLLAR | 1 | |
| 16 | 8488BA3000 | PIN | 1 | | 78 | T1206-75510 | SPACER, EZ | 1 | |
| 17 | 1300-41320 | RING | 2 | | 79 | 3544-11510 | BOLT | 4 | |
| 18 | T2100-41410 | BEARING | 1 | | 80 | 1900-31410 | SCREW | 4 | |
| 19 | 2850-41510 | WASHER | 2 | | 81 | 4550-13160 | INSULATOR | 1 | |
| 20 | 585 15 30-01 | CRANKSHAFT COMP. | 1 | | 82 | 848G6014B1 | GASKET, INSU | 1 | |
| 21 | 1400-51111 | SHOE | 2 | | 83 | 4550-13130 | GASKET | 1 | |
| 22 | 1651-51220 | SPRING | 1 | | 84 | T1151-81001 | CARBURETOR ASSY | 1 | TK:G11P-1S |
| 23 | 1200-51211 | SCREW | 2 | | 85 | 1650-81122 | • CAP | 1 | |
| 24 | 1200-51230 | WASHER | 2 | | 86 | T1151-81150 | • VALVE, THROTTLE | 1 | |
| 25 | 1200-51241 | WASHER | 2 | | 87 | 1030-81000-14 | • SPRING, THROTTLE | 1 | |
| 26 | T1153-71110 | ROTOR | 1 | | 88 | 1030-81000-17 | • SPRING, RECEIVE | 1 | |
| 27 | T1153-71200 | COIL ASSY | 1 | | 89 | T1151-81210 | • NEEDLE | 1 | |
| 28 | 4500-71220 | • CORD, HIGH | 1 | | 90 | 1030-81000-16 | • CLIP | 1 | |
| 29 | 2616-71320 | • CAP | 1 | | 91 | 1400-81230 | • JET | 1 | |
| 30 | T1153-71250 | • PIN | 2 | | 92 | T1151-81240 | • JET | 1 | |
| 31 | 5500-72110 | • CAP | 1 | | 93 | 1335-81180 | • FLOAT | 1 | |
| 32 | 5500-72120 | • SPRING | 1 | | 94 | 1400-81340 | • HINGE | 1 | |
| 33 | 5500-72130 | • GROMMET | 1 | | 95 | 1400-81350 | • PIN | 1 | |
| 34 | T1512-71320 | • TUBE | 1 | | 96 | 1650-81361 | • VALVE, NEEDLE | 1 | |
| 35 | 3350-14150 | BOLT | 2 | | 97 | 1650-81251 | • SCREW, ADJUST | 1 | |
| 36 | 1650-43230 | NUT | 1 | | 98 | 1650-81260 | • SPRING | 1 | |
| 37 | 1000-43240 | KEY | 1 | | 99 | 1403-81500 | • COCK | 1 | |
| 38 | 848G2N15A1 | MUFFLER | 1 | | 100 | 1400-81540 | • RING | 1 | |
| 39 | 01252-30560 | BOLT | 2 | | 101 | 0263-10410 | • SCREW | 2 | |
| 40 | 3310-31720 | BOLT | 1 | | 102 | 1400-81320 | • PACKING | 1 | |
| 41 | 4700-15212 | GASKET | 1 | | 103 | 1400-81310 | • CHAMBER | 1 | |
| 42 | 4500-15221 | PLATE, MUFFLER | 1 | | 104 | 1337-81340 | • SCREW | 1 | |
| 43 | 0263-90514 | SCREW | 1 | | 105 | 1038-81000-33 | • GASKET | 1 | |
| 44 | T1153-31101 | HOUSING ASSY | 1 | | 106 | 1141-81120 | • CAP | 1 | |
| 45 | T1153-31111 | • HOUSING | 1 | | 107 | 1650-81710 | • PIPE | 1 | |
| 46 | 84888C0280 | • BEARING | 1 | | 108 | 0260-10412 | • SCREW | 2 | |
| 47 | 04065-02812 | • RING | 1 | | 109 | 0263-90565 | SCREW | 2 | |
| 48 | 576 20 38-01 | • DRUM | 1 | | 110 | 1400-82002 | CLEANER | 1 | |
| 49 | 04064-01210 | • SNAP RING | 1 | | 111 | 1400-82113 | • BODY | 1 | |
| 50 | T3087-12600 | • STOPPER | 1 | | 112 | 1400-82121 | • COVER | 1 | |
| 51 | 3310-12281 | BOLT | 4 | | 113 | 1418-82130 | • ELEMENT | 1 | |
| 52 | 4500-31210 | PLATE | 1 | | 114 | 1400-82141 | • SCREEN | 1 | |
| 53 | 4550-32110 | COVER | 1 | | 115 | 4550-82150 | SCREW | 2 | |
| 54 | 4500-32120 | SCREW | 4 | | 116 | 1133-82060 | LABEL | 1 | |
| 55 | 4500-32210 | GUARD | 1 | | 117 | 2193-86150 | CLAMP | 1 | |
| 56 | 3699-90419A | SPARKPLUG, RCJ6Y | 1 | | 118 | 1970-31151 | LABEL, COVER | 1 | |
| 57 | 1852-72121 | GROMMET | 1 | | 119 | 848G5D90C0 | LABEL, RECOIL | 1 | |
| 58 | T1153-71240 | CORD | 1 | | 120 | 848G9D90H0 | LABEL, CAUTION | 1 | |
| 59 | 8488M10000 | CORD | 1 | | 121 | 8488P20500 | CABLE | 1 | |
| 60 | 8488K40010 | CLAMP | 1 | | | | | | |
| 61 | 848EEF7514 | RECOIL ASSY | 1 | | | | | | |
| 62 | T1812-75190 | • SPRING, SPIRAL | 1 | | | | | | |