



# PARTS LIST

## BRUSHCUTTERS

**BK4302FL** (BK4302S) / **BK4302FL-EZ** (BK4302R)

**BK4302FLJ** (BK4302U) / **BK4302FLJ-EZ** (BK4302V)

( for KOREA )  
ENGINE MODEL : G43L

**NOTE :**

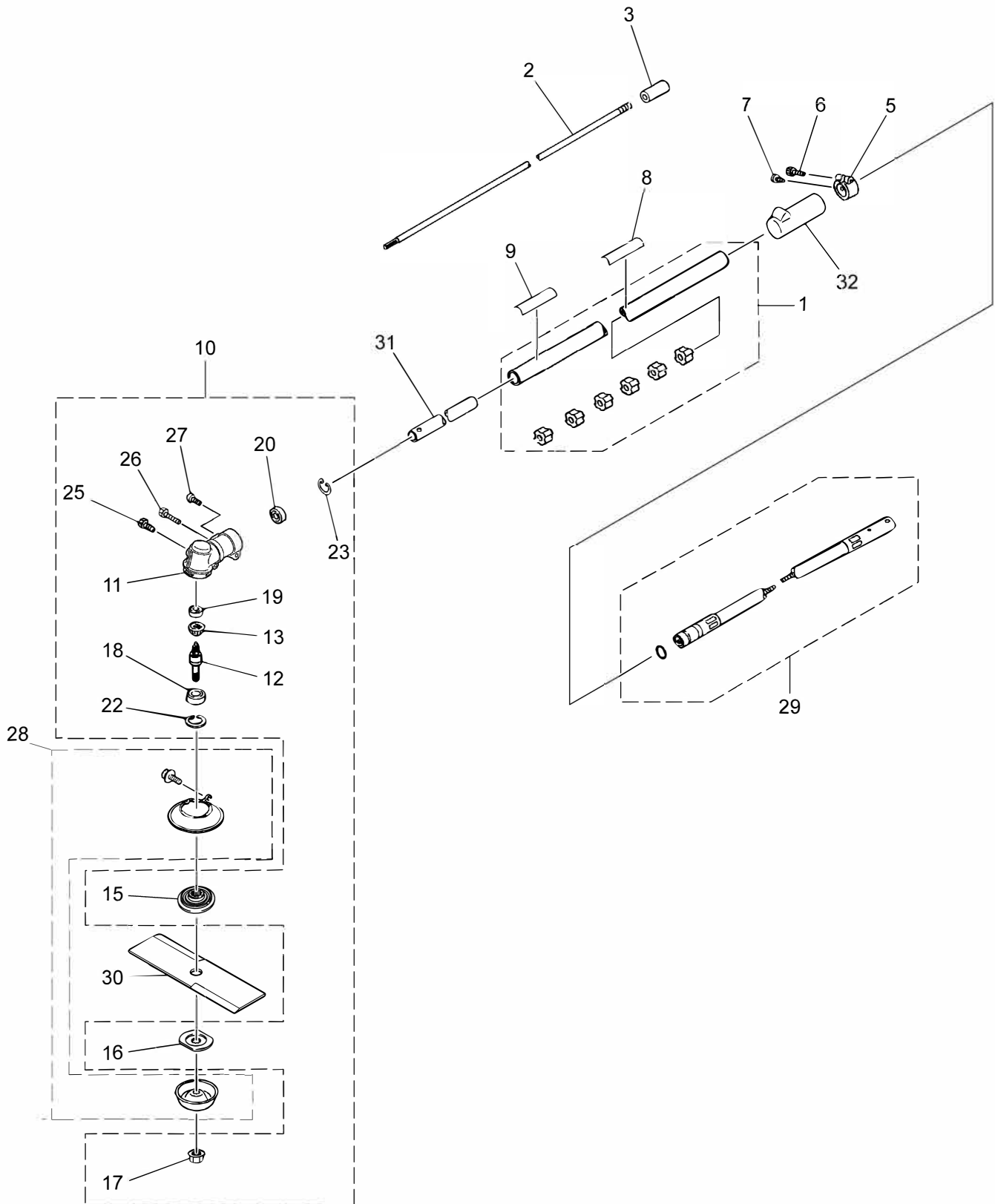
1. Use HUSQVARNA ZENOAH genuine parts as specified in the parts list for repair and/or replacement.
2. HUSQVARNA ZENOAH does not warrant the machines, which have been damaged by the use of any parts other than those specified by the company.
3. When placing parts orders for repair and/or replacement, check if the model name and the serial number are applicable to those specified in the parts list, then use parts number described in the parts list.
4. The contents described in the parts list are accurate as of the date and may change due to improvement.
5. The parts for the machine shall be supplied ten (10) years after the machine is discontinued. [It is possible that some specific parts may be subject to change of their delivery term and list price within the limit of ten (10) years after the machine is discontinued. It is also possible that some parts may be available even after the limit of ten (10) years.]

**APPLICABLE SERIAL NUMBERS:**

ENGINE: 2020 2100001 and up

**Fig.1 DRIVE UNIT & ACCESSORIES**

BK4302FL/ BK4302FL-EZ

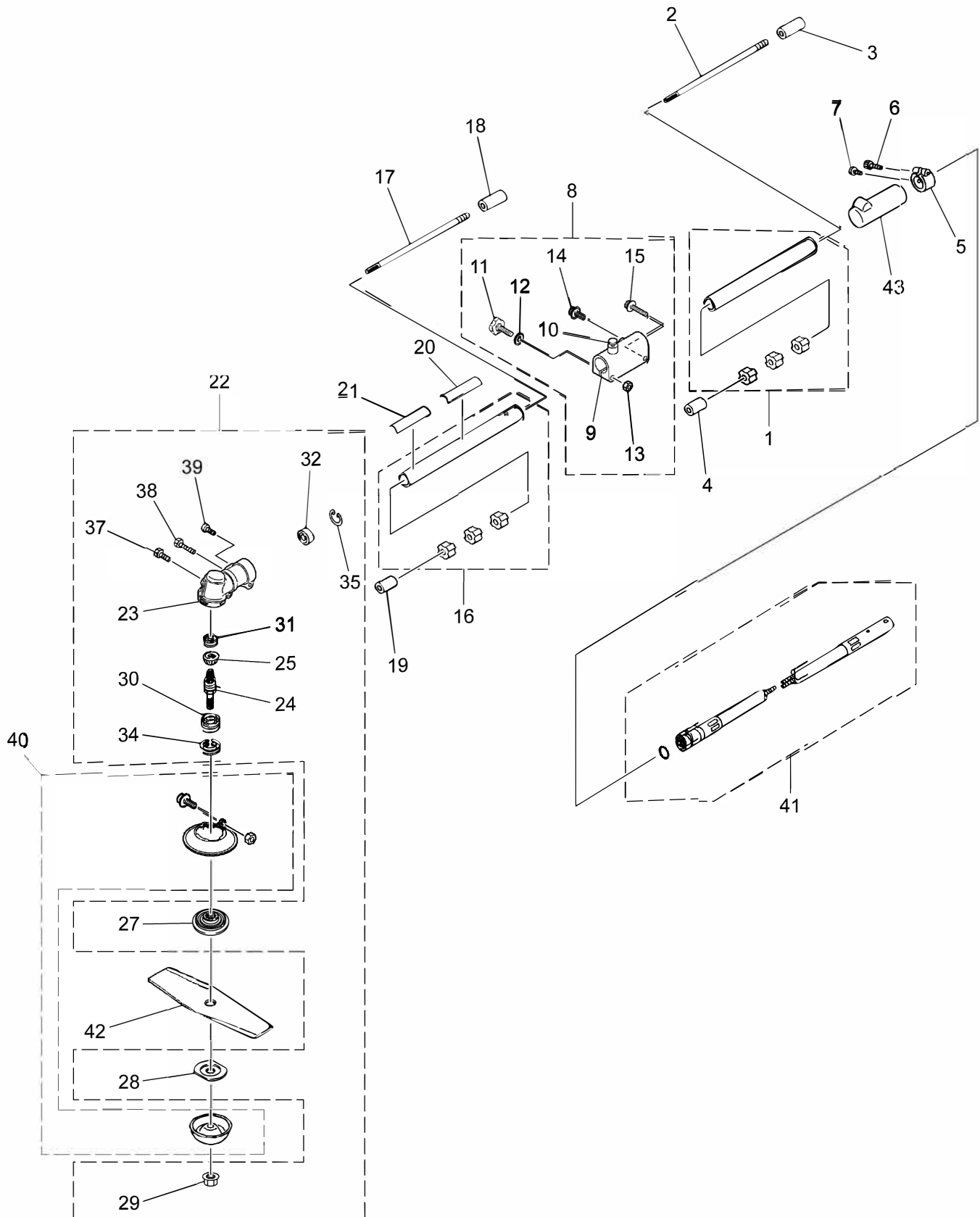


**Fig. 1 BK4302FL/ BK4302FL-EZ DRIVE UNIT & ACCESSORIES**

Key#	PART NUMBER	DESCRIPTION	Q'TY	REMARKS
1	K6010-004361	PIPE COMP.	1	
2	6129-12210	SHAFT	1	
3	6129-12220	JOINT	1	
5	K3100-000550	CLAMP	1	
6	B1176-120520	BOLT	1	M5x20
7	BB100-001770	SCREW	1	M5x12
8	848KF590R0	PLATE NAME	1	
9	8488X10020	PLATE CAUTION	1	K4300-002710
10	K6010-008110	GEARCASE ASSY	1	φ 24
11	K3100-001630	• GEARCASE	1	
12	K3200-007170	• SHAFT SPLINE	1	
13	K3200-005010	• GEAR	1	
15	K3200-007160	• HOLDER A	1	
16	K3200-007320	• HOLDER B	1	
17	BB200-001120	• NUT HOLDING	1	
18	B1521-160010	• BEARING	1	6001 DDU
19	BB500-001090	• BEARING	1	628 OP
20	BB500-001100	• BEARING	1	609 ZZ
22	B2804-112812	• RING STOP	1	28 HOLE
23	B2804-12412	• RING STOP	1	24 HOLE
25	B1180-010608	• BOLT	1	M6x8
26	B1176-220530	• BOLT	1	M5x30
27	B1111-240514	• SCREW	1	M5x14
28	K6010-008260	COVER SET	1	
29	K6010-004330	FLEX SHAFT ASSY	1	
30	579 64 26-01	GRASS KNIFE	1	
31	6440-12130	SLEEVE	1	
32	K1300-006580	COVER	1	

**Fig.2 DRIVE UNIT & ACCESSORIES 02**

BK4302FLJ/ BK4302FLJ-EZ

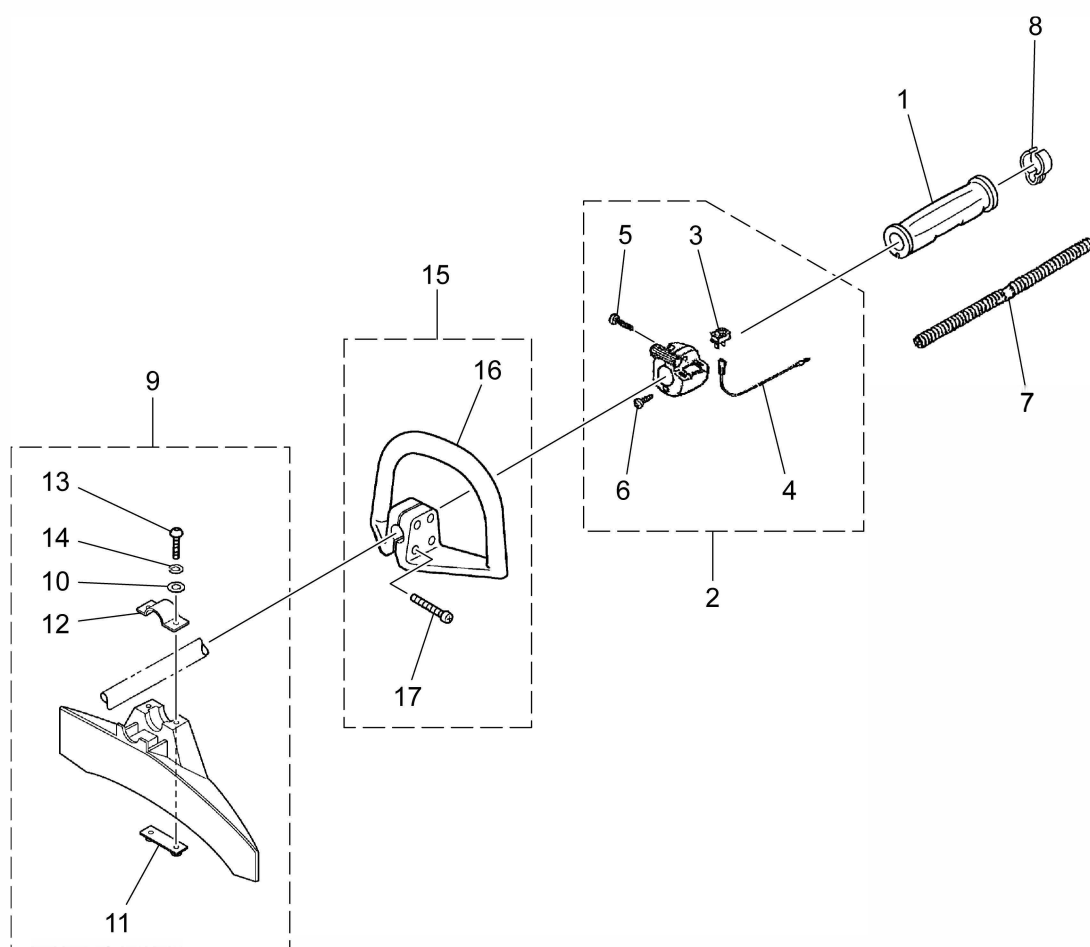


**Fig. 2 BK4302FLJ/ BK4302FLJ-EZ DRIVE UNIT & ACCESSORIES 01**

Key#	PART NUMBER	DESCRIPTION	Q'TY	REMARKS
1	K6010-004302	PIPE COMP.	1	
2	6036-12210	SHAFT	1	K3200-00950
3	6129-12220	JOINT	1	
4	6036-12250	SPACER	1	K1300-000290
5	K3100-000550	CLAMP	1	
6	B1176-120520	BOLT	1	M5x20
7	BB100-001770	SCREW	1	M5x12
8	K6010-008550	JOINT ASSY	1	
9	K3100-000470	▪ JOINT	1	
10	K6010-003210	▪ STOPPER COMP.	1	
11	K5100-002400	▪ GRIP BOLT	1	
12	B1256-110815	▪ WASHER	1	8x9x1.0
13	BB200-001370	▪ NUT	1	M8
14	B1111-210514	▪ SCREW	1	M5x14
15	B1180-240630	▪ BOLT	1	M6x30
16	K6010-004312	PIPE COMP.	1	
17	6036-12210	SHAFT	1	K3200-000950
18	6036-12240	JOINT	1	K3200-000960
19	6440-12130	SPACER	1	K3100-004440
20	848KDC90R0	PLATE NAME	1	K4300-002730
21	8488X10020	PLATE CAUTION	1	K4300-002710
22	K6010-008110	GEARCASE ASSY	1	φ24
23	K3100-001630	▪ GEARCASE	1	
24	K3200-007170	▪ SHAFT SPLINE	1	
25	K3200-005010	▪ GEAR	1	
27	K3200-007160	▪ HOLDER A	1	
28	K3200-007320	▪ HOLDER B	1	
29	BB200-001120	▪ NUT HOLDING	1	
30	B1521-160010	▪ BEARING	1	6001 DDU
31	BB500-001090	▪ BEARING	1	626 OP
32	BB500-001100	▪ BEARING	2	609 ZZ
34	B2804-112812	▪ RING STOP	1	28 HOLE
35	B2804-112412	▪ RING STOP	1	24 HOLE
37	B1180-010608	▪ BOLT	1	M6x8
38	B1176-220530	▪ BOLT	1	M5x30
39	B1111-240514	▪ SCREW	1	M5x14
40	K6010-008260	COVER SET	1	
41	K6010-004330	FLEX SHAFT ASSY	1	
42	579 64 26-01	2-TEETH BLADE	1	
43	K1300-006580	COVER	1	

**Fig.3 HANDLE & GUARD**

**BK4302FL/ BK4302FL-EZ**  
**BK4302FLJ/ BK4302FLJ-EZ**



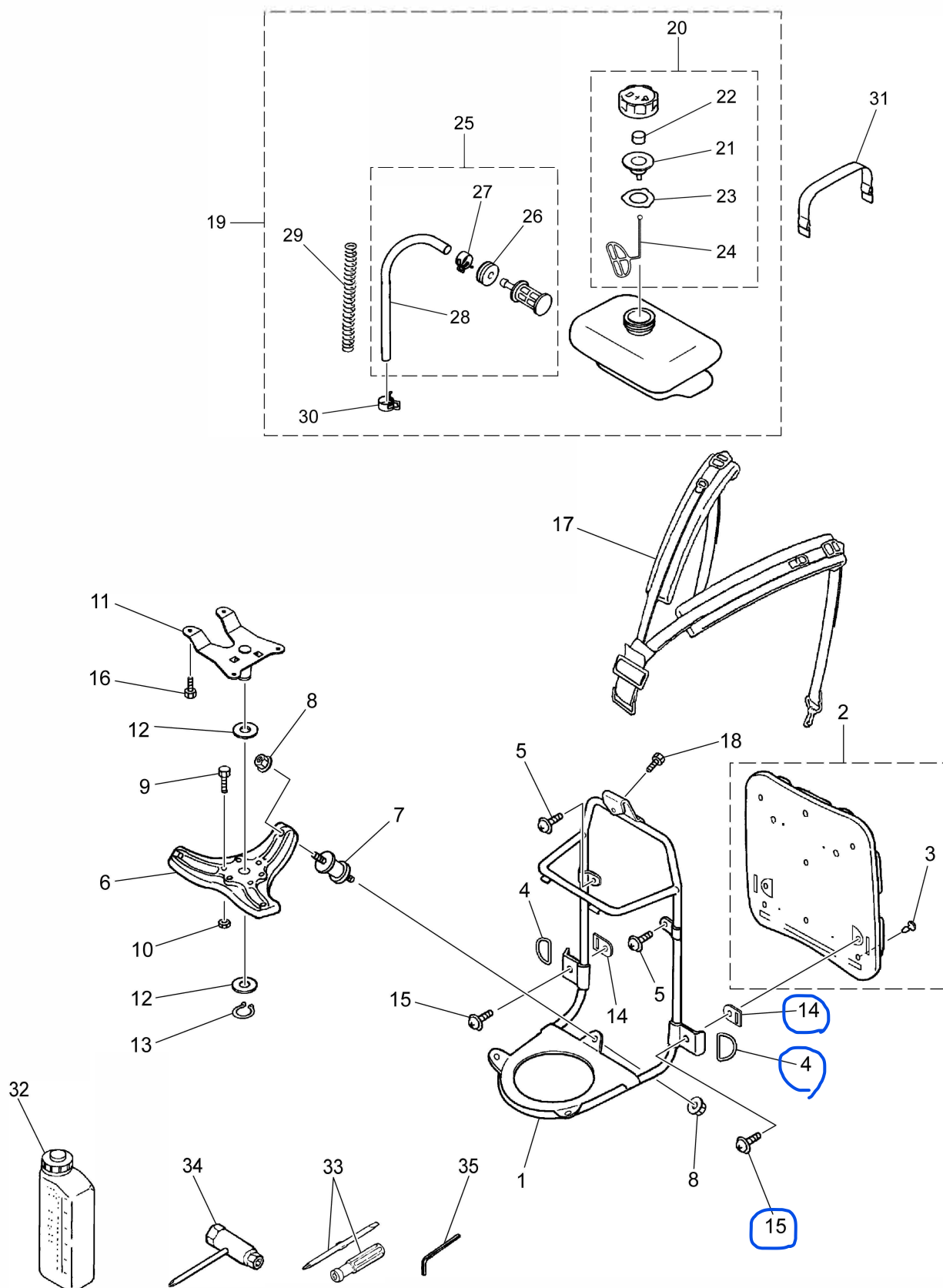
**Fig. 3 BK4302FL/ BK4302FL-EZ  
BK4302FLJ/ BK4302FLJ-EZ**

**HANDLE & GUARD**

Key#	PART NUMBER	DESCRIPTION	Q'TY	REMARKS
1	848J8032H2	GRIP	1	K5300-004960
2	8488R00550	LEVER-ASSY	1	
3	T4506-52110	• SWITCH ASSY	1	
4	8488M10111	• CORD COMP.	2	
5	0263-60520	• SCREW	1	
6	2630-31950	• SCREW	2	K5200-003030
7	8488H29801	TUBE	1	
8	848BC059L0	CLAMP	2	
9	575 98 76-01	GUARD ASSY	1	K6010-007930
10	B1256-100812	• PLANE WASHER	2	
11	K3200-006110	• NUT	1	M6
12	K3200-005310	• CLAMP	1	
13	B1180-000625400	• BOLT	2	
14	B1251-200612	• SPRING WASHER	2	
15	T3339-14000	HANDLE ASSY	1	
16	T3195-14102	• HANDLE	1	
17	0263-90530	• SCREW	4	

**Fig.4 FRAME, FUEL TANK & ACCESSORIES 02**

**BK4302FL/ BK4302FL-EZ**  
**BK4302FLJ/ BK4302FLJ-EZ**



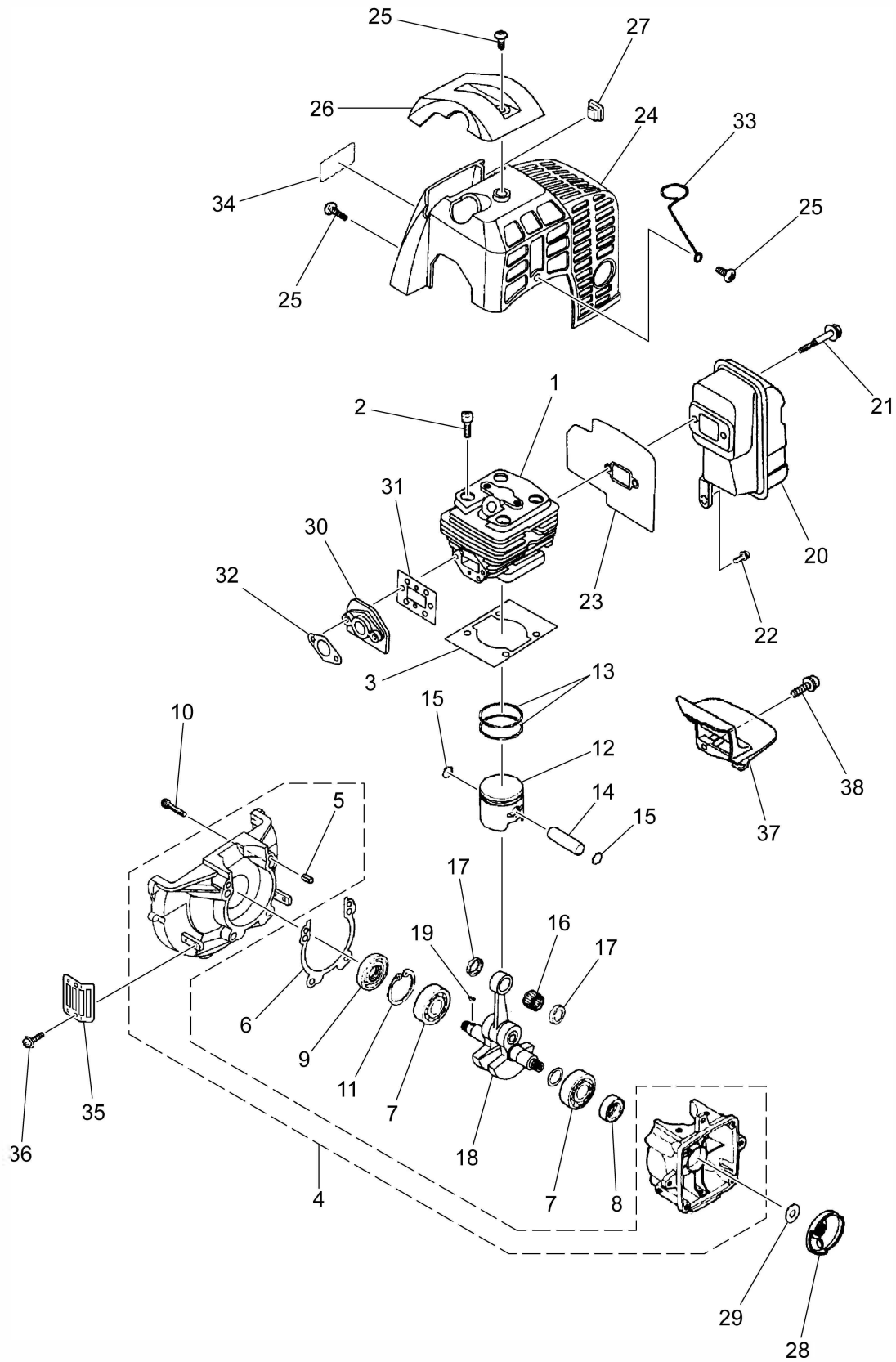


**Fig. 4 BK4302FL/ BK4302FL-EZ FRAME, FUEL TANK & ACCESSORIES 02**  
**BK4302FLJ/ BK4302FLJ-EZ**

Key#	PART NUMBER	DESCRIPTION	Q'TY	REMARKS
1	T1154-35100	FRAME COMP.	1	
2	T1144-35200	PAD ASSY	1	
3	5940-14350	▪ CLIP	4	
4	T1144-35310	RING	2	
5	0263-30514	SCREW	2	
6	T1235-13110	PLATE	1	
7	6129-51310	JOINT	3	
8	1610-13120	NUT	6	
9	0224-30625	BOLT	1	
10	0280-10605	NUT	1	
11	T1235-13310	BRACKET, ENGINE	1	
12	0290-21435	WASHER	1	
13	01583-11408	NUT	1	
14	848E3A35K0	PLATE	2	
15	0263-30520	SCREW	2	
16	3310-31720	BOLT	4	
17	T1154-37100	BAND ASSY	1	
18	01252-30510	BOLT	1	
19	T1055-85000	TANK ASSY	1	
20	2133-85302	▪ CAP ASSY	1	
21	4570-85230	▪ ▪ CAP	1	
22	1030-85141	▪ ▪ ELEMENT	1	
23	4500-85220	▪ ▪ PACKING	1	
24	3317-57242	▪ ▪ STOPPER	1	
25	515 37 15-02	▪ JOINT ASSY	1	
26	598 62 71-01	▪ ▪ GROMMET	1	
27	3063-22510	▪ ▪ CLIP	1	
28	596 01 98-01	▪ ▪ PIPE	1	
29	3570-15311	▪ SPRING	1	
30	3063-22510	▪ CLIP	1	
31	1535-85520	BAND	2	
32	582 86 01-01	TANK ASSY	1	
33	1030-91340	DRIVER	1	
34	3144-91160	SOCKET	1	
35	09007-00425	WRENCH	1	

**Fig.5 ENGINE UNIT 01**

**BK4302FL/ BK4302FL-EZ  
BK4302FLJ/ BK4302FLJ-EZ**

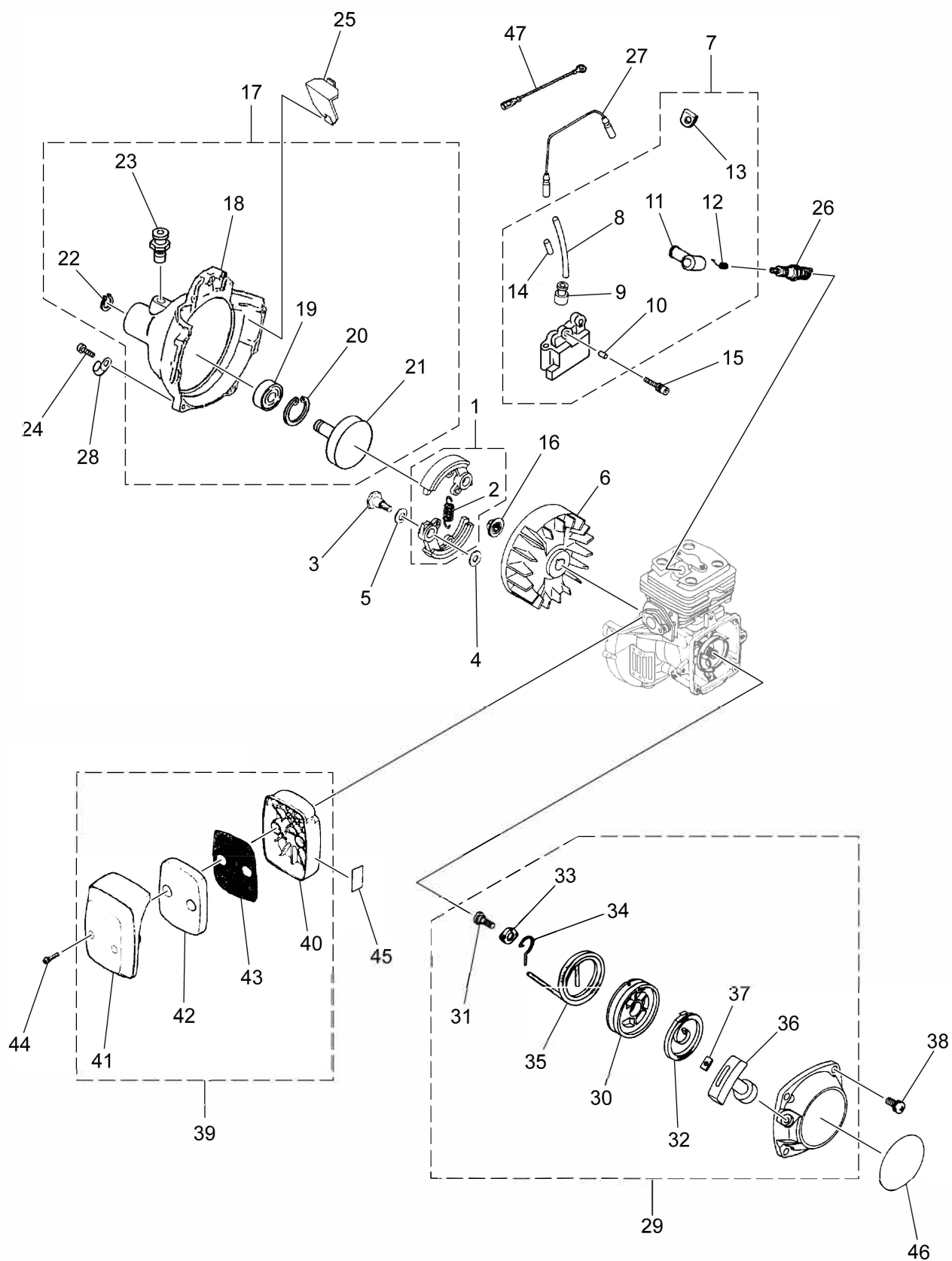


**Fig. 5 BK4302FL/ BK4302FL-EZ ENGINE UNIT 01**  
**BK4302FLJ/ BK4302FLJ-EZ**

Key#	PART NUMBER	DESCRIPTION	Q'TY	REMARKS
1	4500-12110	CYLINDER	1	M5x22
2	1850-12130	BOLT	4	
3	4500-13120	GASKET, CYL	1	
4	585 56 52-01	CRANKCASE COMP.	1	
5	2629-21130	• PIN	3	
6	4500-21140	GASKET, CASE	1	M5x30
7	06030-06201	BEARING	2	
8	4810-21210	SEAL	1	
9	1650-21220	SEAL	1	
10	01252-30530	BOLT	4	
11	04065-03212	SNAPRING	1	
12	4500-41110	PISTON	1	
13	8488C40300	RING, PISTON	2	
14	2850-41310	PIN	1	
15	1300-41320	RING	2	
16	T2100-41410	BEARING	1	
17	2850-41510	WASHER	2	
18	585 15 30-01	CRANKSHAFT COMP.	1	
19	1000-43240	KEY	1	
20	4550-15110	MUFFLER	1	
21	01252-30565	BOLT	2	M5x65
22	3310-31720	BOLT	1	
23	4700-15212	GASKET, MUFFLER	1	
24	4500-32110	COVER, CYLINDER	1	
25	4500-32120	SCREW	4	
26	4500-32210	GUARD	1	Except FL-EZ
27	1852-72121	GROMMET	1	
28	4500-75210	PULLEY	1	
29	4700-75310	COLLAR	1	
30	4550-13160	INSULATOR	1	
31	848G6014B1	CASKET, INSU	1	
32	4550-13130	GASKET, CARB	1	
33	2193-86150	CLAMP	1	
34	1970-31151	LABEL, COVER	1	
35	505 29 62-02	GUARD	1	
36	0263-90514	SCREW	1	M5x14
37	4500-15221	PLATE, MUFFLER	1	
38	0263-90514	SCREW	1	

Fig.6 ENGINE UNIT 02

BK4302FL/ BK4302FLJ

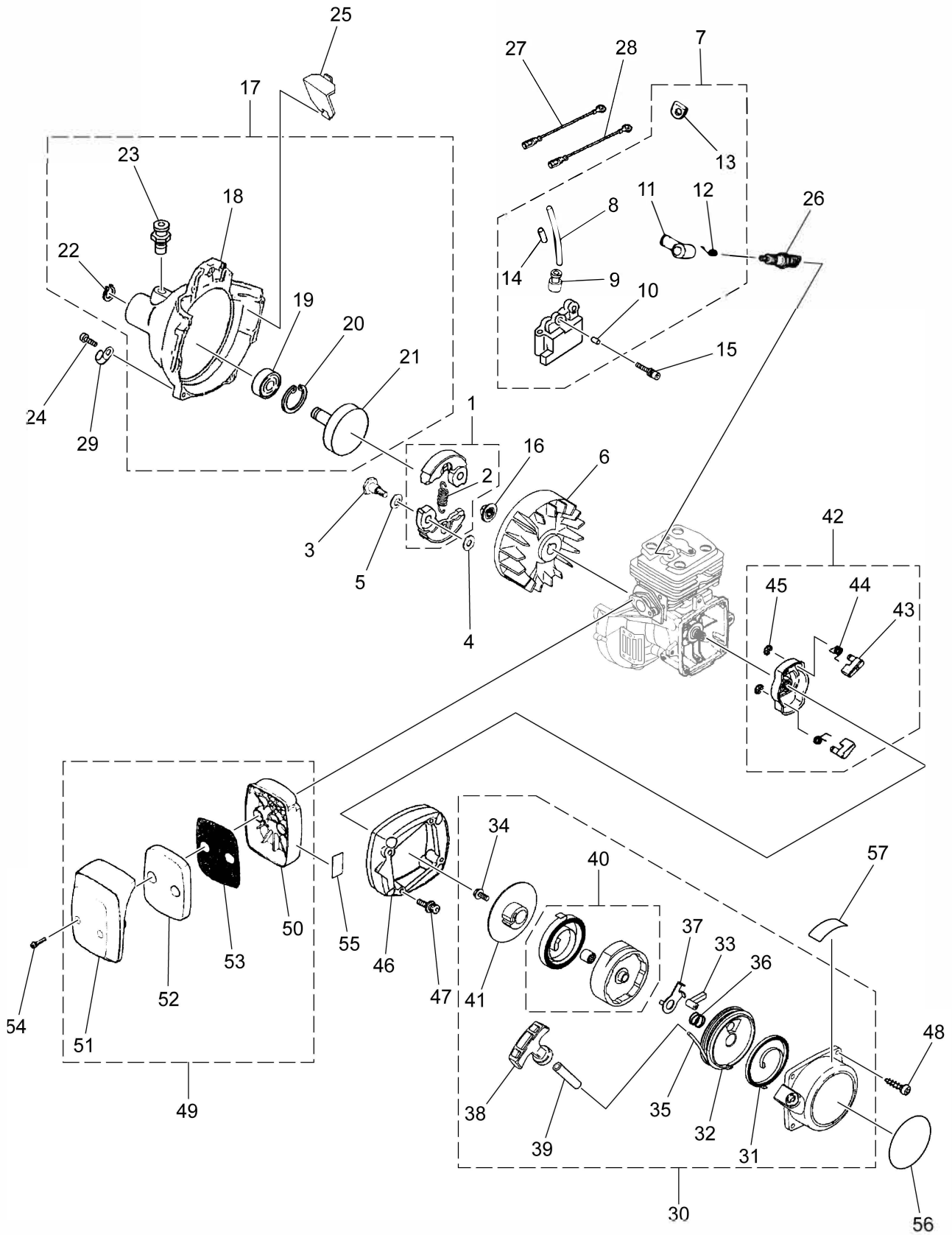


**Fig. 6 BK4302FL/ BK4302FLJ ENGINE UNIT 02**

Key#	PART NUMBER	DESCRIPTION	Q'TY	REMARKS
1	848H705110	SHOE-COMP.	1	with compatibility OLD 4500-51220
2	8488EA4700	▪ CLUTCH SPRING (SN 20201400001 ~)	1	
3	1200-51211	SCREW	2	
4	1200-51230	WASHER	2	
5	1200-51241	WASHER	2	
6	T1153-71110	ROTOR	1	φ 5xL8
7	T1162-71200	COIL ASSY	1	
8	4500-71220	▪ CORD, HIGH	1	
9	2616-71320	▪ CAP	1	
10	T1153-71250	▪ PIN	2	
11	5500-72110	▪ CAP	1	
12	5500-72120	▪ SPRING	1	
13	5500-72130	▪ GROMMET	1	
14	T1512-71320	▪ TUBE	1	
15	3350-14150	BOLT	2	
16	1650-43230	NUT	1	
17	T1153-31101	HOUSING ASSY	1	
18	T1153-31111	▪ HOUSING	1	
19	84888C0280	▪ BEARING	1	
20	04065-02812	▪ RING	1	
21	591 44 36-01	▪ DRUM	1	
22	04064-01210	▪ SNAP RING	1	
23	T3087-12600	▪ STOPPER COMP.	1	
24	3310-12281	BOLT	4	
25	4500-31210	PLATE, VOLUTE	1	
26	3699-90419A	SPARK PLUG	1	RCJ-6Y
27	T1153-71240	CORD	1	
28	8488K40010	CLAMP	1	NORMAL
29	4500-75100	RECOIL ASSY	1	
30	4500-75120	▪ REEL	1	
31	4500-75150	▪ SCREW	1	
32	1850-75130	▪ SPRING	1	
33	4500-75180	▪ COLLAR	1	
34	4500-75190	▪ ARM	1	
35	4500-75160	▪ ROPE	1	
36	1140-75320	▪ KNOB	1	
37	5500-75170	▪ PLATE	1	
38	4500-75511	SCREW	4	
39	1400-82002	CLEANER ASSY	1	
40	1400-82113	▪ BODY	1	
41	1400-82121	▪ COVER	1	M4x25
42	1418-82130	▪ ELEMENT	1	
43	1400-82141	▪ SCREEN	1	
44	4550-82150	SCREW	2	
45	1133-82060	LABEL	1	
46	T1234-75411	LABEL, RECOIL	1	BK4302FL
47	8488M10000	CORD	1	

**Fig.7 ENGINE UNIT 02**

**BK4302FL-EZ/ BK4302FLJ-EZ**

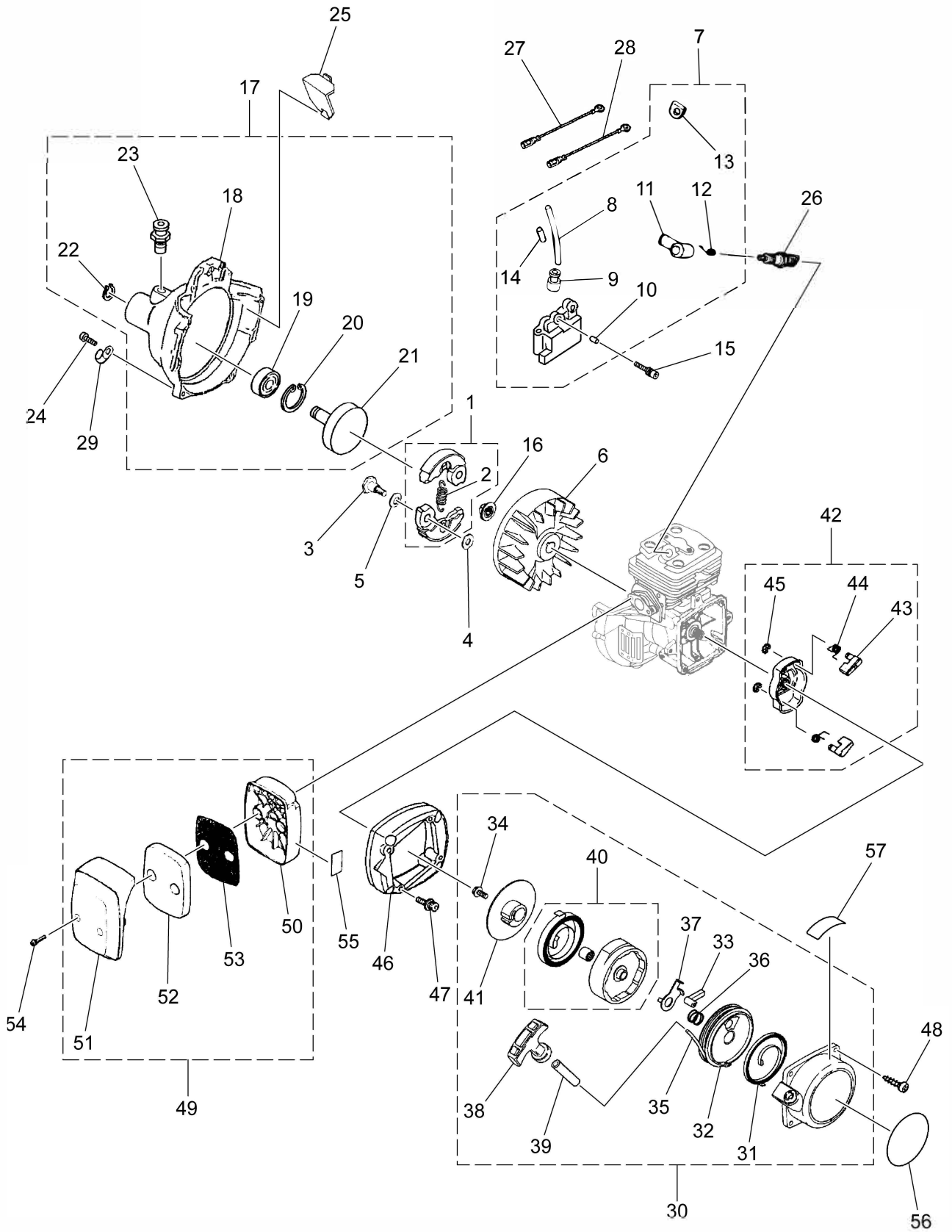


**Fig. 7 BK4302FL-EZ/ BK4302FLJ-EZ ENGINE UNIT 02**

Key#	PART NUMBER	DESCRIPTION	Q'TY	REMARKS
1	848H705110	SHOE-COMP.	1	with compatibility
2	8488EA4700	• CLUTCH SPRING (SN 20201400001 ~)	1	OLD 4500-51220
3	1200-51211	SCREW	2	
4	1200-51230	WASHER	2	
5	1200-51241	WASHER	2	
6	T1153-71110	ROTOR	1	
7	T1162-71200	COIL ASSY	1	
8	4500-71220	• CORD, HIGH	1	
9	2616-71320	• CAP	1	
10	T1153-71250	• PIN	2	
11	5500-72110	• CAP	1	
12	5500-72120	• SPRING	1	
13	5500-72130	• GROMMET	1	
14	T1512-71320	• TUBE	1	
15	3350-14150	BOLT	2	
16	1650-43230	NUT	1	
17	T1153-31101	HOUSING ASSY	1	
18	T1153-31111	• HOUSING	1	
19	84888C0280	• BEARING	1	
20	04065-02812	• RING	1	
21	591 44 36-01	• DRUM	1	
22	04064-01210	• SNAP RING	1	
23	T3087-12600	• STOPPER	1	
24	3310-12281	BOLT	4	
25	4500-31210	PLATE	1	
26	3699-90419A	SPARK PLUG	1	RCJ-6Y
27	T1153-71240	CORD	1	
28	8488M10000	CORD	1	
29	8488K40010	CLAMP	1	
30	848EEF7514	RECOIL ASSY	1	SUPER e-START
31	T1812-75190	• SPRING, SPIRAL	1	
32	590 52 44-01	• REEL	1	
33	T1812-75140	• RATCHET	1	
34	T1812-75150	• SCREW	1	
35	T1207-75160	• ROPE	1	
36	T1812-75170	• SPRING, BREAK	1	
37	T1812-75181	• RETAINER	1	
38	1490-75181	• KNOB	1	
39	T1207-75190	• PIPE	1	
40	848G6L7532	• HOLDER ASSY	1	
41	T1812-75630	• PULLER, RATCHET	1	
42	T1206-75201	PULLEY ASSY	1	
43	T1812-75220	• RATCHET	2	
44	T1812-75231	• SPRING	2	

**Fig.7 ENGINE UNIT 02**

**BK4302FL-EZ/ BK4302FLJ-EZ**





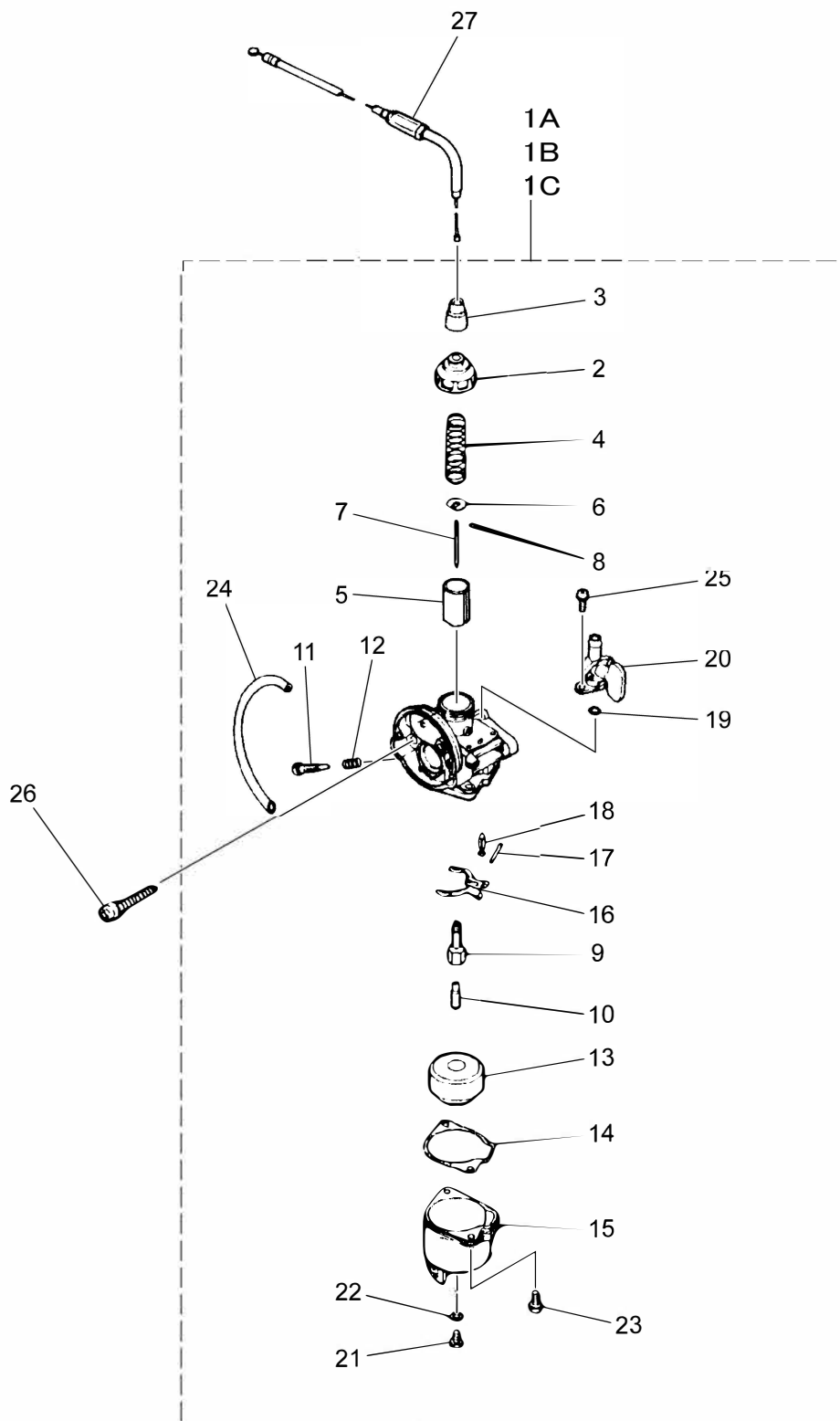
**Fig. 7 BK4302FL-EZ/ BK4302FLJ-EZ ENGINE UNIT 02**

[illegible]

**Fig.8 CARBURETOR**

**BK4302FL/ BK4302FL-EZ**  
**BK4302FLJ/ BK4302FLJ-EZ**

1A : G12P-1A (with "TK" marking)  
 1B : G12P-4D (with "TK" marking)  
 1C : H117-3H (with "H" marking)



**Fig. 8 BK4302FL-EZ/BK4302FL-EZ CARBURETOR 1A : G12P-1A (with “TK” marking)  
BK4302FLJ/ BK4302FLJ-EZ 1B : G12P-4D (with “TK” marking)**

Key#	PART NUMBER	DESCRIPTION	Q'TY	REMARKS
1A	4550-81000	CARBURETOR ASSY	1	G12P-1A ~#01299999
1B	T1162-81000	CARBURETOR ASSY	1	G12P-4D ~#20202100000
2	1650-81121	▪ CAP, DRAIN	1	
3	1141-81120	▪ CAP	1	
4	1335-81060	▪ SPRING, THROTTLE	1	
5	4550-81150	▪ VALVE, THROTTLE	1	
6A	1335-81070	▪ SPRING RECEIVE	1	~#01299999
6B	T1012-81070	▪ SPRING RECEIVE	1	~#20202100000
7	4550-81210	▪ NEEDLE, JET	1	
8	1030-81000-16	▪ CLIP	1	
9A	1400-81230	▪ JET, NEEDLE	1	NJ $\phi$ 2.097 ~#01299999
9B	1620-81230	▪ JET, NEEDLE	1	NJ $\phi$ 2.080
10A	4550-81240	▪ JET, MAIN	1	~#20202100000 MJ #67 ~#01299999
10B	1620-81240	▪ JET, MAIN	1	MJ #62 ~#20202100000
11	2751-81250	▪ SCREW, ADJUST	1	
12	1650-81260	▪ SPRING, ADJUST	1	
13	1335-81180	▪ FLOAT	1	
14	1400-81320	▪ PACKING	1	
15	1400-81310	▪ CHAMBER	1	
16	1400-81340	▪ HINGE	1	
17	1400-81350	▪ PIN	1	
18	1400-81361	▪ VALVE	1	
19	1400-81540	▪ RING	1	
20	1403-81500	▪ COCK	1	
21A	1337-81340	▪ SCREW	1	~#01299999
21B	1400-81650	▪ SCREW, DRAIN	1	~#20202100000
22A	1038-81000-33	▪ PACKING	1	~#01299999
22B	1400-81660	▪ PACKING	1	~#20202100000
23	0260-10410	▪ SCREW	2	
24	4550-81710	▪ PIPE	1	
25	0260-10412	▪ SCREW	2	M4x16
26	0263-90565	SCREW	2	M5x60
27	8488P20500	CABLE COMP.	1	

**Fig. 8 BK4302FL/ BK4302FL-EZ CARBURETOR 1C : H117-3H (with "H" marking)**  
**BK4302FLJ/ BK4302FLJ-EZ #20202100001~**

Key#	PART NUMBER	DESCRIPTION	Q'TY	REMARKS
1	596 13 97-01	CARBURETOR ASSY	1	H117-3H
2	599 73 95-01	▪ COVER, VALVE	1	
3	599 74 14-01	▪ COVER, RUBBER	1	
4	599 73 93-01	▪ SPRING, THROTTLE VALVE	1	
5	599 73 91-01	▪ VALVE THROTTLE	1	
6	599 73 90-01	▪ E-CLIP, LARGE	1	
7	599 73 86-01	▪ NEEDLE, MAIN	1	
8	599 73 89-01	▪ E-CLIP, SMALL	1	
9	599 73 85-01	▪ NOZZLE, MAIN	1	NJ $\phi$ 2.080
10	599 73 84-01	▪ JET, MAIN	1	MJ #62
11	599 73 88-01	▪ ADJUSTER, IDLE	1	
12	599 73 87-01	▪ SPRING, IDLE	1	
13	599 73 73-01	▪ FLOAT	1	
14	599 73 70-01	▪ GASKET, FLOAT CHAMBER	1	
15	599 73 71-01	▪ FLOAT, CHAMBER	1	
16	599 74 22-01	▪ LEVER, FLOAT	1	
17	599 74 21-01	▪ PIN, FLOAT	1	
18	599 74 23-01	▪ NEEDLE, INLET	1	
19	599 73 68-01	▪ O-RING, COCK	1	
20	529 70 38-01	▪ FITTING, INLET	1	
21	599 73 75-01	▪ PLUG, DRAIN	1	
22	599 73 74-01	▪ O-RING, DRAIN SCREW	1	
23	0263-10412	▪ SCREW	2	
24	599 73 82-01	▪ PIPE, BALANCE	1	
25	599 73 80-01	▪ VALVE, SCREW	2	M4x8
26	0263-90565	SCREW	2	M5x60
27	8488P20500	CABLE COMP.	1	