



PARTS LIST

BRUSHCUTTERS

BK3420FL (for Korea)

NOTE :

1. Use KOMATSU ZENOAH genuine parts as specified in the parts list for repair and/or replacement.
2. KOMATSU ZENOAH does not warrant the machines, which have been damaged by the use of any parts other than those specified by the company.
3. When placing parts orders for repair and/or replacement, check if the model name and the serial number are applicable to those specified in the parts list, then use parts number described in the parts list.
4. The contents described in the parts list are accurate as of the date and may change due to improvement.
5. The parts for the machine shall be supplied ten (10) years after the machine is discontinued. [It is possible that some specific parts may be subject to change of their delivery term and list price within the limit of ten (10) years after the machine is discontinued. It is also possible that some parts may be available even after the limit of ten (10) years.]

APPLICABLE SERIAL NUMBERS:

50100101 and up

March 2005

Fig.1 DRIVE UNIT & ACCESSORIES

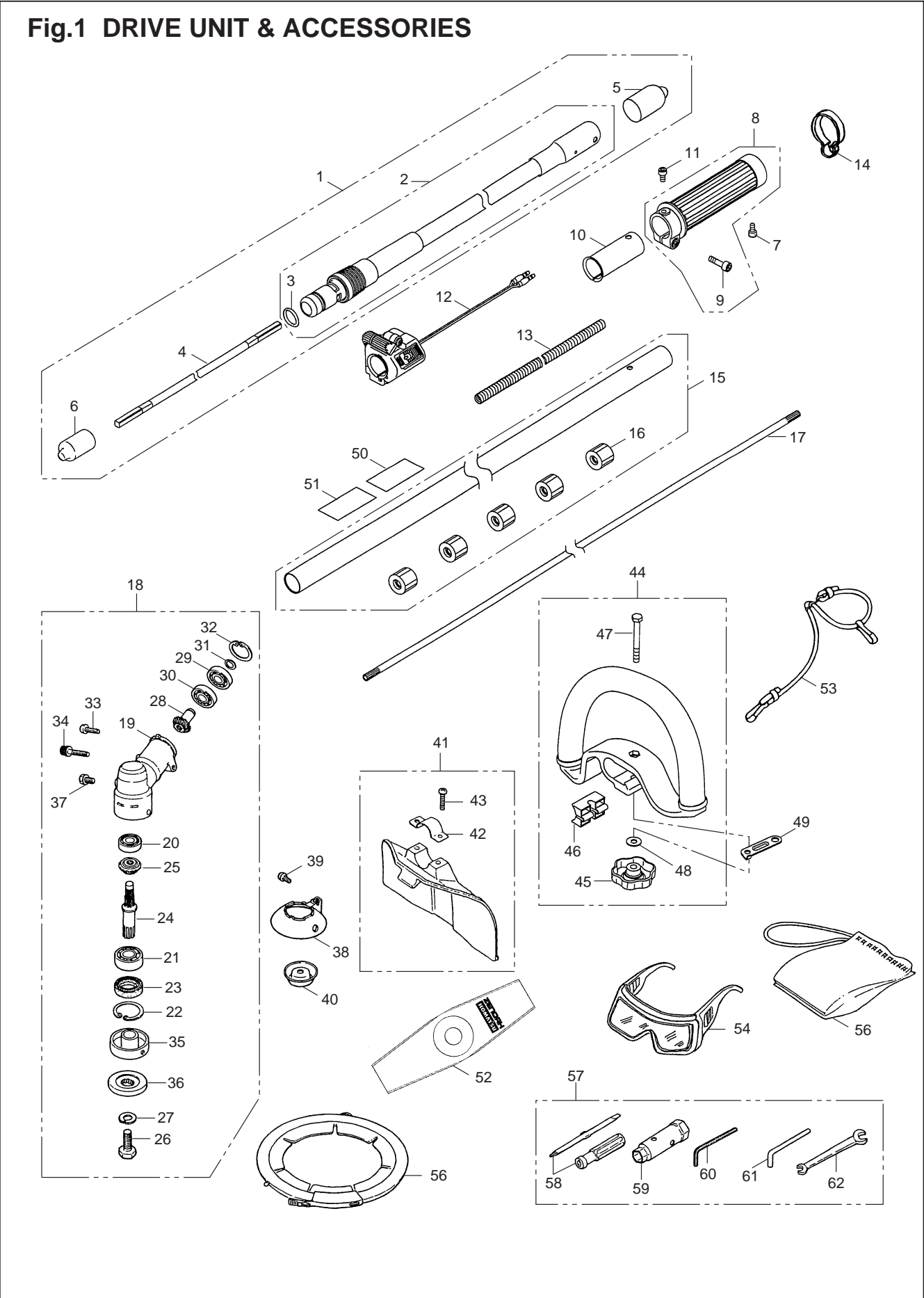


Fig.1 DRIVE UNIT & ACCESSORIES

Key#	PART NUMBER	DESCRIPTION	Q'TY /UNIT	NOTE	Key#	PART NUMBER	DESCRIPTION	Q'TY /UNIT	NOTE
1	T3000-21001	FLEX SHAFT ASSY	1		57	3550-91000	TOOL SET	1	
2	T3000-21121	• LINER	1		58	1030-91340	• DRIVER	1	
3	07000-12018	•• O-RING	1	ø17.8 x ø2.4	59	3239-91310	• SOCKET	1	
4	3570-21112	• SHAFT FLEX	1		60	09007-00425	• WRENCH	1	
5	3570-21130	• COVER	1		61	3540-91110	• BAR	1	
6	6193-21130	• COVER	1		62	3540-91120	• SPANNER	1	
7	0263-10510	SCREW	1	M5 x L10					
8	848BC03310	JOINT COMP	1						
9	01252-30520	• BOLT	1	M5 x L20					
10	848BC033A0	SPACER	1						
11	01252-30510	BOLT	1	M5 x L10					
12	8488R00071	LEVER ASSY	1						
13	T3320-14510	TUBE	1						
14	848BC059M0	CLAMP	3						
15	T3541-11300	PIPE COMP	1						
16	T3541-12120	• BUSH	5						
17	T3541-12211	SHAFT	1						
18	6440-13002	GEARCASE ASSY	1						
19	6440-13122	• GEARCASE	1						
20	T3300-13521	• BEARING	1						
21	T3403-13510	• BEARING	1						
22	04065-02612	• SNAP RING	1						
23	3565-13130	• SEAL	1						
24	6440-13211	• SHAFT	1						
25	6440-13220	• GEAR	1						
26	3560-13261	• BOLT	1						
27	3560-13290	• WASHER	1						
28	6440-13311	• PINION	1						
29	T3300-13531	• BEARING	1						
30	T3403-13330	• BEARING	1						
31	T3300-13330	• RING	1						
32	04065-02412	• SNAPRING	1						
33	01252-30510	• BOLT	1						
34	3350-21320	• BOLT	1						
35	6440-13242	• HOLDER A	1						
36	6019-13250	• HOLDER B	1						
37	0224-40610	• BOLT	1						
38	6440-13412	COVER	1						
39	0263-30412	SCREW	1						
40	6420-13280	COVER	1						
41	T3300-24000	GUARD ASSY	1						
42	848B4166C0	• CLAMP	1						
43	0263-60525	• SCREW	2						
44	T3541-14000	HANDLE ASSY	1						
45	T3541-14341	• GRIP	1						
46	T3541-14351	• SPACER	1						
47	0224-00655	• BOLT	1						
48	3238-15230	• WASHER	1						
49	T3541-17110	PLATE	1						
50	848KD090R0	PLATE, NAME	1						
51	6420-11590	PLATE, CAUTION	1						
52	8488Z62030	BLADE	1	255-2T					
53	3570-37214	BAND	1						
54	T3541-92110	GOGGLE	1						
55	6251-15910	COVER	1						
56	3520-91110	BAG	1						

Fig.2 DRIVE UNIT & ACCESSORIES

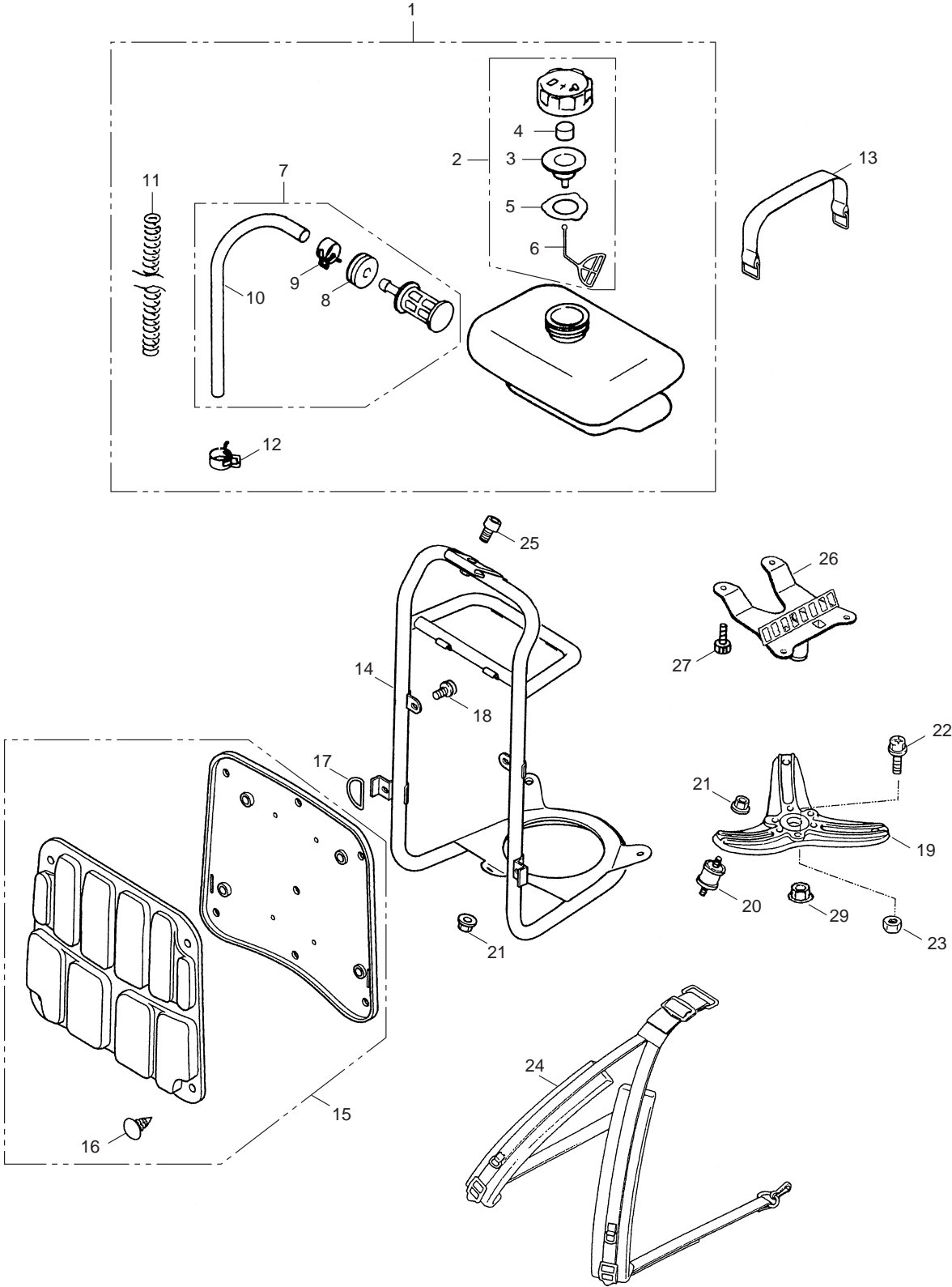


Fig.2 DRIVE UNIT & ACCESSORIES

Key#	PART NUMBER	DESCRIPTION	Q'TY /UNIT	NOTE	Key#	PART NUMBER	DESCRIPTION	Q'TY /UNIT	NOTE
1	T1055-85000	TANK ASSY	1						
2	2133-85302	• CAP ASSY	1						
3	4570-85230	•• CAP, INNER	1						
4	1030-85141	•• ELEMENT	1						
5	4500-85220	•• PACKING	1						
6	3317-57242	•• STOPPER	1						
7	4551-85101	• JOINT ASSY	1						
8	1400-85141	•• GROMMET	1						
9	3063-22510	•• CLIP	1						
10	4551-86111	•• PIPE	1						
11	3570-15311	• SPRING	1						
12	3063-22510	• CLIP	1						
13	1535-85520	BAND	2						
14	T1154-35100	FRAME COMP	1						
15	T1144-35200	PAD ASSY	1						
16	5940-14350	• CLIP	4						
17	T1144-35310	RING	2						
18	0263-30514	SCREW	4	M5 x L14					
19	T1235-13110	PLATE COMP	1						
20	6129-51310	JOINT	3						
21	1610-13120	NUT	6	M5 x P0.8					
22	0224-30625	BOLT	1	M6 x L25					
23	0280-10605	NUT	1	M5 x P1.0					
24	T1154-37100	BAND ASSY	1						
25	01252-30510	BOLT	1	M5 x L10					
26	T1235-13310	BRACKET COMP	1						
27	3310-31720	BOLT	4	M5 x L14					
29	2091-13120	NUT	1						

Fig.3 ENGINE UNIT

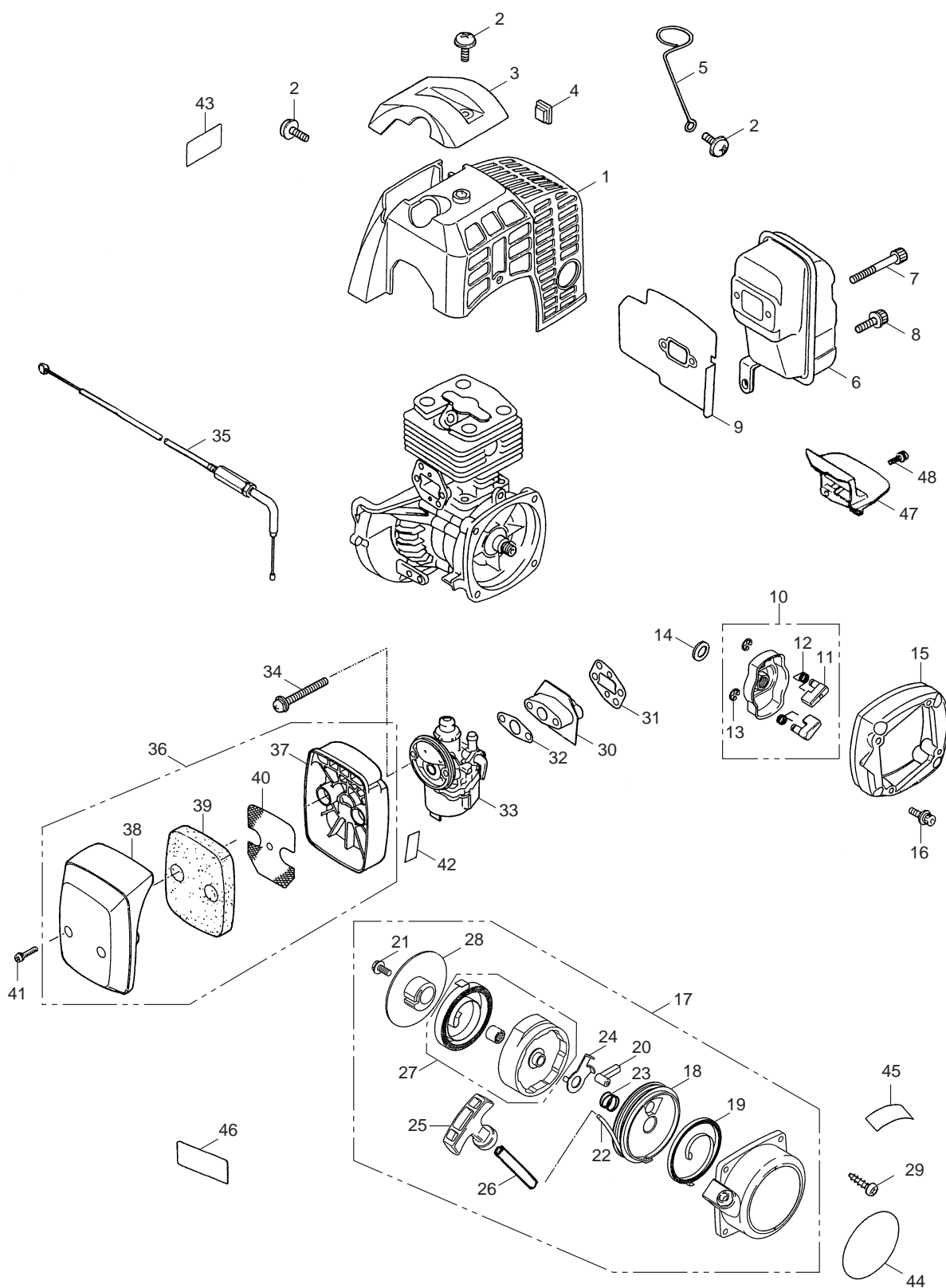


Fig.3 ENGINE UNIT

Key#	PART NUMBER	DESCRIPTION	Q'TY /UNIT	NOTE	Key#	PART NUMBER	DESCRIPTION	Q'TY /UNIT	NOTE
1	4550-32110	COVER, CYLINDER	1						
2	4500-32120	SCREW	4						
3	4500-32210	GUARD	1						
4	1852-72121	GROMMET	1						
5	2193-86150	CLAMP	1						
6	T1024-15110	MUFFLER	1						
7	01252-30560	BOLT	2						
8	3310-31720	BOLT	1						
9	4700-15211	GASKET	1						
10	T1206-75201	PULLEY ASSY	1						
11	T1812-75220	• RATCHET	2						
12	T1812-75231	• SPRING	2						
13	T1812-75240	• E-RING	2						
14	4700-75310	COLLAR	1						
15	T1206-75510	SPACER	1						
16	3544-11510	BOLT	4						
17	848EEF7513	RECOIL ASSY	1						
18	T1812-75120	• REEL	1						
19	T1812-75190	• SPRING	1						
20	T1812-75140	• RATCHET	1						
21	T1812-75150	• SCREW	1	M5 x L12					
22	T1207-75160	• ROPE	1						
23	T1812-75170	• SPRING, BRAKE	1						
24	T1812-75181	• RETAINER	1						
25	1490-75181	• KNOB	1						
26	T1207-75190	• PIPE	1						
27	848G6L7531	• HOLDER ASSY	1	t 0.8					
28	T1812-75630	• PULLEY, RATCHET	1						
29	1900-31410	SCREW	4						
30	4550-13160	INSULATOR	1						
31	4500-13150	GASKET, INSU.	1						
32	4550-13130	GASKET, CARB	1						
33	T1151-81001	CARB ASSY	1						
34	0263-90565	SCREW	2	M5 x L65					
35	8488P20050	CABLE COMP	1						
36	1400-82002	CLEANER ASSY	1						
37	1400-82113	• BODY	1						
38	1400-82121	• COVER	1						
39	1418-82130	• ELEMENT	1						
40	1400-82141	• SCREEN	1						
41	4550-82150	SCREW	2	M4 x L25					
42	1133-82060	LABEL	1						
43	1970-31150	LABEL	1						
44	848G3M90C0	LABEL, RECOIL	1						
45	T1812-91190	LABEL, CAUTION	1						
46	5500-91190	LABEL, CAUTION	1						
47	4500-15221	PLATE	1						
48	0263-90514	SCREW	1						

Fig.4 ENGINE UNIT

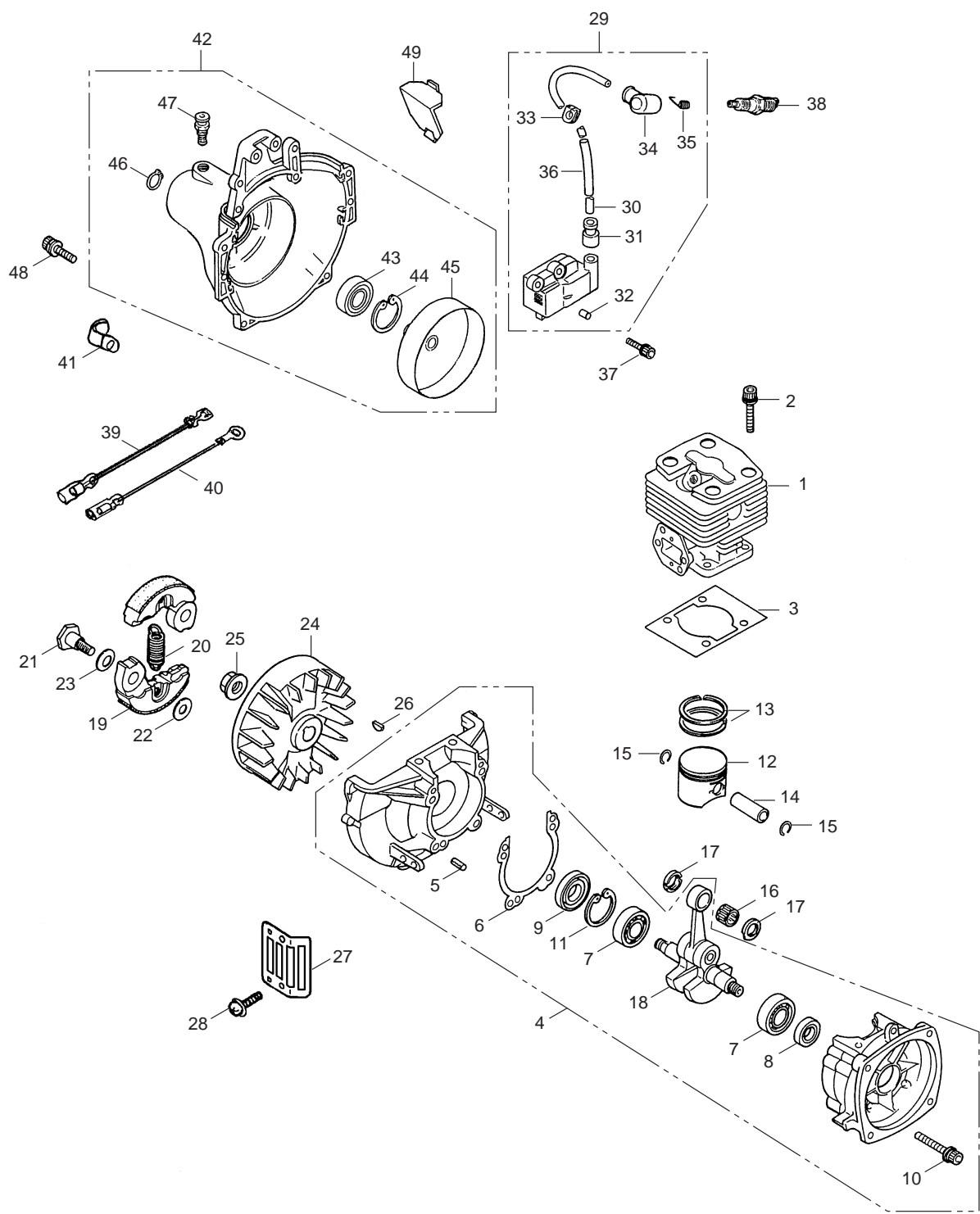


Fig.4 ENGINE UNIT

Key#	PART NUMBER	DESCRIPTION	Q'TY /UNIT	NOTE	Key#	PART NUMBER	DESCRIPTION	Q'TY /UNIT	NOTE
1	T1151-12110	CYLINDER	1						
2	1850-12130	BOLT	4	M5 x L22					
3	4500-13120	GASKET, CYLINDER	1						
4	4500-21101	CRANKCASE COMP	1						
5	2629-21130	• PIN	3						
6	4500-21140	GASKET, CASE	1						
7	06030-06201	BEARING	2						
8	4810-21210	SEAL	1						
9	1650-21220	SEAL	1						
10	01252-30530	BOLT	4	M5 x L30					
11	04065-03212	SNAP RING	1						
12	4700-41110	PISTON	1						
13	1650-41210	RING, PISTON	2						
14	1030-41310	PIN, PISTON	1						
15	1300-41320	RING, PISTON	2						
16	T2100-41410	BEARING	1						
17	2850-41510	WASHER	2						
18	4500-42000	CRANKSHAFT COMP	1						
19	1400-51111	SHOE, CLUTCH	2						
20	1651-51220	SPRING	1						
21	1200-51211	SCREW	2						
22	1200-51230	WASHER	2						
23	1200-51241	WASHER	2						
24	T1153-71110	ROTOR	1						
25	1650-43230	NUT	1	M8 x P1.0					
26	1000-43240	KEY	1						
27	4500-22110	GUARD	1						
28	0263-90514	SCREW	2	M5 x L14					
29	T1153-71200	COIL ASSY	1						
30	4500-71220	• CORD	1						
31	2616-71320	• CAP	1						
32	T1153-71250	• PIN	2	ø5 x L8					
33	5500-72130	• GROMMET	1						
34	5500-72110	• CAP	1						
35	5500-72120	• SPRING	1						
36	T1512-71320	• TUBE	1						
37	3350-14150	BOLT	2	M4 x L20					
38	3699-90020-10	SPARKPLUG	1						
39	T1153-71240	CORD	1						
40	8488M10000	CORD	1						
41	8488K40010	CLAMP	1						
42	T1173-31100	HOUSING ASSY	1						
43	06002-06001	• BEARING	1						
44	04065-02812	• SNAP RING	1						
45	6278-12311	• DRUM, CLUTCH	1						
46	04064-01210	• SNAP RING	1						
47	T3087-12600	• STOPPER COMP	1						
48	3310-12281	BOLT	4	M5 x L20					
49	4500-31210	PLATE, VOLUTE	1						

Fig.5 CARBURETOR

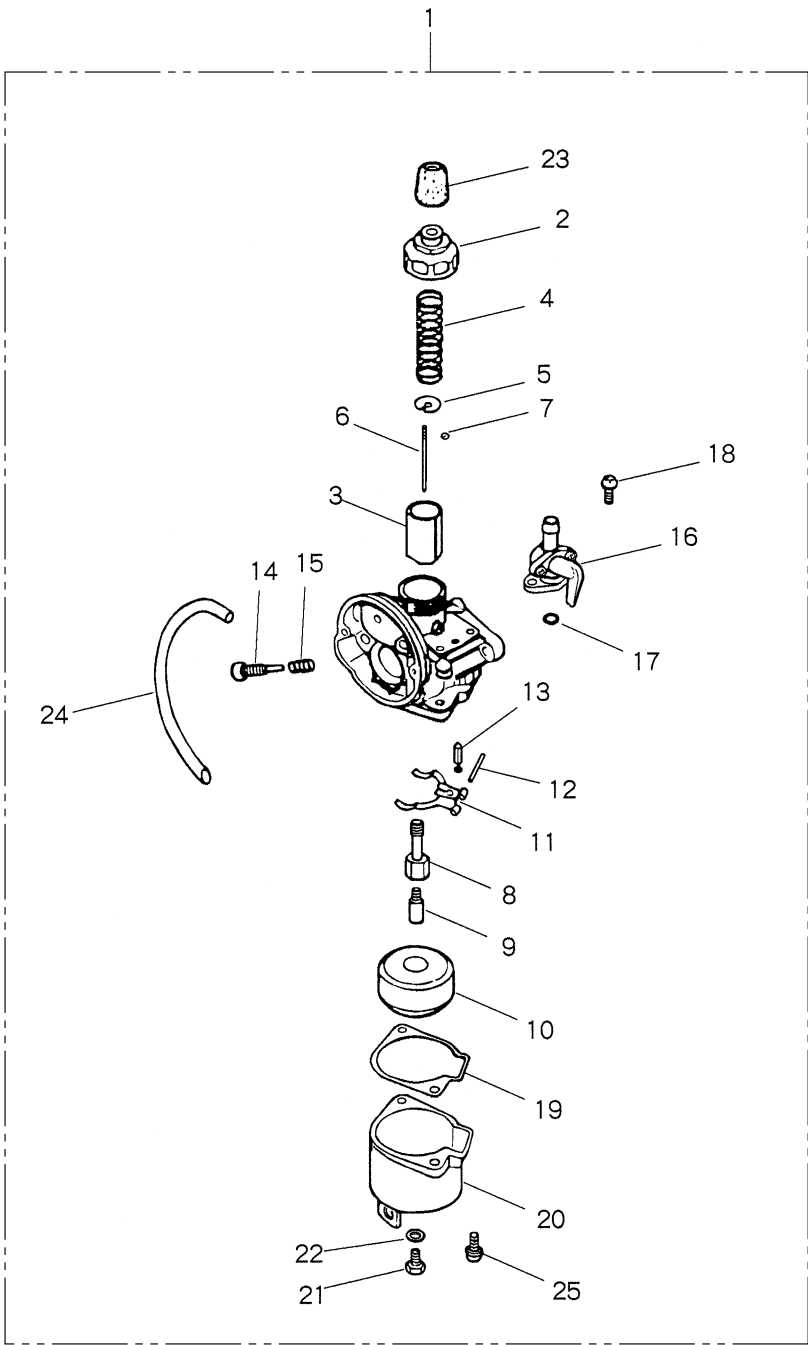


Fig.5 CARBURETOR

Key#	PART NUMBER	DESCRIPTION	Q'TY /UNIT	NOTE	Key#	PART NUMBER	DESCRIPTION	Q'TY /UNIT	NOTE
1	T1151-81001	CARBURETOR ASSY	1						
2	1650-81122	• CAP, BODY	1						
3	T1151-81150	• VALVE, THROTTLE	1						
4	1030-81000-14	• SPRING	1						
5	1030-81000-17	• RECEIVE	1						
6	T1151-81210	• NEEDLE, JET	1						
7	1030-81000-16	• CLIP	1						
8	1400-81230	• JET, NEEDLE	1	NJ ø2.097					
9	T1151-81240	• JET, MAIN	1	#59					
10	1335-81180	• FLOAT	1						
11	1400-81340	• HINGE	1						
12	1400-81350	• PIN	1						
13	1650-81361	• VALVE, NEEDLE	1						
14	1650-81251	• SCREW	1						
15	1650-81260	• SPRING	1						
16	1403-81500	• COCK ASSY	1						
17	1400-81540	• O-RING	1						
18	0260-10410	• SCREW	2	M4 x L10					
19	1400-81320	• PACKING	1						
20	1400-81310	• CHAMBER	1						
21	1400-81650	• SCREW, DRAIN	1						
22	1400-81660	• PACKING	1						
23	1141-81120	• CAP	1						
24	1650-81710	• PIPE	1						
25	0260-10412	• SCREW	1	M4 x L12					



KOMATSU ZENOAHI CO.

1-9 Minamidai, Kawagoe, Saitama, 350-1192 Japan