



# PARTS LIST

## BRUSHCUTTERS

# BKZ315L-EZ

( for KOREA )  
ENGINE MODEL : GZ30N

**NOTE :**

1. Use HUSQVARNA ZENOAH genuine parts as specified in the parts list for repair and/or replacement.
2. HUSQVARNA ZENOAH does not warrant the machines, which have been damaged by the use of any parts other than those specified by the company.
3. When placing parts orders for repair and/or replacement, check if the model name and the serial number are applicable to those specified in the parts list, then use parts number described in the parts list.
4. The contents described in the parts list are accurate as of the date and may change due to improvement.
5. The parts for the machine shall be supplied ten (10) years after the machine is discontinued. [It is possible that some specific parts may be subject to change of their delivery term and list price within the limit of ten (10) years after the machine is discontinued. It is also possible that some parts may be available even after the limit of ten (10) years.]

**APPLICABLE SERIAL NUMBERS:**

20180000101 and up

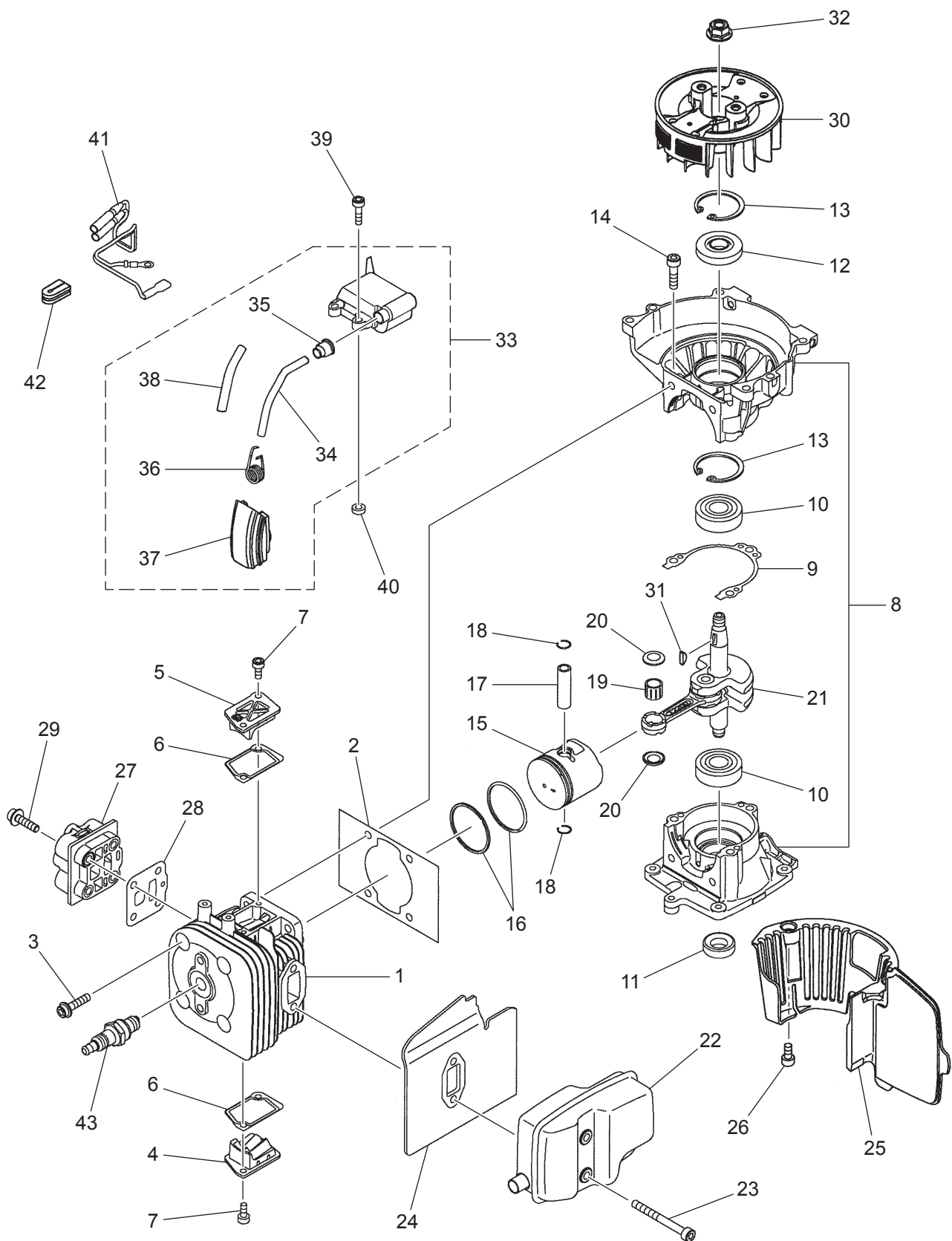
**Fig.1 ENGINE GROUP 01**

Fig. 1 BKZ315L-EZ

## ENGINE GROUP 01

| Key# | PART NUMBER  | DESCRIPTION | Q'TY | REMARKS      |
|------|--------------|-------------|------|--------------|
| 1    | 848F7012A0   | CYLINDER    | 1    | M5x22-T27    |
| 2    | 582 51 98-01 | GASKET      | 1    |              |
| 3    | 4820-12130   | BOLT        | 4    |              |
| 4    | 848F6012C1   | COVER       | 1    |              |
| 5    | 848F6012D2   | COVER       | 1    |              |
| 6    | 848F6012E1   | GASKET      | 2    | M4x10-T27    |
| 7    | 8488141000   | SCREW       | 4    |              |
| 8    | 848F602111   | CASE-COMP   | 1    |              |
| 9    | 848F6021D1   | GASKET      | 1    |              |
| 10   | 84889C3200   | BEARING     | 2    |              |
| 11   | 4810-21210   | SEALING     | 1    | 12x22        |
| 12   | 1650-21220   | SEAL        | 1    | 12x32        |
| 13   | 04065-03212  | SNAP RING   | 2    | M5x20-T27    |
| 14   | 4820-13180   | BOLT        | 3    |              |
| 15   | 848F7041A0   | PISTON      | 1    |              |
| 16   | 8488C38200   | PISTON RING | 2    |              |
| 17   | 8488B93200   | PISTON PIN  | 1    |              |
| 18   | 3310-41320   | SNAP RING   | 2    |              |
| 19   | 580 38 48-01 | BEARING     | 1    |              |
| 20   | 1650-41510   | WASHER      | 2    |              |
| 21   | 848F604201   | SHAFT-COMP  | 1    | M5x50-T27    |
| 22   | 848F6215A2   | MUFFLER-A   | 1    |              |
| 23   | 4820-15310   | SCREW       | 2    |              |
| 24   | 848F6015C1   | GASKET      | 1    |              |
| 25   | 848F601530   | PLATE       | 1    |              |
| 26   | 4820-12350   | SCREW       | 2    | M5x10-T27    |
| 27   | 848F7014A0   | INSULATOR   | 1    | M5x20-T27    |
| 28   | 848F6014B2   | GASKET,INSU | 1    |              |
| 29   | T4950-52021  | BOLT        | 4    |              |
| 30   | T1700-71110  | ROTOR       | 1    |              |
| 31   | 1000-43240   | KEY         | 1    | M8           |
| 32   | 1650-43230   | NUT         | 1    |              |
| 33   | 582 52 01-01 | COIL ASSY   | 1    | L105         |
| 34   | 574 62 55-01 | • CORD      | 1    |              |
| 35   | 2616-71320   | • CAP       | 1    | L70          |
| 36   | 848F0871G0   | • SPRING    | 1    |              |
| 37   | 848F3071C2   | • CAP       | 1    |              |
| 38   | 8488MX0700   | • TUBE      | 1    |              |
| 39   | 585 69 83-01 | BOLT        | 2    |              |
| 40   | 1260-71261   | SPACER      | 2    | M4x20-T27    |
| 41   | T1551-73200  | CORD-COMP   | 1    | NGK CMR7H-10 |
| 42   | 4810-72120   | GROMMET     | 1    |              |
| 43   | 3699-92537   | SPARK PLUG  | 1    |              |

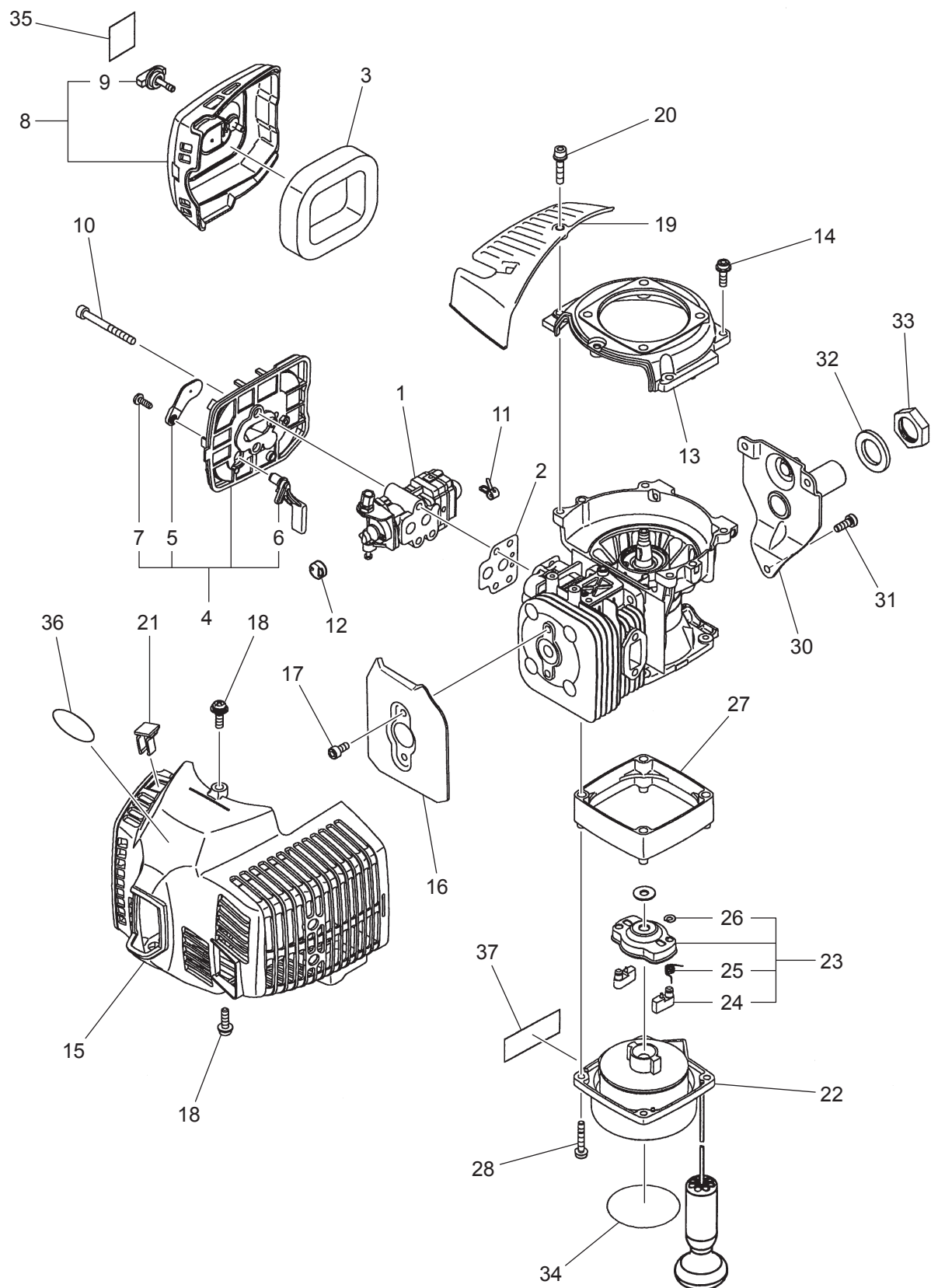
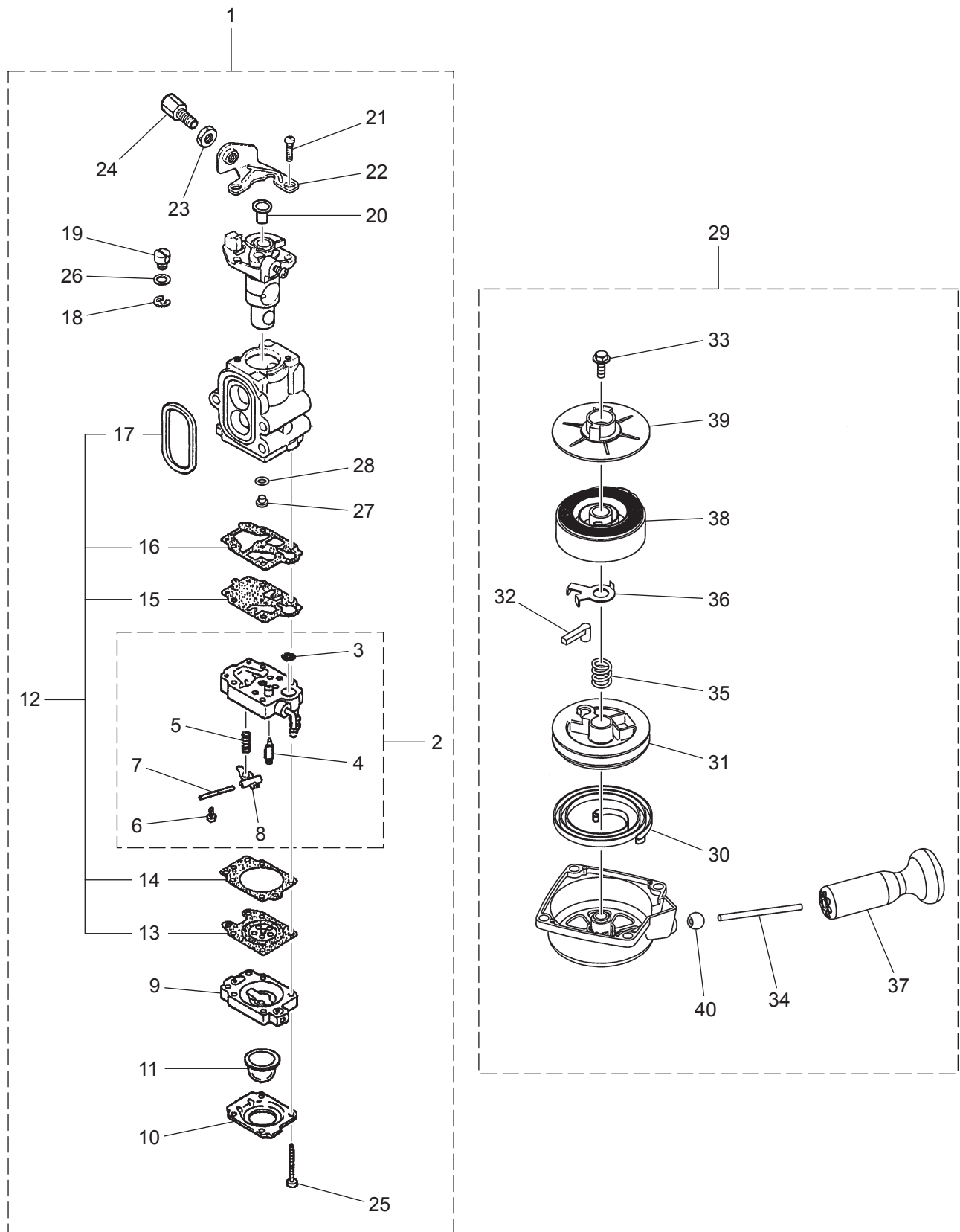
**Fig.2 ENGINE GROUP 02**

Fig. 2 BKZ315L-EZ

## ENGINE GROUP 02

| Key# | PART NUMBER  | DESCRIPTION      | Q'TY | REMARKS   |
|------|--------------|------------------|------|-----------|
| 1    | 582 52 06-01 | CARBURETTOR ASSY | 1    | WYA-308B  |
| 2    | T1590-13130  | GASKET           | 1    |           |
| 3    | T1551-82170  | ELEMENT          | 1    |           |
| 4    | 583 81 85-01 | BODY ASSY        | 1    |           |
| 5    | 4810-82130   | • PLATE.CHOKE    | 1    |           |
| 6    | T1650-82140  | • LEVER          | 1    | T4x12     |
| 7    | 581 73 62-01 | • SCREW          | 1    |           |
| 8    | 848F628320   | COVER-ASSY       | 1    |           |
| 9    | T1108-82220  | • KNOB           | 1    | M5x50-T27 |
| 10   | 4820-15310   | SCREW            | 2    |           |
| 11   | 6086-85470   | CLIP             | 1    | M5x16-T27 |
| 12   | 1601-81810   | HUB CAP          | 1    |           |
| 13   | 848F6253A0   | COVER.FAN        | 1    |           |
| 14   | 4820-85510   | BOLT             | 3    |           |
| 15   | 848F6231A1   | COVER            | 1    |           |
| 16   | 575 73 09-01 | PLATE, CYLINDER  | 1    | M5x10-T27 |
| 17   | 4820-12350   | SCREW            | 2    |           |
| 18   | 574 71 08-01 | BOLT             | 2    | M5x12-T27 |
| 19   | 848F6253F0   | COVER            | 1    | M5x25-T27 |
| 20   | T4950-52540  | BOLT             | 1    |           |
| 21   | T1600-72210  | CLAMP            | 1    |           |
| 22   | 590 60 02-01 | RECOIL-A         | 1    |           |
| 23   | T1206-75201  | PULLEY-A         | 1    |           |
| 24   | T1812-75220  | • RATCHET        | 2    |           |
| 25   | T1812-75231  | • SPRING         | 2    |           |
| 26   | T1812-75240  | • RING           | 2    | M5x35-T27 |
| 27   | 848F6275W0   | SPACER.EZ        | 1    |           |
| 28   | T4960-53510  | SCREW            | 4    |           |
| 29   | 1200-51230   | WASHER           | 1    |           |
| 30   | 848F6237D0   | BRACKET          | 1    |           |
| 31   | 8488151400   | BOLT             | 3    | M5x14-T27 |
| 32   | 848EEN35A0   | WASHER           | 1    | M20       |
| 33   | T1828-85520  | NUT              | 1    |           |
| 34   | 586 07 63-31 | LABEL, RECOIL    | 1    | BKZ315EZ  |
| 35   | 1133-82060   | LABEL,CHOKE      | 1    | ZENOAH    |
| 36   | T1600-31131  | LABEL            | 1    |           |
| 37   | 586 57 20-01 | LABEL            | 1    | CAUTION   |
|      |              |                  |      |           |



**Fig. 3 BKZ315L-EZ****CARBURETOR & RECOIL STARTER**

| Key# | PART NUMBER  | DESCRIPTION        | Q'TY | REMARKS  |
|------|--------------|--------------------|------|----------|
| 1    | 582 52 06-01 | CARBURETTOR ASSY   | 1    | WYA-308B |
| 2    | 1850-81450   | • CARBURETTOR BODY | 1    |          |
| 3    | 3306-81380   | • • SCREEN         | 1    |          |
| 4    | 3356-81310   | • • VALVE.INLET    | 1    |          |
| 5    | 1850-81270   | • • SPRING         | 1    |          |
| 6    | 1850-81220   | • • SCREW          | 1    |          |
| 7    | 3310-81250   | • • PIN            | 1    |          |
| 8    | 3310-81230   | • • LEVER          | 1    |          |
| 9    | 1850-81490   | • BODY             | 1    |          |
| 10   | 1850-81520   | • COVER            | 1    |          |
| 11   | 1751-81510   | • PUMP             | 1    |          |
| 12   | 4810-06022   | • GASKET KIT       | 1    |          |
| 13   | 848HE081K0   | • • DIAPHRAGM      | 1    |          |
| 14   | 1850-81470   | • • GASKET         | 1    |          |
| 15   | 1065-81420   | • • DIAPHRAGM      | 1    |          |
| 16   | 4810-81410   | • • GASKET         | 1    |          |
| 17   | 4810-81130   | • • RING           | 1    |          |
| 18   | 1751-81130   | • RING             | 1    |          |
| 19   | 1881-81140   | • SWIVEL           | 1    |          |
| 20   | 1881-81160   | • PLUG             | 1    |          |
| 21   | 1752-81110   | • SCREW            | 2    | M6       |
| 22   | 5500-81120   | • BRACKET          | 1    |          |
| 23   | 1751-81180   | • NUT              | 1    |          |
| 24   | 1918-81170   | • SCREW            | 1    |          |
| 25   | 1850-81530   | • SCREW            | 4    |          |
| 26   | 5500-81160   | • WASHER           | 1    | #36      |
| 27   | 8488J13600   | • JET              | 1    |          |
| 28   | 1751-81240   | • O-RING           | 1    |          |
| 29   | 590 60 02-01 | RECOIL-A           | 1    |          |
| 30   | T1812-75190  | • SPRING.SPIRAL    | 1    |          |
| 31   | 590 52 44-01 | • REEL             | 1    | M5x12    |
| 32   | T1812-75140  | • RACHET           | 1    |          |
| 33   | T1812-75150  | • SCREW            | 1    |          |
| 34   | T1828-75160  | • ROPE             | 1    |          |
| 35   | T1812-75170  | • SPRING           | 1    |          |
| 36   | T1812-75181  | • RETAINER         | 1    |          |
| 37   | T1828-75311  | • KNOB             | 1    |          |
| 38   | 848G6L7532   | • HOLDER-A         | 1    |          |
| 39   | T1812-75630  | • PULLEY           | 1    |          |
| 40   | T1828-75320  | • BALL             | 1    |          |
|      |              |                    |      |          |

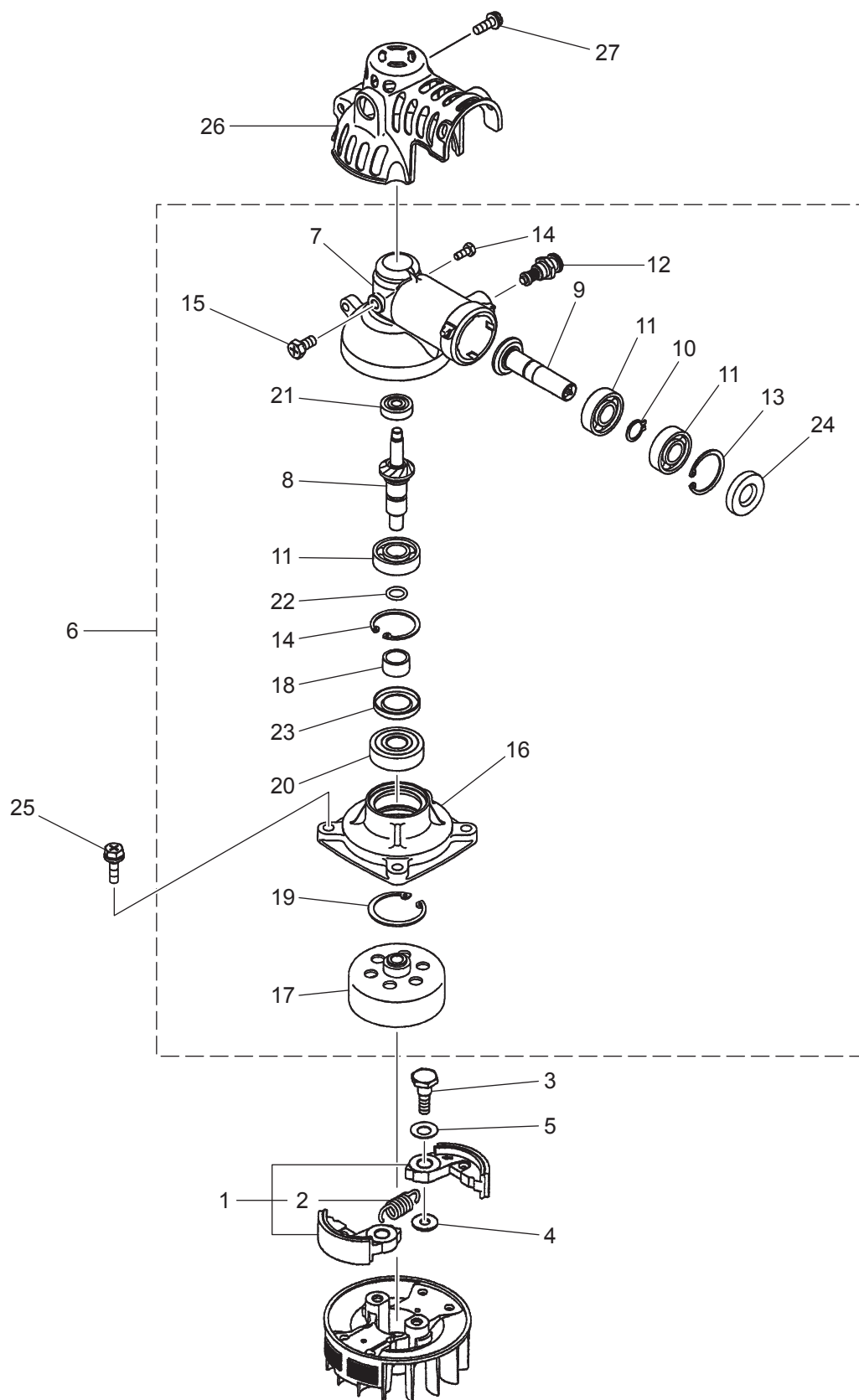
**Fig.4 ENGINE GROUP 03**



Fig. 4 BKZ315L-EZ

## ENGINE GROUP 03

| Key# | PART NUMBER  | DESCRIPTION    | Q'TY | REMARKS   |
|------|--------------|----------------|------|-----------|
| 1    | 848EA05110   | CLUTCH, ASSY   | 1    |           |
| 2    | T1700-51220  | • SPRING       | 1    |           |
| 3    | 1140-51250   | SCREW          | 2    | M6        |
| 4    | 1140-51230   | WASHER         | 2    |           |
| 5    | T1600-51240  | WASHER         | 2    |           |
| 6    | 582 58 11-02 | GEARCASE-ASSY  | 1    |           |
| 7    | 589 45 06-01 | • HOUSING GEAR | 1    |           |
| 8    | T1828-33322  | • GEAR         | 1    | 14T       |
| 9    | T1828-33333  | • PINION       | 1    | 16T       |
| 10   | 04064-01210  | • SNAP RING    | 1    |           |
| 11   | 06030-06001  | • BEARING      | 3    | 12x28     |
| 12   | 848EEN5321   | • STOPPER-COMP | 1    |           |
| 13   | 04065-02812  | • SNAP RING    | 2    |           |
| 14   | 0225-00410   | • BOLT         | 1    | M4x10     |
| 15   | 0225-00612   | • BOLT         | 1    | M6x12     |
| 16   | T1828-33412  | • HOUSING DRUM | 1    |           |
| 17   | T1828-33421  | • DRUM         | 1    |           |
| 18   | T1828-33432  | • COLLAR       | 1    |           |
| 19   | 04065-03212  | • SNAP RING    | 1    |           |
| 20   | 06032-06201  | • BEARING      | 1    | 12x32     |
| 21   | 06030-00626  | • BEARING      | 1    | 6x19      |
| 22   | 0700-011009  | • O-RING       | 1    |           |
| 23   | T1828-33360  | • SEAL         | 1    | 16x28     |
| 24   | T1828-33390  | • SEAL         | 1    | 12x28     |
| 25   | T4950-62040  | BOLT           | 4    | M6x20-T27 |
| 26   | T1828-33482  | COVER          | 1    |           |
| 27   | 8488151400   | BOLT           | 1    | M5x14-T27 |
|      |              |                |      |           |
|      |              |                |      |           |
|      |              |                |      |           |
|      |              |                |      |           |
|      |              |                |      |           |

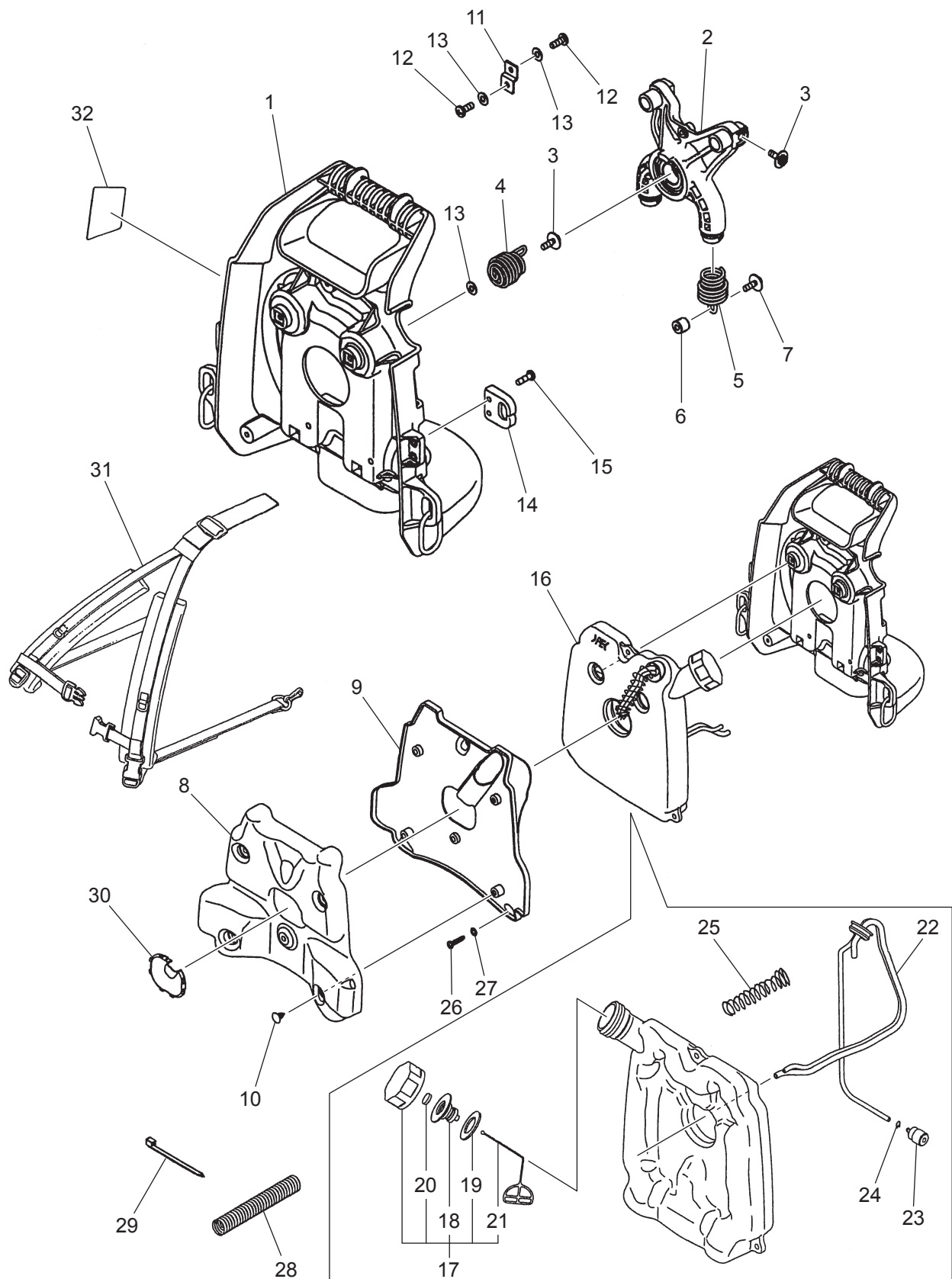
**Fig.5 FRAME GROUP**

Fig. 5 BKZ315L-EZ

## FRAME GROUP

| Key# | PART NUMBER  | DESCRIPTION  | Q'TY | REMARKS  |
|------|--------------|--------------|------|----------|
| 1    | 848EEN3510   | FRAME        | 1    | M5x16    |
| 2    | 848EEN37C0   | PLATE        | 1    |          |
| 3    | 5910-85510   | SCREW        | 4    |          |
| 4    | T1828-35223  | SPRING.UPPER | 2    |          |
| 5    | 848F6237B0   | SPRING.LOWER | 2    |          |
| 6    | 8488Y66000   | SPACER       | 2    | M5x22    |
| 7    | 1600-86120   | SCREW        | 2    |          |
| 8    | 848EEN35C0   | PAD          | 1    |          |
| 9    | 848EEN35F0   | PLATE        | 1    |          |
| 10   | 5940-14350   | CLIP         | 5    |          |
| 11   | 848F6237E0   | STOPPER      | 1    | T5x14    |
| 12   | 2630-75510   | SCREW        | 2    |          |
| 13   | 01642-20508  | WASHER       | 4    |          |
| 14   | T1828-35420  | GUIDE ROPE   | 1    |          |
| 15   | 577 16 98-01 | SCREW        | 2    |          |
| 16   | 582 68 36-01 | TANK ASSY    | 1    |          |
| 17   | T1015-85202  | • CAP-A      | 1    |          |
| 18   | 4500-85300   | • • HOLDER-A | 1    |          |
| 19   | 4500-85220   | • • PACKING  | 1    |          |
| 20   | 5601-85260   | • • FILTER   | 1    |          |
| 21   | 4820-85260   | • • STOPPER  | 1    |          |
| 22   | 848EEN8531   | • PIPE-COMP  | 1    |          |
| 23   | 503 44 32-01 | • FILTER     | 1    |          |
| 24   | 1260-85460   | • CLIP       | 1    |          |
| 25   | 8488DDW000   | • SPRING     | 1    |          |
| 26   | 2630-32610   | SCREW        | 3    | T5x25    |
| 27   | 01641-20608  | WASHER       | 3    | L160     |
| 28   | 8488H21701   | TUBE         | 1    |          |
| 29   | 08034-20414  | BAND         | 1    |          |
| 30   | T1828-35330  | COVER        | 1    |          |
| 31   | 848F623611   | BAND ASSY    | 1    | BKZ315EZ |
| 32   | 596 53 46-01 | LABEL, FLAME | 1    |          |
|      |              |              |      |          |
|      |              |              |      |          |
|      |              |              |      |          |

**Fig.6 CUTTER GROUP 01**

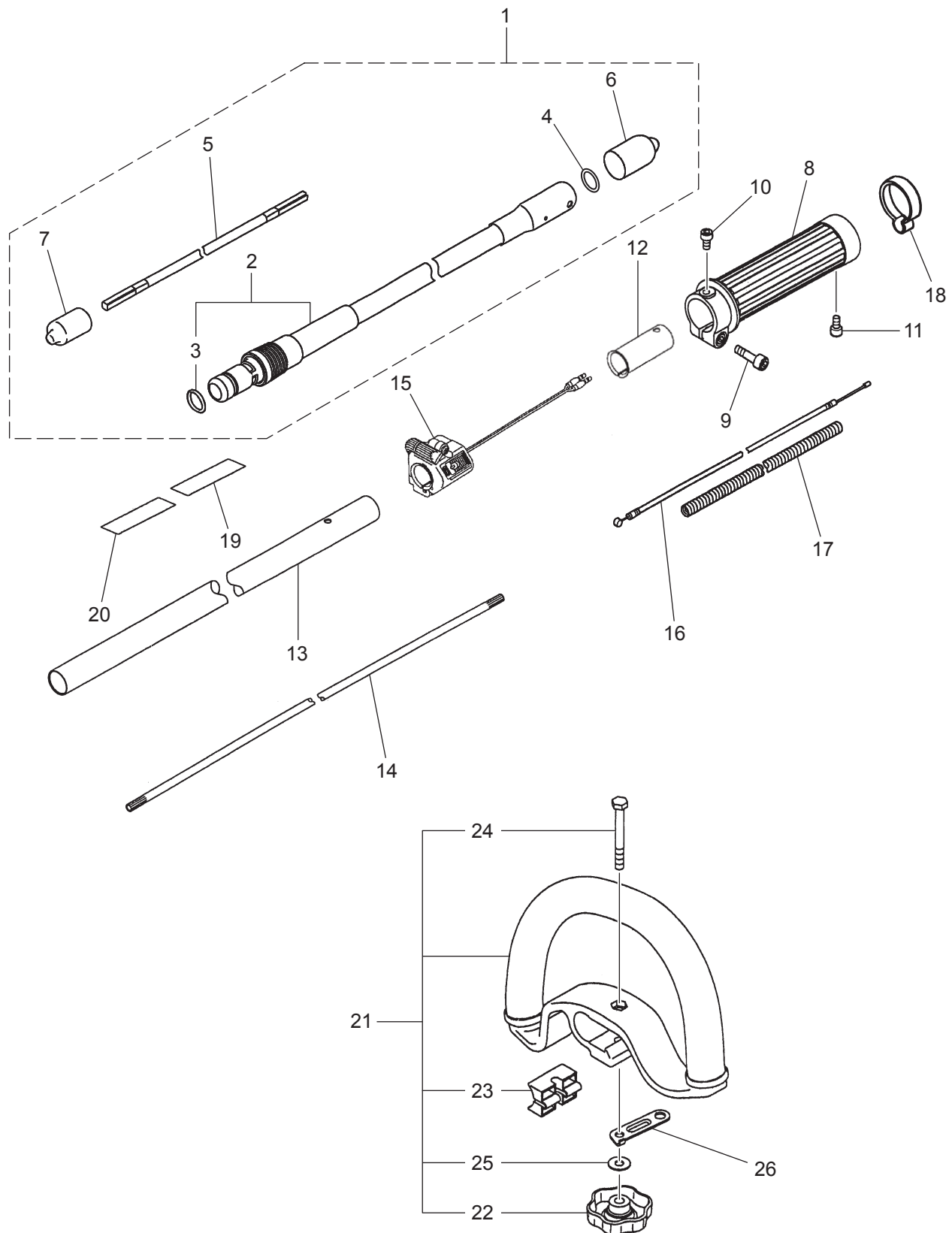
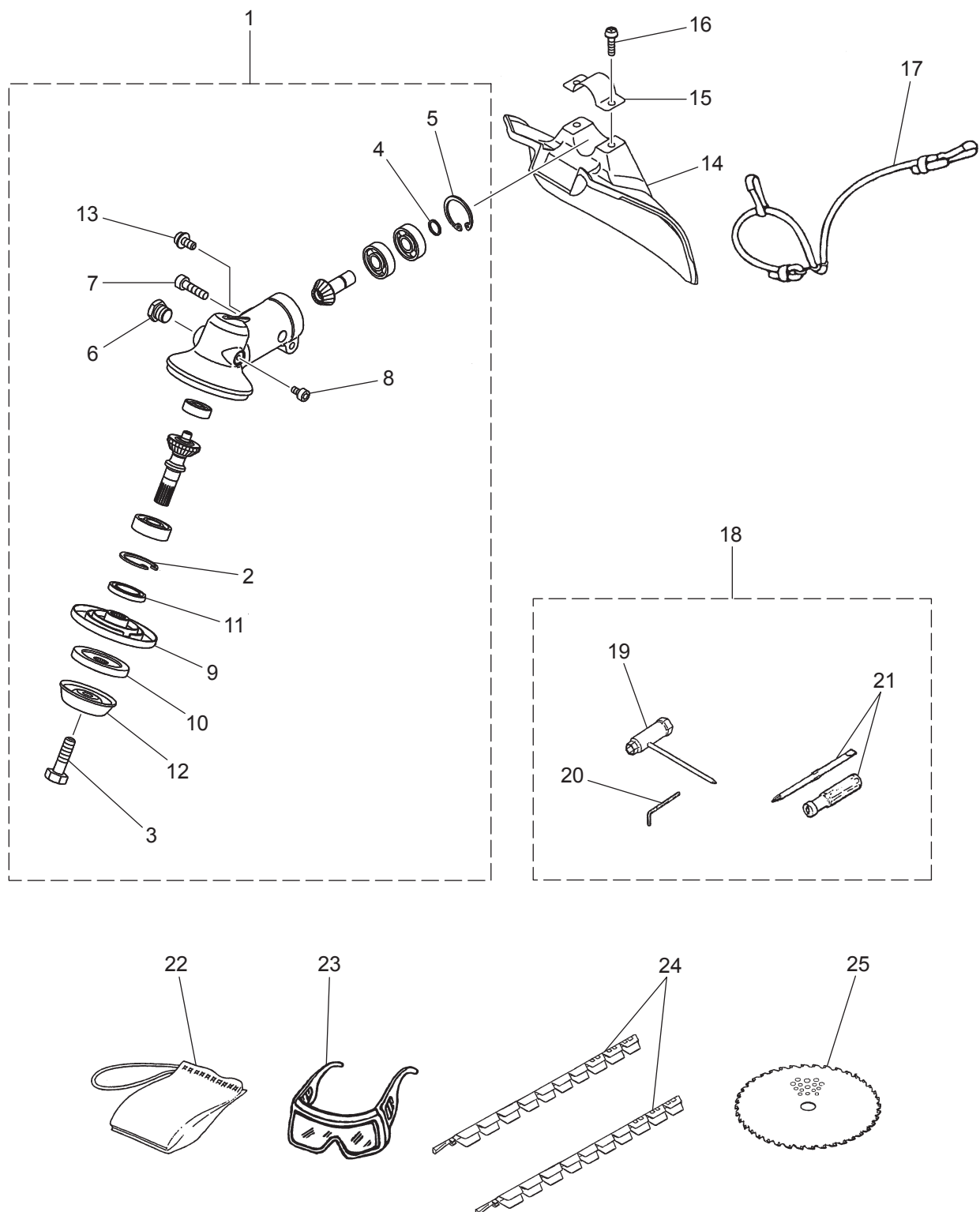


Fig.6 BKZ315L-EZ

## CUTTER GROUP 01

| Key# | PART NUMBER  | DESCRIPTION          | Q'TY | REMARKS                |
|------|--------------|----------------------|------|------------------------|
| 1    | 582 34 06-01 | SHAFT FLEXIBLE, ASSY | 1    |                        |
| 2    | 582 34 09-01 | • LINER              | 1    |                        |
| 3    | 07000-12018  | • • O-RING           | 1    |                        |
| 4    | 582 38 35-03 | • RING               | 1    |                        |
| 5    | 582 34 10-01 | • SHAFT.FLEX         | 1    |                        |
| 6    | 582 36 95-01 | • COVER              | 1    |                        |
| 7    | 6193-21130   | • COVER.LINER        | 1    |                        |
| 8    | 579 42 73-01 | JOINT, COMP          | 1    |                        |
| 9    | 577 94 20-01 | BOLT                 | 1    | M5x20-T27              |
| 10   | 8488150900   | BOLT                 | 1    | M5x9-T27               |
| 11   | 8488051000   | SCREW                | 1    | M5x10-T27              |
| 12   | 848BC033A0   | SPACER               | 1    |                        |
| 13   | T3541-11300  | PIPE-COMP            | 1    | L1380 $\phi$ 24        |
| 14   | 578 87 87-01 | SHAFT                | 1    | L1412 SPLINE<br>7TEETH |
| 15   | 596 53 42-01 | LEVER ASSY           | 1    |                        |
| 16   | 587 83 18-11 | CABLE COMP           | 1    | 1180-67                |
| 17   | 580 61 18-02 | TUBE                 | 1    | L1030                  |
| 18   | 582 51 16-01 | CLAMP                | 3    |                        |
| 19   | 578 79 50-85 | LABEL,NAME           | 1    | BKZ315EZ               |
| 20   | 8488X10040   | LABEL, CAUTION       | 1    |                        |
| 21   | T3541-14000  | HANDLE-A             | 1    |                        |
| 22   | T3541-14341  | • GRIP               | 1    |                        |
| 23   | T3541-14351  | • SPACER             | 1    |                        |
| 24   | 0224-00655   | • BOLT               | 1    | M6x55                  |
| 25   | 3238-15230   | • WASHER             | 1    |                        |
| 26   | T3541-17110  | PLATE                | 1    |                        |
|      |              |                      |      |                        |
|      |              |                      |      |                        |
|      |              |                      |      |                        |
|      |              |                      |      |                        |
|      |              |                      |      |                        |



## CUTTER GROUP 02

---

14