



PARTS LIST

HEDGE TRIMMERS

CHT220-60

(ENGINE : G20LH)

NOTE :

1. Use HUSQVARNA ZENOAH genuine parts specified in the parts list for repair and/or replacement.
2. HUSQVARNA ZENOAH does not warrant the machines, those which have been damaged by the use of any parts other than those specified by the company.
3. When placing orders of parts for repair and/or replacement, check if the model name and the serial number are suitable to those specified in the parts list, then use parts number described in the parts list.
4. The contents described in the parts list may change due to improvement.
5. The parts for the machine shall be supplied within ten (10) years after the machine is discontinued. [It is possible that some specific parts may be subject to change of their delivery term and list price within the limit of ten (10) years after the machine is discontinued. And it is also possible that some parts may be available even after the limit of ten (10) years.]

APPLICABLE SERIAL NUMBERS:

CHT220-60 : 20202900001 and up

July 2020

A HT220-75, CHT220-60
STARTER

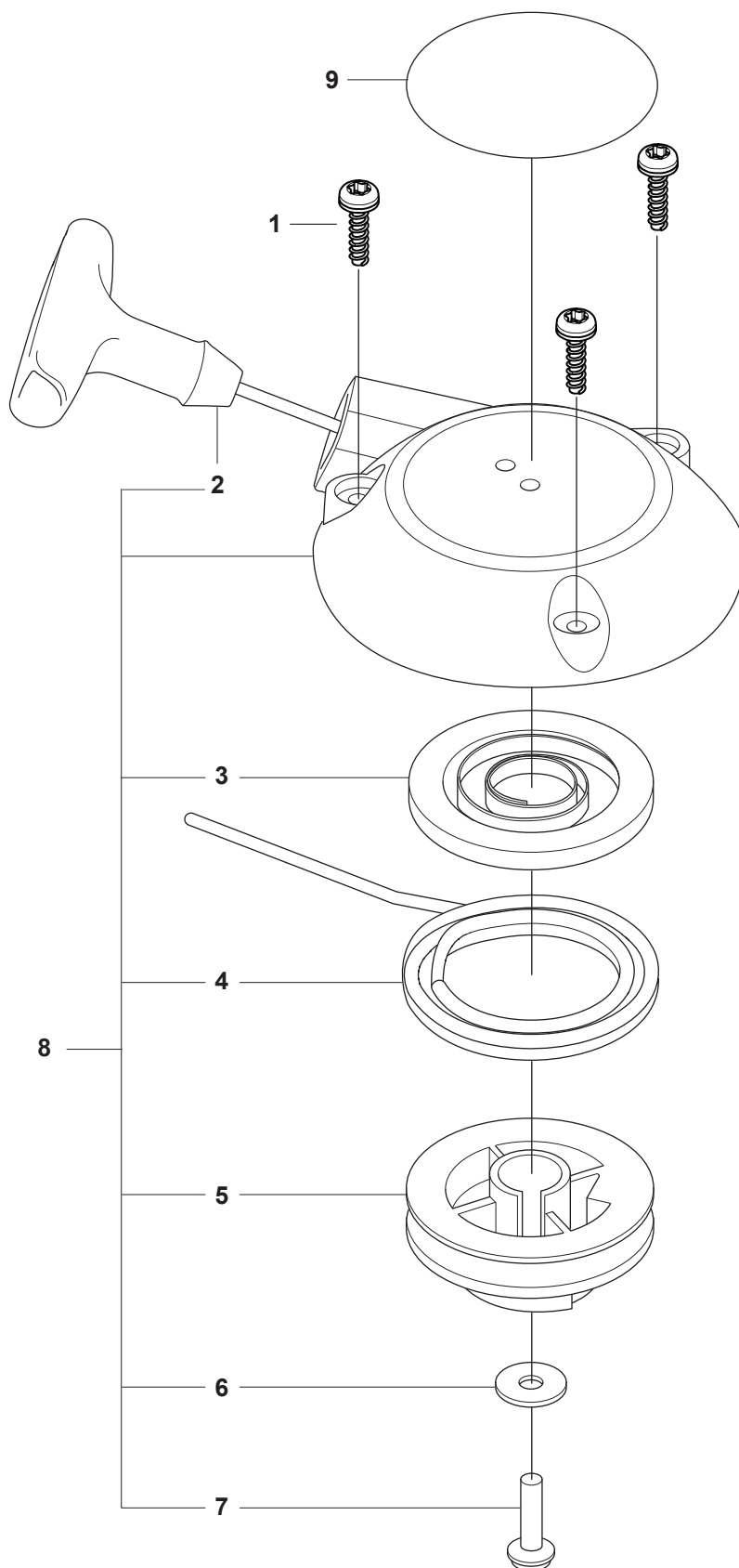


Fig. A STARTER CHT220-60

[illegible]

B CHT220-60
CYLINDER COVER

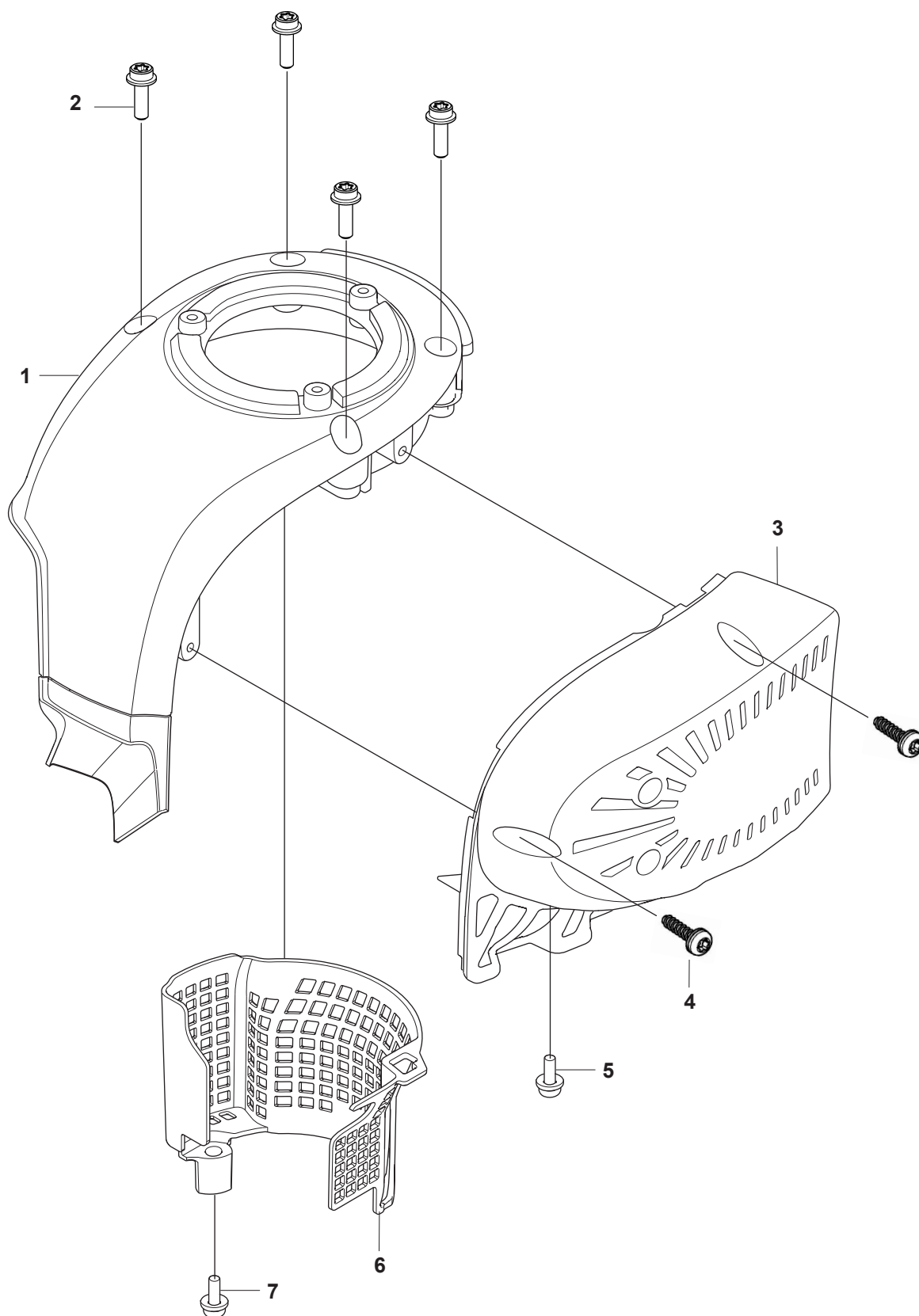


Fig. B CYLINDER COVER CHT220-60

[illegible]

C HT220-75, CHT220-60
CARBURETOR & AIRFILTER

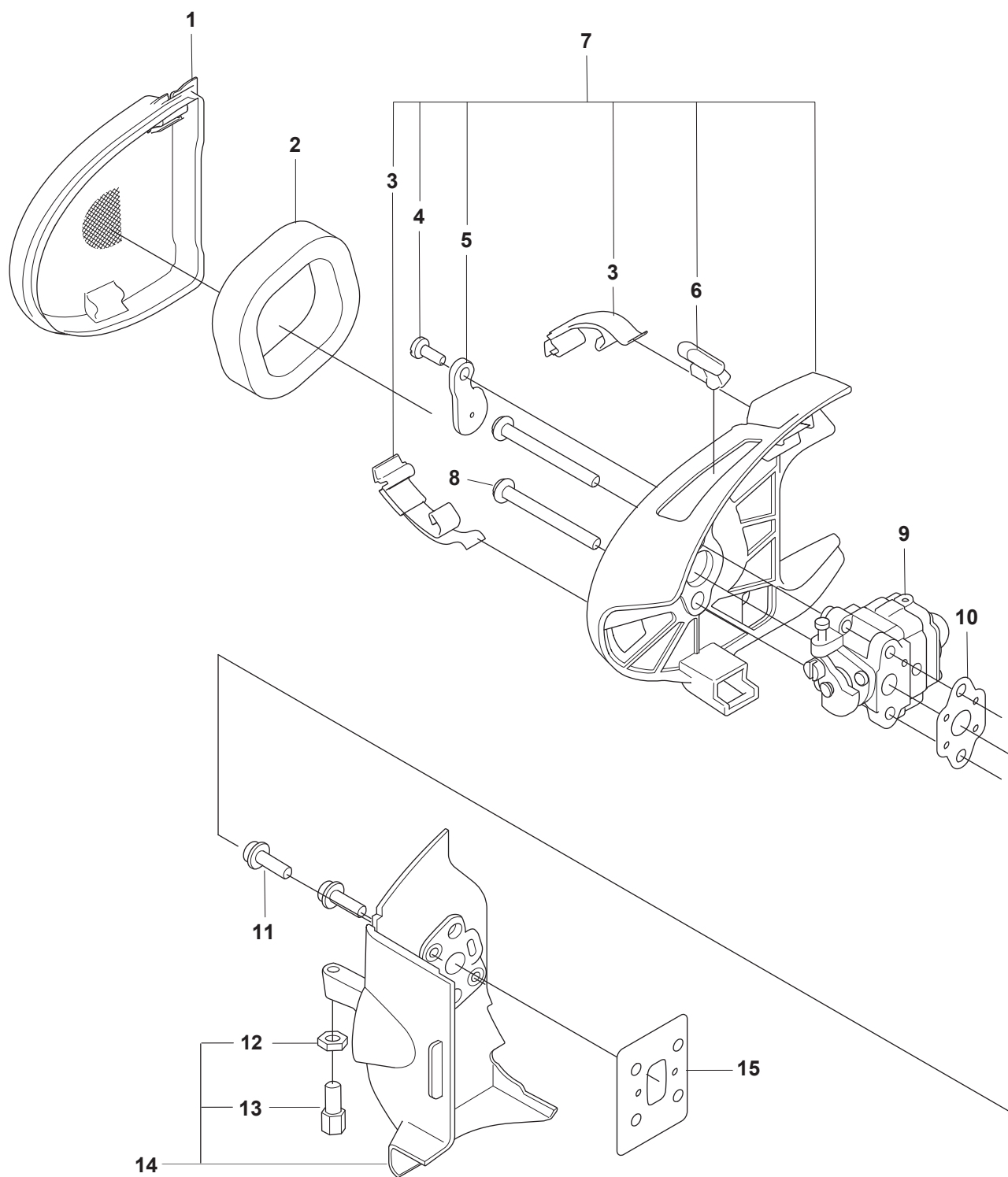


Fig. C CARBURETTOR & AIRFILTER HT220-75, CHT220-60

[illegible]

D HT220-75, CHT220-60
FUEL TANK

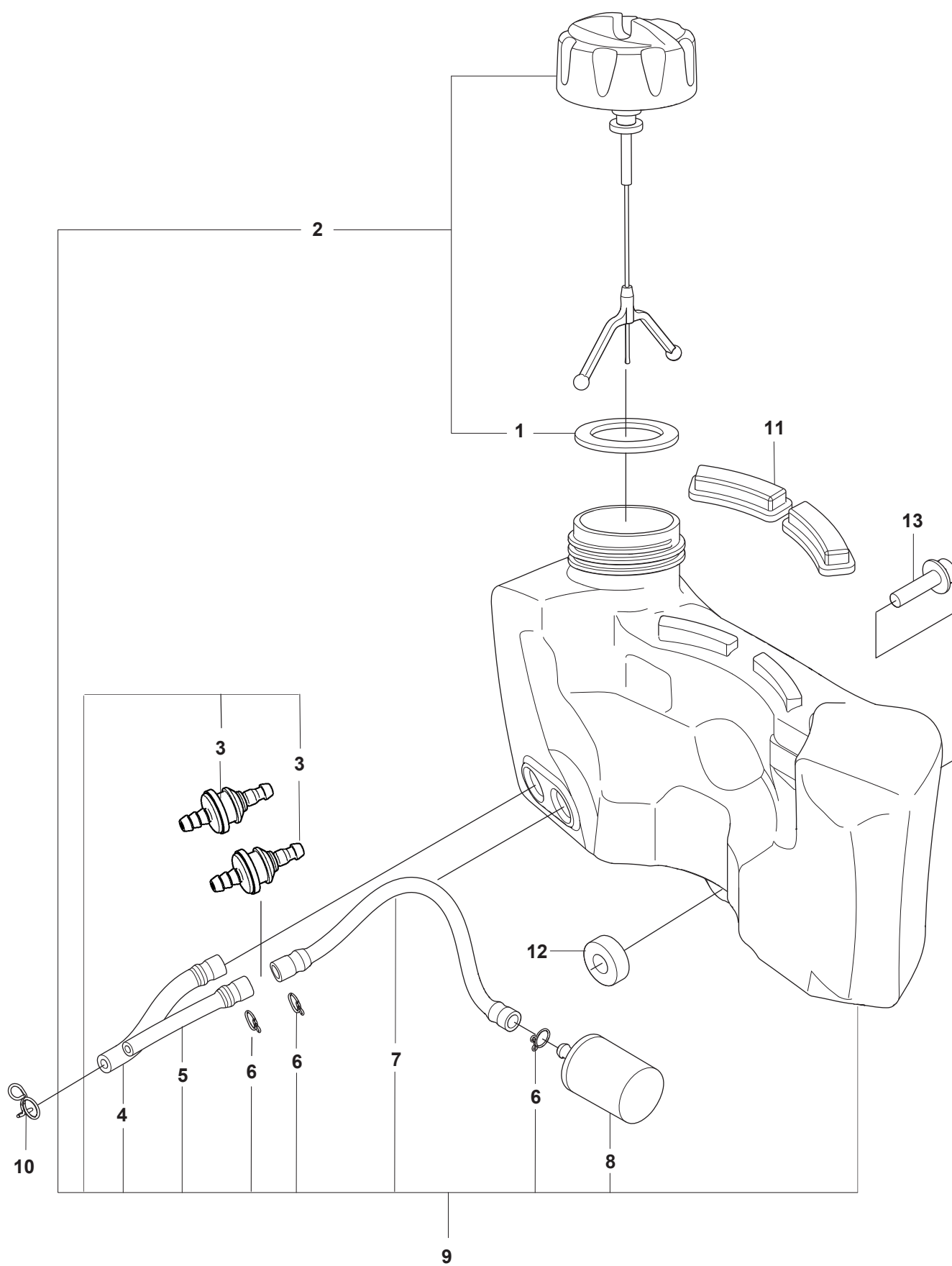


Fig. D FUEL TANK HT220-75, CHT220-60

[illegible]

E

IGNITION SYSTEM

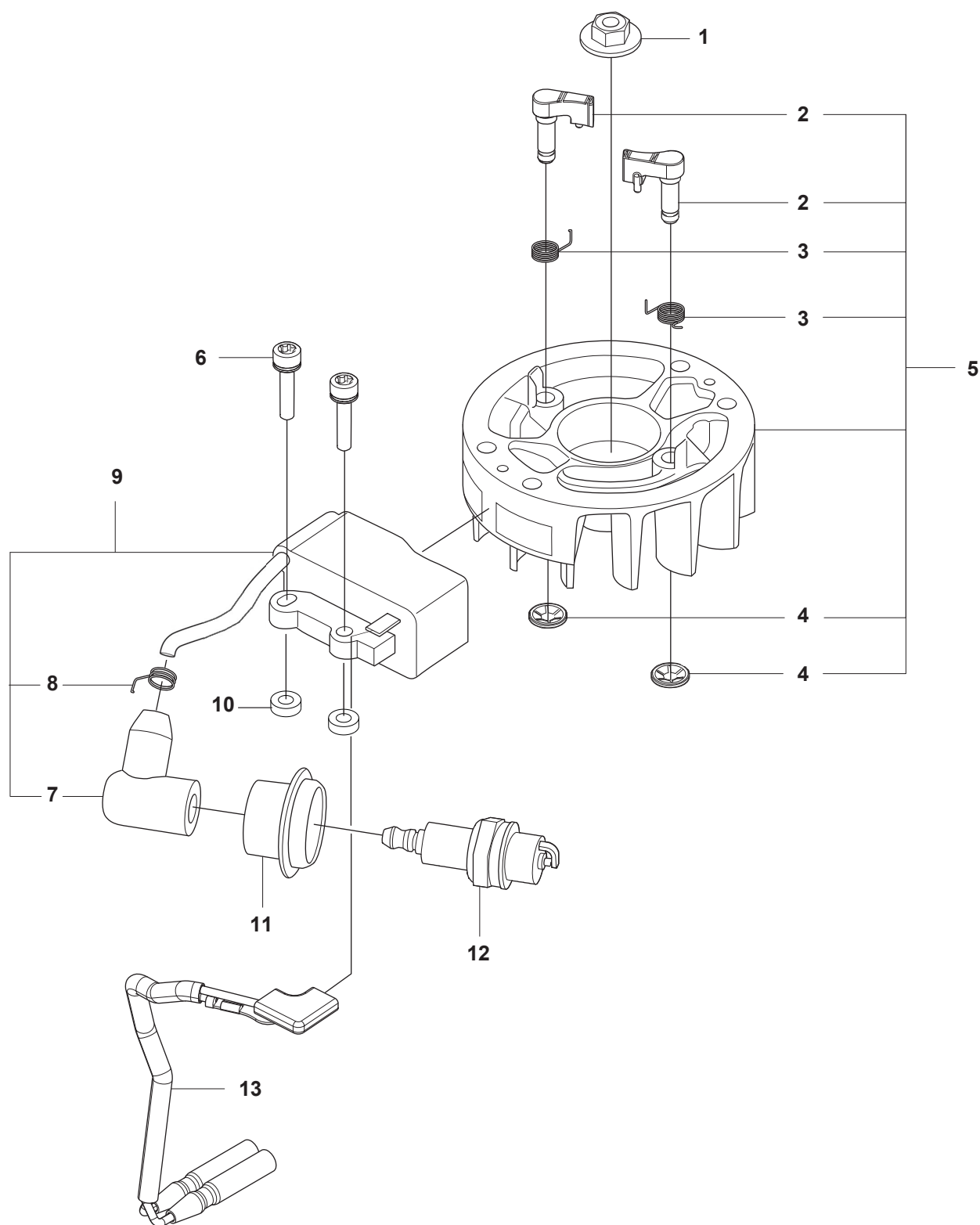


Fig. E IGNITION SYSTEM HT220-75, CHT220-60

[illegible]

F HT220-75, CHT220-60
MUFFLER

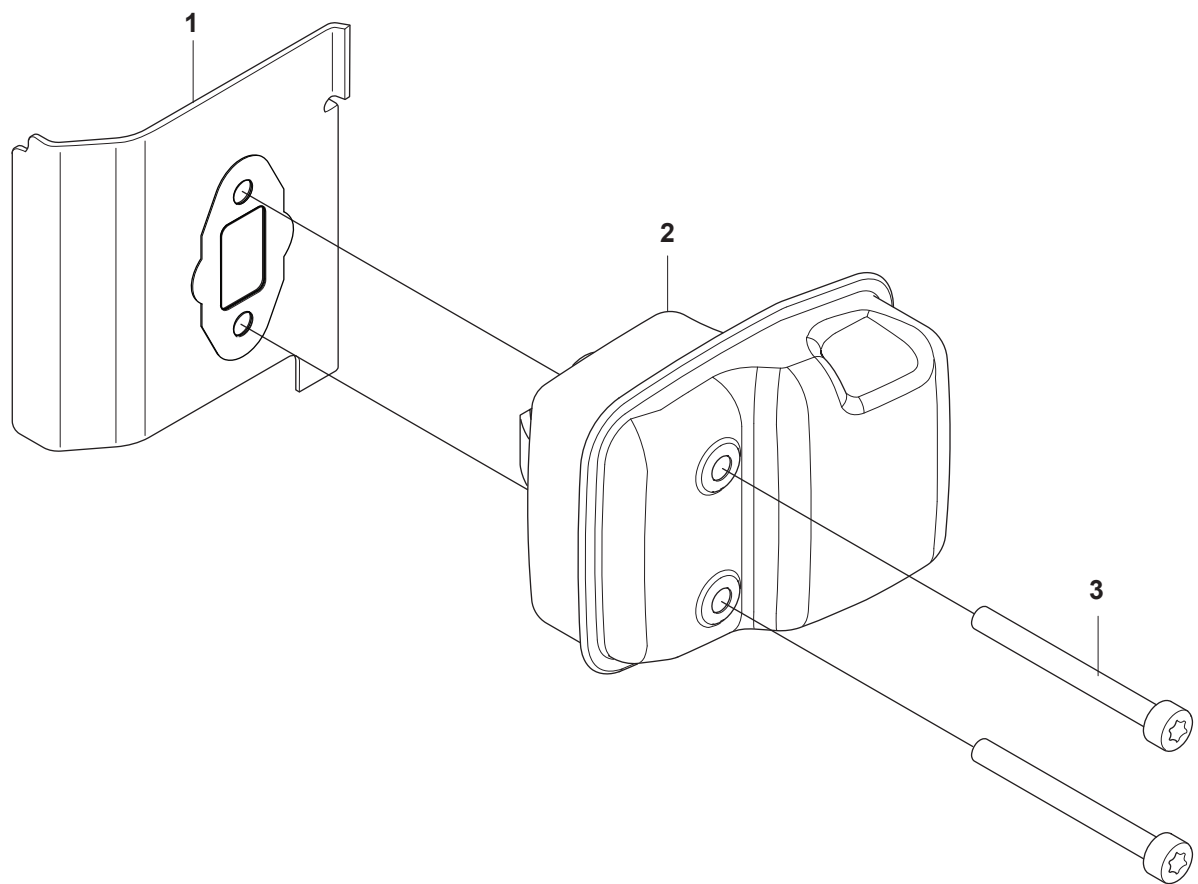


Fig. F MUFLER HT220-75, CHT220-60

[illegible]

G HT220-75, CHT220-60
CYLINDER & PISTON

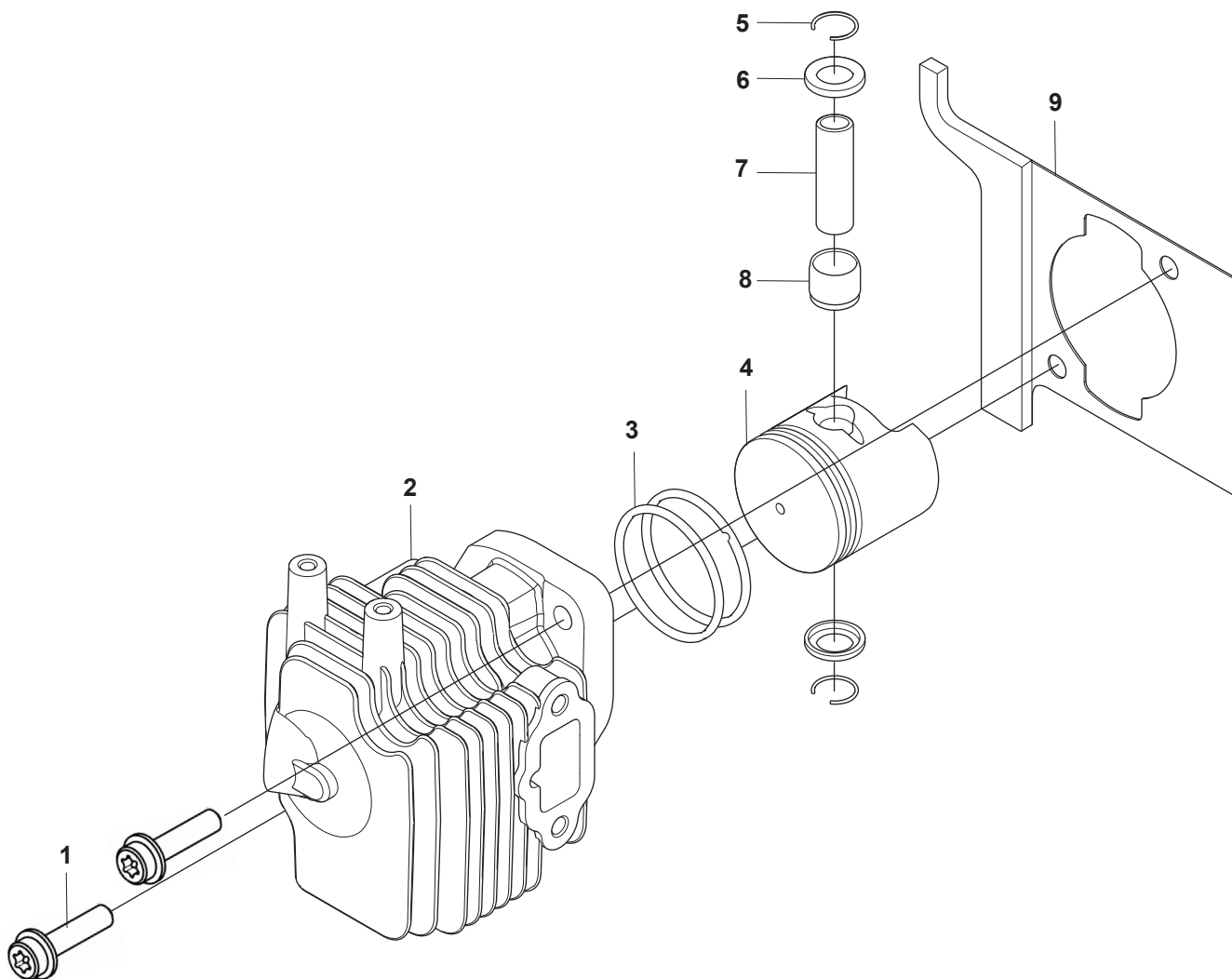


Fig. G CYLINDER & PISTON HT220-75, CHT220-60

[illegible]

H HT220-75, CHT220-60
CRANKCASE

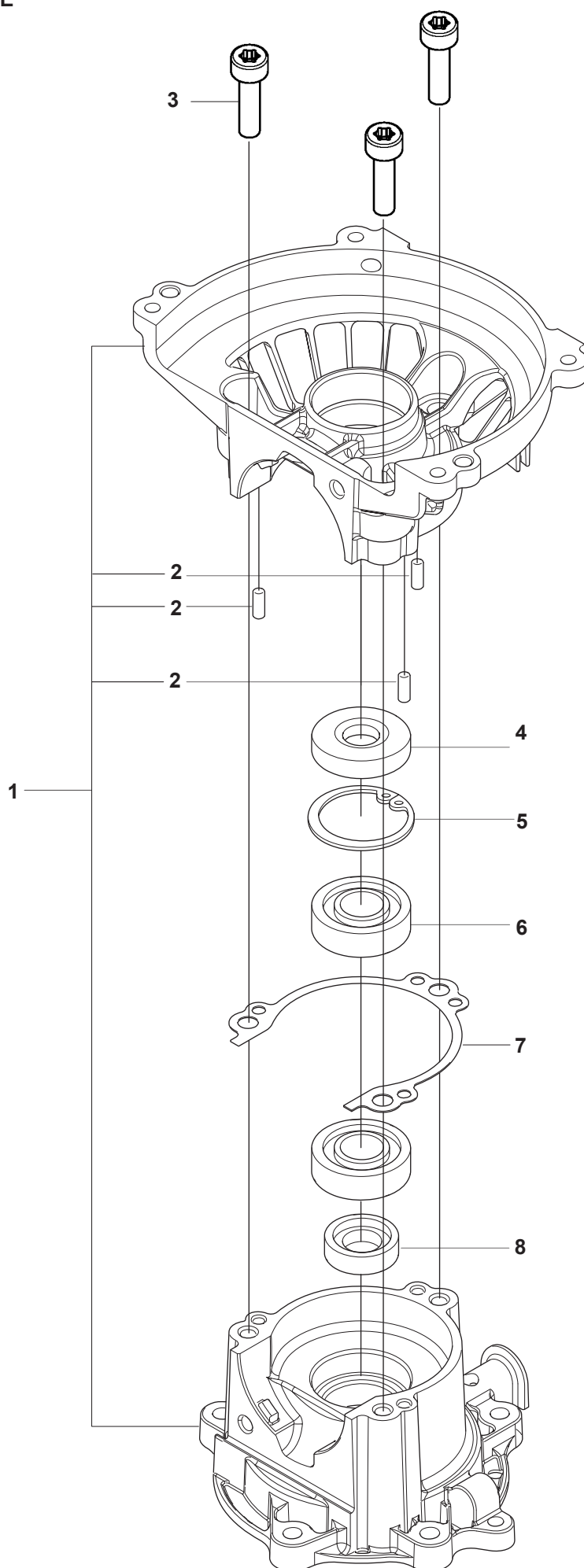


Fig. H CRANKCASE HT220-75, CHT220-60

[illegible]

J HT220-75, CHT220-60
CRANKSHAFT&CLUTCH

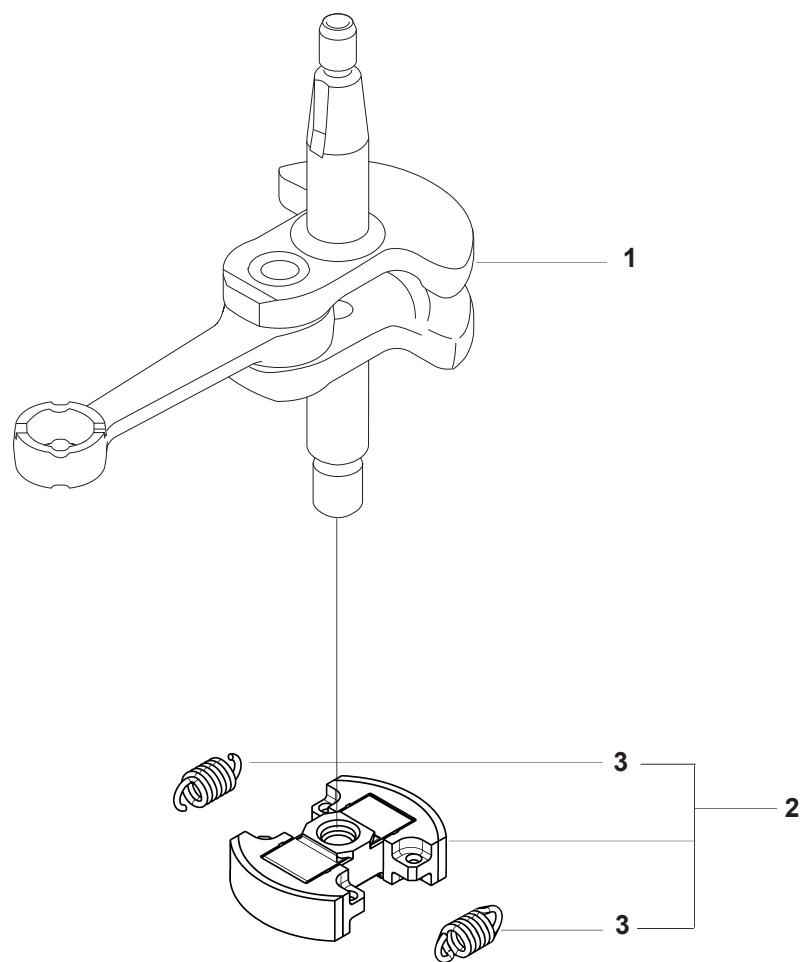
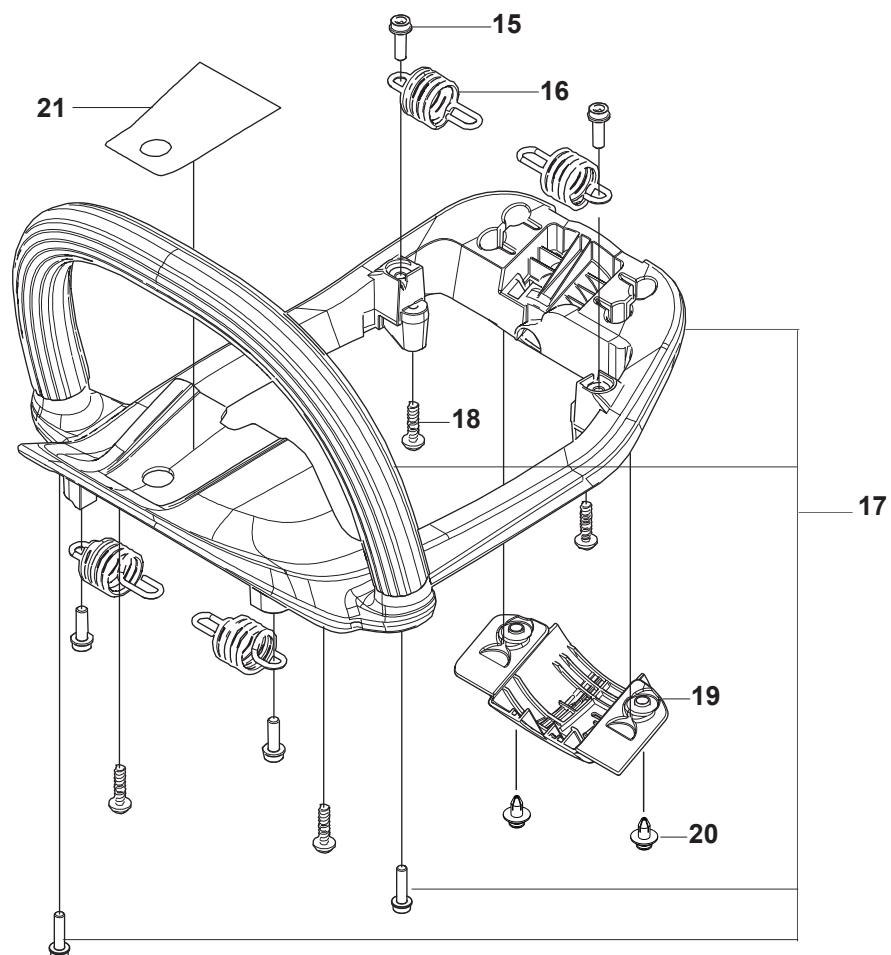
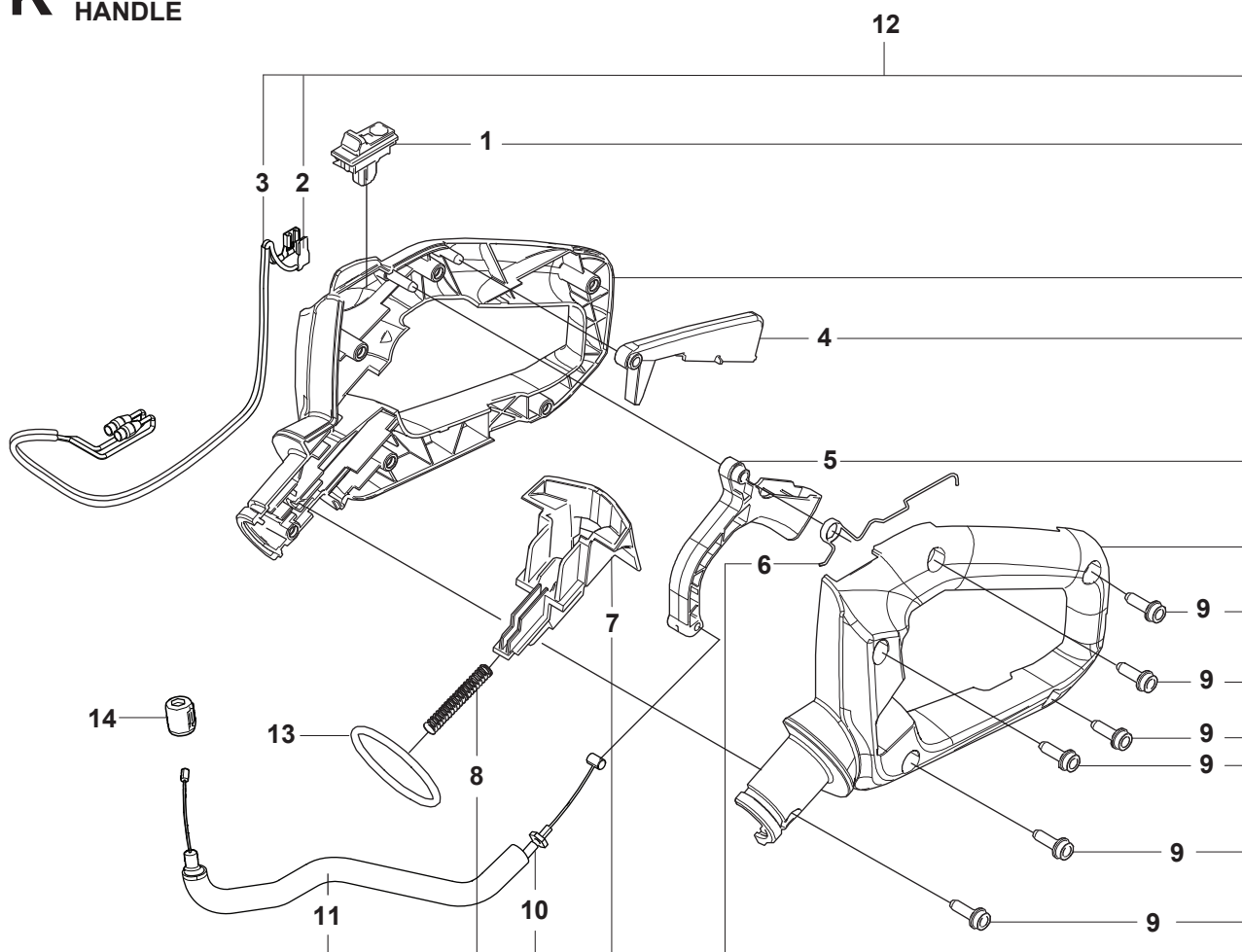


Fig. J CRANKSHAFT & CLUTCH HT220-75, CHT220-60

[illegible]

K CHT220-60 HANDLE



Key#	PART NUMBER	DESCRIPTION	Q'TY	REMARKS
1	537 41 90-01	• SWITCH	1	
2	590 71 49-01	• CORD, COMP	1	
3	590 71 49-02	• CORD, COMP	1	
4	580 27 68-02	• THROTTLE LOCKOUT	1	
5	590 05 76-02	• THROTTLE CONTROL	1	
6	590 68 66-01	• SPRING, HANDLE	1	
7	590 05 77-02	• LOCKING BUTTON	1	
8	504 08 98-02	• SPRING	1	
9	573 92 58-01	• SCREW	6	
10	590 71 48-01	• THROTTLE CABLE, ASSY	1	
11	581 41 04-04	• TUBE	1	
12	596 72 94-01	REAR HANDLE ASSY, HD	1	
13	575 23 20-02	O-RING	1	
14	577 13 32-01	JOINT	1	
15	577 94 23-01	BOLT	4	
16	590 64 77-01	SPRING, ANTI-VIBRATION	4	
17	597 02 41-02	FRONT HANDLE ASSY, KIT	1	
18	8488251911	SCREW	4	
19	590 34 05-02	PROTECTION	1	
20	1480-74711	CLIP	2	
21	596 62 49-02	DECAL, CAUTION CHT	1	

L CHT220-60
GEARBOX

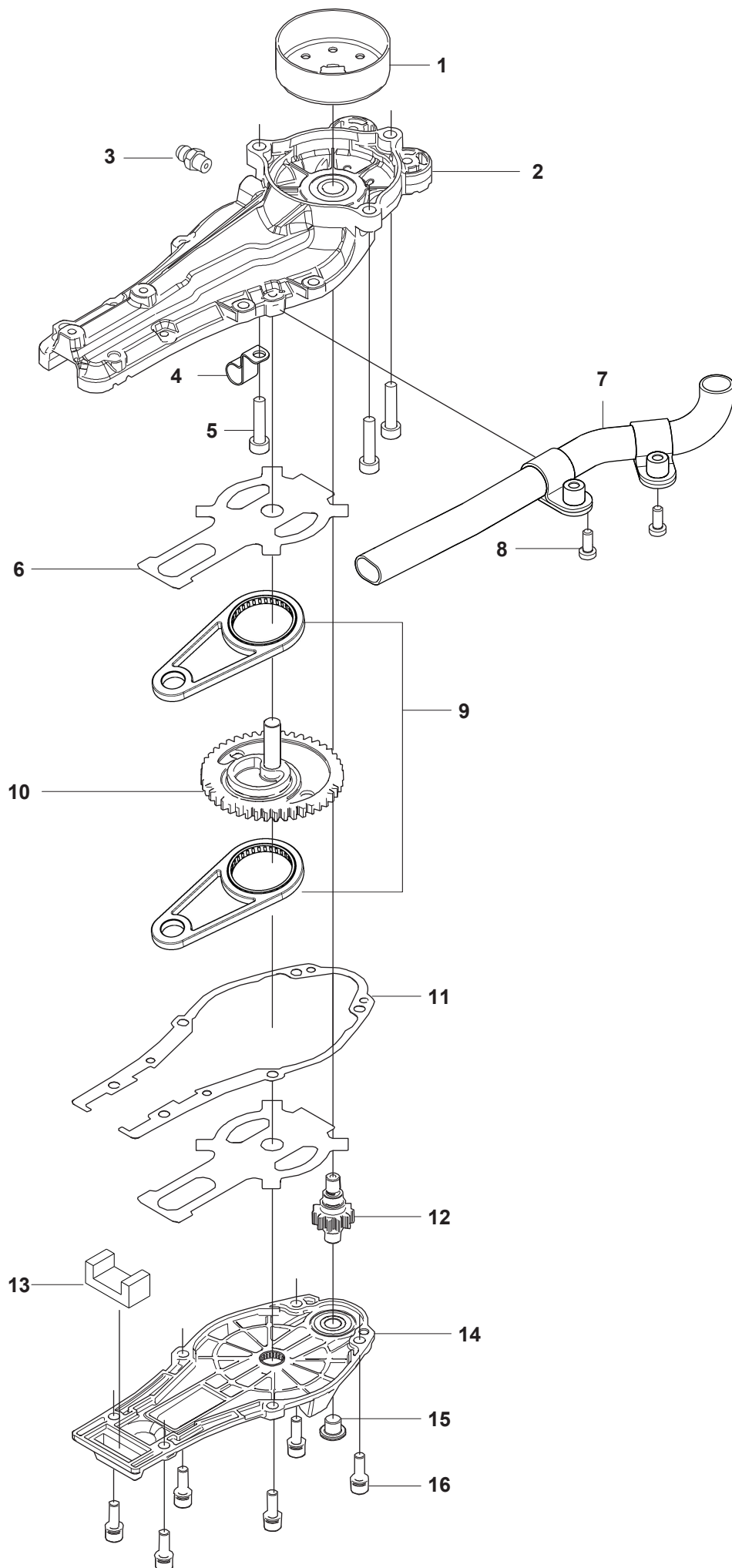


Fig. L GEARBOX CHT220-60

[illegible]

M CHT220-60
CUTTING EQUIPMENT

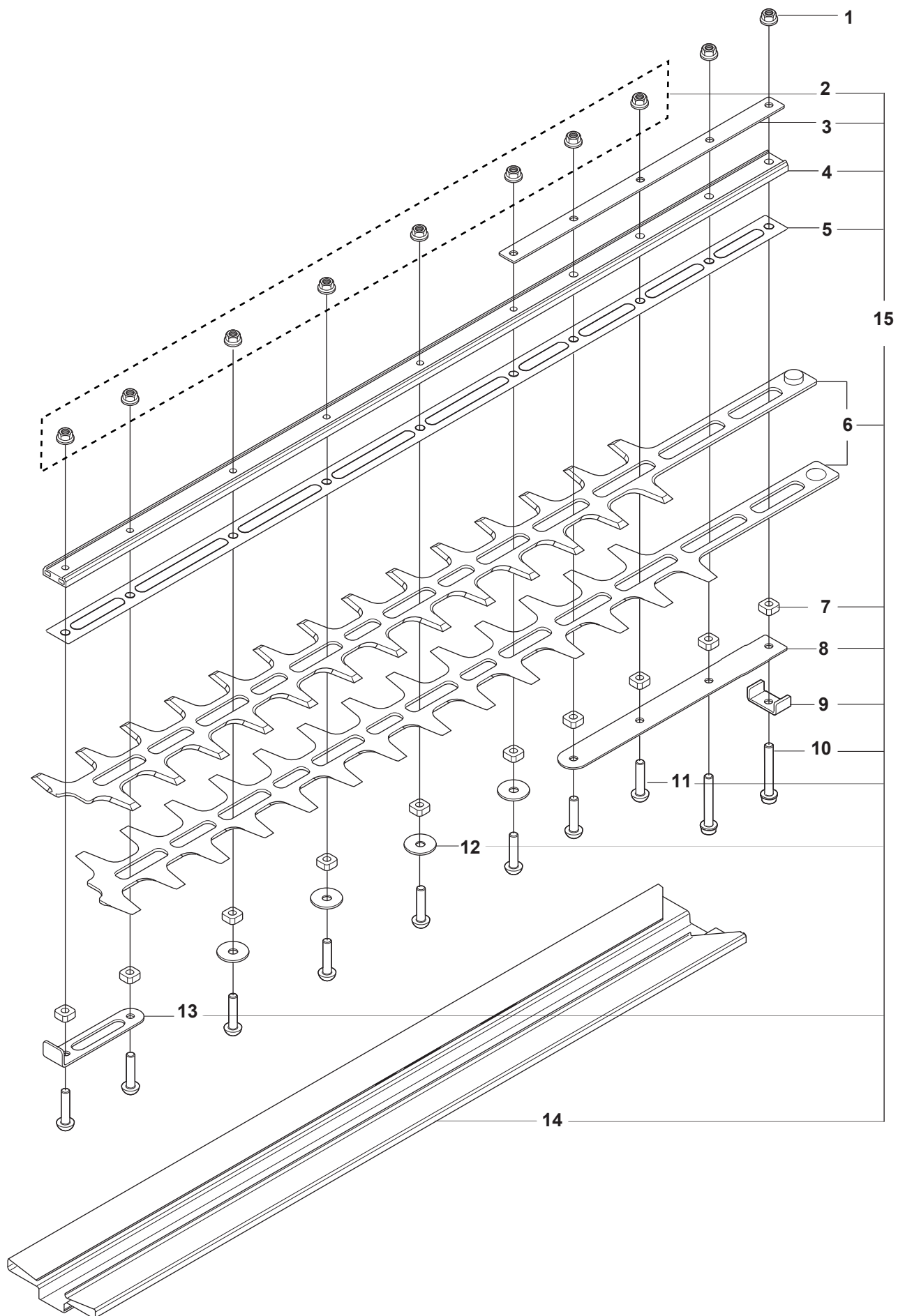


Fig. M CUTTING EQUIPMENT CHT220-60

[illegible]

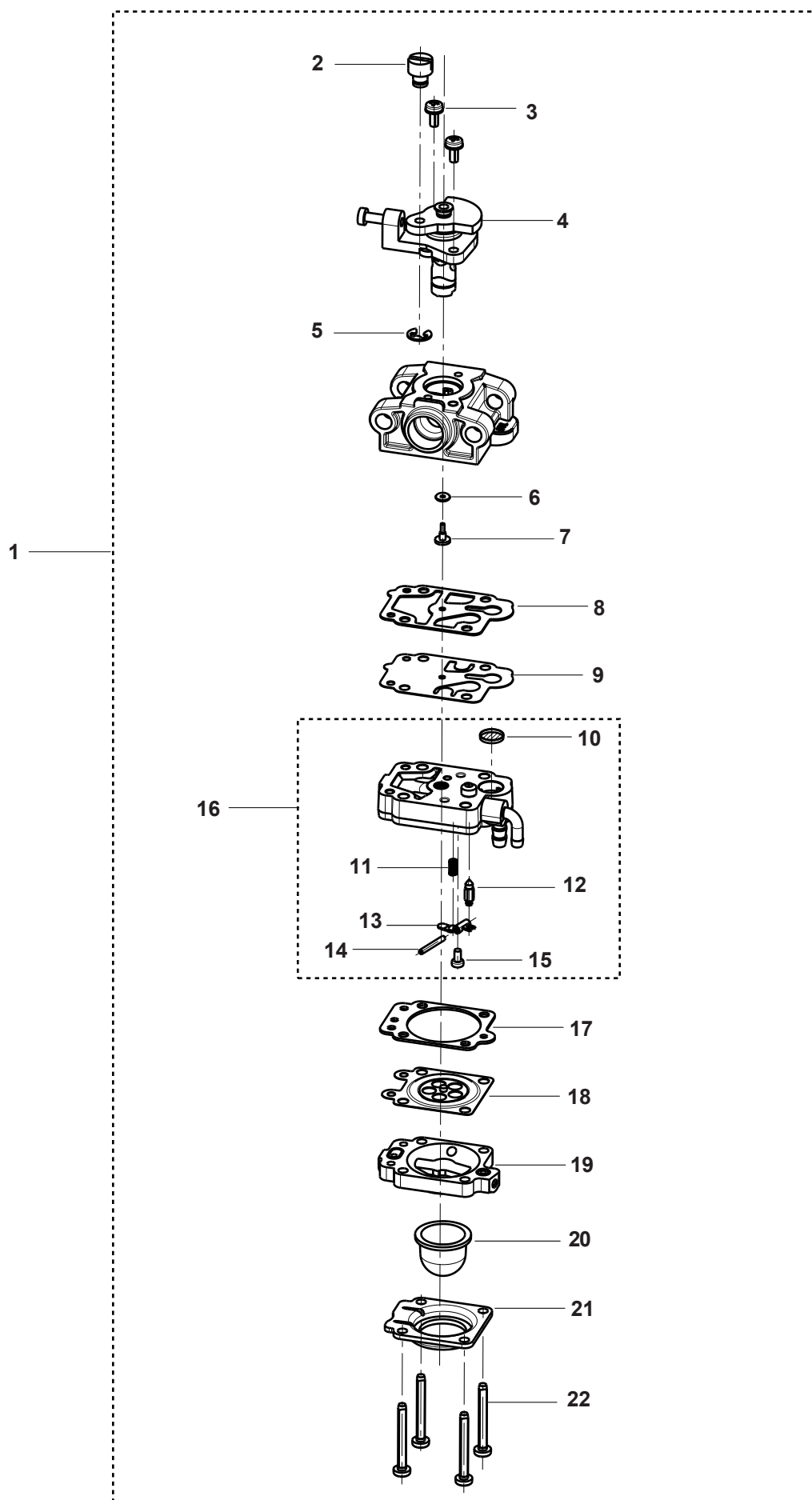
N**HT220-75, CHT220-60
CARBURETOR****Walbro WYL-190B**

Fig. N CARURETOR HT220-75, CHT220-60

Key#	PART NUMBER	DESCRIPTION	Q'TY	REMARKS
1	848E0A8102	CARBURETOR ASSY	1	WYL-190B
2	1881-81140	• SWIVEL	1	
3	5850-81110	• SCREW	2	
4	T1659-81150	• VALVE	1	
5	1751-81130	• RETAINER RING	1	
6	1751-81240	• O-RING	1	
7	5502-81250	• JET	1	#39
8	1065-81410	• GASKET	1	
9	1065-81420	• DIAPHRAGM	1	
10	3306-81380	• • SCREEN	1	
11	1794-81270	• • SPRING	1	
12	3356-81310	• • VALVE, INLET	1	
13	3310-81230	• • LEVER	1	
14	3310-81250	• • PIN	1	
15	1850-81220	• • SCREW	1	
16	1794-81450	• BODY, A	1	
17	1850-81470	• GASKET	1	
18	3310-81260	• DIAPHRAGM	1	
19	1850-81490	• BODY	1	
20	1751-81510	• PUMP	1	
21	1850-81520	• COVER	1	
22	1850-81530	• SCREW	4	

P HT220-75, CHT220-60
ACCESSORIES

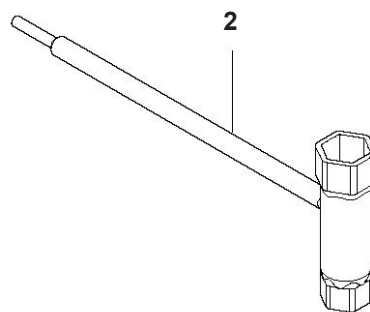
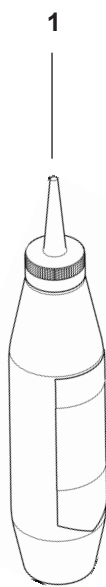


Fig. P ACCESSORIES HT220-75, CHT220-60

[illegible]