



# PARTS LIST

## HEDGE TRIMMERS

### HT220-75

( ENGINE : G20LH )

**NOTE :**

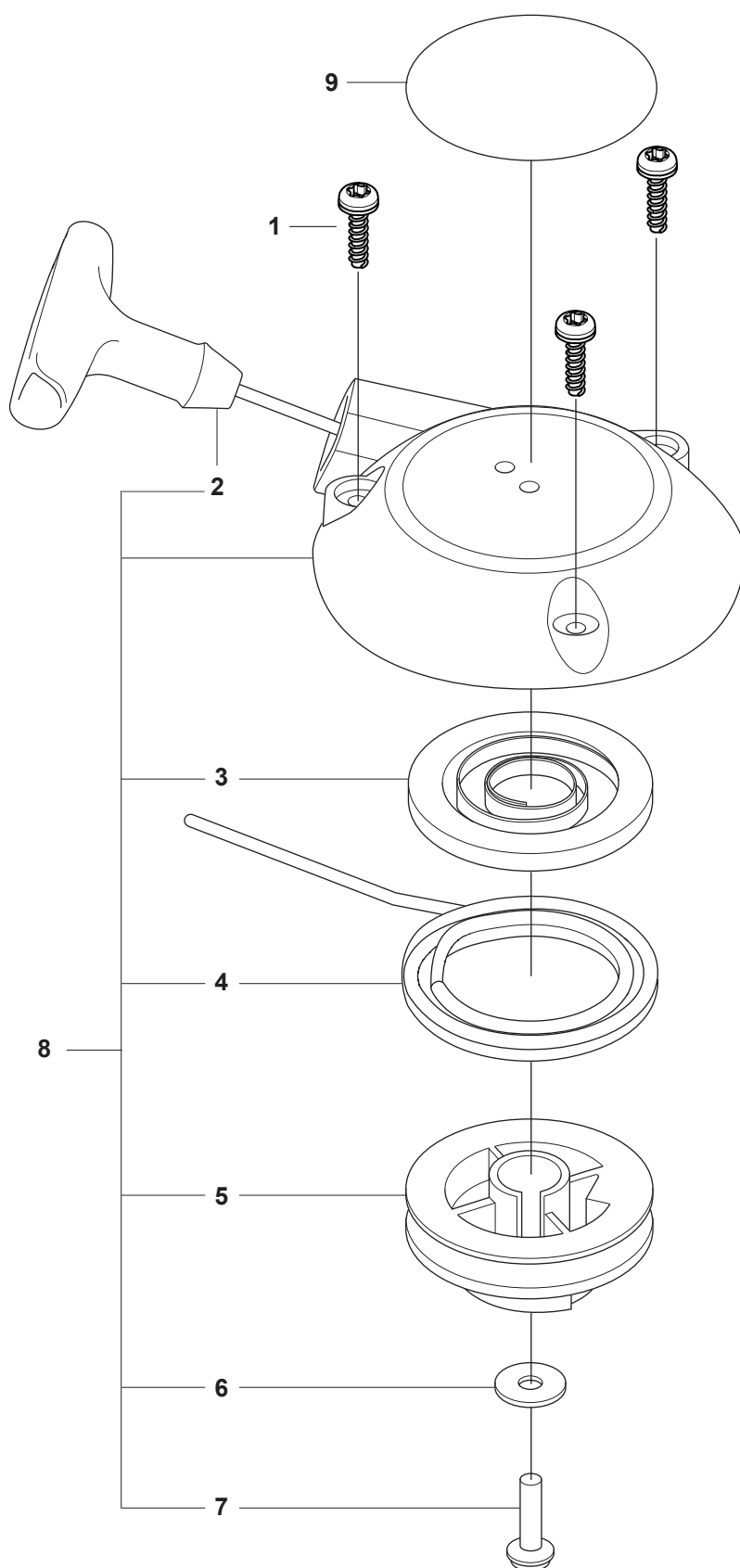
1. Use HUSQVARNA ZENOAH genuine parts specified in the parts list for repair and/or replacement.
2. HUSQVARNA ZENOAH does not warrant the machines, those which have been damaged by the use of any parts other than those specified by the company.
3. When placing orders of parts for repair and/or replacement, check if the model name and the serial number are suitable to those specified in the parts list, then use parts number described in the parts list.
4. The contents described in the parts list may change due to improvement.
5. The parts for the machine shall be supplied within ten (10) years after the machine is discontinued. [It is possible that some specific parts may be subject to change of their delivery term and list price within the limit of ten (10) years after the machine is discontinued. And it is also possible that some parts may be available even after the limit of ten (10) years.]

APPLICABLE SERIAL NUMBERS:

HT220-75 : 20202900001 and up

July 2020

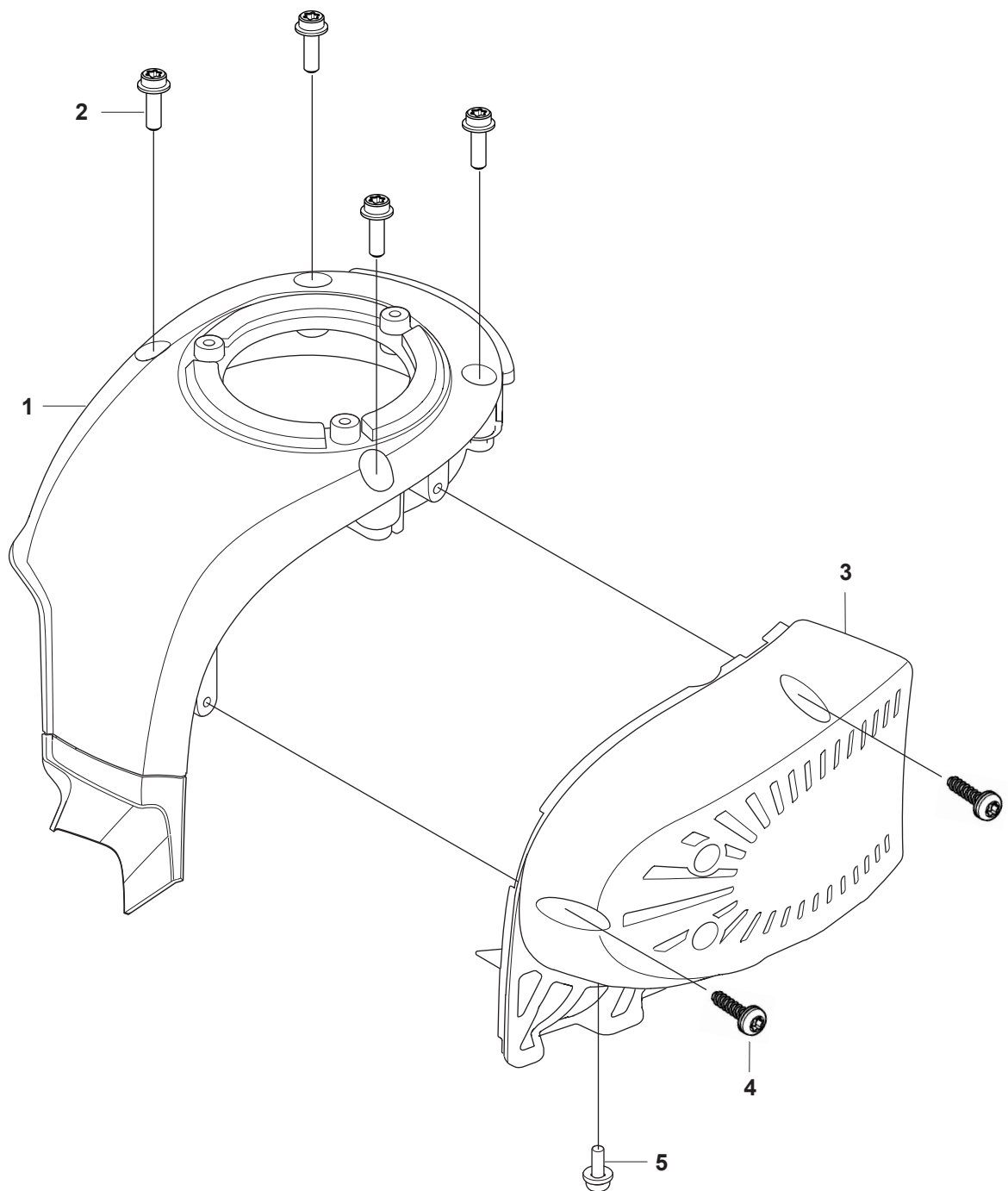
**A** HT220-75, CHT220-60  
STARTER



**Fig. A STARTER HT220-75**

[illegible]

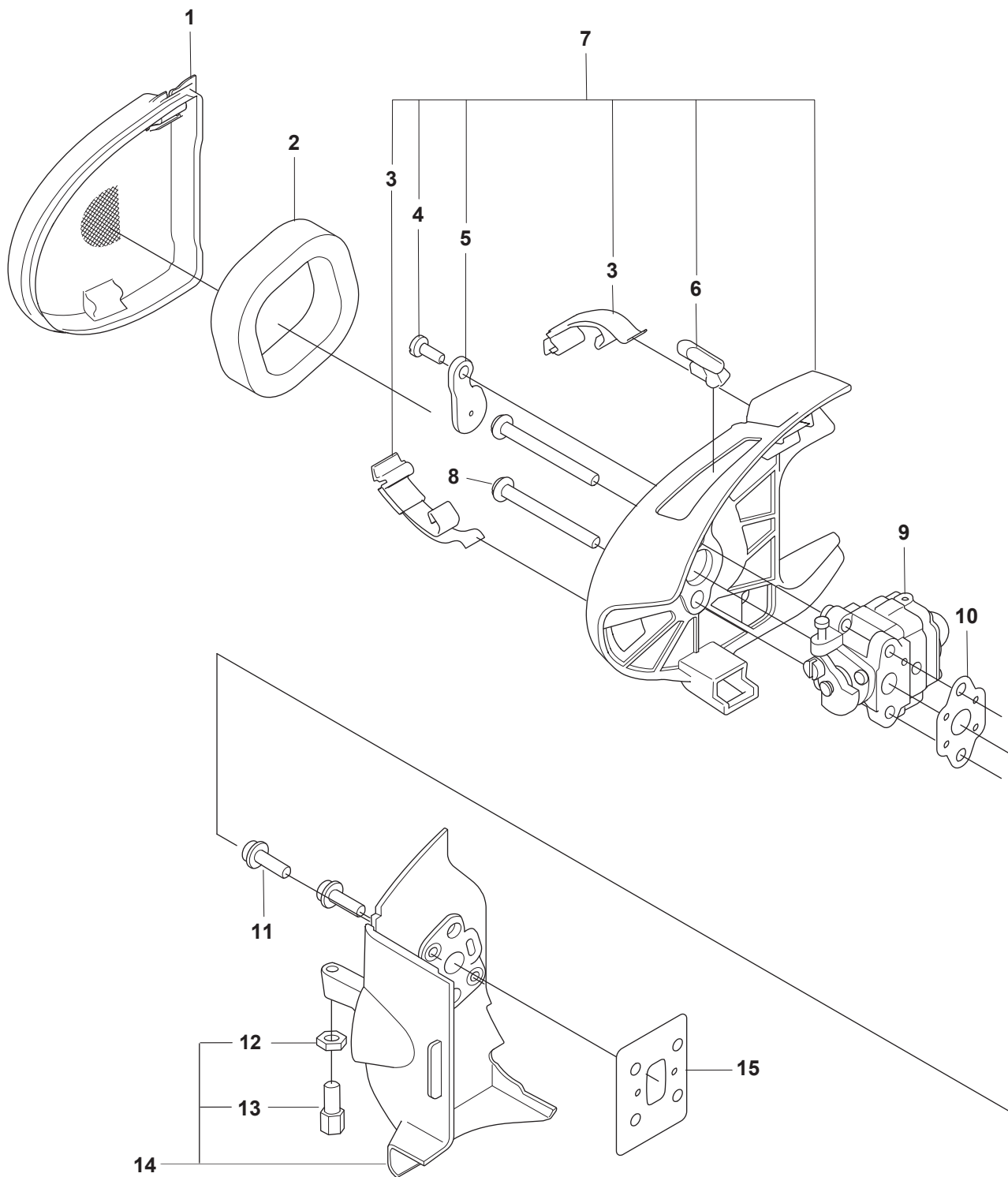
**B** HT220-75  
CYLINDER COVER



**Fig. B CYLINDER COVER HT220-75**

[illegible]

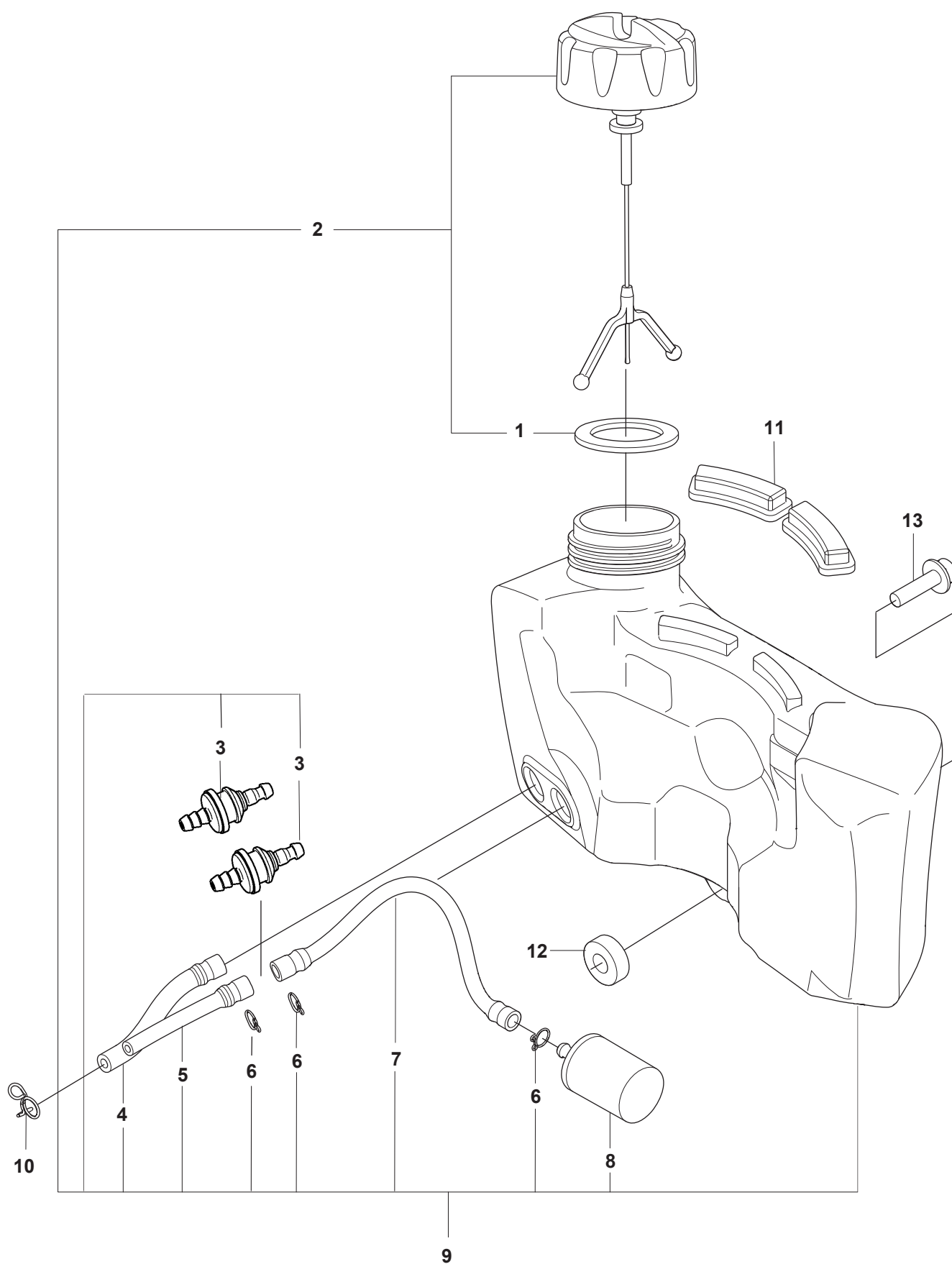
**C** HT220-75, CHT220-60  
CARBURETOR & AIRFILTER



**Fig. C CARBURETTOR & AIRFILTER HT220-75, CHT220-60**

[illegible]

**D** HT220-75, CHT220-60  
FUEL TANK



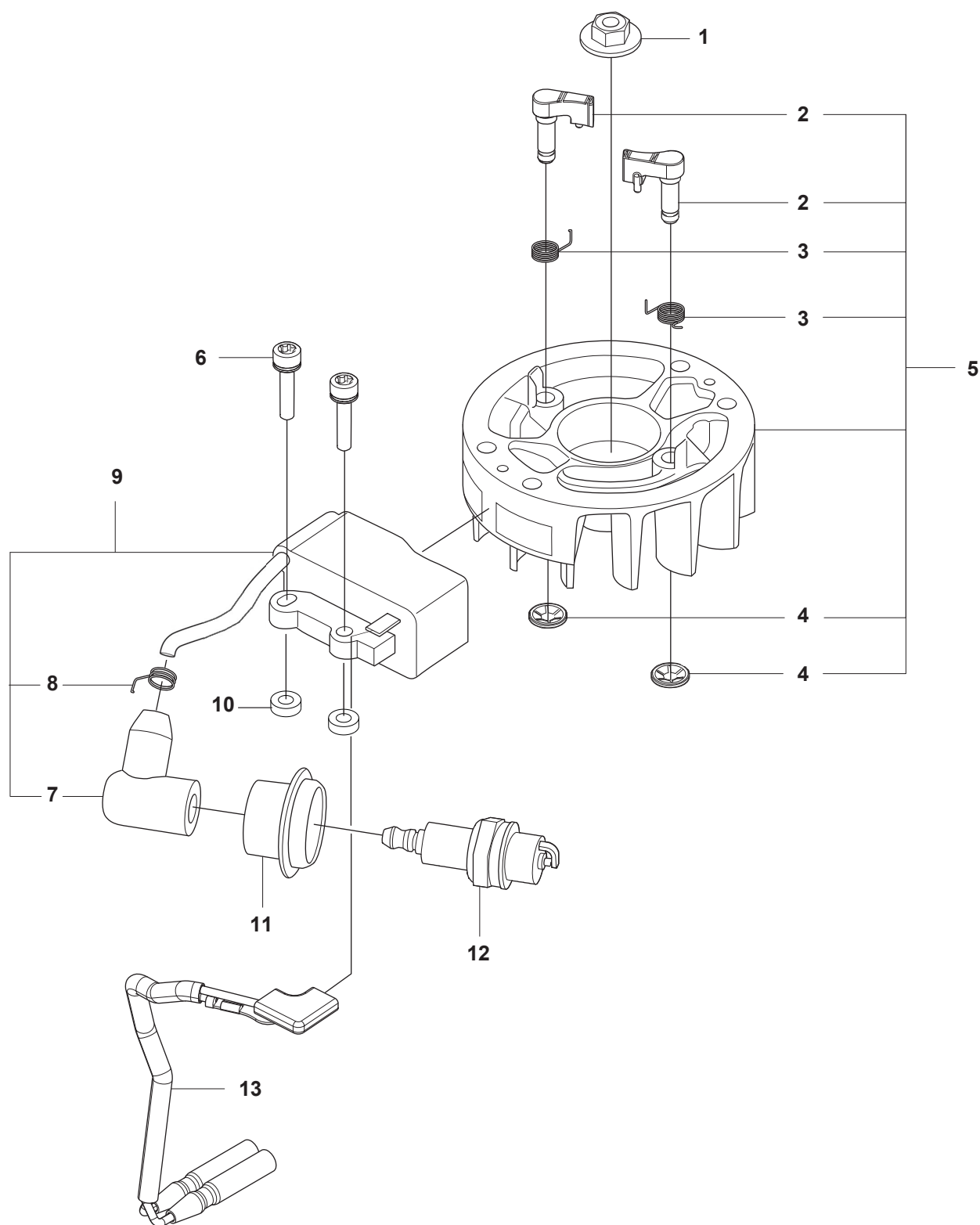


**Fig. D FUEL TANK HT220-75, CHT220-60**

[illegible]

# E

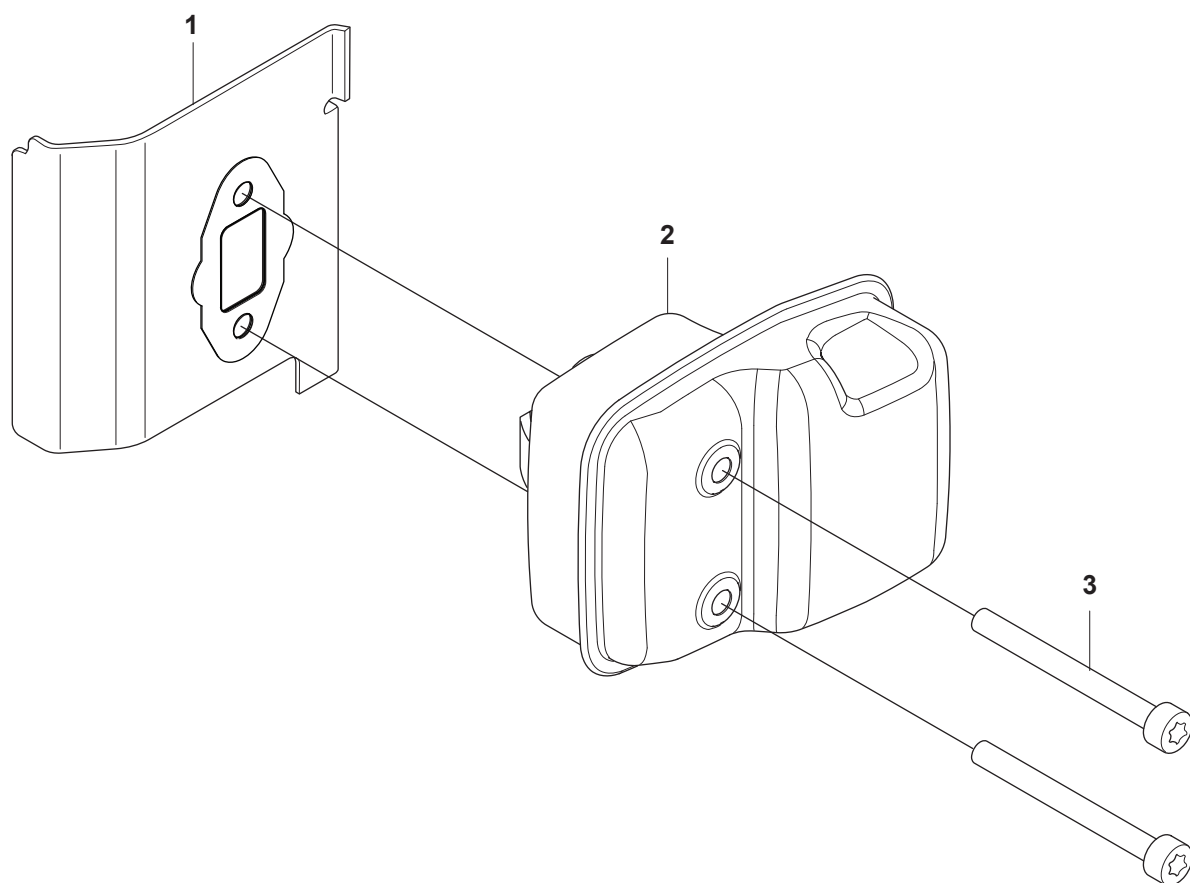
## IGNITION SYSTEM



**Fig. E IGNITION SYSTEM HT220-75, CHT220-60**

[illegible]

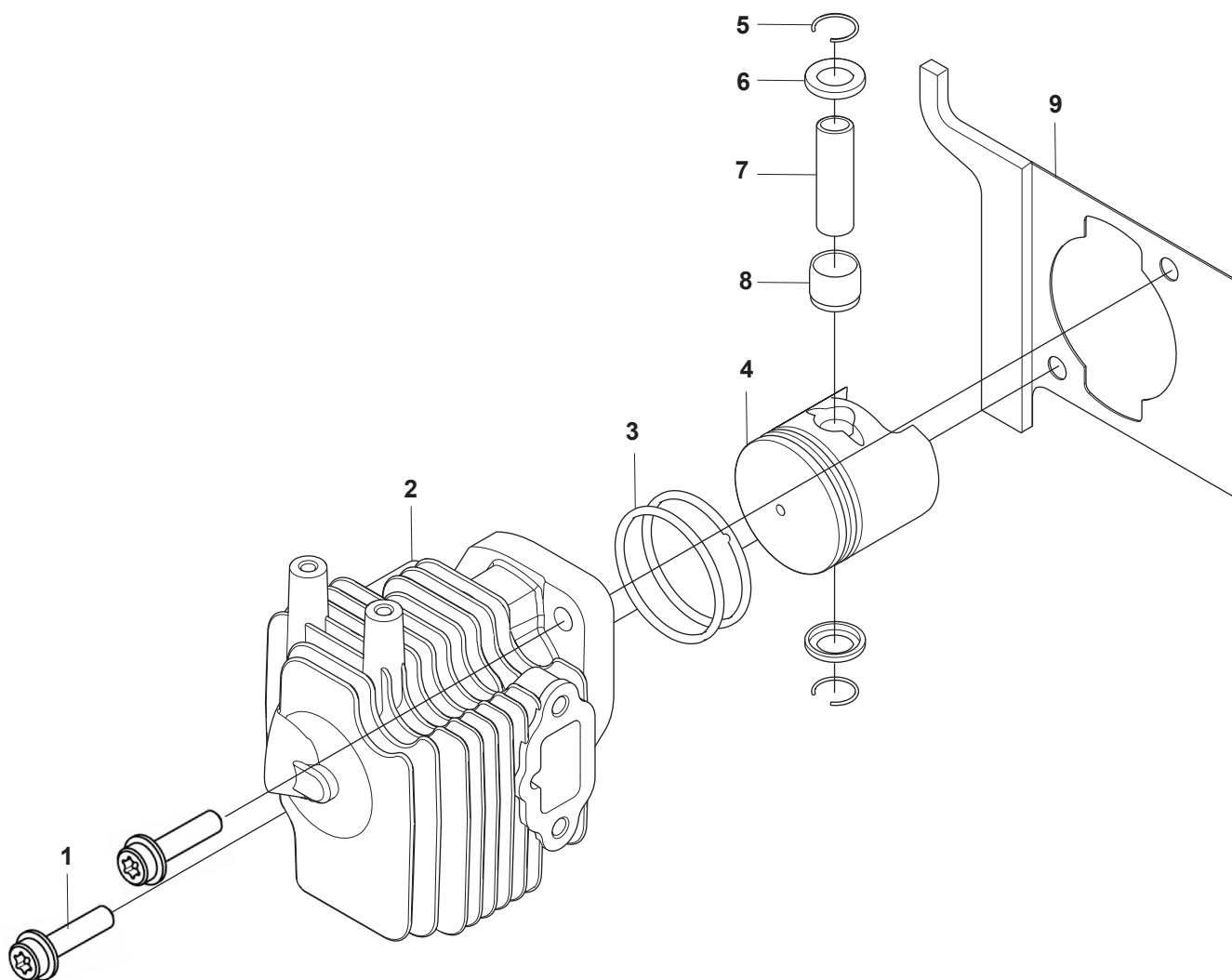
**F** HT220-75 , CHT220-60  
MUFFLER



**Fig. F MUFLER HT220-75, CHT220-60**

[illegible]

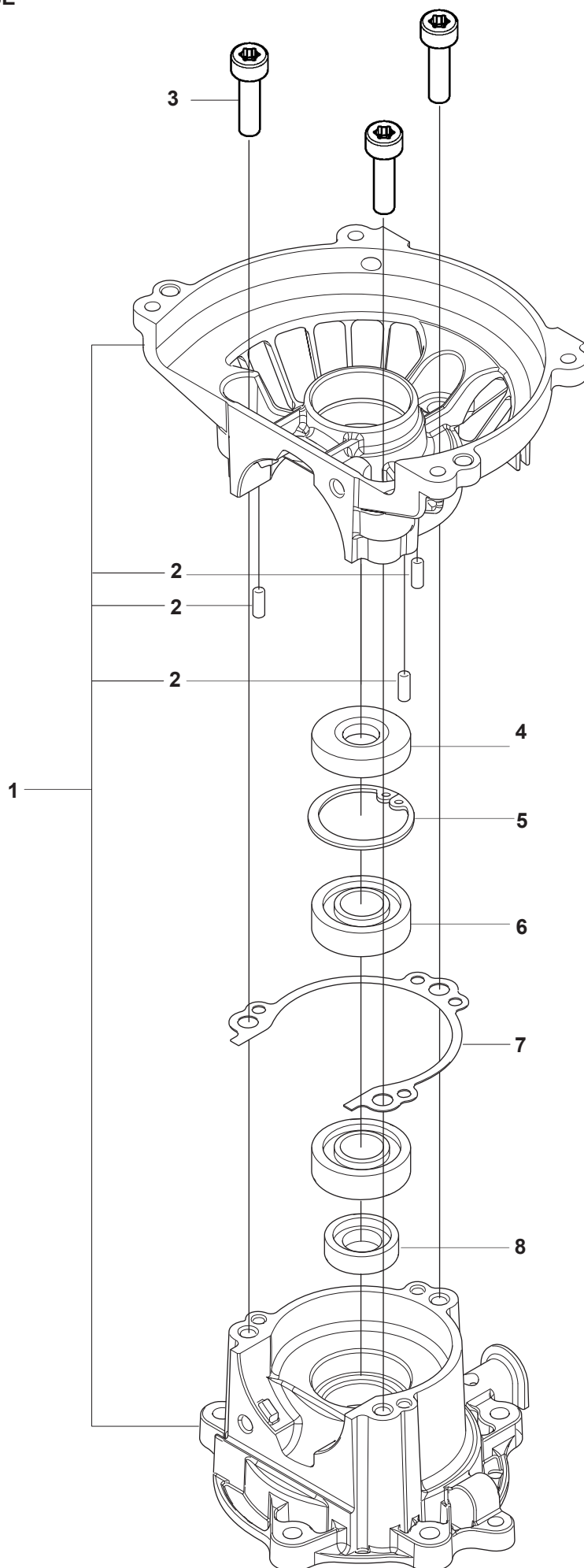
**G** HT220-75, CHT220-60  
CYLINDER & PISTON



**Fig. G CYLINDER & PISTON HT220-75, CHT220-60**

[illegible]

**H** HT220-75, CHT220-60  
CRANKCASE

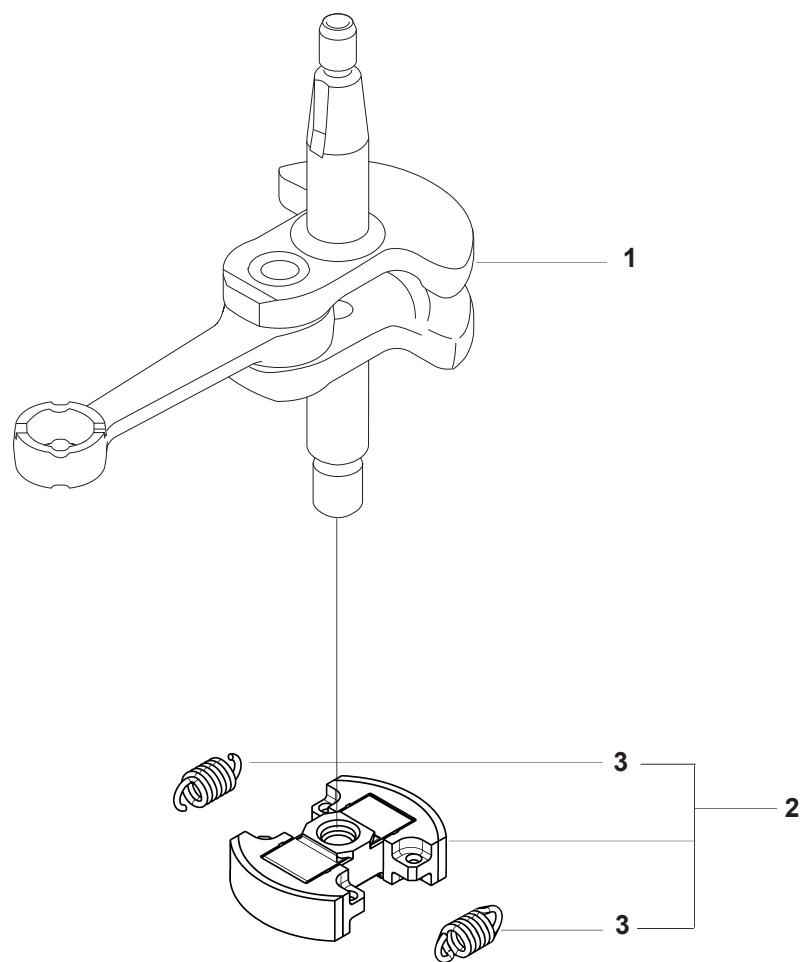




**Fig. H CRANKCASE HT220-75, CHT220-60**

[illegible]

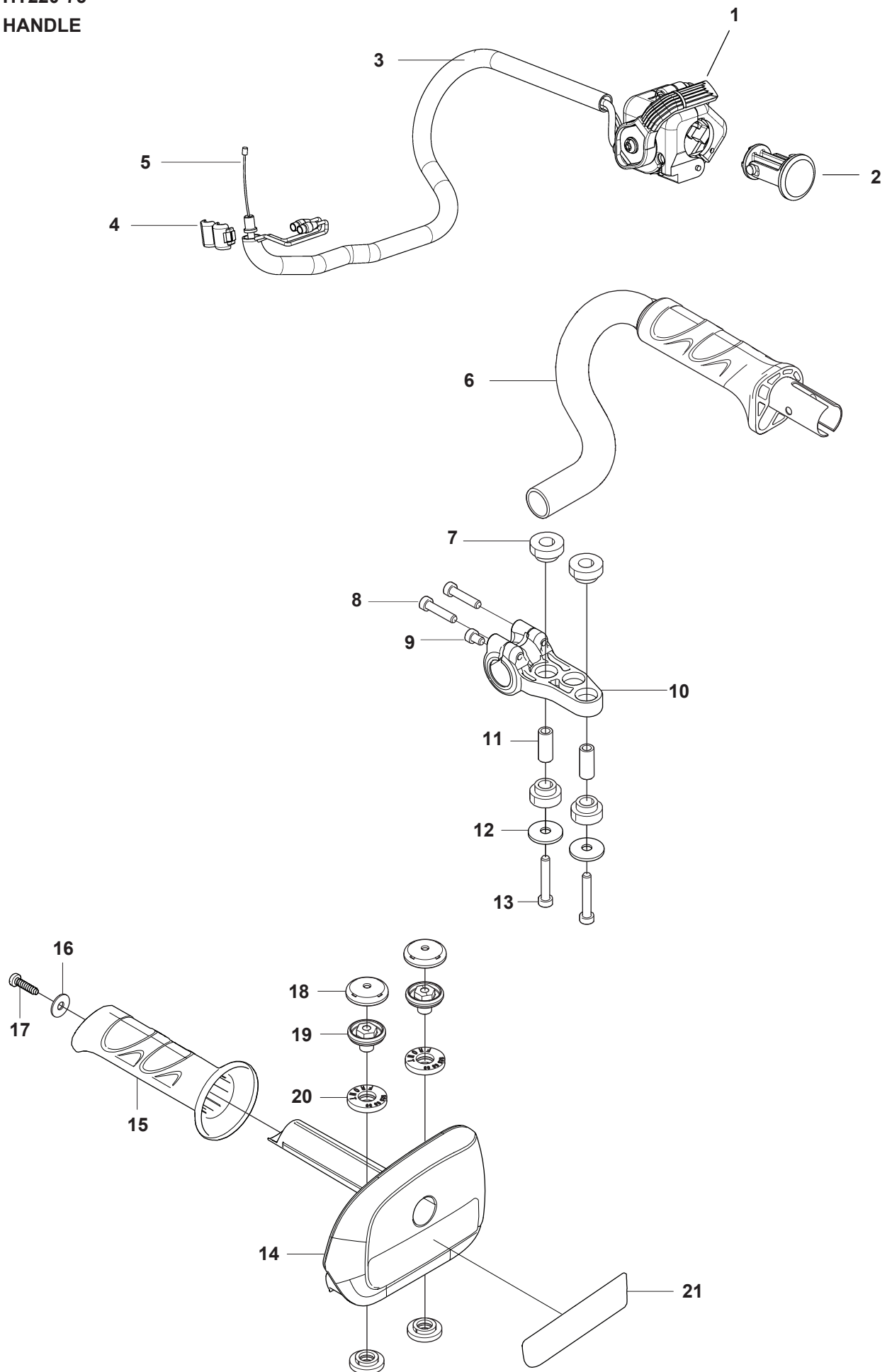
**J** HT220-75, CHT220-60  
CRANKSHAFT&CLUTCH



**Fig. J CRANKSHAFT & CLUTCH HT220-75, CHT220-60**

[illegible]

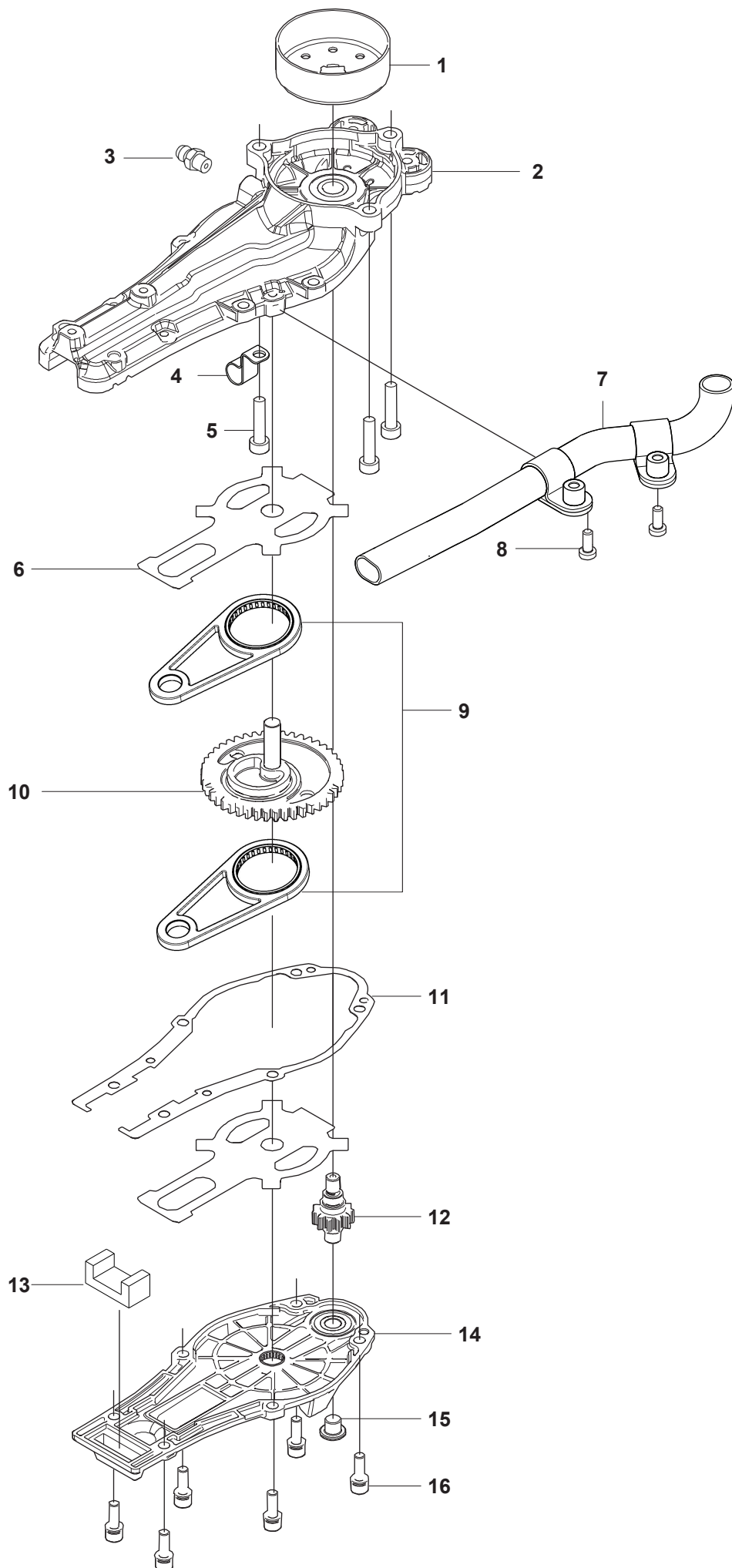
**K** HT220-75  
HANDLE



**Fig. K HANDLE HT220-75**

Key#	PART NUMBER	DESCRIPTION	Q'TY	REMARKS
1	590 64 11-01	LEVER, ASSY	1	
2	590 72 38-01	STOPPER	1	
3	581 41 04-01	TUBE	1	
4	577 13 32-01	JOINT	1	
5	585 73 30-12	CABLE, COMP	1	
6	590 78 43-01	HANDLEBAR, ASSY	1	
7	T4503-31210	ABSORBER	4	
8	578 79 69-01	BOLT	2	
9	581 49 98-01	BOLT	1	
10	590 72 44-01	BRACKET	1	
11	590 71 47-01	SLEEVE	2	
12	H734 18 14-55	WASHER	2	
13	544 21 84-05	SCREW	2	
14	590 71 32-02	FRONT HANDLE, HS	1	
15	590 71 33-01	HANDLE GRIP, FRONT	1	
16	503 23 00-35	WASHER	1	
17	T4970-52000	SCREW	1	
18	T4503-31230	HUB CAP	2	
19	590 92 41-01	HOLDER	2	
20	525 63 36-01	ANTIVIBRATION ELEMENT, FRONT	4	
21	596 62 50-02	DECAL, HANDLE	1	

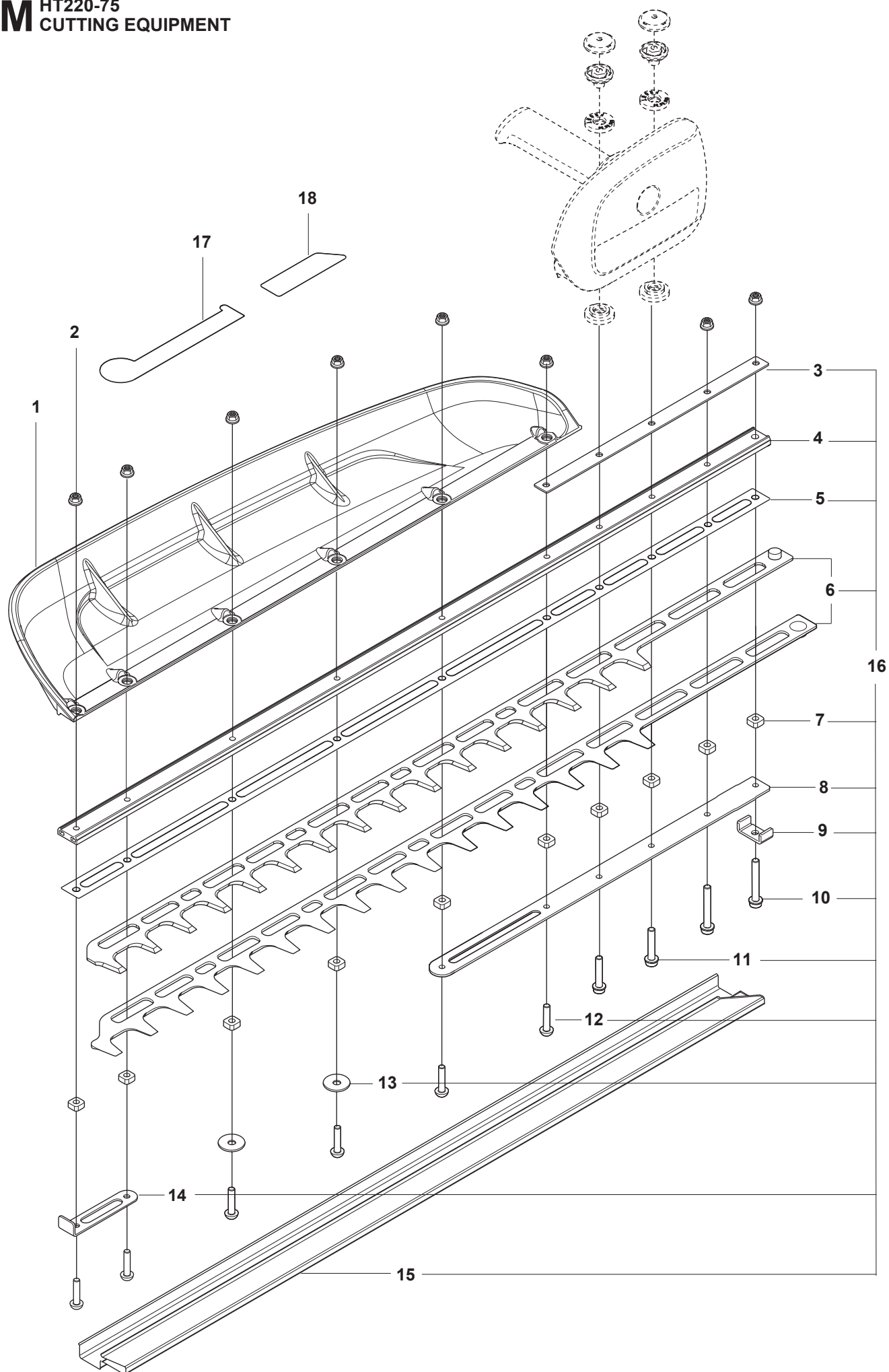
**L** HT220-75  
GEARBOX



**Fig. L GEARBOX HT220-75**

[illegible]

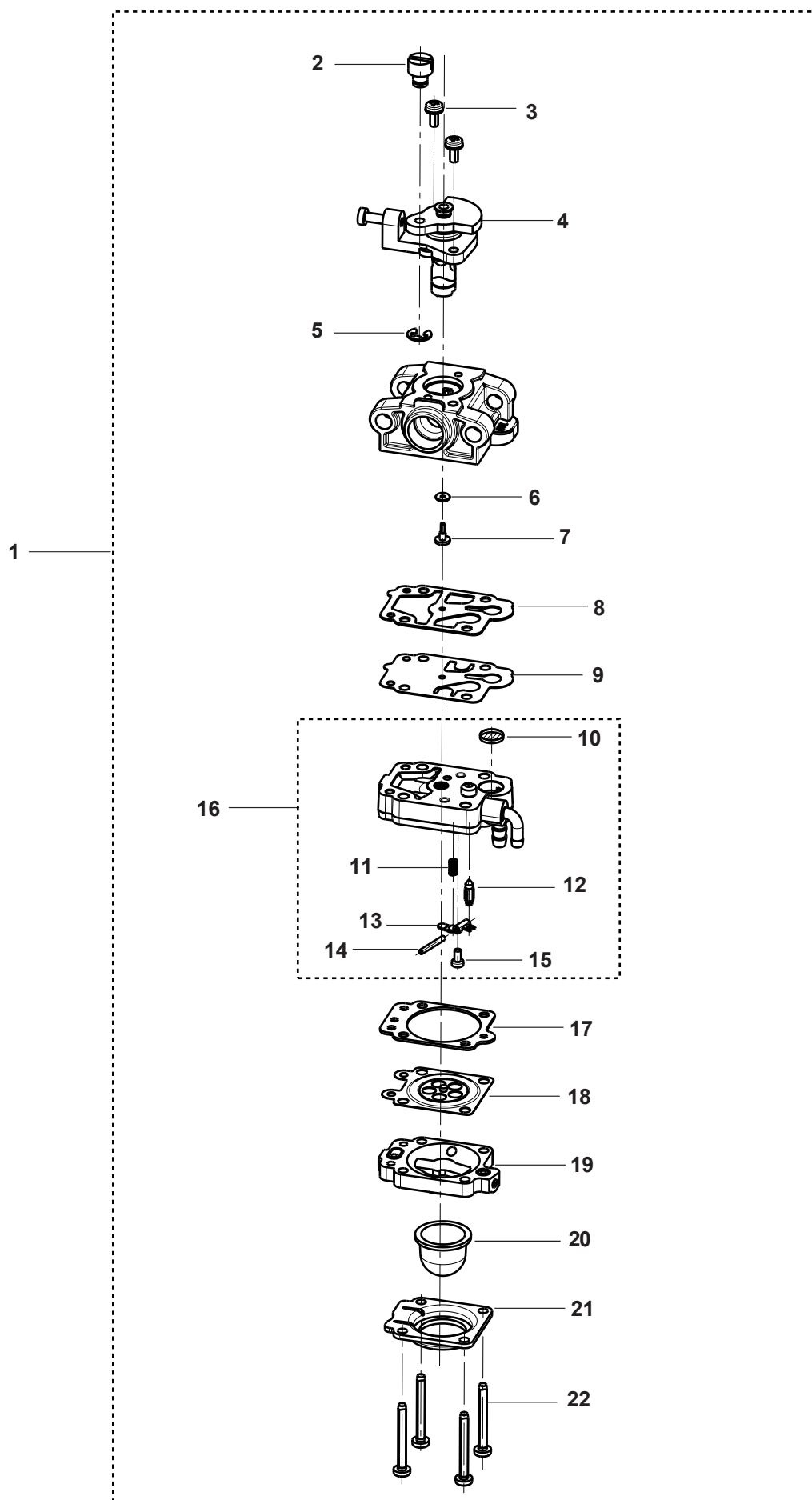
**M** HT220-75  
CUTTING EQUIPMENT





**Fig. M CUTTING EQUIPMENT HT220-75**

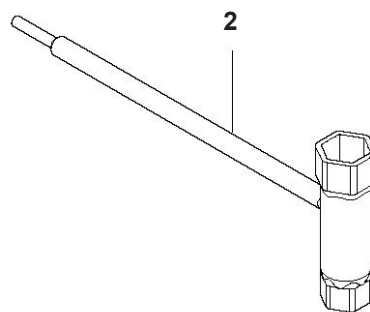
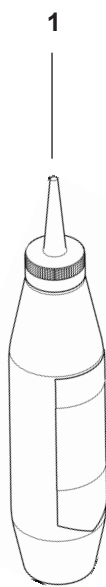
Key#	PART NUMBER	DESCRIPTION	Q'TY	REMARKS
1	590 33 99-01	PLATE, LEAF CATCHER	1	
2	592 75 13-01	NUT	8	
3	593 64 46-02	• BAR PLATE, UPPER	1	
4	590 32 70-02	• GUIDE BAR	1	
5	590 32 72-02	• WEAR PLATE	1	
6	598 64 16-02	• BLADE KIT	1	
7	590 33 92-01	• SPACER	10	
8	590 32 77-02	• BAR PLATE	1	
9	590 33 93-01	• BRACKET	1	
10	525 75 51-09	• SCREW	2	
11	525 75 51-04	• SCREW	2	
12	592 73 25-02	• SCREW	6	
13	592 73 81-01	• WASHER	2	
14	590 78 49-01	• PROTECTION, BLADE TIP	1	
15	590 71 30-03	• TRANSPORT GUARD	1	
16	590 32 65-03	CUTTING DECK ASSY	1	
17	596 62 51-01	DECAL, PLATE	1	
18	594 06 22-02	DECAL, CAUTION	1	



**Fig. N CARURETOR HT220-75, CHT220-60**

[illegible]

**P** HT220-75, CHT220-60  
ACCESSORIES



### Fig. P ACCESSORIES HT220-75, CHT220-60

[illegible]