



# PARTS LIST

## CHAIN SAW

**PHT 750**  
**PHT1200**  
**PHT1500**

( ENGINE : G20LS )

**NOTE :**

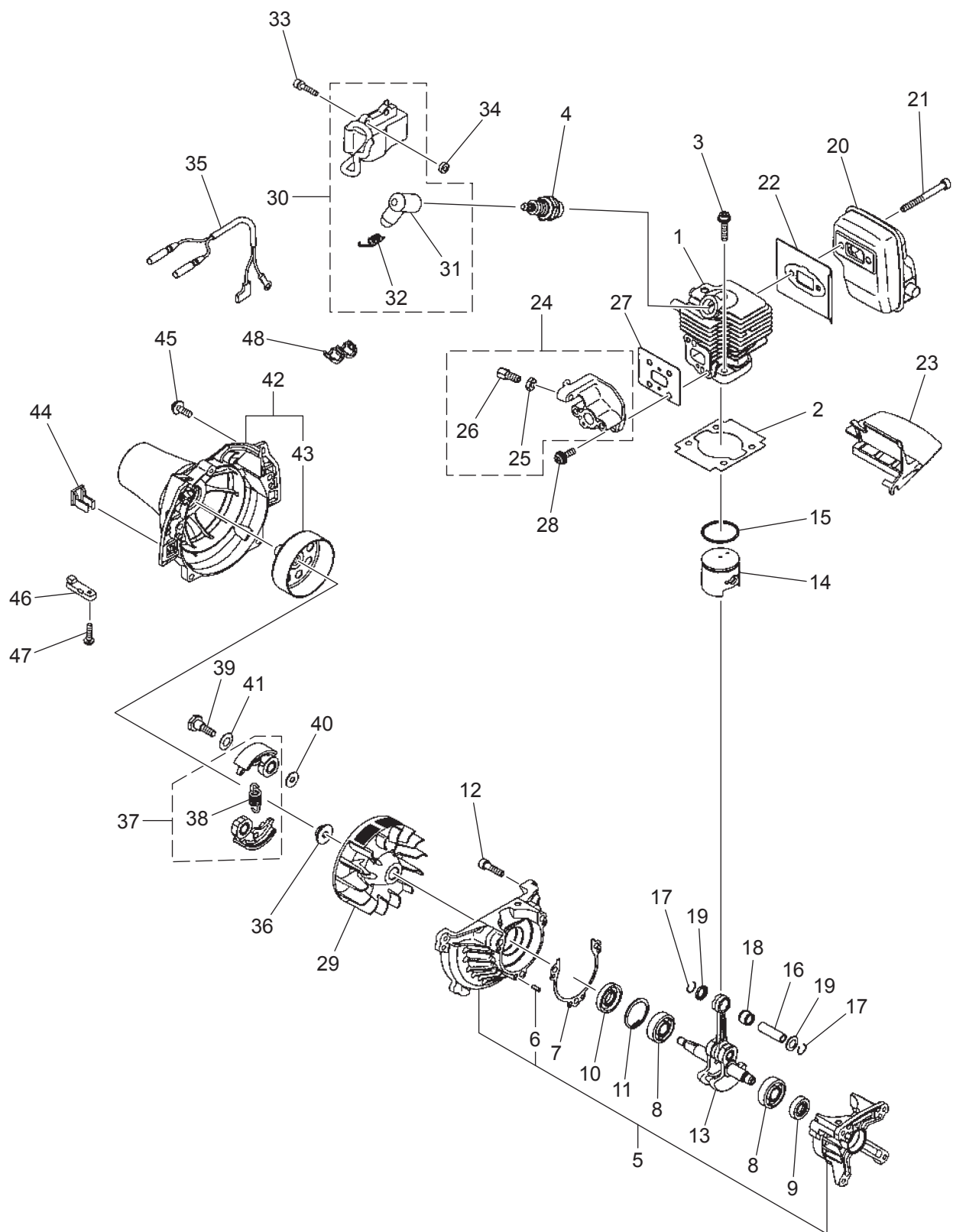
1. Use HUSQVARNA ZENOAH genuine parts specified in the parts list for repair and/or replacement.
2. HUSQVARNA ZENOAH does not warrant the machines, those which have been damaged by the use of any parts other than those specified by the company.
3. When placing orders of parts for repair and/or replacement, check if the model name and the serial number are suitable to those specified in the parts list, then use parts number described in the parts list.
4. The contents described in the parts list may change due to improvement.
5. The parts for the machine shall be supplied within ten (10) years after the machine is discontinued. [It is possible that some specific parts may be subject to change of their delivery term and list price within the limit of ten (10) years after the machine is discontinued. And it is also possible that some parts may be available even after the limit of ten (10) years.]

APPLICABLE ENGINE SERIAL NUMBERS:

2016 0100131 and up

August 2017

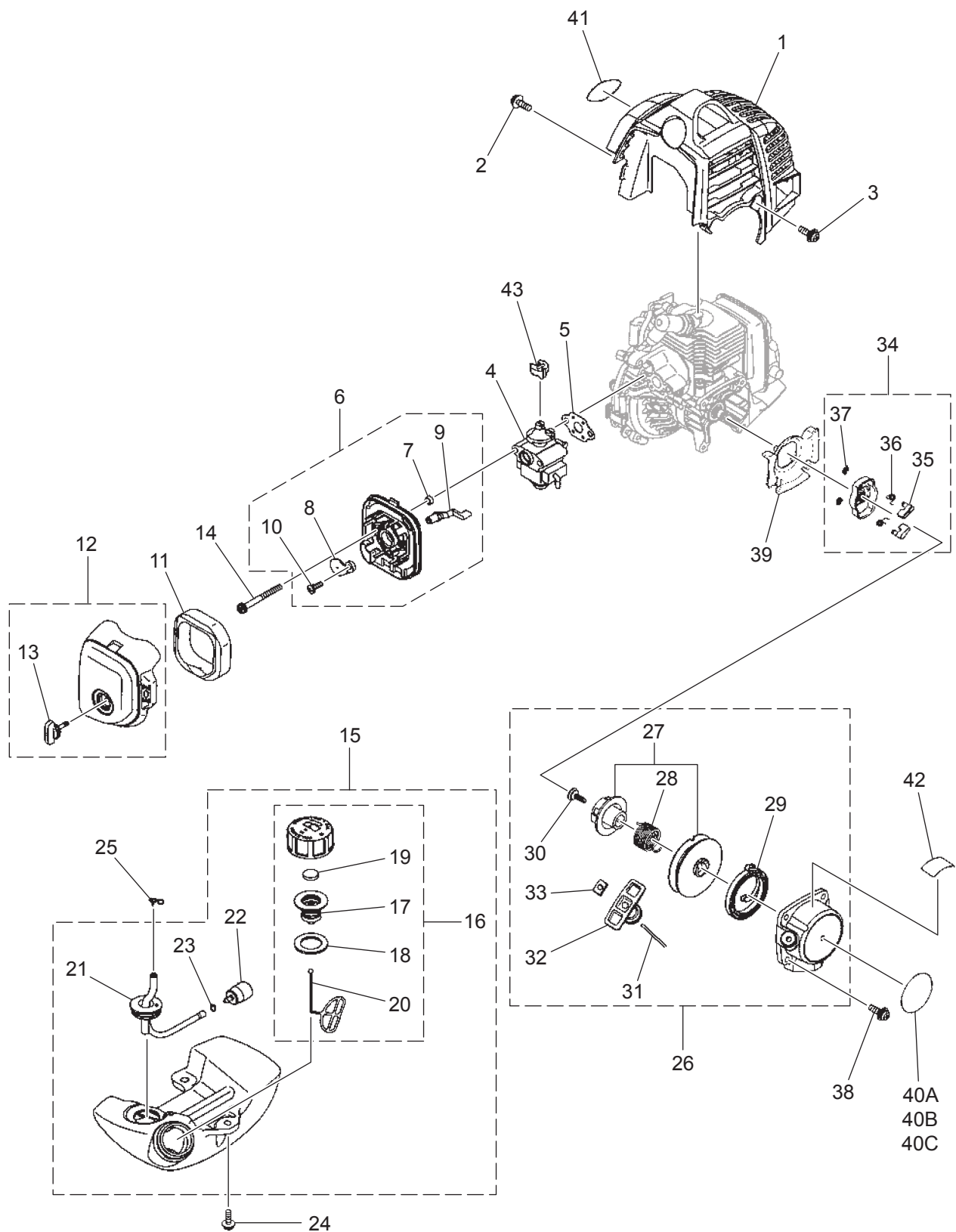
**Fig.1 ENGINE / COIL / CLUTCH**



**Fig. 1 PHT750,1200,1500****ENGINE / COIL / CLUTCH**

Key#	PART NUMBER	DESCRIPTION	Q'TY	REMARKS
1	848E4H12A0	CYLINDER	1	
2	T1600-12210	GASKET, BASE	1	
3	1850-12130	BOLT	2	M5x22-HSF
4	3699-90431	PLUG (BPM7Y)	1	NGK BPM7Y
5	T1600-21100	CRANKCASE-COMP	1	
6	2629-21130	• PIN	3	
7	T1600-21140	GASKET	1	
8	T1600-21240	BALL BEARING	2	10x26x8
9	T1600-21210	SEAL	1	10x20x5
10	T1600-21220	SEAL	1	10x26x5
11	04065-02612	SNAP RING	1	
12	01252-30520	BOLT	3	M5x20-HS
13	T1600-42003	SHAFT-COMP	1	
14	1160-41110	PISTON	1	
15	8488C32300	RING	1	
16	1101-41310	PIN	1	
17	1260-41320	SNAP RING	2	
18	5500-41410	ROLLER BEARING	1	
19	1101-41340	WASHER	2	
20	T1600-15110	MUFFLER	1	
21	01252-30550	BOLT	2	M5x50-HS
22	T1600-15210	GASKET	1	
23	T1600-15221	PLATE	1	
24	T1600-13100	INSULATOR-COMP	1	
25	0282-10604	• NUT	1	M6-H
26	T1600-13170	• SCREW	1	
27	5500-13122	GASKET NON ASBESTOS	1	
28	5500-85510	SCREW	2	M5x16-CS/PS
29	848E3071A0	ROTOR	1	
30	T1600-71200	COIL-ASSY	1	
31	T1600-72110	• CAP	1	
32	T1600-72120	• SPRING	1	
33	3350-14150	BOLT	2	M4x20-HS/PS
34	1260-71261	SPACER	2	
35	T1600-73200	CORD COMP	1	
36	2750-32620	NUT	1	M6-HF
37	848EA05110	SHOE-COMP	1	
38	T1700-51220	• SPRING	1	
39	1140-51250	BOLT	2	M6xH14
40	1140-51230	WASHER	2	P
41	T1600-51240	WASHER	2	W
42	588 43 25-01	HOUSING ASSY	1	
43	588 24 38-01	• DRUM	1	7 Spline
44	T1600-72210	CLAMP	1	
45	5500-85510	SCREW	4	M5x16-CS/PS
46	5500-31150	PLATE	1	
47	1850-32160	SCREW	1	M4x12-CS/PS
48	577 13 32-01	JOINT	1	

**Fig.2 FUELING SYSTEM / STARTER**



**Fig. 2 PHT750,1200,1500**
**FUELING SYSTEM / STARTER**

Key#	PART NUMBER	DESCRIPTION	Q'TY	REMARKS
1	584 30 75-01	COVER ENGINE	1	
2	2630-33610	SCREW	1	T4x12-CS
3	0263-90516	SCREW	2	M5x16-CS/PS
4	848E4L8100	CARBURETOR ASSY	1	WYL-258
5	5500-13131	GASKET NON ASBESTOS	1	
6	T1600-82100	BODY ASSY	1	
7	1970-82190	• SLEEVE	2	
8	T1600-82130	• PLATE, CHOKE	1	
9	T1600-82140	• LEVER CHOKE	1	
10	2630-33610	• SCREW	1	T4x12-CS
11	5500-82171	ELEMENT	1	
12	T1600-82200	COVER ASSY	1	
13	5500-82221	• KNOB	1	
14	0263-90550	SCREW	2	M5x50-CS/PS
15	848E428501	TANK-ASSY	1	
16	5607-85201	• CAP-ASSY	1	
17	5601-85300	• • HOLDER-ASSY	1	
18	5500-85220	• • PACKING	1	
19	5601-85260	• • FILTER	1	
20	4820-85260	• • STOPPER	1	
21	4810-85300	• PIPE COMP	1	
22	5500-85400	• FILTER	1	
23	1260-85460	• CLIP	1	
24	5500-85510	SCREW	3	M5x16-CS/PS
25	1950-86120	CLIP	1	
26	848E407510	REC OIL-ASSY	1	
27	578 42 71-01	• CAM & REEL KIT	1	
28	848E4075G0	• SPRING	1	
29	1850-75130	• SPRING	1	
30	848E4075E0	• SCREW	1	
31	848E4075F0	• ROPE	1	3x830
32	1140-75320	• KNOB	1	
33	5500-75170	• PLATE	1	
34	848E407520	PULLEY	1	
35	848E4075R0	• RATCHET	2	
36	848E4075S0	• SPRING	2	
37	848E4075T0	• E-RING	2	
38	0263-90516	SCREW	2	M5x16-CS/PS
39	848E4221L0	COVER	1	
40A	5860-76312	DECAL	1	PHT1500EZ
40B	5860-76313	DECAL	1	PHT1200EZ
40C	5860-76314	DECAL	1	PHT750EZ
41	T1600-31131	LABEL BM	1	ZENOAH
42	5500-91190	LABEL	1	CAUTION
43	1601-81810	CAP	1	

Fig.3 CARBURETOR

CARBURETOR MODEL  
WYL-258

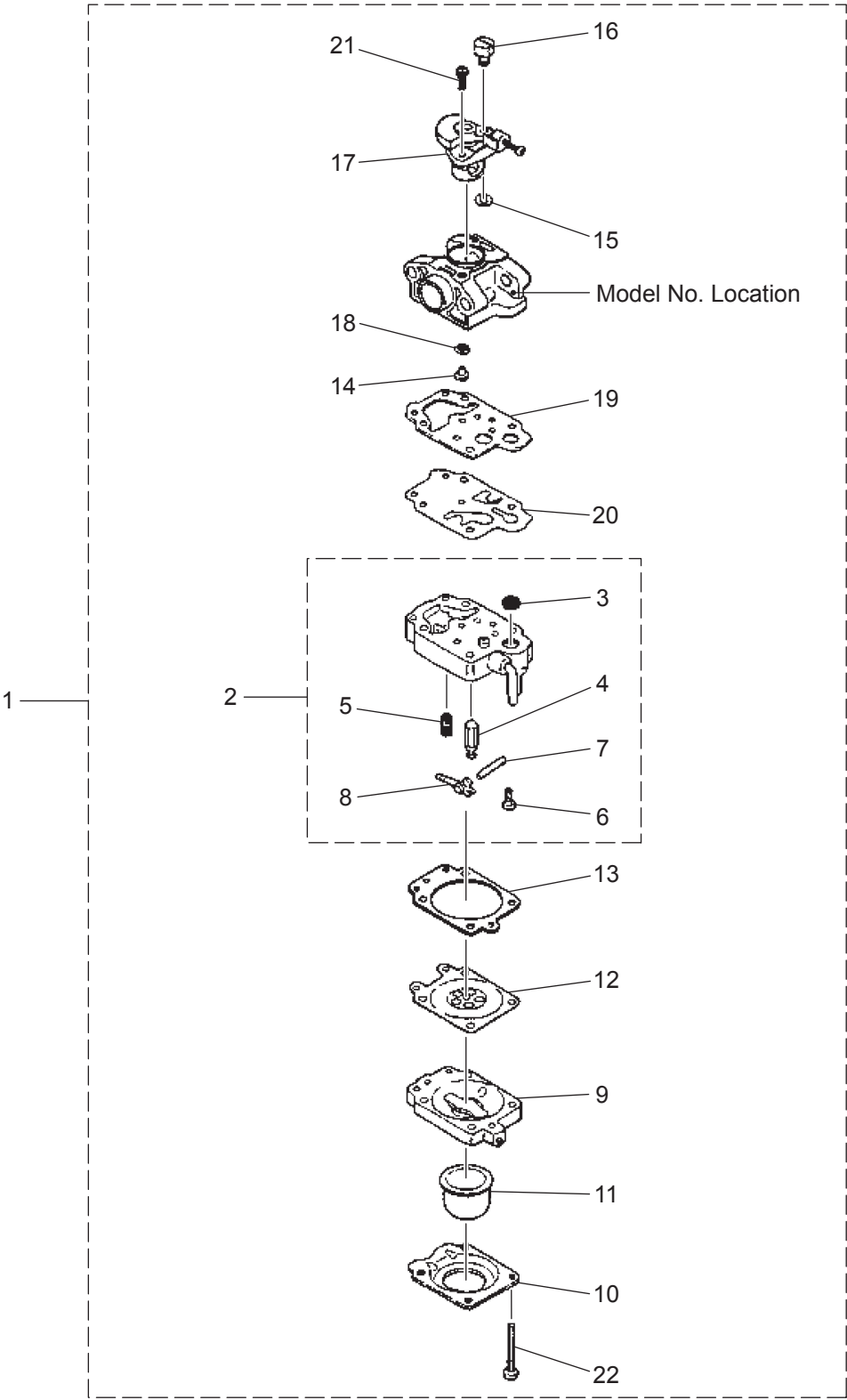


Fig. 3 PHT750,1200,1500

## CARBURETOR

Key#	PART NUMBER	DESCRIPTION	Q'TY	REMARKS
1	848E4L8100	CARBURETOR ASSY	1	WYL-258
2	1794-81450	• BODY	1	
3	3306-81380	• • SCREEN	1	
4	3356-81310	• • NEEDLE	1	
5	1794-81270	• • SPRING	1	
6	1850-81220	• • SCREW	1	
7	3310-81250	• • PIN	1	
8	3310-81230	• • LEVER	1	
9	1850-81490	• BODY	1	
10	1850-81520	• COVER	1	
11	1751-81510	• BUTTON	1	
12	848HE081K0	• DIAPHRAGM-A	1	
13	1850-81470	• GASKET	1	
14	8488J13600	• JET	1	#36
15	1751-81130	• RING	1	
16	1881-81140	• SWIVEL	1	
17	T1600-81150	• ACCELATOR THROTTLE	1	
18	1751-81240	• O-RING	1	
19	4810-81410	• GASKET	1	
20	1065-81420	• DIAPHRAGM	1	
21	5850-81110	• SCREW	2	
22	1850-81530	• SCREW	4	





**Fig.4 PHT750,1200,1500****SHAFT / HANDLE / ACCESSORY**

Key#	PART NUMBER	DESCRIPTION	Q'TY	REMARKS
1A	6420-11301	PIPE COMP	1	21.5x24x1500 (PHT1500)
1B	588 86 05-01	PIPE COMP	1	21.5x24x1200 (PHT1200)
1C	T3077-11300	PIPE-COMP	1	20.6x24x750 (PHT750)
2A	578 87 88-02	DRIVE SHAFT	1	7x1542-7/7 (PHT1500)
2B	578 87 88-03	DRIVE SHAFT	1	7x1242-7/7 (PHT1200)
2C	578 87 88-04	DRIVE SHAFT	1	7x792-7/7 (PHT750)
3A	578 79 50-62	DECAL, NAME	1	PHT1500EZ
3B	578 79 50-63	DECAL, NAME	1	PHT1200EZ
3C	585 07 49-05	DECAL, NAME	1	PHT750EZ
4	8488X10030	LABEL, CAUTION	1	
5	588 86 63-01	DECAL, CAUTION	1	
6	T3300-17202	HANGER-COMP	1	
7	8488052000	SCREW	1	M5x20-CS/PS
8	6442-11310	GRIP	1	L150
9	6130-11341	SPRING	2	
10	8488R00063	LEVER-ASSY	1	
11	8488L20020	• SWITCH	1	
12	8488M10160	• CORD-COMP	2	
13	0263-60520	• SCREW	1	
14	2630-31950	• SCREW	2	
15	578 93 48-01	CABLE COMP	1	
16	3460-25810	TUBE	1	
17	T3541-14000	HANDLE-ASSY	1	
18	T3541-14341	• GRIP	1	
19	T3541-14351	• SPACER	1	
20	0224-00655	• BOLT	1	M6x55-H
21	3238-15230	• WASHER	1	
22	T3541-17110	PLATE	1	
23	848J823610	STRAP-ASSY	1	
24	3520-91110	BAG	1	
25	T3541-92110	GOGGLE	1	
26	585 97 98-01	TOOL SET	1	
27	577 87 34-01	• WRENCH	1	13x19-T27
28	09007-00425	• WRENCH	1	H4