



PARTS LIST

HANDHELD BLOWERS

HBZ260EZ

NOTE :

1. Use HUSQVARNA ZENOAH genuine parts specified in the parts list for repair and/or replacement.
2. HUSQVARNA ZENOAH does not warrant the machines, those which have been damaged by the use of any parts other than those specified by the company.
3. When placing orders of parts for repair and/or replacement, check if the model name and the serial number are suitable to those specified in the parts list, then use parts number described in the parts list.
4. The contents described in the parts list may change due to improvement.
5. The parts for the machine shall be supplied within ten (10) years after the machine is discontinued. [It is possible that some specific parts may be subject to change of their delivery term and list price within the limit of ten (10) years after the machine is discontinued. And it is also possible that some parts may be available even after the limit of ten (10) years.]

APPLICABLE SERIAL NUMBERS:

20160200101 and up

January 2016

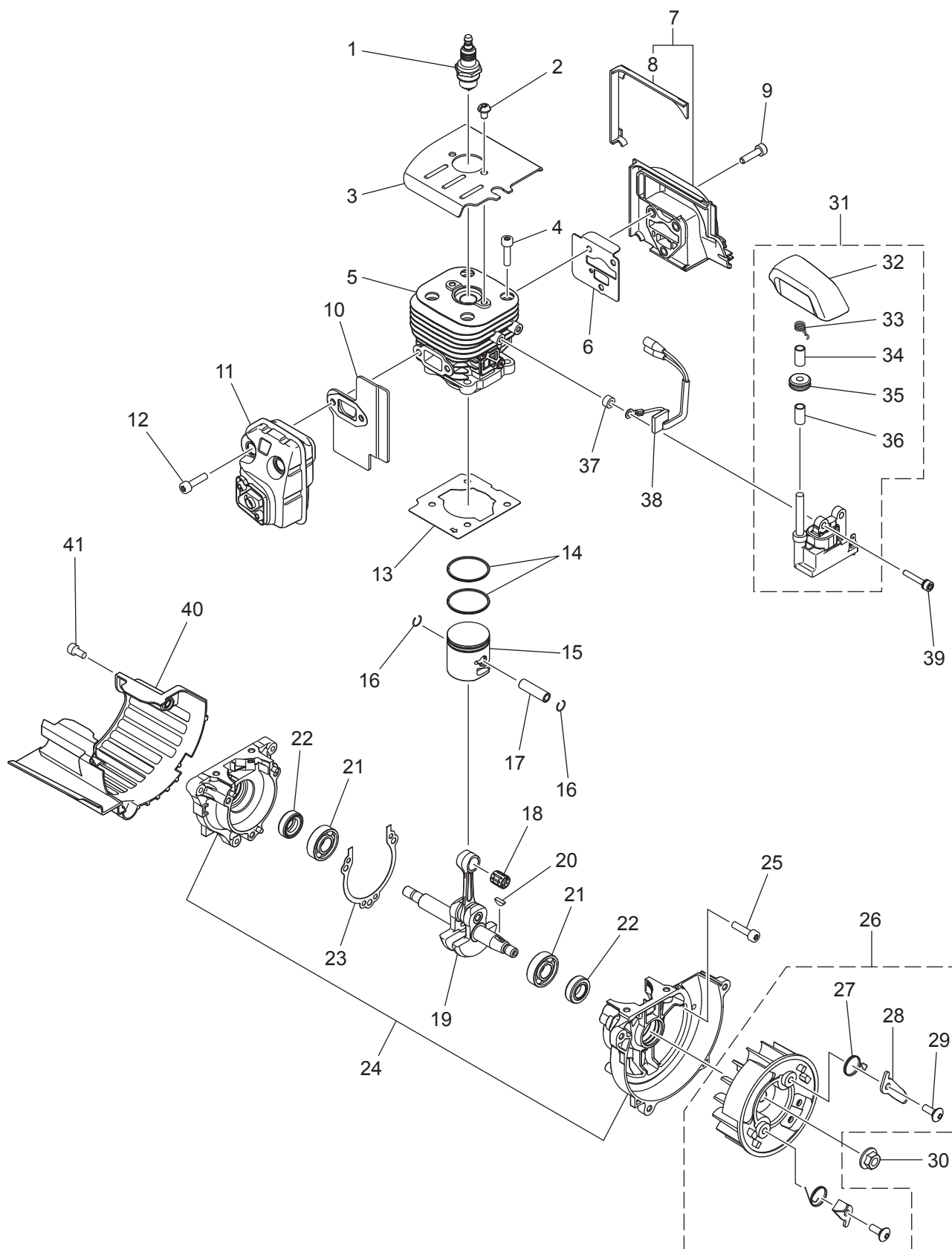
Fig.1 ENGINE UNIT

Fig. 1 HBZ260EZ

ENGINE UNIT

Key#	PART NUMBER	DESCRIPTION	Q'TY	REMARKS
1	3699-92672	SPARK PLUG	1	BPMR8Y
2	T4960-50810	SCREW	2	M5x0.8
3	585 60 19-01	PLATE, CYLINDER	1	
4	4820-13180	SCREW	4	M5x0.8
5	577 97 90-01	CYLINDER, COMP	1	
6	585 60 33-01	GASKET, INSULATOR	1	
7	587 19 45-01	INSULATOR, ASSY	1	
8	587 12 20-01	• INSULATING SHEET	1	
9	585 88 34-01	BOLT	3	M5x0.8
10	585 60 39-01	GASKET, MUFFLER	1	
11	586 23 17-01	MUFFLER ASSY	1	
12	4820-13180	SCREW	2	M5x0.8
13	585 60 18-01	GASKET, BASE	1	
14	8488C34101	RING	2	
15	577 91 74-01	PISTON	1	
16	1260-41320	RING	2	
17	1600-41310	PIN	1	
18	576 40 27-01	BEARING	1	
19	585 60 29-01	CRANKSHAFT, COMPLETE	1	
20	1000-43240	KEY	1	
21	06030-06001	BEARING	2	
22	4810-21210	SEALING	2	
23	585 60 26-01	GASKET, CASE	1	
24	585 60 21-01	CRANKCASE, COMP	1	
25	4820-13180	SCREW	3	M5x0.8
26	585 68 31-01	FLYWHEEL ASSY	1	
27	586 34 65-01	• SPRING	2	
28	586 34 63-01	• RATCHET	2	
29	586 34 64-01	• BOLT	2	M5x0.8
30	1650-43230	NUT	1	
31	585 68 32-02	IGNITION COIL ASSY	1	
32	585 60 37-02	• SPARK PLUG CAP	1	
33	577 88 47-01	• SPRING	1	
34	576 88 27-01	• IGNITION CABLE	1	
35	848F6L71E0	• CAP	1	
36	587 28 34-01	• TUBE	1	
37	588 17 14-01	SPACER	2	
38	586 98 66-01	CORD, COMP	1	
39	8488-142500	BOLT	2	M4x0.7
40	585 60 40-01	PLATE, MUFFLER	1	
41	4820-12350	SCREW	2	M5x0.8

Fig.2 AIR UNIT

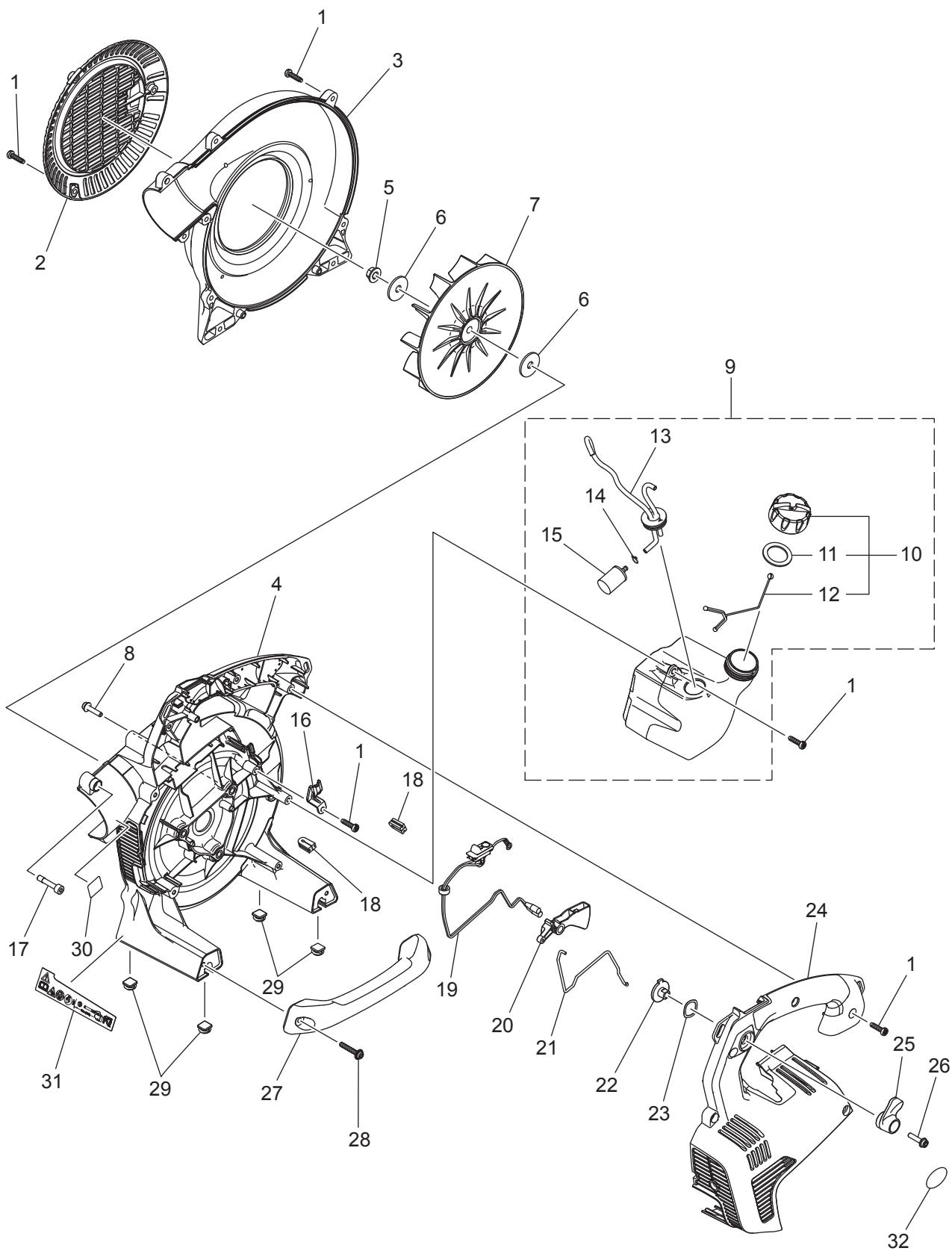


Fig. 2 HBZ260EZ

AIR UNIT

Key#	PART NUMBER	DESCRIPTION	Q'TY	REMARKS
1	T4970-52000	SCREW	20	M5x1.81
2	585 62 38-02	GUARD, NET	1	
3	586 01 78-01	VOLUTE, COVER	1	
4	586 01 77-01	VOLUTE, CASE	1	
5	585 62 54-01	NUT	1	M8x1.0
6	6811-12220	WASHER	2	
7	585 62 53-01	FAN	1	
8	4820-12130	BOLT	3	M5x0.8
9	585 63 51-03	FUEL TANK ASSY	1	
10	576 40 37-02	• TANK CAP	1	
11	577 04 87-01	• • GASKET	1	
12	577 04 91-02	• • HOLDER	1	
13	577 50 99-05	• PIPE, COMP	1	
14	1260-85460	• CLIP	1	
15	503 44 32-01	• FILTER	1	
16	586 90 98-01	CLAMP	1	
17	585 88 37-01	BOLT	1	M6x1
18	4810-72120	GROMMET	2	
19	587 39 87-01	SWITCH ASSY	1	
20	586 01 79-01	THROTTLE LEVER	1	
21	586 01 80-01	THROTTLE ROD	1	
22	585 62 47-01	RATCHET	1	
23	588 90 34-01	WASHER	1	
24	586 01 81-01	ENGINE COVER	1	
25	588 69 02-01	CONTROL LEVER	1	
26	4820-12130	BOLT	1	M5x0.8
27	586 01 86-01	HANDLE, ASSIST	1	
28	586 01 87-01	SCREW	2	M5x1.81
29	588 78 37-01	ISOLATOR	4	
30	585 70 27-01	DECAL, LEMA,COMPLY	1	
31	588 84 16-01	DECAL, CAUTION		
32	577 95 56-01	DECAL, STRATOCHARGED		

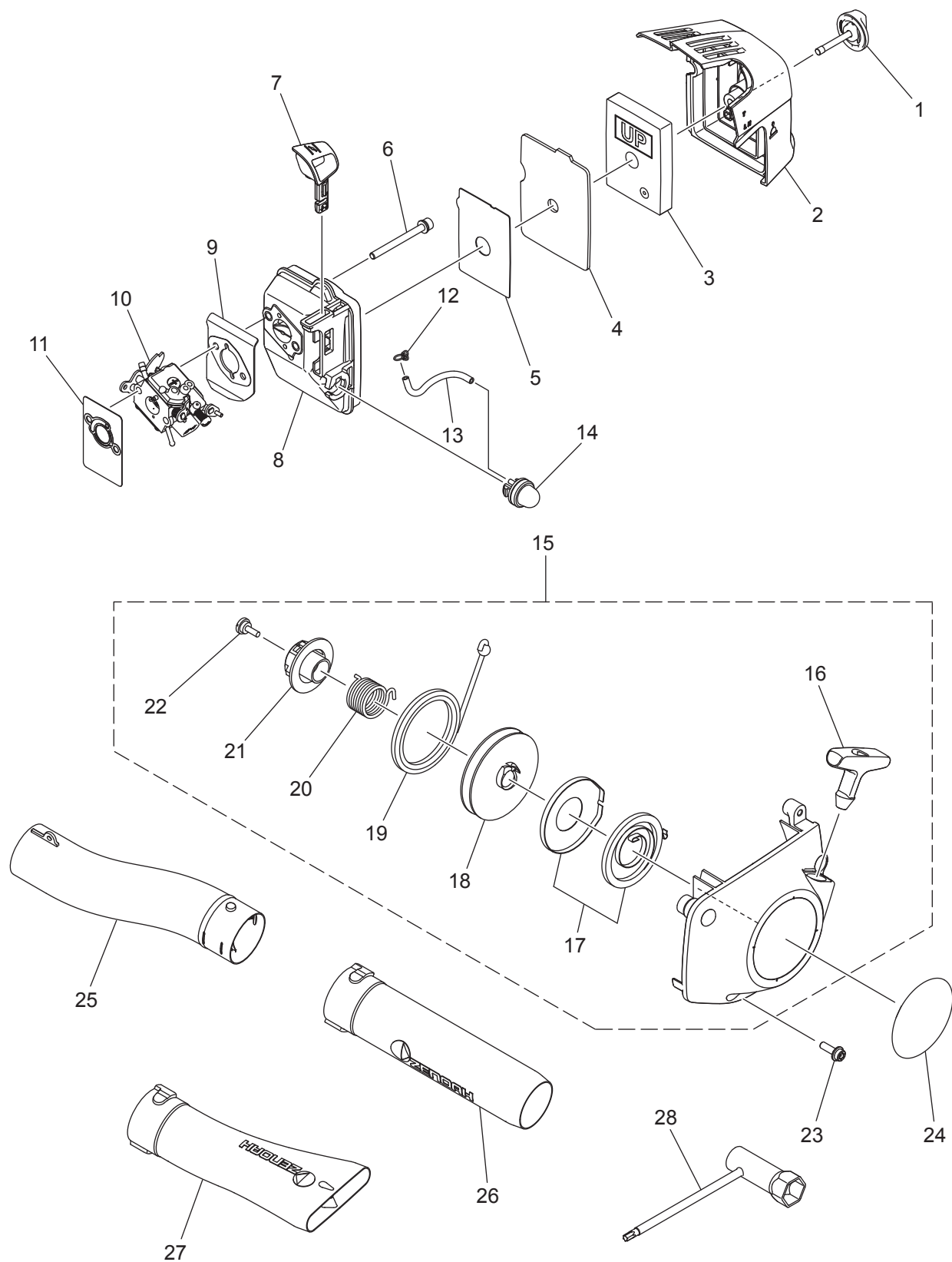
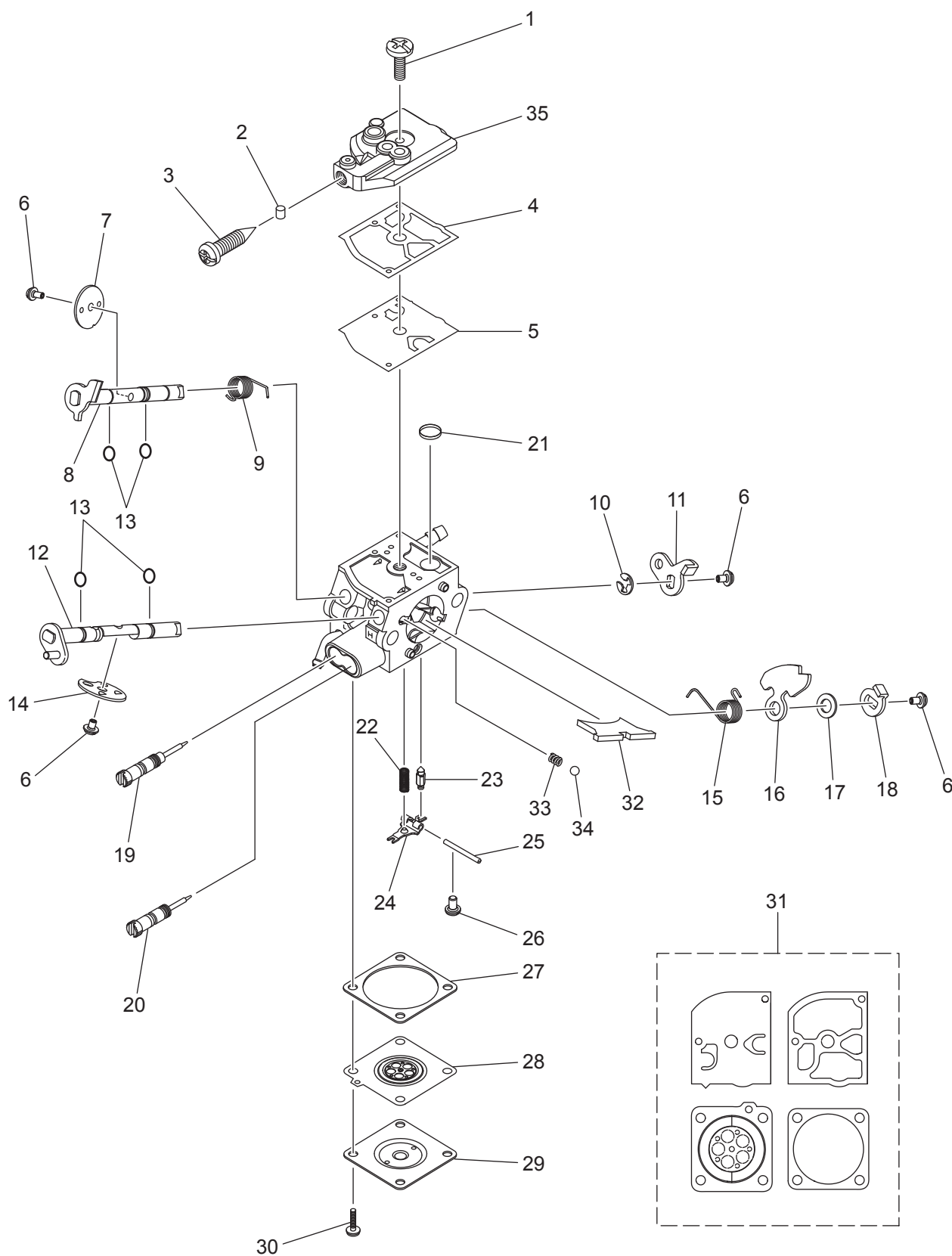
Fig.3 INTAKE, RECOIL, ACCESSORY

Fig.4 CARBURETOR

CARBURETOR

8