



PARTS LIST

BACKPACK BLOWER

EBZ7500

NOTE :

1. Use Husqvarna Zenoah genuine parts specified in the parts list for repair and/or replacement.
2. Husqvarna Zenoah does not warrant the machines, those which have been damaged by the use of any parts other than those specified by the company.
3. When placing orders of parts for repair and/or replacement, check if the model name and the serial number are suitable to those specified in the parts list, then use parts number described in the parts list.
4. The contents described in the parts list may change due to improvement.
5. The parts for the machine shall be supplied within ten (10) years after the machine is discontinued. [It is possible that some specific parts may be subject to change of their delivery term and list price within the limit of ten (10) years after the machine is discontinued. And it is also possible that some parts may be available even after the limit of ten (10) years.]

APPLICABLE SERIAL NUMBERS : 20100101 and up

EBZ7500

Fig.1 BLOWER GROUP

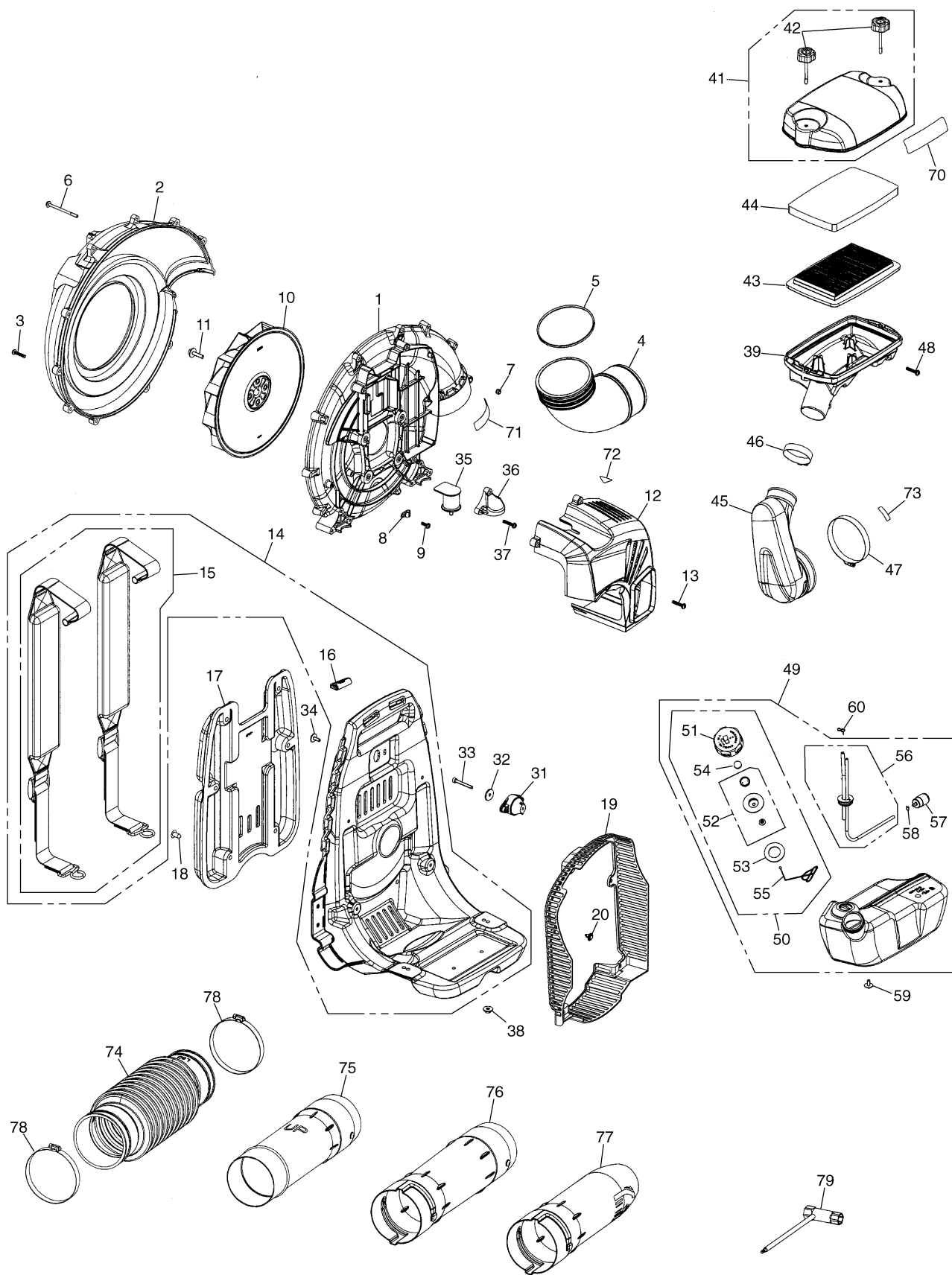


Fig.1 BLOWER GROUP

Key#	Part Number	Description	Q'ty	Key#	Part Number	Description	Q'ty
1	576 56 12-01	VOLUTE, CASE	1	59	577 62 88-01	SCREW	2
2	576 56 13-01	VOLUTE, COVER	1	60	1950-86120	CLIP	1
3	T4970-52510	SCREW	8				
4	576 56 14-01	ELBOW	1	70	576 56 44-01	DECAL, CLEANER	1
5	07000-12100	O-RING	1	71	848-8X1-0070	DECAL, CAUTION	1
6	T4960-57030	SCREW	2	72	848-C1B-90G0	LABEL	1
7	3310-53331	NUT	2	73	T1108-82061	LABEL	1
8	848-8K4-0010	CLAMP	2	74	576 56 47-01	HOSE	1
9	T4970-51410	SCREW	2	75	576 56 48-01	PIPE	1
10	576 56 15-01	FAN	1	76	576 56 49-01	PIPE, STRAIGHT	1
11	576 56 16-01	BOLT	4	77	576 56 50-01	PIPE, END	1
12	576 56 17-01	ENGINE COVER	1	78	848-8K4-0031	CLAMP	2
13	T4970-52510	SCREW	5	79	848-8U1-0020	SOCKET	1
14	578 10 16-01	FRAME, ASSY	1				
15	848-L5Z-3610	• BAND ASSY	2				
16	848-L58-36C1	• CLIP	2				
17	576 56 20-01	PAD	1				
18	3495-21321	CLIP	6				
19	576 56 21-01	NET	1				
20	1480-74711	CLIP	4				
31	2750-32510	DAMPER	1				
32	577 35 79-01	WASHER	1				
33	848-815-4000	BOLT	1				
34	T4960-51631	SCREW	2				
35	576 56 22-01	DAMPER	2				
36	576 56 23-01	BRACKET	2				
37	T4970-52510	SCREW	6				
38	2750-32620	NUT	2				
39	576 56 37-01	BODY	1				
41	576 56 38-01	COVER, ASSY	1				
42	848-L53-83J1	• KNOB BOLT	2				
43	T4012-82311	ELEMENT	1				
44	T4012-82321	ELEMENT	1				
45	576 56 40-01	HOSE	1				
46	848-8K4-0001	CLAMP	1				
47	848-8K4-0021	CLAMP	1				
48	T4970-52510	SCREW	4				
49	578 88 16-01	TANK ASSY	1				
50	848-L23-8510	• TANK CAP ASSY	1				
51	3490-23214	•• CAP	1				
52	4500-85300	•• HOLDER ASSY	1				
53	4500-85220	•• PACKING	1				
54	5601-85260	•• FILTER	1				
55	848-L23-85N0	•• HOLDER	1				
56	577 08 98-01	• PIPE, COMP.	1				
57	3302-85400	• FILTER	1				
58	1260-85460	• CLIP	1				

EBZ7500

Fig.2 ENGINE GROUP

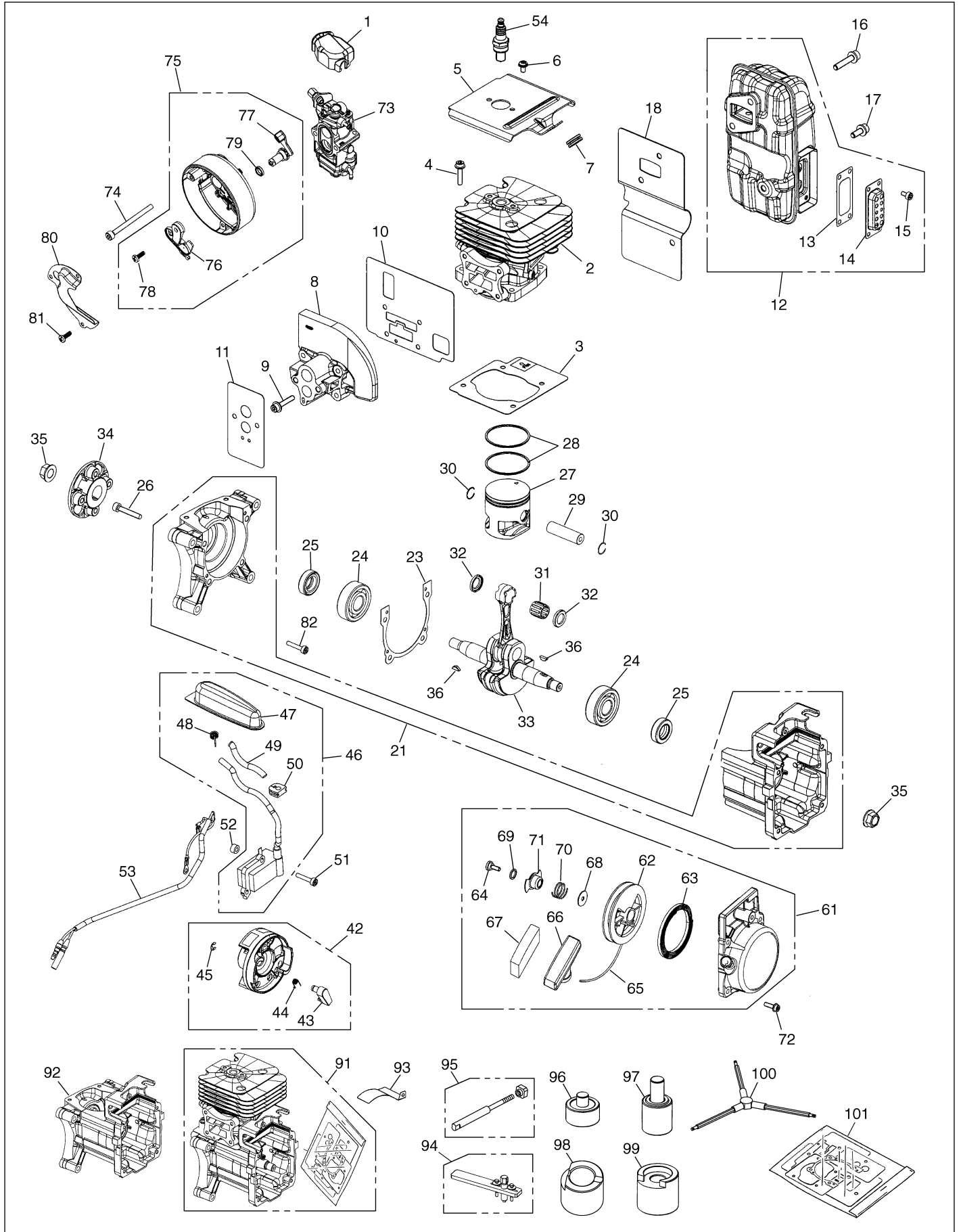
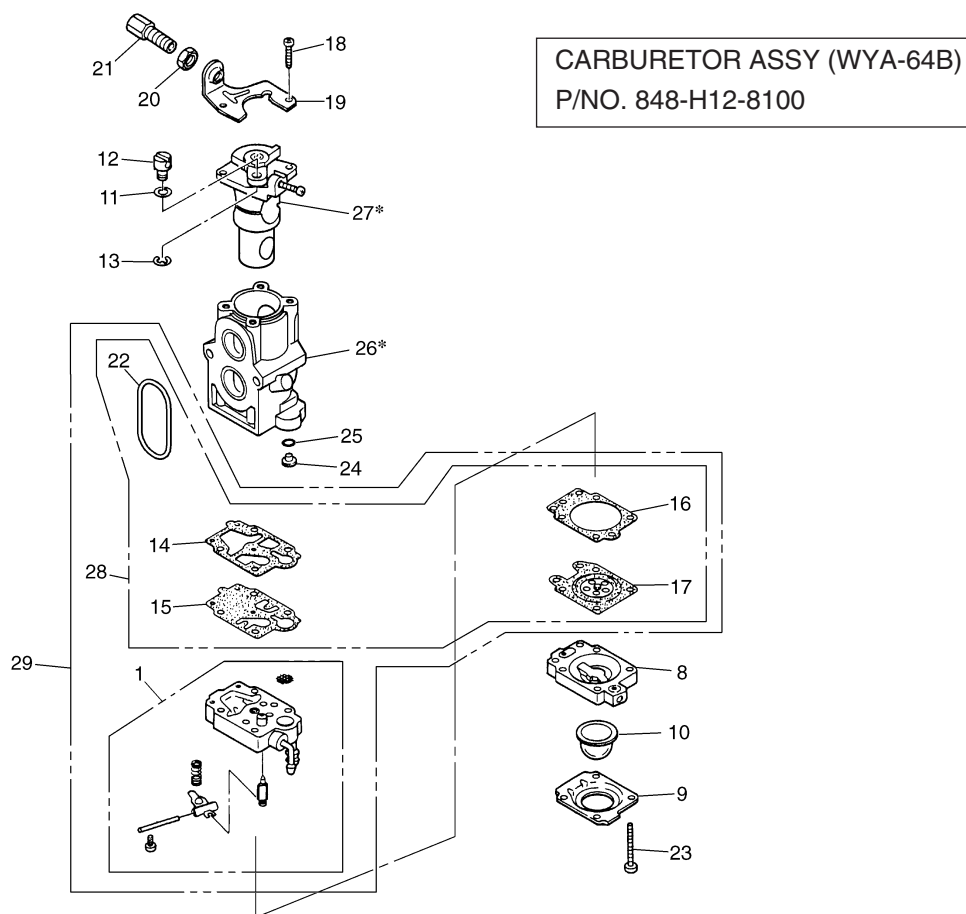


Fig.2 ENGINE GROUP

Key#	Part Number	Description	Q'ty	Key#	Part Number	Description	Q'ty
1	4500-81910	COVER	1				
2	577 25 73-01	CYLINDER ASSY	1	61	576 59 40-01	RECOIL ASSY	1
3	576 58 94-01	GASKET	1	62	576 59 42-01	• REEL	1
4	4820-12130	BOLT	4	63	848-H00-75B0	• SPRING	1
5	576 58 95-01	PLATE	1	64	4500-75150	• SCREW	1
6	T4960-50810	SCREW	2	65	577 05 31-01	• ROPE	1
7	576 58 96-01	GROMMET	1	66	848-H00-75J0	• KNOB	1
8	578 10 83-01	INSULATOR	1	67	848-H00-75Z0	• COVER	1
9	576 58 98-01	BOLT	4	68	848-H00-75M1	• WASHER	1
10	577 35 78-01	GASKET	1	69	848-H00-75W1	• WASHER	1
11	577 08 96-01	GASKET	1	70	848-H00-75L2	• SPRING	1
12	577 95 35-01	MUFFLER ASSY	1	71	848-H00-75K2	• PLATE	1
13	576 59 05-01	• SPARK ARRESTER	1	72	4820-32120	BOLT	4
14	576 59 06-01	• DIFFUSOR	1	73	848-H12-8100	CARBURETTOR	1
15	T4950-40800	• BOLT	4	74	4820-82310	BOLT	2
16	576 59 07-01	BOLT	2	75	576 59 45-01	CUP ASSY	1
17	576 59 08-01	BOLT	1	76	576 59 47-01	• PLATE, CHOKE	1
18	576 59 09-01	GASKET	1	77	576 59 48-01	• LEVER	1
				78	T1108-82190	• SCREW	1
21	576 59 11-01	CRANKCASE COMP.	1	79	7000-11007	• O-RING	1
				80	576 59 49-01	PLATE	1
23	576 59 16-01	GASKET	1	81	T1108-82190	SCREW	3
24	576 69 62-01	BALL BEARING	2	82	576 56 43-01	BOLT	4
25	848-8AG-2700	SEAL	2				
26	4820-21310	BOLT	4	91	577 08 36-01	SHORT BLOCK	1
27	848-H10-41A2	PISTON	1		577 35 78-01	• GASKET (#10)	1
28	848-8C4-8200	PISTON RING	2		577 08 96-01	• GASKET (#11)	1
29	848-8BC-4200	PISTON PIN	1		576 59 09-01	• GASKET (#18)	1
30	848-8T3-1300	SNAP-RING	2	92	577 08 38-01	CRANKCASE ASSY (Key# 21, 23, 24 & 25)	1
31	576 69 64-01	BEARING	1				
32	848-873-C000	WASHER	2	93	2750-96240	GAUGE	1
33	576 59 19-01	CRANKSHAFT COMP.	1	94	577 40 97-01	PULLER ASSY	1
34	57659 27-01	COUPLING	1	95	1101-96220	ROD ASSY	1
35	1400-43230	NUT	2	96	577 40 98-01	BEARING GUIDE	1
36	1000-43240	KEY	2	97	577 40 99-01	OIL SEAL GUIDE	1
				98	577 41 01-01	SUPPORT CRANK CASE-S	1
42	576 59 30-01	ROTOR ASSY	1	99	577 41 00-01	SUPPORT CRANK CASE-F	1
43	576 59 32-01	• RATCHET	2	100	2850-96410	TORX WRENCH	1
44	576 59 33-01	• SPRING	2	101	577 08 37-01	GASKET KIT (Key# 3,10,11,18 & 23)	1
45	0308-00040	• RING	2				
46	576 59 34-01	COIL ASSY	1				
47	576 59 36-01	• CAP, PLUG	1				
48	1400-72121	• SPRING	1				
49	576 59 37-01	• TUBE	1				
50	5500-72130	• GROMMET	1				
51	848-814-2200	BOLT TORX	2				
52	T1700-71260	SPACER	2				
53	576 59 38-01	CORD	1				
54	3699-91867	SPARK PLUG CMR7H	1				

EBZ7500

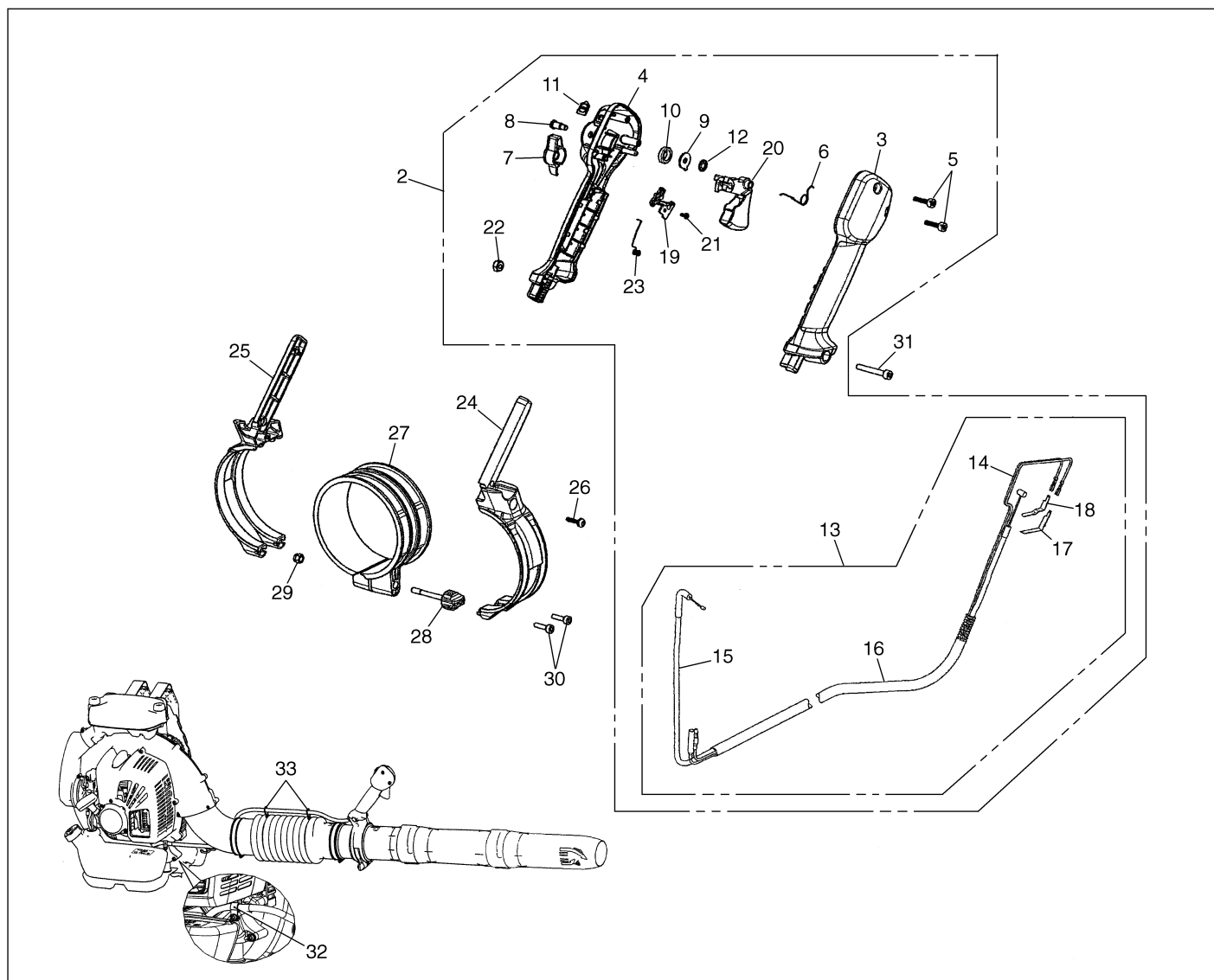
Fig.3 CARBURETOR COMPONENTS



Key#	Part Number	Description	Q'ty	Key#	Part Number	Description	Q'ty
1	T1108-81450	Body assy	1	27*	—	Valve assy	1
8	1850-81490	Body	1	28	848-H18-0620	GASKET KIT	1
9	1850-81520	Cover	1	29	848-H18-0630	REBUILD KIT	1
10	1751-81510	Pump	1				
11	5500-81160	Washer	1				
12	1881-81140	Swivel	1				
13	1751-81130	Ring	1				
14	4810-81410	Gasket	1				
15	1065-81420	Diaphragm	1				
16	1850-81470	Gasket	1				
17	848-HE0-81K0	Diaphragm	1				
18	1752-81110	Screw	2				
19	5500-81120	Bracket	1				
20	1751-81180	Nut	1				
21	1918-81170	Screw	1				
22	848-H00-80A0	Ring, packing	1				
23	1850-81530	Screw	4				
24	848-H12-81P0	Jet #58	1				
25	1751-81240	O-Ring	1				
26*	—	Body	1				

[NOTE]
26*-BODY and 27*-VALVE ASSY are not supplied as an individual part respectively, but supplied as a CARBURETOR ASSY (P/NO. 848-H12-8100).

Fig.4 LEVER SET



Key#	Part Number	Description	Q'ty	Key#	Part Number	Description	Q'ty
2	579 42 14-01	LEVER ASSY	1	20	537 17 42-01	• SPRING THROTTLE TRIG	1
3	502 24 49-02	• HANDLE HALF, RIGHT	1	21	848 853 0610	• SCREW, 3x6	1
4	502 24 48-02	• HANDLE HALF, LEFT	1	22	848-860-5020	• NUT	1
5	848-824-1800	• SCREW, 4x18 Torx T-27	2	23	505 56 79-01	• SPRING	1
6	502 24 54-02	• TRIGGER	1	24	577 24 17-01	HANDLE HOLDER, RIGHT	1
7	502 24 55-02	• CONTROL	1	25	577 24 18-01	HANDLE HOLDER, LEFT	1
8	537 14 12-03	• SHAFT PIVOT	1	26	848-824-1600	SCREW	1
9	848-L5W-34W0	• WASHER	1	27	576 56 54-01	COLLAR	1
10	537 37 39-01	• SPRING, RUBBER	1	28	576 56 55-01	KNOB	1
11	848-L5W-34R0	• PLATE, LOCK	1	29	3310-53331	NUT	1
12	735 58 35-01	• WASHER, PUSH-ON TYPE P	1	30	4820-72150	BOLT	2
13	576 78 56-01	• WIRING ASSY	1	31	848-815-3500	SCREW, M5x35 Torx T-27	1
14	576 78 57-01	•• CORD COMP	1	32	848-8K9-0070	CLIP	1
15	576 78 58-01	•• CABLE, COMP	1	33	848-L59-65G0	CLAMP	2
16	577 75 69-01	•• TUBE	1				
17	537 22 62-01	•• CONNECTOR	1				
18	537 22 63-01	•• CONNECTOR	1				
19	848-L5W-34X1	• RETAINER, CONTACT PLATE	1				