

# PARTS LIST

## DUSTERS/MISTERS

**MD431A**  
**MD431D**  
**MD431M**

**NOTE :**

1. Use KOMATSU ZENOAH genuine parts specified in the parts list for repair and/or replacement.
2. KOMATSU ZENOAH does not warrant the machines, those which have been damaged by the use of any parts other than those specified by the company.
3. When placing orders of parts for repair and/or replacement, check if the model name and the serial number are suitable to those specified in the parts list, then use parts number described in the parts list.
4. The contents described in the parts list are as of July 1997 may change due to improvement.
5. The parts for the machine shall be supplied within ten (10) years after the machine is discontinued.  
[It is possible that some specific parts may be subject to change of their delivery term and list price within the limit of ten (10) years after the machine is discontinued. And it is also possible that some parts may be available even after the limit of ten (10) years.]

**APPLICABLE SERIAL NUMBERS :**

|        |        |        |
|--------|--------|--------|
| MD431A | 809607 | and up |
| MD431D | 809607 | and up |
| MD431M | 809607 | and up |

**APRIL 1998**

Fig.1 POWER UNIT

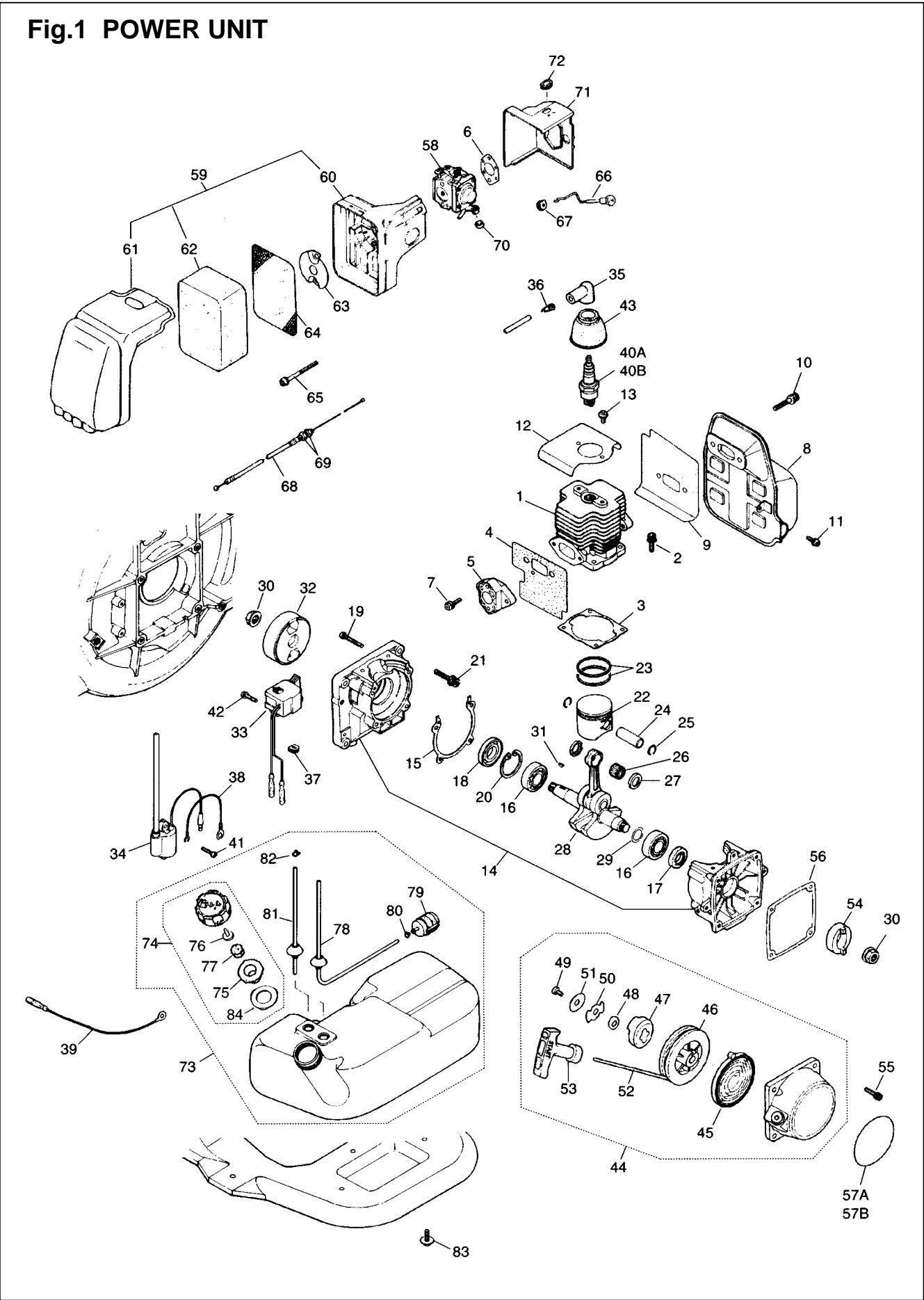
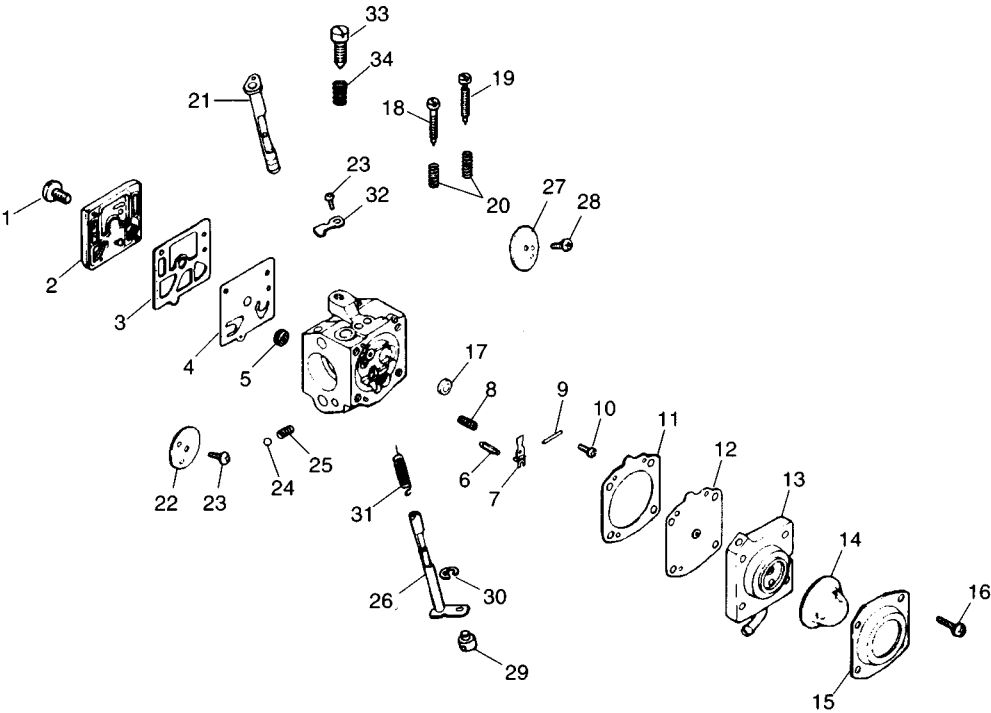


Fig.1 POWER UNIT

| Key# | PART NUMBER | DESCRIPTION     | Q'TY /UNIT | NOTE | Key# | PART NUMBER | DESCRIPTION      | Q'TY /UNIT | NOTE   |
|------|-------------|-----------------|------------|------|------|-------------|------------------|------------|--------|
| 1    | 1490-12113  | CYLINDER        | 1          |      | 48   | 1861-75150  | WASHER           | 1          |        |
| 2    | 3495-12280  | BOLT            | 4          |      | 49   | 1483-75270  | SCREW            | 1          |        |
| 3    | 1400-13121  | GASKET          | 1          |      | 50   | 1487-75160  | RETAINER         | 1          |        |
| 4    | 1491-13132  | GASKET          | 1          |      | 51   | 1487-75170  | WASHER           | 1          |        |
| 5    | 1491-14113  | INSULATOR       | 1          |      | 52   | 1400-75160  | ROPE             | 1          |        |
| 6    | 1491-13151  | GASKET          | 1          |      | 53   | 1400-75170  | KNOB             | 1          |        |
| 7    | 1491-14120  | BOLT M5 x 25    | 2          |      | 54   | 1487-75211  | PULLEY           | 1          |        |
| 8    | 1491-15112  | MUFFLER         | 1          |      | 55   | 3460-75510  | BOLT             | 4          |        |
| 9    | 1487-13140  | GASKET          | 1          |      | 57A  | 1491-75712  | LABEL            | 1          | MD431  |
| 10   | 1491-15210  | BOLT M6 x 35    | 2          |      | 57B  | 1491-75752  | LABEL            | 1          | MD431M |
| 11   | 1491-32120  | BOLT M5 x 12    | 1          |      | 58   | 1491-85001  | CABURETOR ASSY   | 1          | HDA80A |
| 12   | 1491-32110  | CYLINDER COVER  | 1          |      | 59   | 1487-82100  | AIR CLEANER ASSY | 1          |        |
| 13   | 1491-32120  | BOLT            | 2          |      | 60   | 1487-82111  | BODY             | 1          |        |
| 14   | 1497-21101  | CRANKCASE COMP  | 1          |      | 61   | 1487-82121  | COVER            | 1          |        |
| 15   | 1400-21140  | GASKET          | 1          |      | 62   | 1491-82311  | ELEMENT          | 1          |        |
| 16   | 06030-06202 | BEARING         | 2          |      | 63   | 1484-82510  | SHUT PLATE       | 1          |        |
| 17   | 1520-21220  | OIL SEAL        | 1          |      | 64   | 1491-82351  | SCREEN           | 1          |        |
| 18   | 1400-21220  | OIL SEAL        | 1          |      | 65   | 0263-30555  | SCREEN           | 2          |        |
| 19   | 01252-30530 | BOLT M5 x 30    | 4          |      | 66   | 1491-82811  | CHOKE ROD        | 1          |        |
| 20   | 04065-03515 | RING            | 1          |      | 67   | 3320-33310  | GROMMET          | 1          |        |
| 21   | 1491-21511  | BOLT            | 4          |      | 68   | 1491-83100  | CABLE COMP       | 1          |        |
| 22   | 1483-41110  | PISTON          | 1          |      | 69   | 0280-10605  | NUT              | 2          |        |
| 23   | 1400-41220  | RING            | 2          |      | 70   | 1601-81810  | CAP              | 1          |        |
| 24   | 1490-41310  | PIN             | 1          |      | 71   | 1491-82611  | COVER            | 1          |        |
| 25   | 3350-41320  | SNAP RING       | 2          |      | 72   | 1491-82620  | GROMMET          | 1          |        |
| 26   | 1400-41410  | BEARING         | 1          |      | 73   | 3490-23006  | TANK ASSY        | 1          |        |
| 27   | 2616-41510  | WASHER          | 2          |      | 74   | 3490-23203  | CAP ASSY         | 1          |        |
| 28   | 1400-42002  | CRANKSHAFT COMP | 1          |      | 75   | 3490-23221  | INNER CAP        | 1          |        |
| 29   | 1300-42410  | SHIM            | 0/1        |      | 76   | 3490-23231  | SCREW            | 1          |        |
| 30   | 1400-43230  | NUT             | 2          |      | 77   | 1030-85140  | ELEMENT          | 1          |        |
| 31   | 1000-43240  | KEY             | 1          |      | 78   | 1696-85400  | SUCTION PIPE     | 1          |        |
| 32   | 1490-71110  | ROTOR           | 1          |      | 79   | 3302-85400  | FILTER ASSY      | 1          |        |
| 33   | 3468-71212  | SOURCE COIL     | 1          |      | 80   | 1260-85460  | CLIP             | 1          |        |
| 34   | 1491-71310  | IGNITION COIL   | 1          |      | 81   | 3490-23500  | PIPE ASSY        | 1          |        |
| 35   | 1900-72111  | CAP             | 1          |      | 82   | 1100-86120  | CLIP             | 1          |        |
| 36   | 1900-72120  | SPRING          | 1          |      | 83   | 3490-23611  | SCREW            | 2          |        |
| 37   | 1130-72120  | GROMMET         | 1          |      | 84   | 1600-85322  | PACKING          | 1          |        |
| 38   | 1491-71510  | CORD, earth     | 1          |      |      |             |                  |            |        |
| 39   | 1491-72610  | CORD, switch    | 1          |      |      |             |                  |            |        |
| 40   | 0400-02103  | SPARK PLUG B7S  | 1          |      |      |             |                  |            |        |
| 41   | 0277-10416  | SCREW           | 2          |      |      |             |                  |            |        |
| 42   | 1565-72211  | BOLT M4 x 16    | 2          |      |      |             |                  |            |        |
| 43   | 1333-71220  | CAP             | 1          |      |      |             |                  |            |        |
| 44   | 1487-75100  | RECOIL ASSY     | 1          |      |      |             |                  |            |        |
| 45   | 1180-75221  | SPRING          | 1          |      |      |             |                  |            |        |
| 46   | 1487-75120  | REEL            | 1          |      |      |             |                  |            |        |
| 47   | 1487-75140  | DOG             | 1          |      |      |             |                  |            |        |

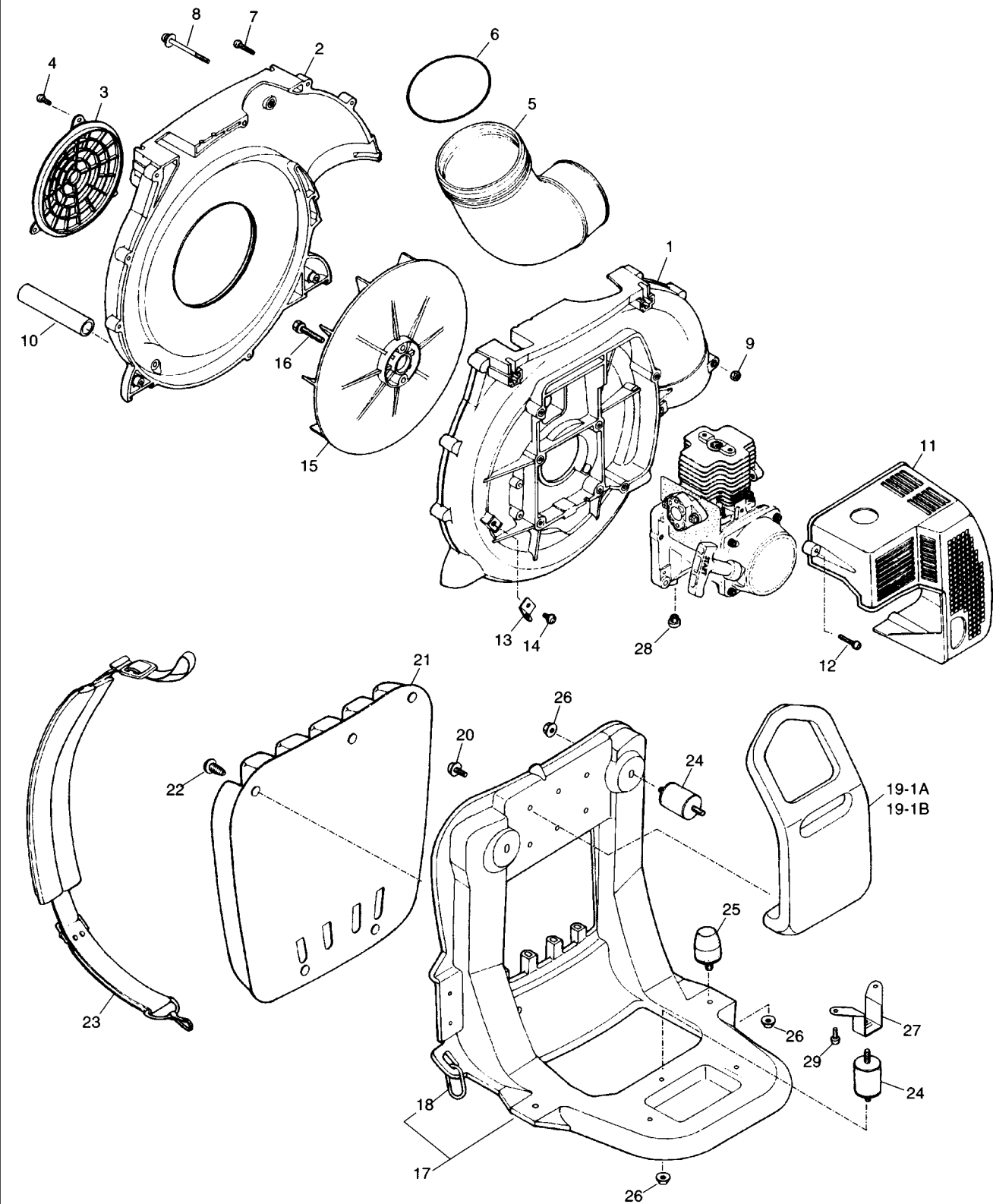
Fig.2 CARBURETOR



### Fig.2 CARBURETOR

[illegible]

Fig.3 BLOWER UNIT



### Fig.3 BLOWER UNIT

[illegible]

Fig.4 DUSTER UNIT & CONTROL UNIT

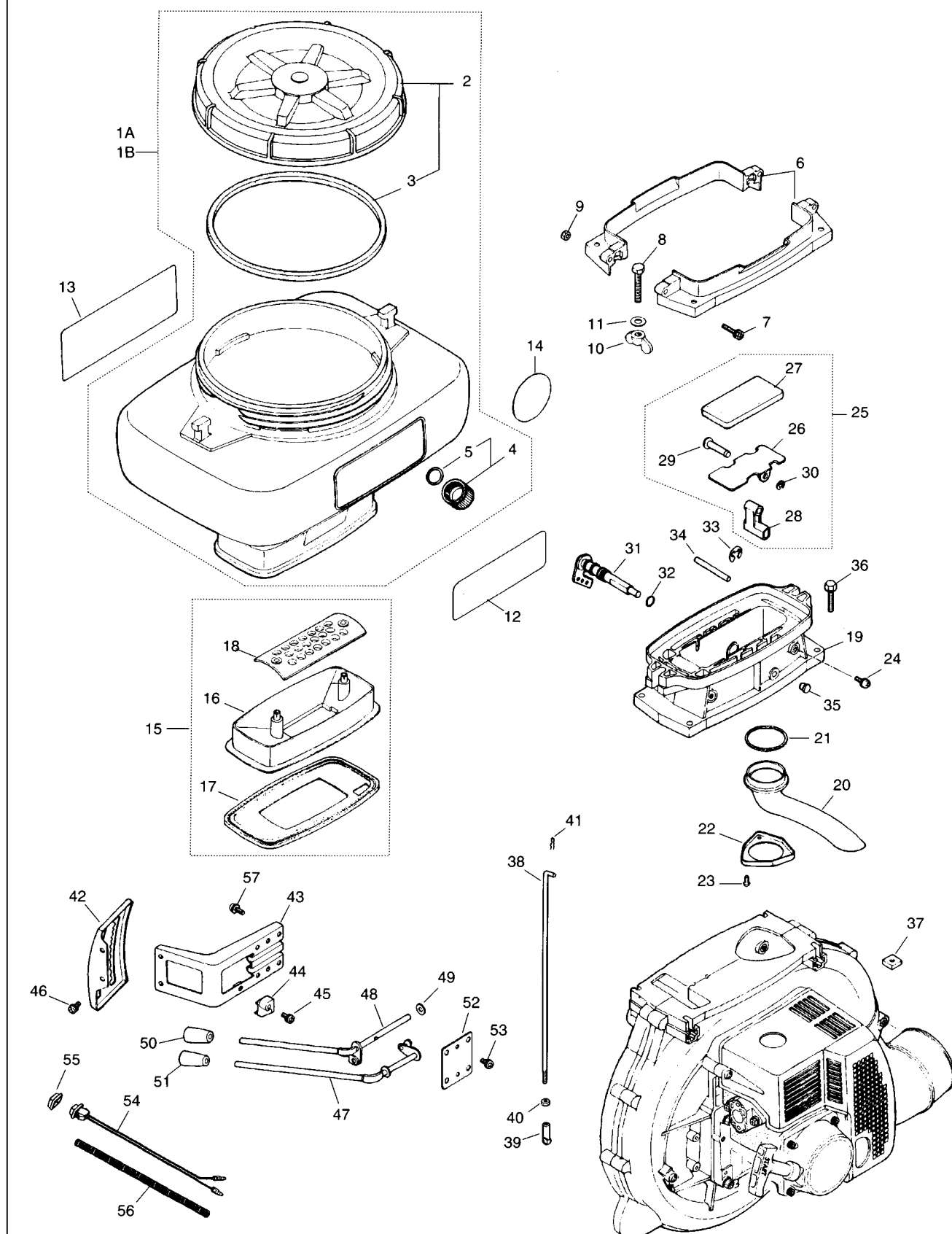
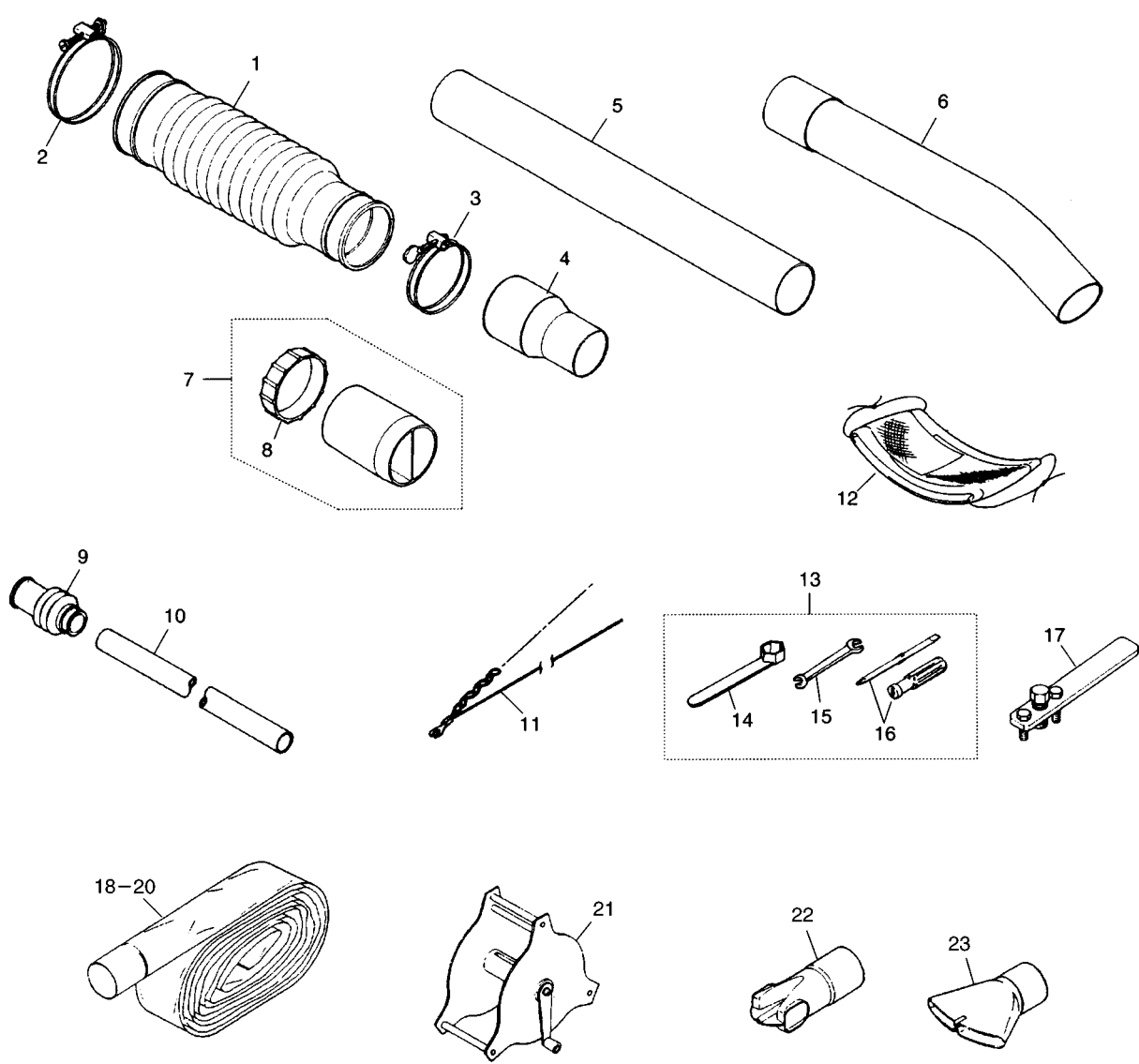




Fig.4 DUSTER UNIT &amp; CONTROL UNIT

| Key# | PART NUMBER | DESCRIPTION    | Q'TY /UNIT | NOTE     | Key# | PART NUMBER | DESCRIPTION         | Q'TY /UNIT | NOTE |
|------|-------------|----------------|------------|----------|------|-------------|---------------------|------------|------|
| 1A   | 3460-31004  | TANK ASSY 14 Ø | 1          | MD431A14 | 48   | 3468-25220  | LEVER, throttle     | 1          |      |
| 1B   | 3475-31004  | TANK ASSY 23 Ø | 1          | MD431-23 | 49   | 3063-21570  | WASHER              | 1          |      |
| 2    | 3460-31204  | CAP ASSY       | 1          |          | 50   | 3063-21593  | KNOB, throttle      | 1          |      |
| 3    | 3460-31223  | GASKET         | 1          |          | 51   | 3460-25250  | KNOB, shutter lever | 1          |      |
| 4    | 3460-31300  | CAP ASSY       | 1          |          | 52   | 3460-25311  | PLATE               | 1          |      |
| 5    | 3460-31320  | GASKET         | 1          |          | 53   | 0263-30512  | SCREW               | 2          |      |
| 6    | 3461-31511  | CLAMP          | 2          |          | 54   | 3460-25510  | SWITCH              | 1          |      |
| 7    | 3468-31531  | BOLT           | 2          |          | 55   | 1601-72411  | CAP                 | 1          |      |
| 8    | 3460-31520  | BOLT           | 2          |          | 56   | 3460-25810  | TUBE                | 1          |      |
| 9    | 0280-70605  | NUT            | 2          |          | 57   | 3468-25320  | SCREW               | 4          |      |
| 10   | 3063-31180  | WING NUT       | 2          |          |      |             |                     |            |      |
| 11   | 2031-42110  | WASHER         | 2          |          |      |             |                     |            |      |
| 12   | 3461-31812  | LABEL          | 1          |          |      |             |                     |            |      |
| 13   | 3460-31912  | LABEL, CAUTION | 1          |          |      |             |                     |            |      |
| 15   | 3460-14102  | COVER ASSY     | 1          |          |      |             |                     |            |      |
| 16   | 3460-14112  | COVER          | 1          |          |      |             |                     |            |      |
| 17   | 3460-14122  | GASKET         | 1          |          |      |             |                     |            |      |
| 18   | 3460-14130  | PLATE          | 1          |          |      |             |                     |            |      |
| 19   | 3461-13113  | CASE, shutter  | 1          |          |      |             |                     |            |      |
| 20   | 3468-13120  | PIPE, guide    | 1          |          |      |             |                     |            |      |
| 21   | 3460-13130  | GASKET         | 1          |          |      |             |                     |            |      |
| 22   | 3468-13140  | COVER          | 1          |          |      |             |                     |            |      |
| 23   | 3468-13150  | SCREW          | 3          |          |      |             |                     |            |      |
| 24   | 0263-30512  | SCREW          | 2          |          |      |             |                     |            |      |
| 25   | 3460-13302  | SHUTTER ASSY   | 1          |          |      |             |                     |            |      |
| 26   | 3460-13312  | SHUTTER        | 1          |          |      |             |                     |            |      |
| 27   | 3460-13322  | COVER, shutter | 1          |          |      |             |                     |            |      |
| 28   | 3460-13330  | ARM            | 1          |          |      |             |                     |            |      |
| 29   | 3460-13340  | PIN            | 1          |          |      |             |                     |            |      |
| 30   | 3422-61150  | RING, snap     | 1          |          |      |             |                     |            |      |
| 31   | 3460-13411  | SHAFT          | 1          |          |      |             |                     |            |      |
| 32   | 07000-02010 | O-RING         | 1          |          |      |             |                     |            |      |
| 33   | 3460-13430  | RING, snap     | 1          |          |      |             |                     |            |      |
| 34   | 3460-13610  | BAR            | 1          |          |      |             |                     |            |      |
| 35   | 3460-13450  | PLUG           | 1          |          |      |             |                     |            |      |
| 36   | 3468-12210  | BOLT           | 4          |          |      |             |                     |            |      |
| 37   | 3468-13130  | NUT            | 4          |          |      |             |                     |            |      |
| 38   | 3468-25410  | ROD            | 1          |          |      |             |                     |            |      |
| 39   | 3063-21721  | JOINT, ball    | 1          |          |      |             |                     |            |      |
| 40   | 0280-70504  | NUT            | 1          |          |      |             |                     |            |      |
| 41   | 3468-25420  | PIN, snap      | 1          |          |      |             |                     |            |      |
| 42   | 3460-25112  | INDICATOR      | 1          |          |      |             |                     |            |      |
| 43   | 3460-25130  | BRACKET, lever | 1          |          |      |             |                     |            |      |
| 44   | 3460-25140  | BRACKET, cable | 1          |          |      |             |                     |            |      |
| 45   | 0263-30512  | SCREW          | 1          |          |      |             |                     |            |      |
| 46   | 0263-30512  | SCREW          | 2          |          |      |             |                     |            |      |
| 47   | 3468-25210  | LEVER, shutter | 1          |          |      |             |                     |            |      |

Fig.5 ACCESSORIES & TOOLS



### Fig.5 ACCESSORIES & TOOLS

[illegible]



# **KOMATSU ZENOAHI CO.**

1-9 Minamidai, Kawagoe, Saitama, 350-1192 Japan

---