



# PARTS LIST

**CHAIN SAW**

**G2200T**

**NOTE :**

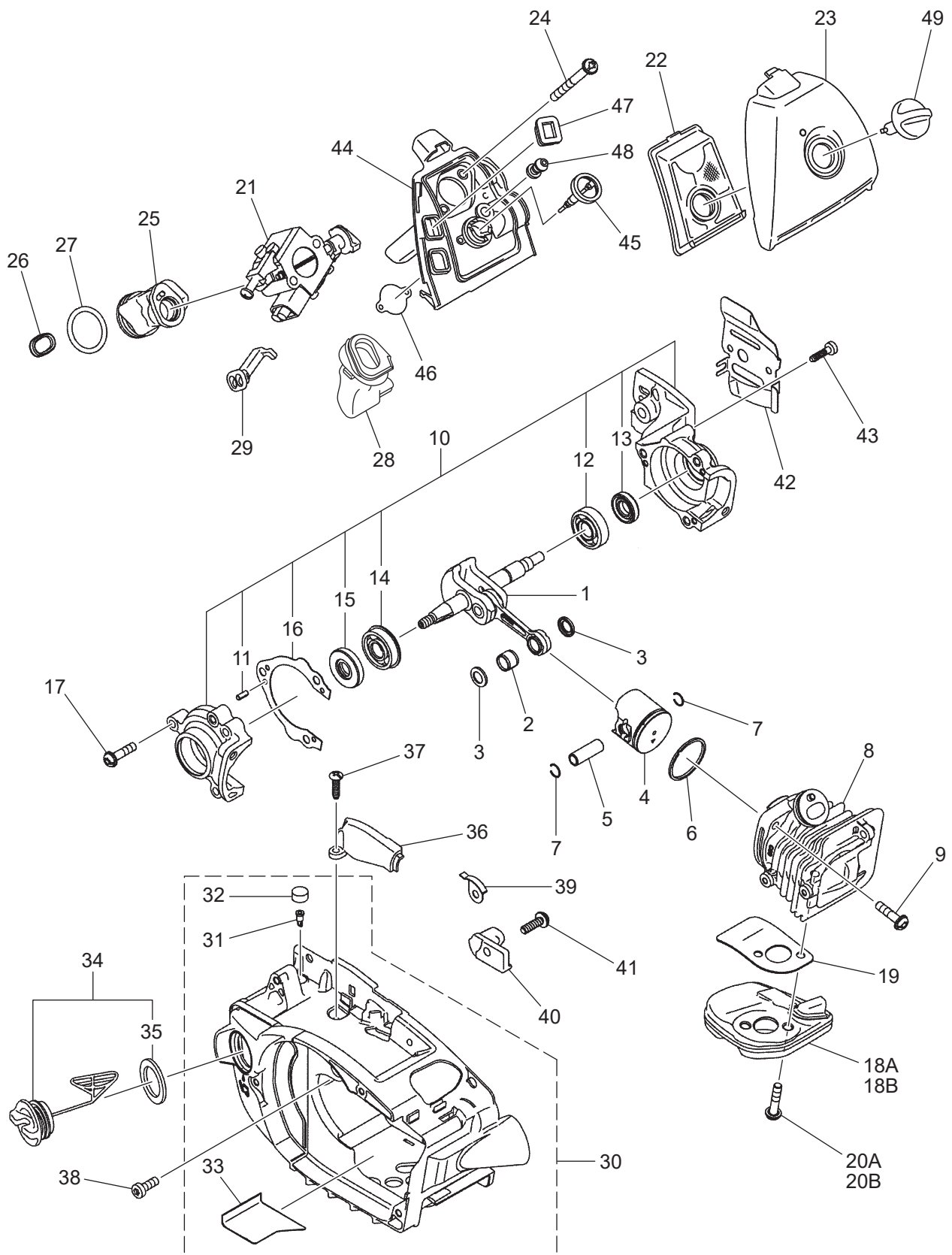
1. Use HUSQVARNA ZENOAH genuine parts specified in the parts list for repair and/or replacement.
2. HUSQVARNA ZENOAH does not warrant the machines, those which have been damaged by the use of any parts other than those specified by the company.
3. When placing orders of parts for repair and/or replacement, check if the model name and the serial number are suitable to those specified in the parts list, then use parts number described in the parts list.
4. The contents described in the parts list may change due to improvement.
5. The parts for the machine shall be supplied within ten (10) years after the machine is discontinued. [It is possible that some specific parts may be subject to change of their delivery term and list price within the limit of ten (10) years after the machine is discontinued. And it is also possible that some parts may be available even after the limit of ten (10) years.]

APPLICABLE SERIAL NUMBERS:

2016 4400001 and up

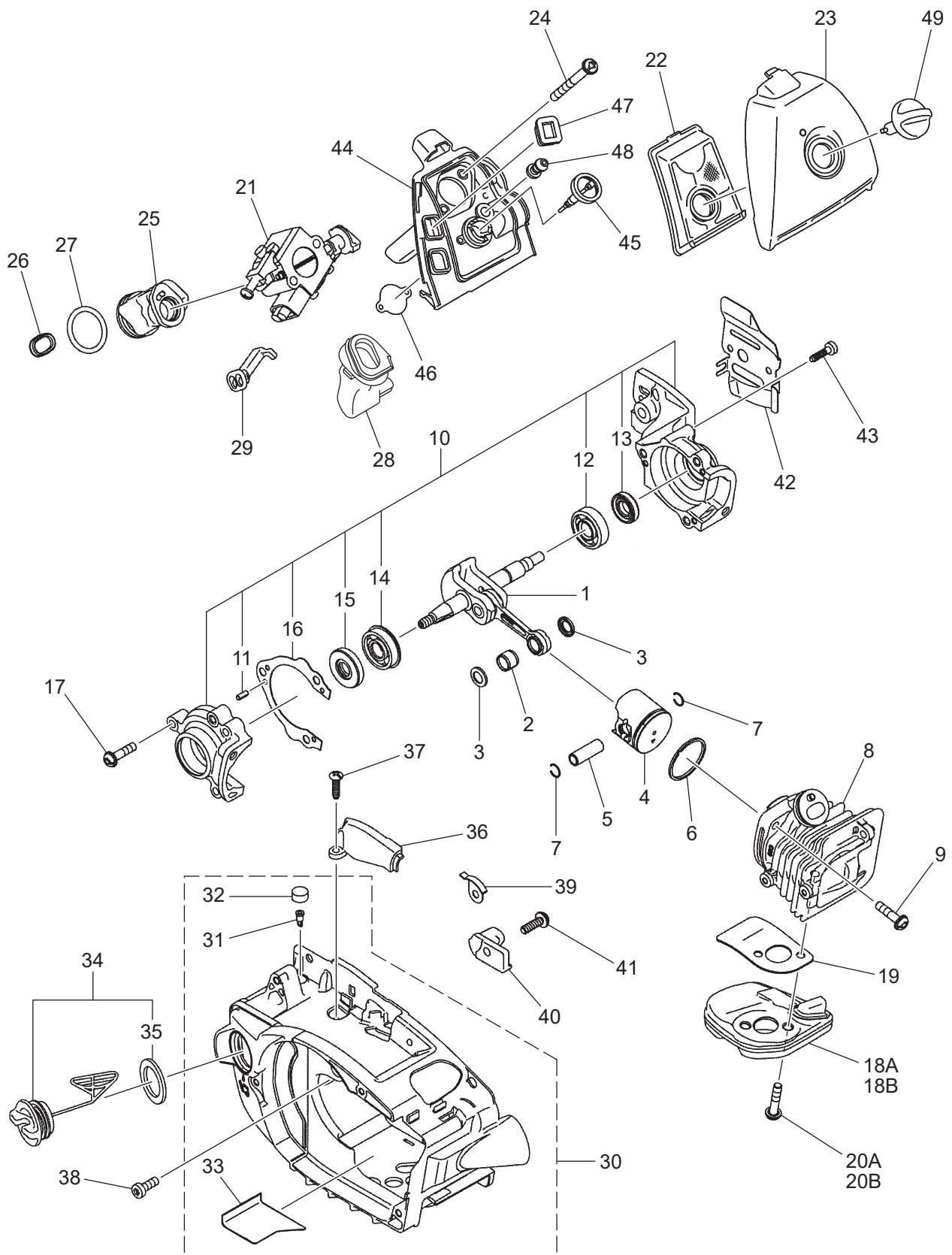
March 2020

Fig.1 ENGINE PARTS



**Fig. 1 G2200T**
**ENGINE PARTS**

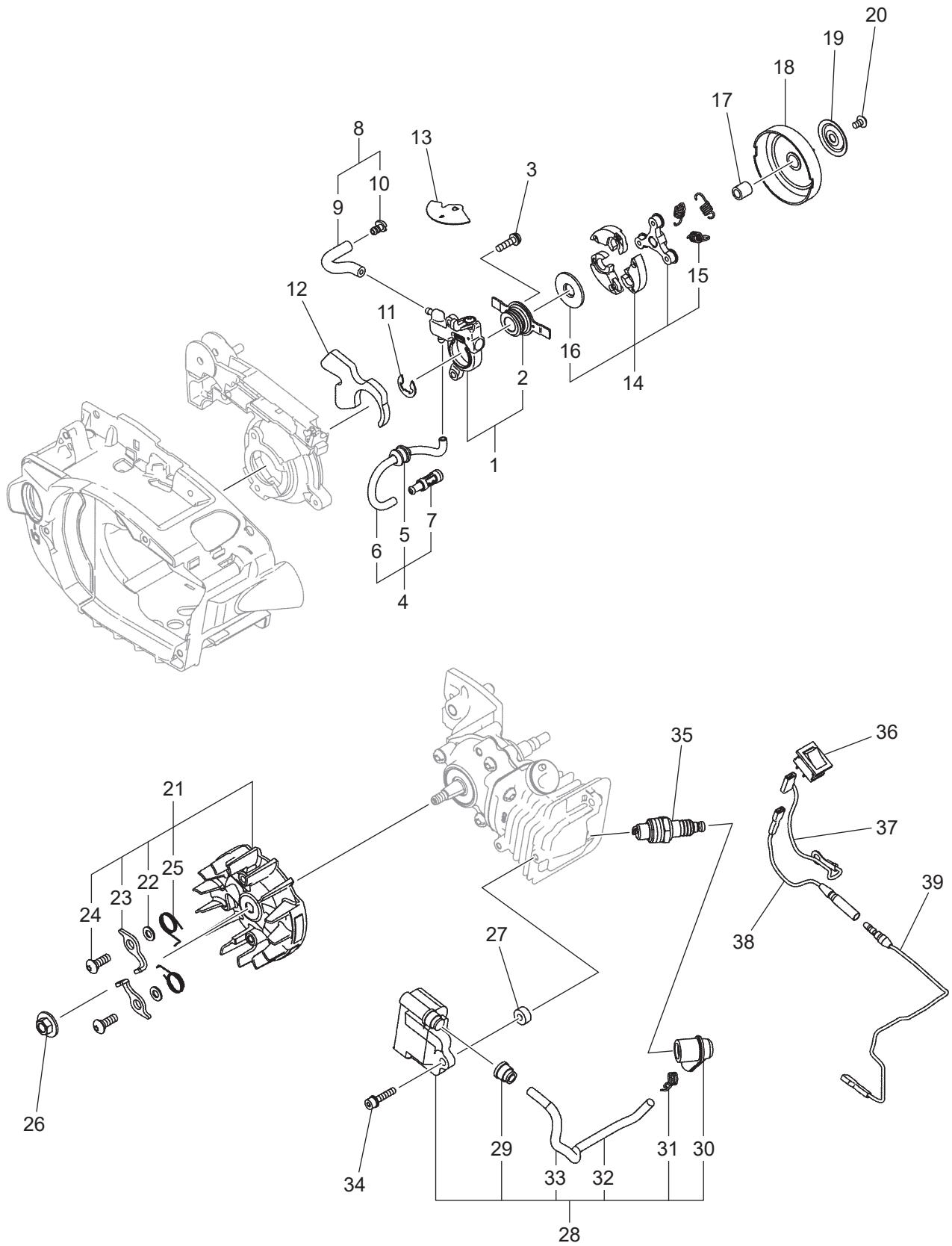
| Key# | PART NUMBER  | DESCRIPTION            | Q'TY | REMARKS                           |
|------|--------------|------------------------|------|-----------------------------------|
| 1    | 848C004201   | CRANKSHAFT COMP        | 1    |                                   |
| 2    | 5500-41410   | BEARING                | 1    |                                   |
| 3    | 1101-41340   | WASHER                 | 2    |                                   |
| 4    | 848C0041A0   | PISTON                 | 1    |                                   |
| 5    | 1900-41310   | PIN                    | 1    |                                   |
| 6    | 848C0041D0   | RING, PISTON           | 1    |                                   |
| 7    | 1260-41320   | RING                   | 2    |                                   |
| 8    | 576 14 76-01 | CYLINDER ASSY          | 1    |                                   |
| 9    | 8488152030   | BOLT                   | 2    | M5x20L-T27                        |
| 10   | 585 92 78-01 | CRANKCASE ASSY         | 1    |                                   |
| 11   | 2629-21130   | • PIN                  | 3    |                                   |
| 12   | T1600-21240  | • BEARING              | 1    | 10x26x8                           |
| 13   | 8488AA2000   | • OIL SEAL             | 1    | 10x20x5                           |
| 14   | 84889A2600   | • BEARING              | 1    | 10x26x8-F                         |
| 15   | 8488AA2600   | • OIL SEAL             | 1    | 10x26x5                           |
| 16   | 576 13 44-01 | • GASKET, CRANKCASE    | 1    |                                   |
| 17   | 8488152030   | BOLT                   | 3    | M5x20L-T27                        |
| 18A  | 582 64 25-01 | MUFFLER                | 1    | - S/N 2020 0599999                |
| 18B  | 582 54 31-01 | MUFFLER                | 1    | S/N 2020 0600001-                 |
| 19   | 848C0015C1   | GASKET                 | 1    |                                   |
| 20A  | 8488152300   | BOLT                   | 2    | M5x23L-T27,<br>- S/N 2020 0599999 |
| 20B  | 8488151400   | BOLT                   | 2    | M5x14L-T27,<br>S/N 2020 0600001-  |
| 21   | 582 54 84-01 | CARBURETTOR ASSY       | 1    | WT-1187                           |
| 22   | 582 54 52-01 | AIR FILTER             | 1    |                                   |
| 23   | 582 17 40-01 | AIR FILTER COVER       | 1    |                                   |
| 24   | 586 96 85-01 | SCREW                  | 2    | M5x40L-T27                        |
| 25   | 848C0014A1   | PIPE                   | 1    |                                   |
| 26   | 576 47 54-01 | RING, COMP             | 1    |                                   |
| 27   | 2880-14120   | SPRING                 | 1    |                                   |
| 28   | 585 69 72-01 | PIPE, AIR              | 1    |                                   |
| 29   | 848C0082C0   | GUIDE                  | 1    |                                   |
| 30   | 586 18 50-01 | CASE, ENGINE ASSY      | 1    |                                   |
| 31   | 2850-21260   | • AIR CONTROL BREATHER | 1    |                                   |
| 32   | 2841-31410   | • BREATHER SEAL        | 1    |                                   |
| 33   | 848C0031R0   | • TAPE                 | 1    |                                   |
| 34   | 848C208511   | CAP ASSY               | 1    | GLAY                              |
| 35   | 2841-31820   | • GASKET               | 1    |                                   |
| 36   | 848C0031D2   | COVER                  | 1    |                                   |
| 37   | 8488241600   | SCREW                  | 1    | TP4x16L-T27                       |
| 38   | 8488151400   | BOLT                   | 1    | M5x14L-T27                        |
| 39   | 848C0031M1   | GASKET                 | 1    |                                   |
| 40   | 848C3066F2   | CHAIN CATCHER          | 1    |                                   |
| 41   | 8488251601   | SCREW                  | 1    | TP5x14L-T27                       |

**Fig.1 ENGINE PARTS**

## ENGINE PARTS

---

4

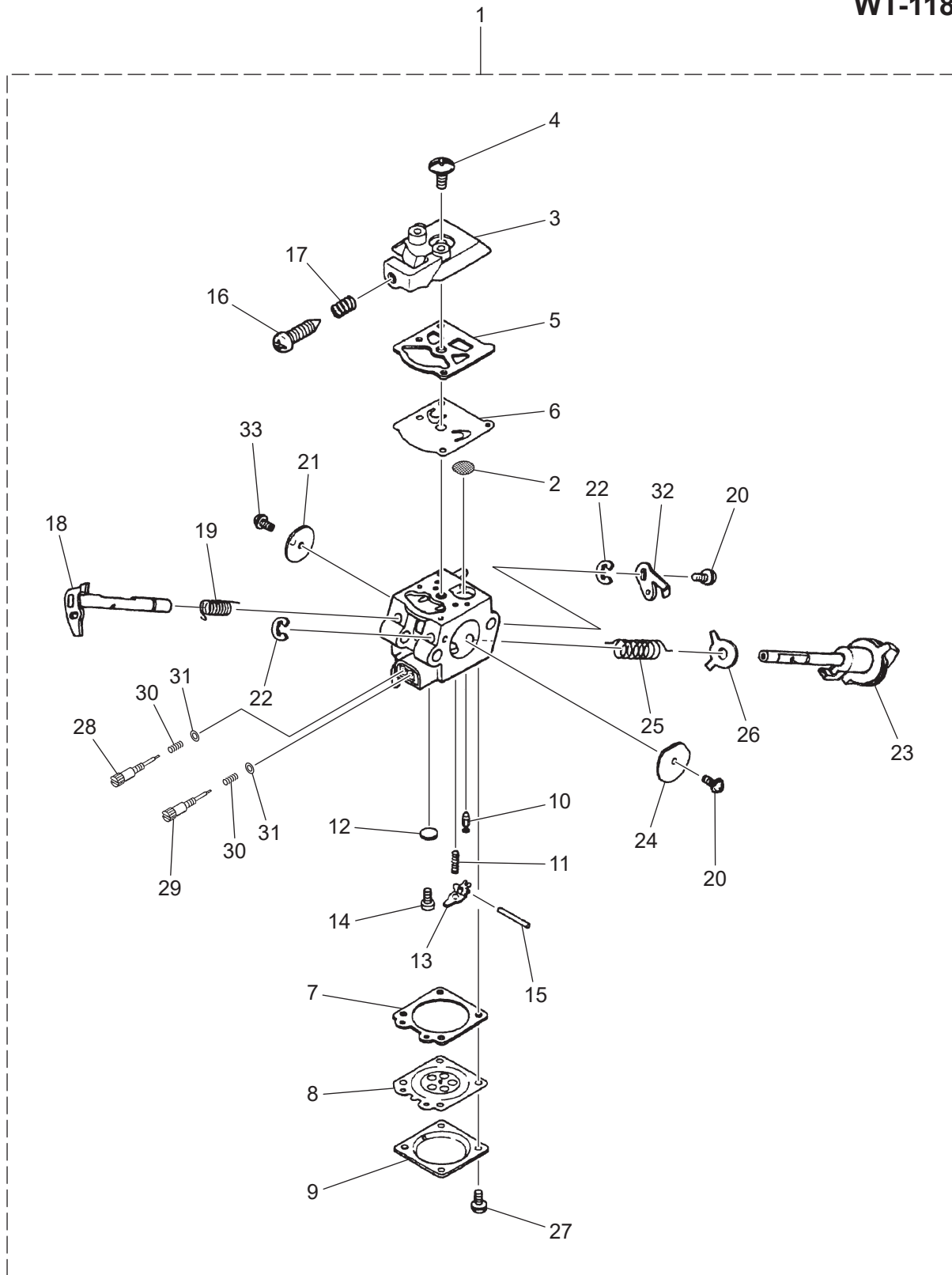
**Fig.2 OIL PUMP, CLUTCH, IGNITION SYSTEM**

**Fig. 2 G2200T****OIL PUMP, CLUTCH, IGNITION SYSTEM**

| Key# | PART NUMBER  | DESCRIPTION   | Q'TY | REMARKS    |
|------|--------------|---------------|------|------------|
| 1    | 848C006700   | OIL PUMP ASSY | 1    |            |
| 2    | 848C006751   | • WORM GEAR   | 1    |            |
| 3    | 585 69 82-01 | BOLT          | 2    | M4x15L-T27 |
| 4    | 848C006731   | PIPE ASSY     | 1    |            |
| 5    | 848C0067K0   | • GROMMET     | 1    |            |
| 6    | 8488G21190   | • PIPE        | 1    |            |
| 7    | 848C006740   | • FILTER ASSY | 1    |            |
| 8    | 848C006720   | PIPE COMP     | 1    |            |
| 9    | 8488G30550   | • PIPE        | 1    |            |
| 10   | 3370-31210   | • PIN         | 1    |            |
| 11   | 8488T50800   | RING          | 1    |            |
| 12   | 848C0067Z0   | SEAL          | 1    |            |
| 13   | 848C0067C0   | COVER         | 1    |            |
| 14   | 848C025120   | CLUTCH        | 1    |            |
| 15   | 848C0251E1   | • SPRING      | 3    |            |
| 16   | 848C0051G0   | • PLATE       | 1    |            |
| 17   | 8488860900   | BEARING       | 1    |            |
| 18   | 582 82 77-01 | DRUM          | 1    | 1/4P-7T    |
| 19   | 848C0051H0   | WASHER        | 1    |            |
| 20   | 8488440600   | SCREW         | 1    | M4x6L-T20  |
| 21   | 848C007110   | ROTOR ASSY    | 1    |            |
| 22   | 2850-71151   | • WASHER      | 2    |            |
| 23   | 848C1471R1   | • PAWL        | 2    |            |
| 24   | 8488151200   | • SCREW       | 2    | M5x12L-T27 |
| 25   | 848C1471S0   | • SPRING      | 2    |            |
| 26   | 2750-32620   | NUT           | 1    | M6xP1.0    |
| 27   | 5500-72150   | SPACER        | 2    |            |
| 28   | 586 96 88-01 | COIL ASSY     | 1    | GLAY       |
| 29   | 2616-71320   | • CAP         | 1    |            |
| 30   | T2070-72210  | • CAP         | 1    |            |
| 31   | 848F0871G0   | • SPRING      | 1    |            |
| 32   | 848C0071D0   | • CORD        | 1    |            |
| 33   | 8488M40030   | • TUBE        | 1    |            |
| 34   | 585 69 83-01 | BOLT          | 2    | M4x20L-T27 |
| 35   | 3699-91871   | SPARKPLUG     | 1    | NGK CMR6A  |
| 36   | 586 24 68-01 | STOP SWITCH   | 1    |            |
| 37   | 8488M10530   | CORD          | 1    | L=125      |
| 38   | 8488M10470   | CORD          | 1    | L=110      |
| 39   | 587 42 21-01 | CORD          | 1    | L=240      |
|      |              |               |      |            |

Fig.3 CARBURETOR

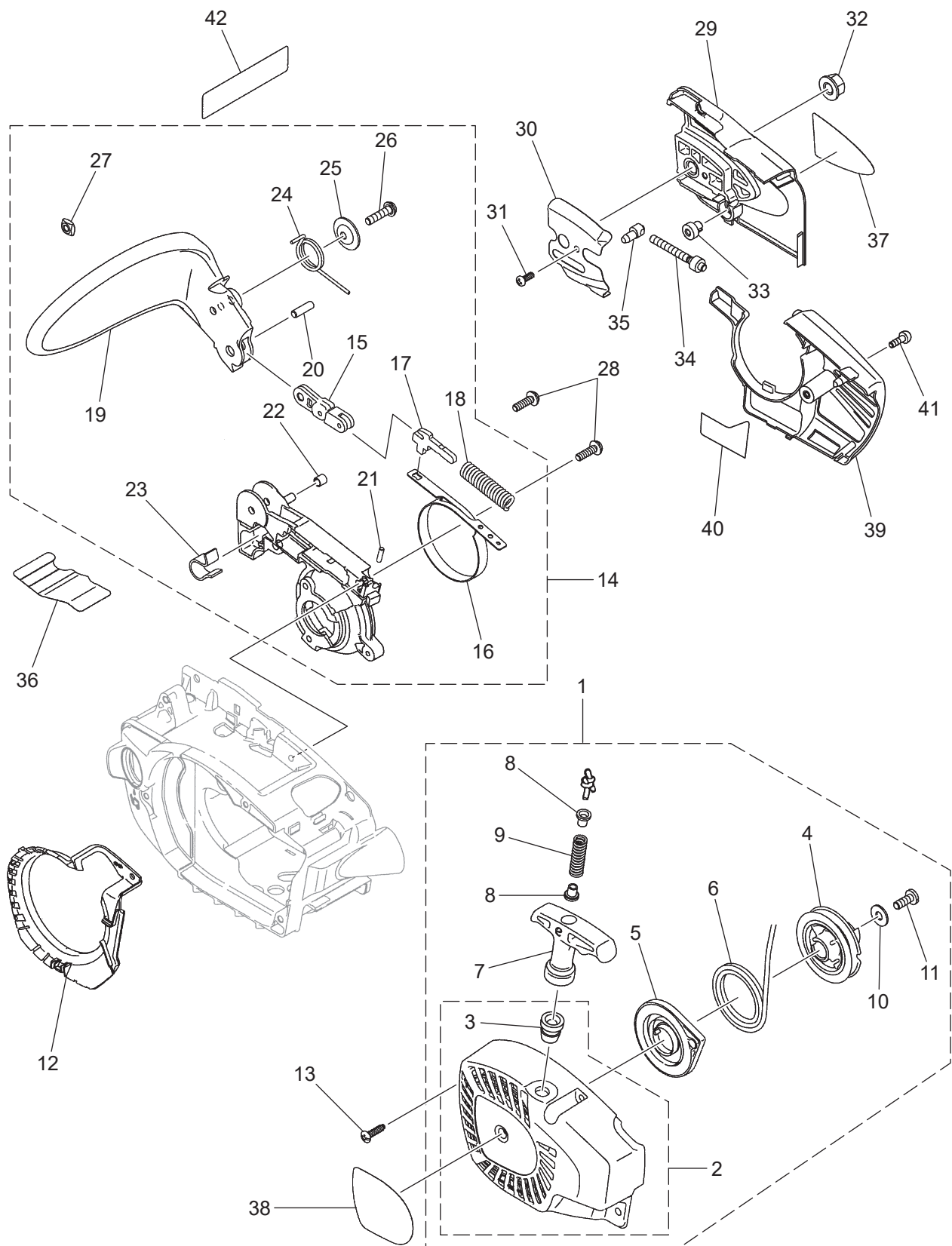
WT-1187





**Fig. 3 G2200T****CARBURETOR**

| Key# | PART NUMBER  | DESCRIPTION            | Q'TY | REMARKS |
|------|--------------|------------------------|------|---------|
| 1    | 582 54 84-01 | CARBURETTOR ASSY       | 1    | WT-1187 |
| 2    | 3306-81380   | • SCREEN               | 1    |         |
| 3    | 848C5A81H0   | • COVER                | 1    |         |
| 4    | 3310-81130   | • SCREW                | 1    |         |
| 5    | 3304-81140   | • GASKET               | 1    |         |
| 6    | 3304-81150   | • DIAPHRAGM            | 1    |         |
| 7    | 2850-81290   | • GASKET, METEER       | 1    |         |
| 8    | 848HE081K0   | • DIAPHRAGM            | 1    |         |
| 9    | 848CE081G0   | • COVER                | 1    |         |
| 10   | 3356-81310   | • VALVE, INLET         | 1    |         |
| 11   | 1488-81370   | • SPRING               | 1    |         |
| 12   | 1480-81420   | • PLUG                 | 1    |         |
| 13   | 3310-81230   | • LEVER                | 1    |         |
| 14   | 3310-81240   | • SCREW                | 1    |         |
| 15   | 3310-81250   | • PIN                  | 1    |         |
| 16   | 2630-81330   | • SCREW                | 1    |         |
| 17   | 3350-81380   | • SPRING               | 1    |         |
| 18   | 587 05 91-01 | • SHAFT ASSY, THROTTLE | 1    |         |
| 19   | 2670-81410   | • SPRING, RETURN       | 1    |         |
| 20   | 2880-81470   | • SCREW                | 2    |         |
| 21   | 589 47 20-01 | • VALVE                | 1    |         |
| 22   | 1148-81390   | • RING                 | 2    |         |
| 23   | 848C0080E0   | • SHAFT CHOKE          | 1    |         |
| 24   | 2841-81451   | • CHOKE VALVE          | 1    |         |
| 25   | 848C0080D0   | • SPRING               | 1    |         |
| 26   | 848C8089D0   | • LEVER                | 1    |         |
| 27   | 3310-81351   | • SCREW ASSY           | 4    |         |
| 28   | 579 49 24-01 | • NEEDLE (L)           | 1    |         |
| 29   | 589 47 21-01 | • NEEDLE (H)           | 1    |         |
| 30   | 1491-81160   | • SPRING               | 2    |         |
| 31   | 848C5B80X0   | • WASHER               | 2    |         |
| 32   | 848C0081Z0   | • LEVER, THROTTLE      | 1    |         |
| 33   | 579 49 28-01 | • SCREW                | 1    |         |
|      |              |                        |      |         |
|      |              |                        |      |         |
|      |              |                        |      |         |

**Fig.4 STARTER, BRAKE, CHAIN COVER**

**Fig. 4 G2200T****STARTER, BRAKE, CHAIN COVER**

| Key# | PART NUMBER  | DESCRIPTION            | Q'TY | REMARKS     |
|------|--------------|------------------------|------|-------------|
| 1    | 585 92 87-01 | STARTER ASSY           | 1    |             |
| 2    | 586 18 52-01 | • STARTER HOUSING COMP | 1    |             |
| 3    | 3330-75121   | • • GUIDE              | 1    |             |
| 4    | 848C1075C1   | • REEL                 | 1    |             |
| 5    | 2841-75300   | • SPRING               | 1    |             |
| 6    | 1850-75160   | • ROPE                 | 1    |             |
| 7    | T2041-75420  | • KNOB                 | 1    |             |
| 8    | T2041-75431  | • COLLAR               | 2    |             |
| 9    | T2041-75440  | • SPRING               | 1    |             |
| 10   | 1140-51230   | • WASHER               | 1    |             |
| 11   | T4970-51410  | • SCREW                | 1    | TP5x14L-T27 |
| 12   | 848C0074A2   | COVER                  | 1    |             |
| 13   | 8488241600   | SCREW                  | 2    | TP4x16L-T27 |
| 14   | 585 93 07-01 | BRAKE ASSY             | 1    |             |
| 15   | 848C005431   | • LEVER COMP           | 1    |             |
| 16   | 585 78 35-01 | • BRAKE BAND           | 1    |             |
| 17   | 2670-54411   | • ARM                  | 1    |             |
| 18   | 8488D86000   | • SPRING               | 1    |             |
| 19   | 586 63 25-01 | • HAND GUARD           | 1    |             |
| 20   | 8488B51700   | • PIN                  | 1    |             |
| 21   | 8488B31200   | • PIN                  | 1    |             |
| 22   | 8488Y56000   | • SPACER               | 1    |             |
| 23   | 848C0054D3   | • SPRING               | 1    |             |
| 24   | 848C0054J0   | • SPRING               | 1    |             |
| 25   | 848C0054N0   | • WASHER               | 1    |             |
| 26   | 8488152010   | • BOLT                 | 1    | M5x20L-T27  |
| 27   | T4012-82710  | • NUT                  | 1    |             |
| 28   | 8488251630   | SCREW                  | 2    | TP5x16L-T27 |
| 29   | 587 29 90-01 | CLUTCH COVER           | 1    |             |
| 30   | 586 96 90-01 | PLATE                  | 1    |             |
| 31   | 586 96 92-01 | SCREW                  | 1    | TP4x8L-+    |
| 32   | 3350-53410   | NUT, FLANGE            | 1    | M8xP1.25    |
| 33   | 848C0166M1   | GEAR                   | 1    |             |
| 34   | 2841-53240   | SCREW                  | 1    |             |
| 35   | 2810-53221   | NUT                    | 1    |             |
| 36   | 589 618 201  | DECAL, CAUTION         | 1    |             |
| 37   | 848C0090B1   | DECAL, COVER           | 1    |             |
| 38   | 585 92 92-02 | DECAL, STARTER         | 1    |             |
| 39   | 585 69 79-01 | MUFFLER COVER          | 1    |             |
| 40   | 586 96 38-01 | TAPE, CASE             | 1    |             |
| 41   | 0263-90416   | SCREW                  | 1    | M4x16L-+    |
| 42   | 582 84 32-01 | DECAL, PET NAME        | 1    |             |

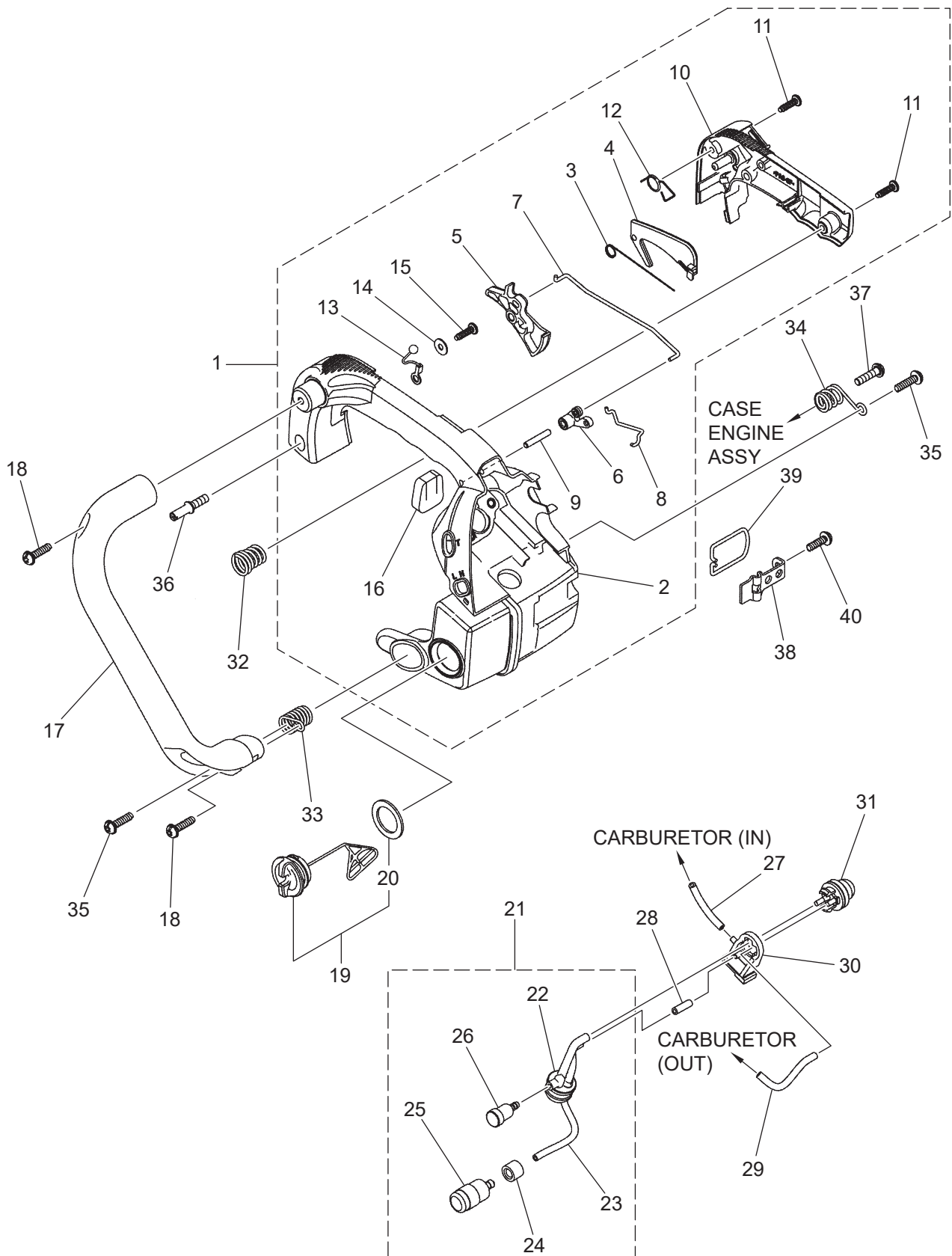
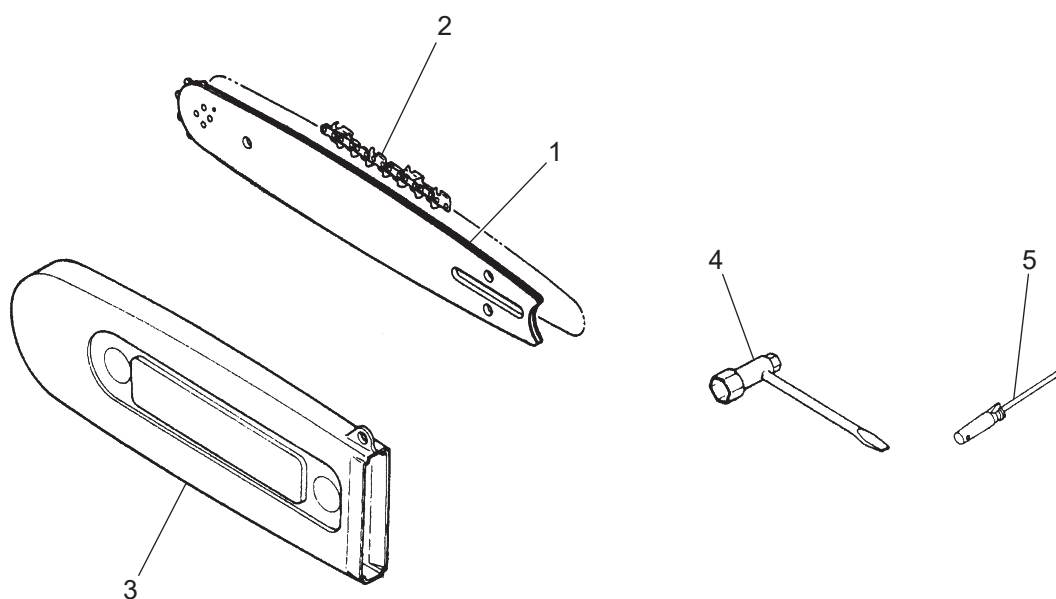
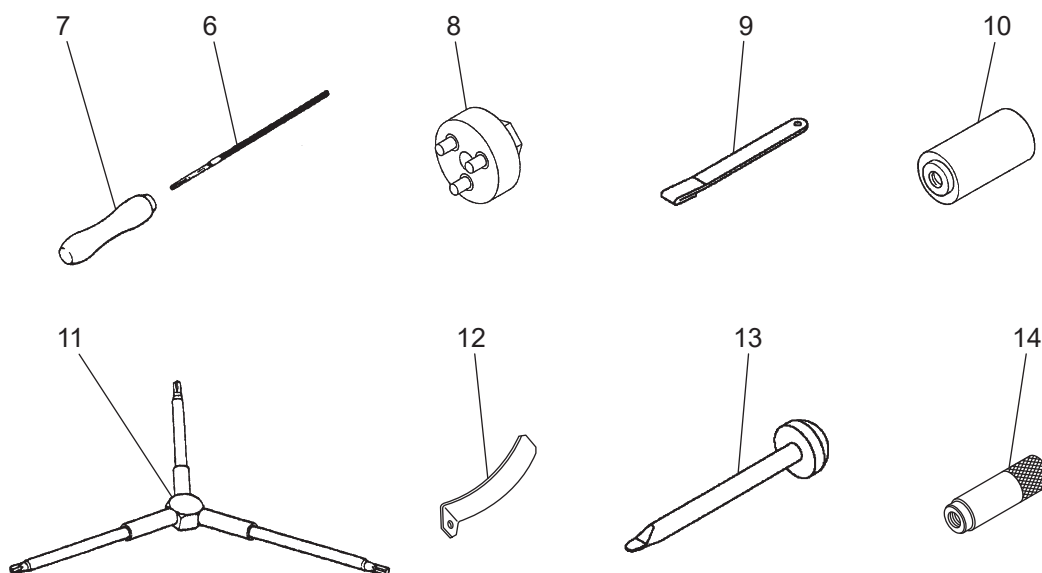
**Fig.5 HANDLE, FUEL PIPE**

Fig. 5 G2200T

## HANDLE, FUEL PIPE

| Key# | PART NUMBER  | DESCRIPTION         | Q'TY | REMARKS     |
|------|--------------|---------------------|------|-------------|
| 1    | 586 18 55-01 | REAR HANDLE ASSY    | 1    |             |
| 2    | 576 14 82-01 | • HANDLE RIGHT COMP | 1    |             |
| 3    | 848C0033F1   | • SPRING            | 1    |             |
| 4    | 848C0033E1   | • LEVER             | 1    |             |
| 5    | 848C0033C3   | • LEVER             | 1    |             |
| 6    | 848C0033N1   | • LINK              | 1    |             |
| 7    | 848C0033P0   | • ROD               | 1    |             |
| 8    | 848C0082H0   | • ROD               | 1    |             |
| 9    | 8488B42400   | • PIN               | 1    |             |
| 10   | 848C0033L2   | • COVER             | 1    |             |
| 11   | 8488241600   | • SCREW             | 2    | TP4x16L-T27 |
| 12   | 848C0033D0   | • SPRING            | 1    |             |
| 13   | 848C0037D0   | • WIRE              | 1    |             |
| 14   | 8488704000   | • WASHER            | 1    |             |
| 15   | 8488241600   | • SCREW             | 1    | TP4x16L-T27 |
| 16   | 576 14 83-01 | • SEAL              | 1    |             |
| 17   | 848C0032A0   | HANDLE              | 1    |             |
| 18   | 8488251901   | SCREW               | 2    | TP5x19L-T27 |
| 19   | 848C108512   | CAP ASSY            | 1    |             |
| 20   | 2841-31820   | • GASKET            | 1    |             |
| 21   | 848C008590   | PIPE ASSY           | 1    |             |
| 22   | 848C0085P0   | • GROMMET           | 1    |             |
| 23   | 8488G11350   | • PIPE              | 1    |             |
| 24   | 2841-31280   | • COLLAR            | 1    |             |
| 25   | 1850-85300   | • FILTER            | 1    |             |
| 26   | 2850-34501   | • BREATHER          | 1    |             |
| 27   | 8488G10450   | PIPE                | 1    |             |
| 28   | 587 22 99-01 | TUBE                | 1    |             |
| 29   | 8488G10600   | PIPE                | 1    |             |
| 30   | 586 63 43-01 | BRACKET             | 1    |             |
| 31   | 2850-81900   | PUMP                | 1    |             |
| 32   | 848C0037A1   | SPRING              | 1    |             |
| 33   | 848C0037B1   | SPRING              | 1    |             |
| 34   | 848C0037C1   | SPRING              | 1    |             |
| 35   | 8488251901   | SCREW               | 2    | TP5x19L-T27 |
| 36   | 2841-35120   | BOLT                | 1    |             |
| 37   | 8488152010   | BOLT                | 1    | M5x20L-T27  |
| 38   | 848C0033W0   | PLATE               | 1    |             |
| 39   | 848C0033U1   | HOOK                | 1    |             |
| 40   | 8488251601   | SCREW               | 1    | TP5x16L-T27 |
|      |              |                     |      |             |

**OPTIONAL PARTS**

**Fig. 6 G2200T GUIDE BAR, SAW CHAIN, ACCESSORIES, OPTIONAL PARTS**

[illegible]